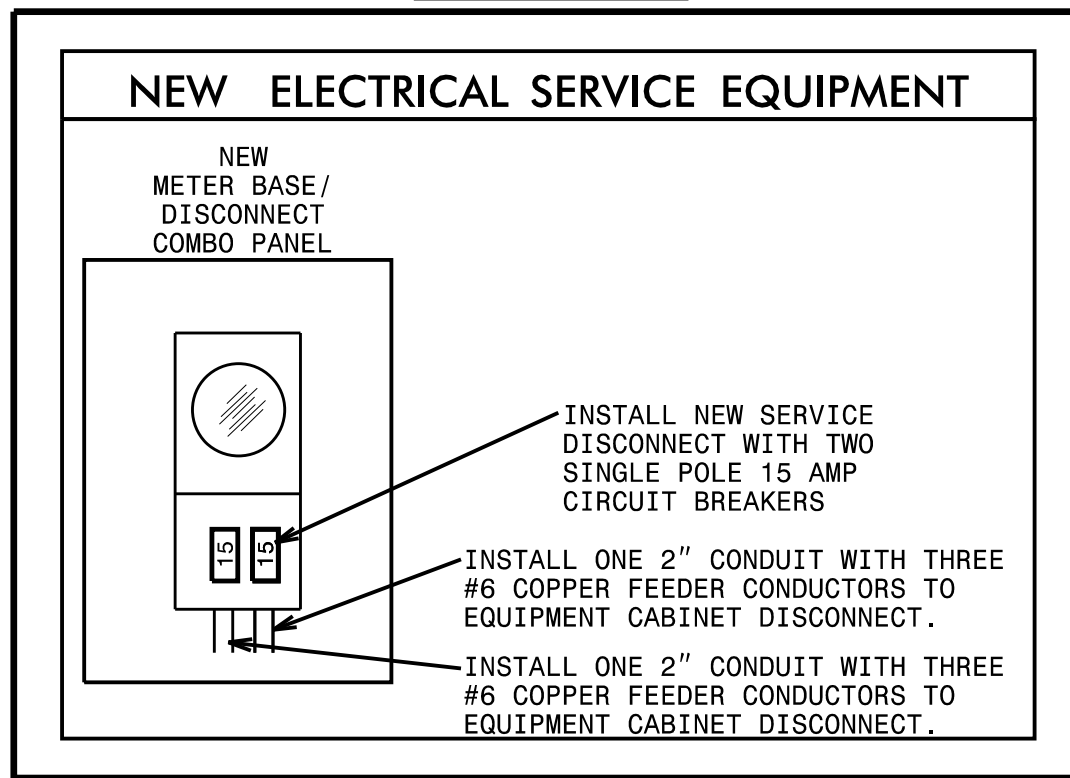
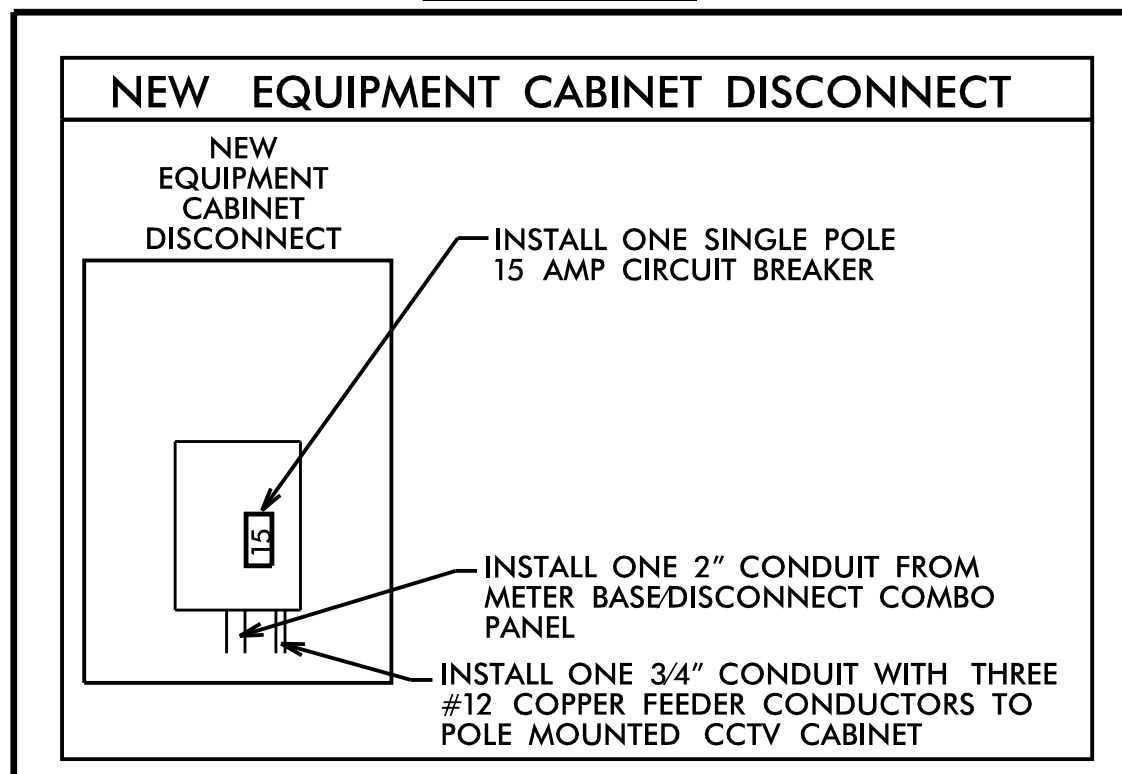


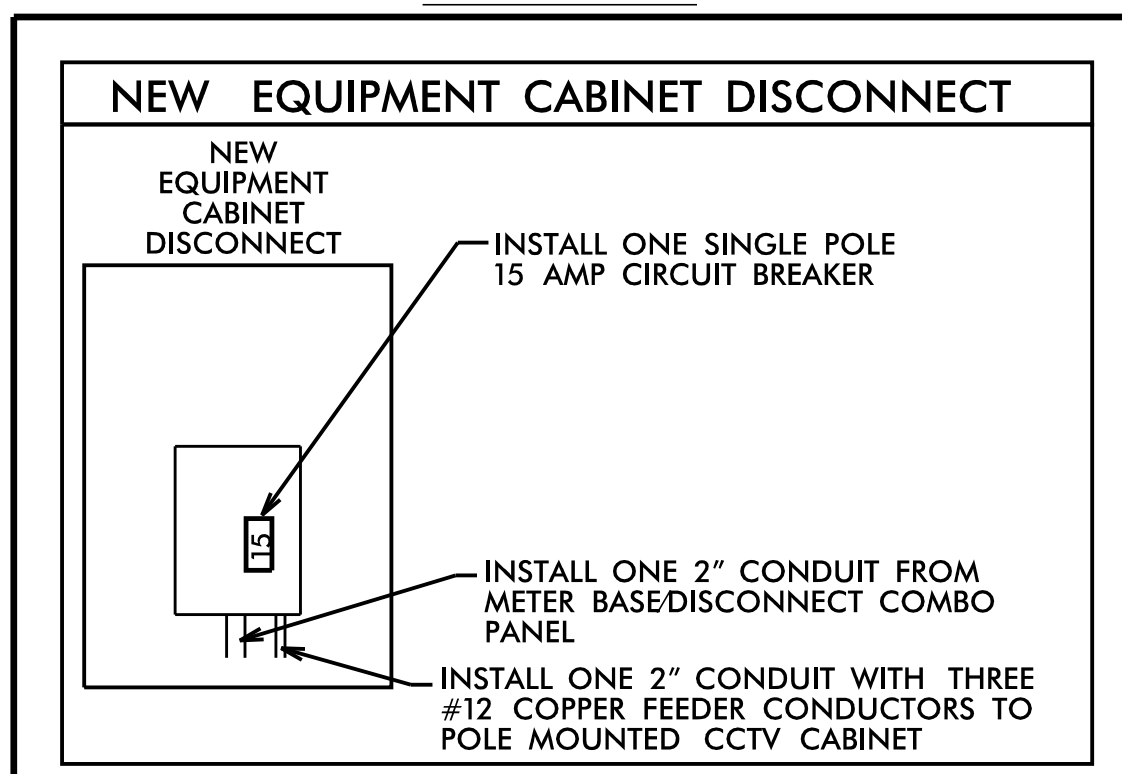
DRAWING 1



DRAWING 2

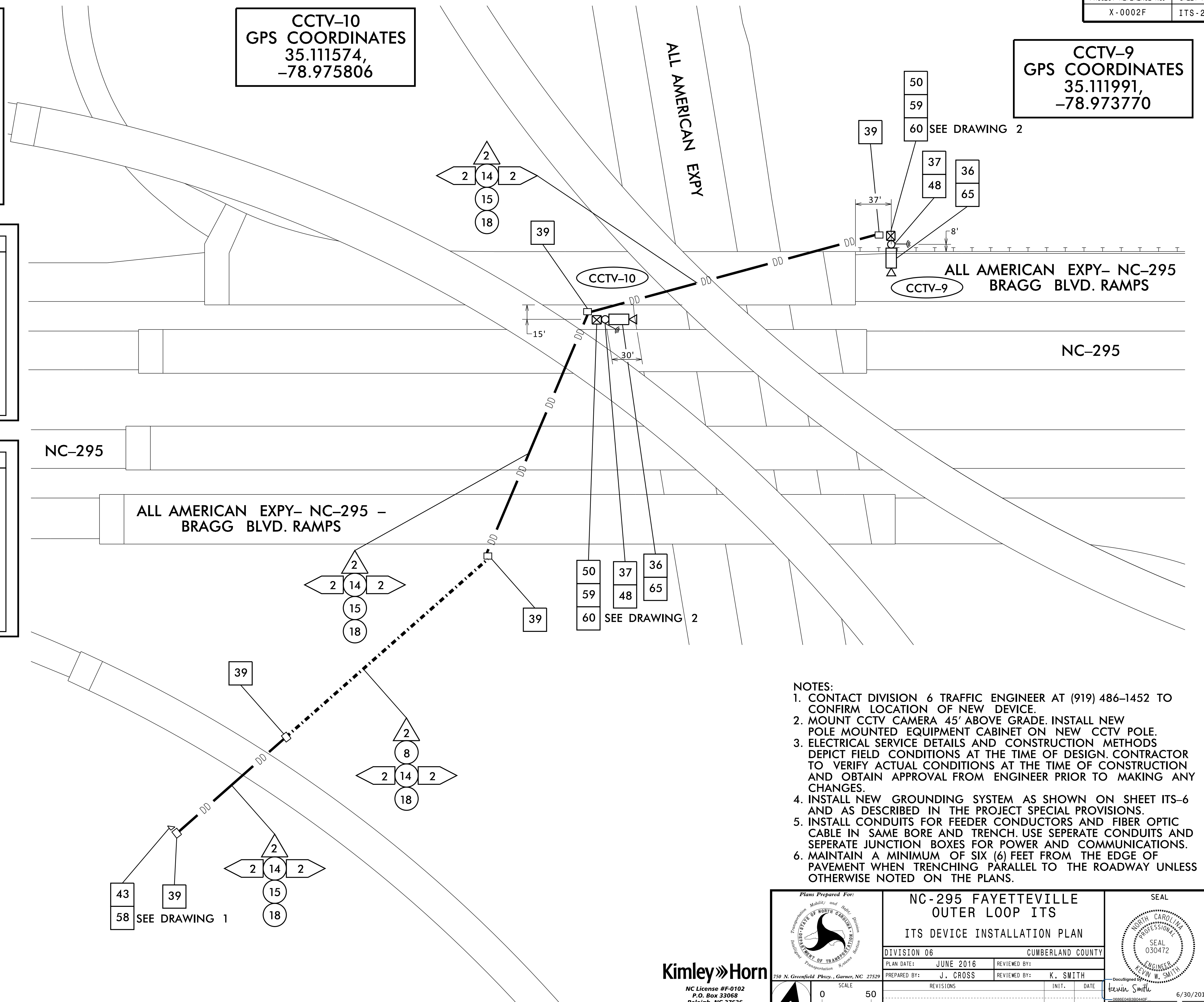


DRAWING 3



CCTV-10
GPS COORDINATES
35.111574,
-78.975806

CCTV-9
GPS COORDINATES
35.111991,
-78.973770



- NOTES:**
1. CONTACT DIVISION 6 TRAFFIC ENGINEER AT (919) 486-1452 TO CONFIRM LOCATION OF NEW DEVICE.
 2. MOUNT CCTV CAMERA 45' ABOVE GRADE. INSTALL NEW POLE MOUNTED EQUIPMENT CABINET ON NEW CCTV POLE.
 3. ELECTRICAL SERVICE DETAILS AND CONSTRUCTION METHODS DEPICT FIELD CONDITIONS AT THE TIME OF DESIGN. CONTRACTOR TO VERIFY ACTUAL CONDITIONS AT THE TIME OF CONSTRUCTION AND OBTAIN APPROVAL FROM ENGINEER PRIOR TO MAKING ANY CHANGES.
 4. INSTALL NEW GROUNDING SYSTEM AS SHOWN ON SHEET ITS-6 AND AS DESCRIBED IN THE PROJECT SPECIAL PROVISIONS.
 5. INSTALL CONDUITS FOR FEEDER CONDUCTORS AND FIBER OPTIC CABLE IN SAME BORE AND TRENCH. USE SEPERATE CONDUITS AND SEPERATE JUNCTION BOXES FOR POWER AND COMMUNICATIONS.
 6. MAINTAIN A MINIMUM OF SIX (6) FEET FROM THE EDGE OF PAVEMENT WHEN TRENCHING PARALLEL TO THE ROADWAY UNLESS OTHERWISE NOTED ON THE PLANS.

	NC-295 FAYETTEVILLE OUTER LOOP ITS		
	ITS DEVICE INSTALLATION PLAN		
DIVISION 06 CUMBERLAND COUNTY PLAN DATE: JUNE 2016 REVIEWED BY: PREPARED BY: J. CROSS REVIEWED BY: K. SMITH		SCALE: 0 50 DATE: 6/30/2016	

Kimley»Horn
NC License #F-0102
P.O. Box 33068
Raleigh, NC 27636
Tel: (919) 677-2000
Fax: (919) 677-2050

6/30/2016 12:38:09 PM jerry.gross KARAL_TPTD_ITS_01036317 - NCDOT I-295 ITS\Plans\X-0002F_ITS_psh_28.dgn