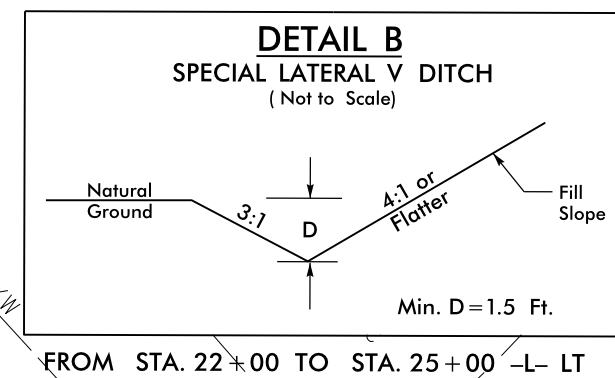


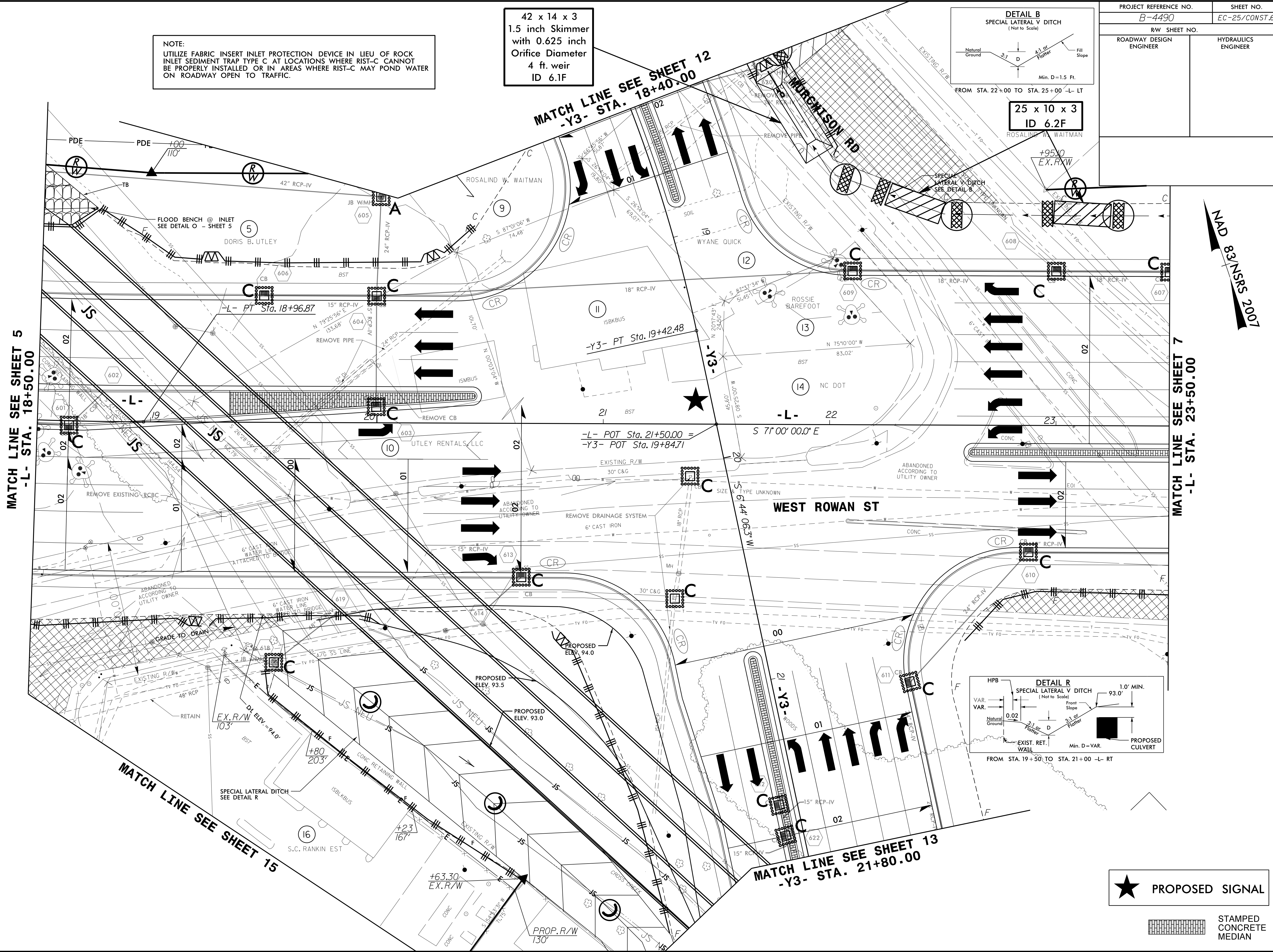
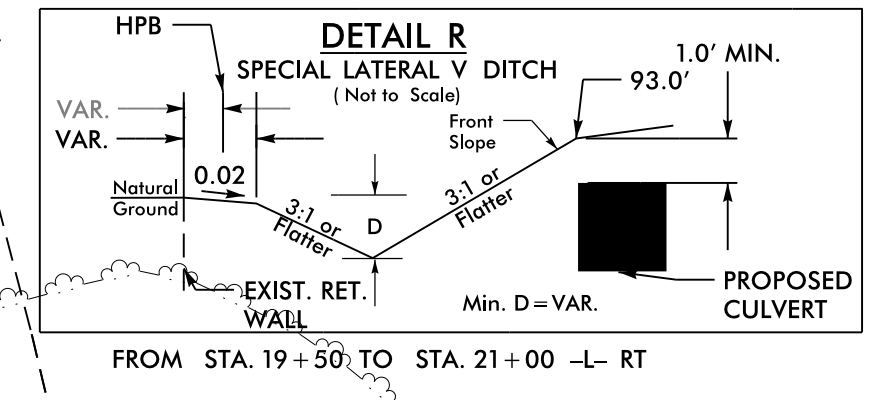
PROJECT REFERENCE NO. B-4490	SHEET NO. EC-25/CONST.6
RW SHEET NO.	HYDRAULICS ENGINEER
ROADWAY DESIGN ENGINEER	

NOTE:
UTILIZE FABRIC INSERT INLET PROTECTION DEVICE IN LIEU OF ROCK INLET SEDIMENT TRAP TYPE C AT LOCATIONS WHERE RIST-C CANNOT BE PROPERLY INSTALLED OR IN AREAS WHERE RIST-C MAY POND WATER ON ROADWAY OPEN TO TRAFFIC.

42 x 14 x 3
1.5 inch Skimmer
with 0.625 inch
Orifice Diameter
4 ft. weir
ID 6.1F



25 x 10 x 3
ID 6.2F
ROSA LINDA WAITMAN
+95.0
EX. R/W



★ PROPOSED SIGNAL

STAMPED CONCRETE MEDIAN

8/17/99
21-AUG-2015 15:38
R:\Projects\B4490\EC-25\CONST.6.dgn
R:\Projects\B4490\EC-25\CONST.6.dgn
R:\Projects\B4490\EC-25\CONST.6.dgn