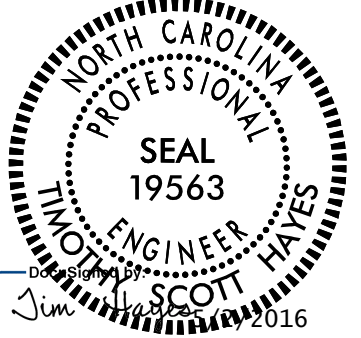

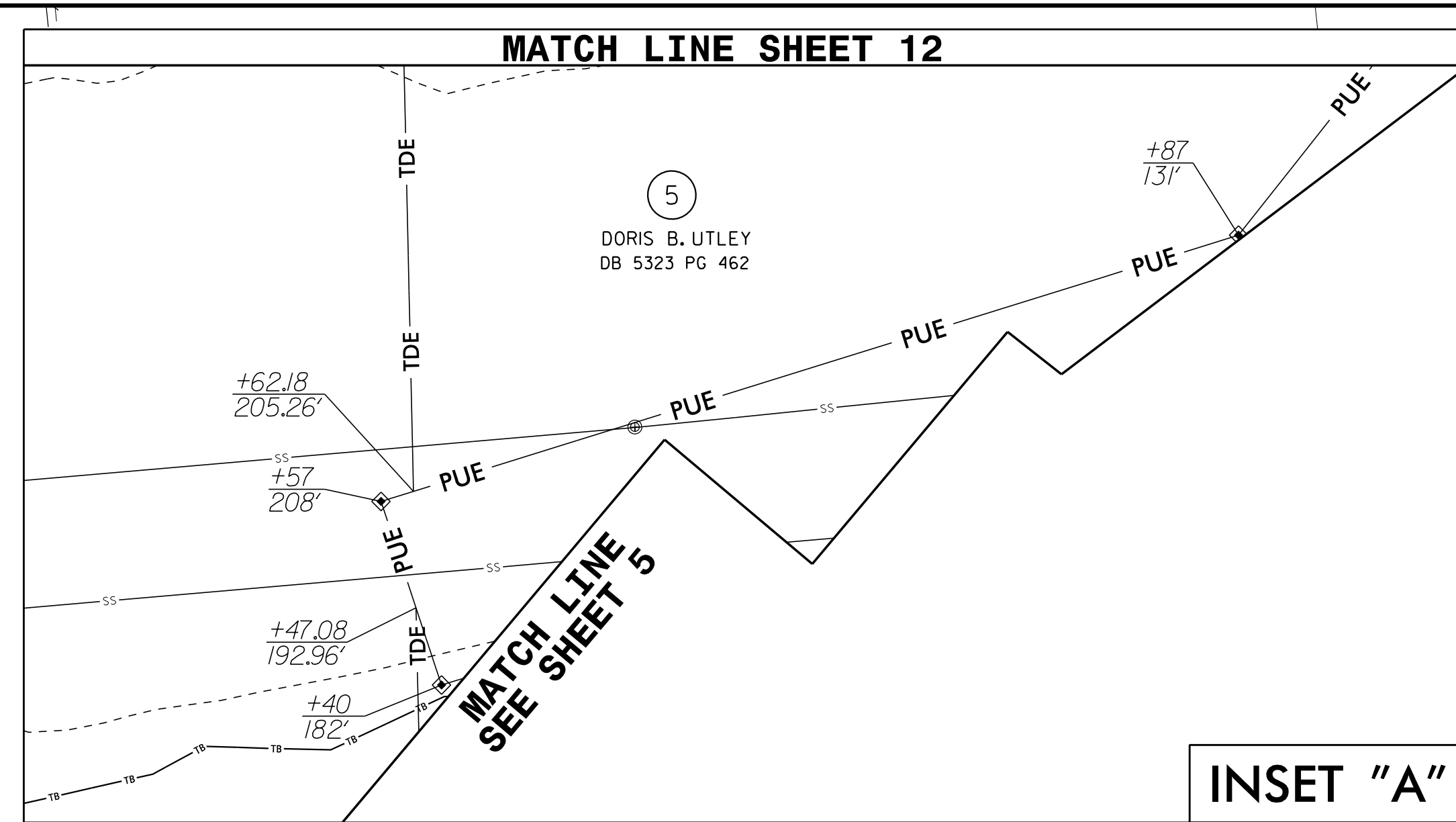


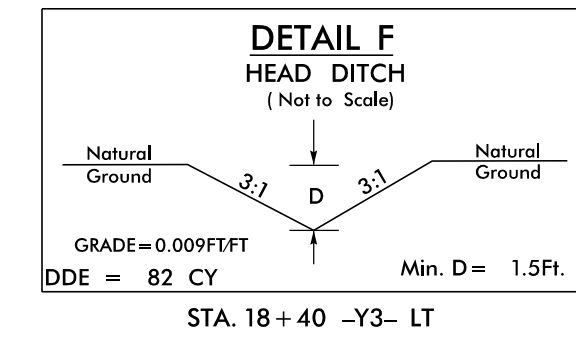
PROJECT REFERENCE NO. B-4490		SHEET NO. 12	
RW SHEET NO.			
ROADWAY DESIGN ENGINEER		HYDRAULICS ENGINEER	
			
<p>DOCUMENT NOT CONSIDERED FINAL UNLESS ALL SIGNATURES COMPLETED</p> <p>PLANS PREPARED BY: PARSONS BRINCKERHOFF 434 FAYETTEVILLE STREET SUITE 1500 RALEIGH, NC 27601 LICENSE NO. F-0165</p>			



-Y3-

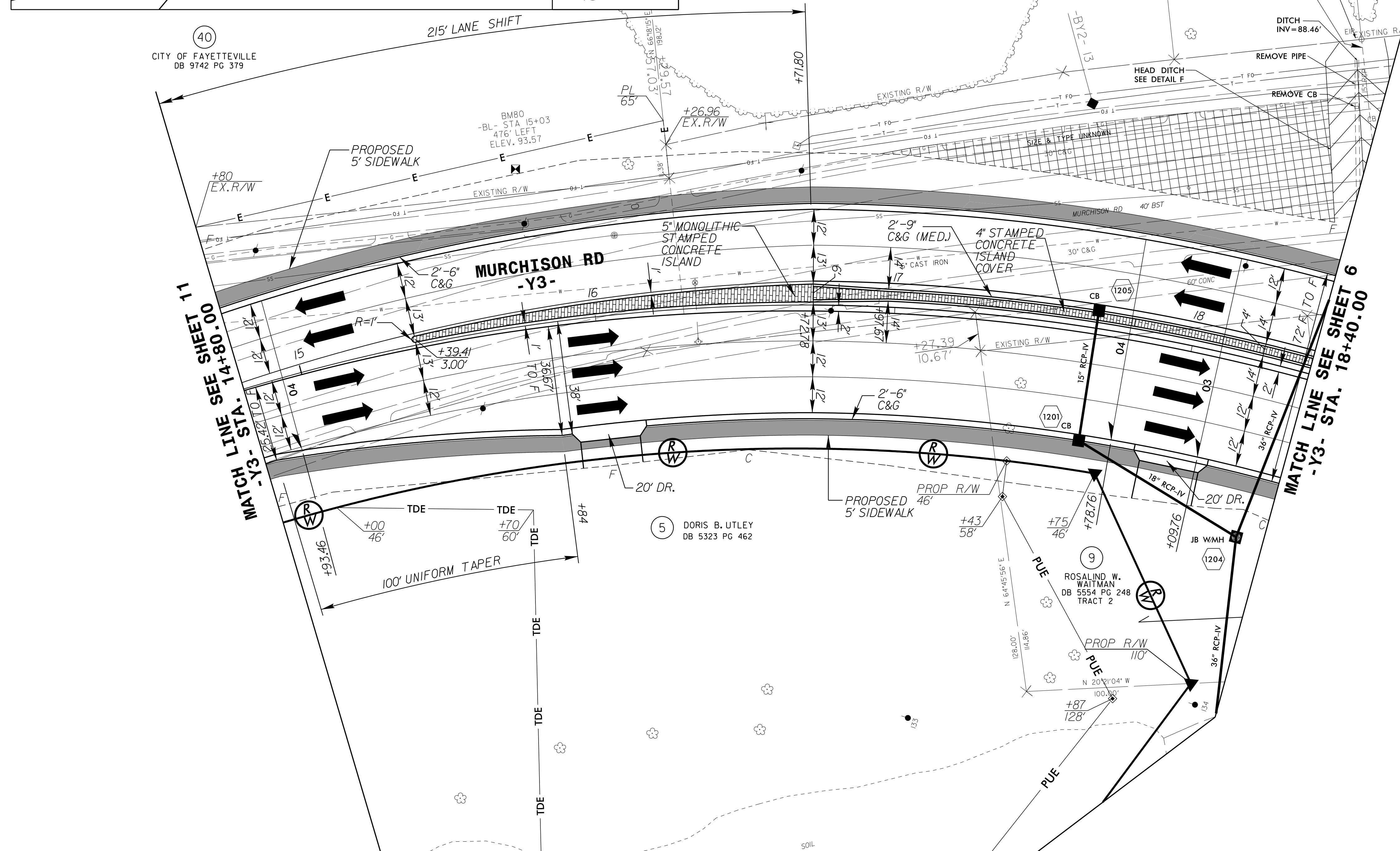
PI Sta 17+09.63
 $\Delta = 43^\circ 13' 24.1''$ (RT)
 $D = 8' 48" 53.0''$
 $L = 490.35'$
 $T = 257.51'$
 $R = 650.00'$
 $DS = 40$ MPH
 $SE = 4.0\%$
 $RO = 12.4'$

SIU-HUA CHEN
DB 5238 PG 168



NAD 83/NSRS 2007

CITY OF FAYETTEVILLE
DB 9742 PG 379



SEE SHEET No. 2B-3 FOR PAVEMENT REMOVAL DETAIL
SEE SHEET No. 23 FOR -Y3- PROFILE

REVISIONS

10.09.56 AM
pash_12.dgn
5/22/2016