

**This electronic collection of documents is provided  
for the convenience of the user  
and is Not a Certified Document –**

**The documents contained herein were originally issued  
and sealed by the individuals whose names and license  
numbers appear on each page, on the dates appearing  
with their signature on that page.**

**This file or an individual page  
shall not be considered a certified document.**

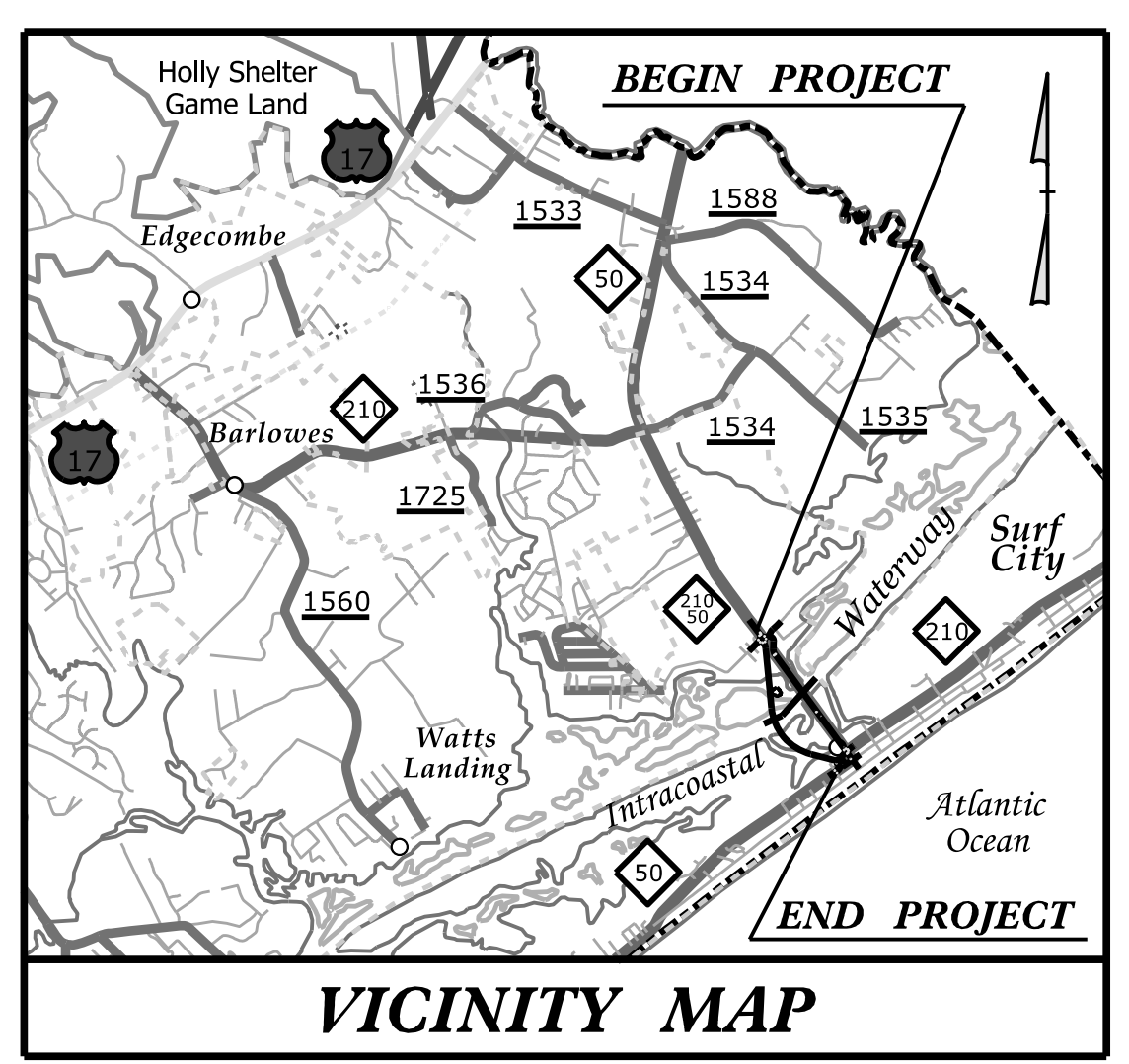
**TIP PROJECT: B-4929**

See Sheet I-A For Index of Sheets  
See Sheet I-B For Conventional Symbols

# STATE OF NORTH CAROLINA DIVISION OF HIGHWAYS

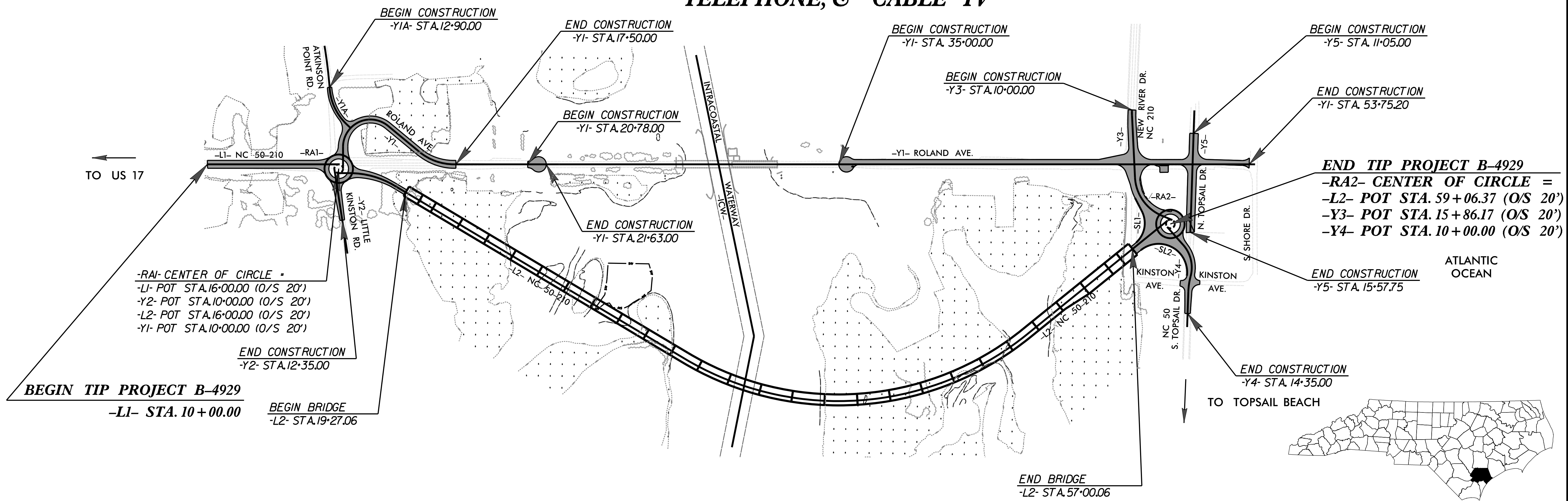
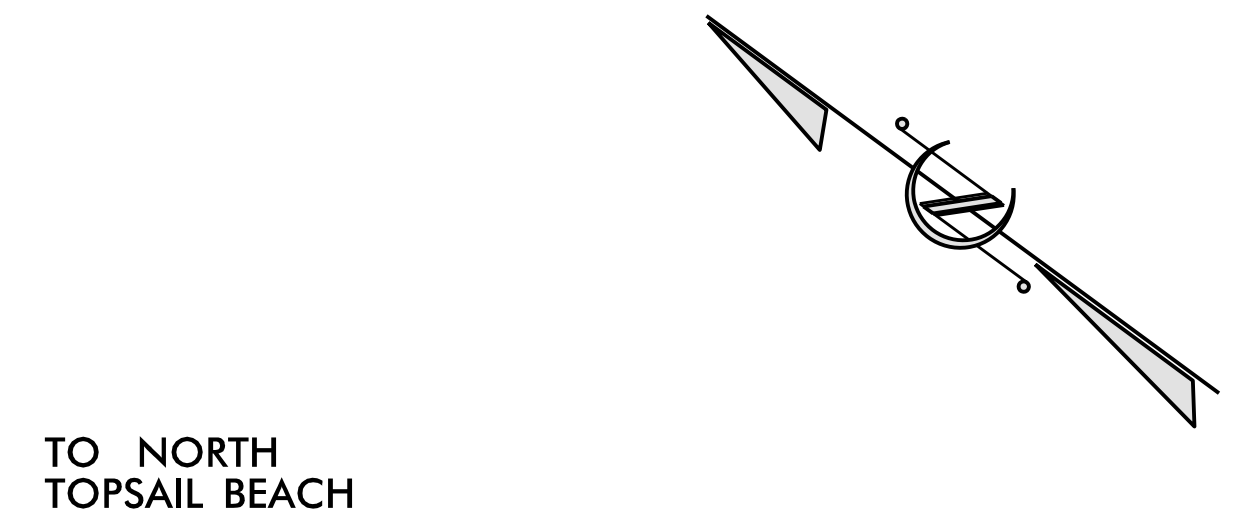
## UTILITIES BY OTHERS PLANS PENDER COUNTY

T.I.P. NO.	SHEET NO.
B-4929	UO-1

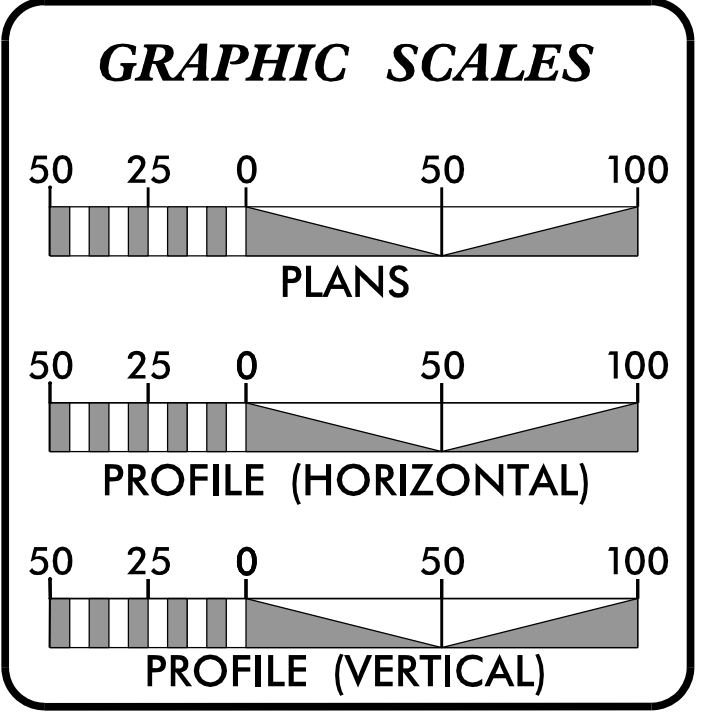


**LOCATION: BRIDGE NO. 16 OVER THE INTRACOASTAL  
WAERWAY ON NC 50-210**

**TYPE OF WORK: RELOCATION OF OVERHEAD POWER,  
TELEPHONE, & CABLE TV**



THERE IS NO CONTROL OF ACCESS ON THIS PROJECT.  
THIS PROJECT IS WITHIN THE MUNICIPAL ETJ BOUNDARIES OF SURF CITY.



SHEET NO.	DESCRIPTION
UO-1	TITLE SHEET
UO-2	UTILITIES BY OTHERS PLAN SHEET
UO-3	UTILITIES BY OTHERS PLAN SHEET
UO-4	UTILITIES BY OTHERS PLAN SHEET

- UTILITY OWNERS ON PROJECT**
- (1) JONES ONSLOW EMC (POWER DISTRIBUTION)
  - (2) CENTURYLINK (COMMUNICATIONS)
  - (3) CHARTER COMMUNICATIONS (COMMUNICATIONS)

**Cardno**

CARDNO (NC), INC.  
7606 WHITEHALL EXECUTIVE CENTER DR  
SUITE 800  
CHARLOTTE NC 28273  
PHONE (704) 927-9700  
FAX (704) 529-3272

Michael Moore, P.L.S.      BRANCH MANAGER

PREPARED IN THE OFFICE OF:  
DIVISION OF HIGHWAYS  
UTILITIES UNIT  
UTILITIES ENGINEERING

1555 MAIL SERVICES CENTER  
RALEIGH NC 27699-1555  
PHONE (919) 707-6690  
FAX (919) 250-4151

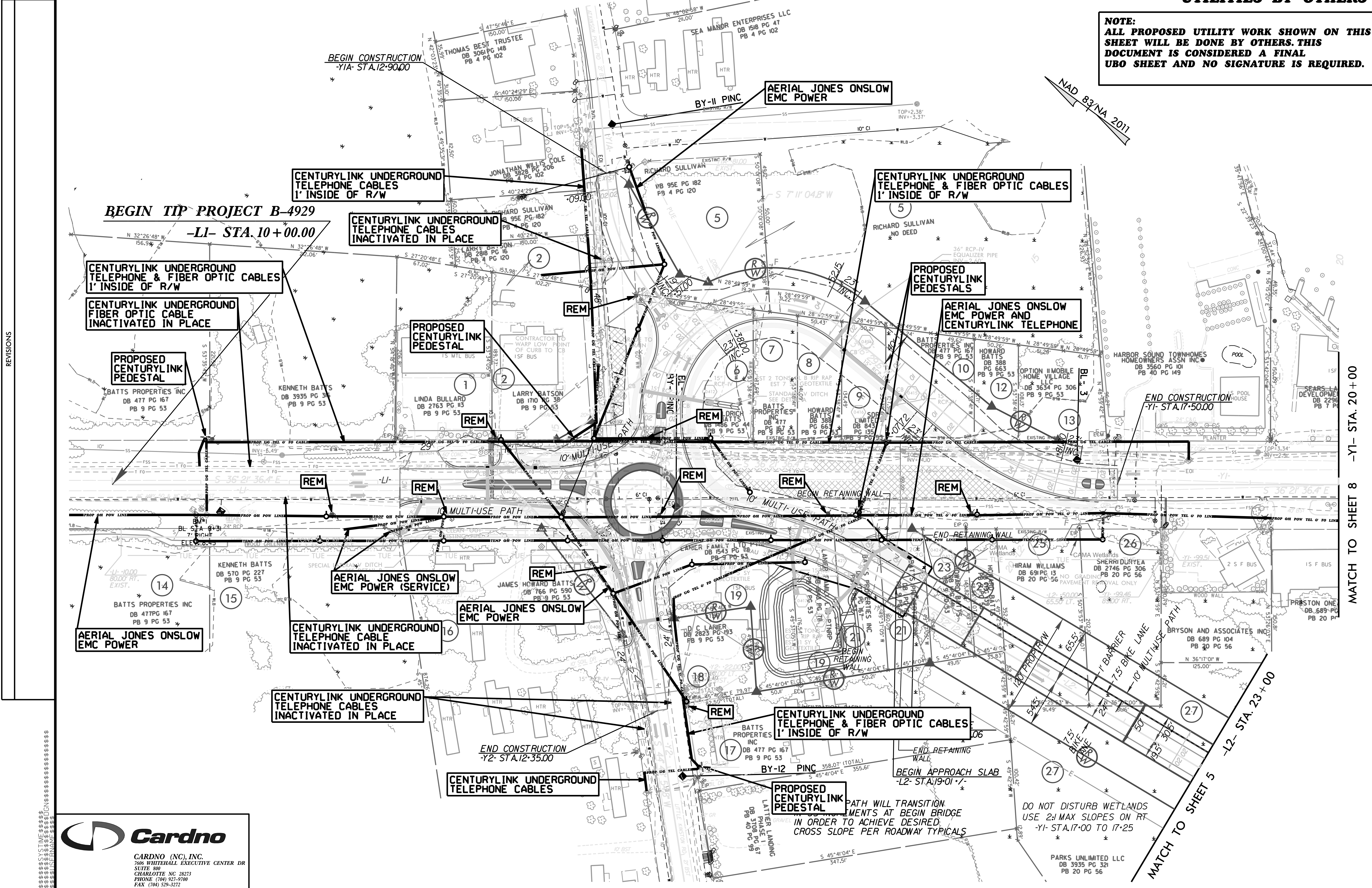
Roger Worthington, P.E.      UTILITIES SECTION ENGINEER  
Bo Hemphill, P.E.              UTILITIES SQUAD LEADER PROJECT ENGINEER  
Kelvin Martin E.I.              UTILITIES PROJECT DESIGNER

\$\$\$\$\$ SYSTEM \$\$\$\$\$\$ DON \$\$\$\$\$\$ USERNAME \$\$\$\$\$\$



**UTILITIES BY OTHERS**

**NOTE:**  
**ALL PROPOSED UTILITY WORK SHOWN ON THIS SHEET WILL BE DONE BY OTHERS. THIS DOCUMENT IS CONSIDERED A FINAL UBO SHEET AND NO SIGNATURE IS REQUIRED.**



REVISIONS

**Cardno**  
 CARDNO (NC), INC.  
 7606 WHITEHALL EXECUTIVE CENTER DR  
 SUITE 800  
 CHARLOTTE NC 28273  
 PHONE (704) 927-9700  
 FAX (704) 529-3272

DO NOT DISTURB WETLANDS  
 USE 2:1 MAX SLOPES ON RT  
 -Y1- STA. 17+00 TO 17+25

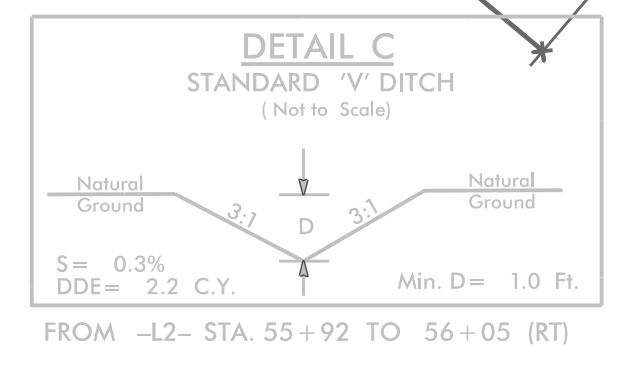
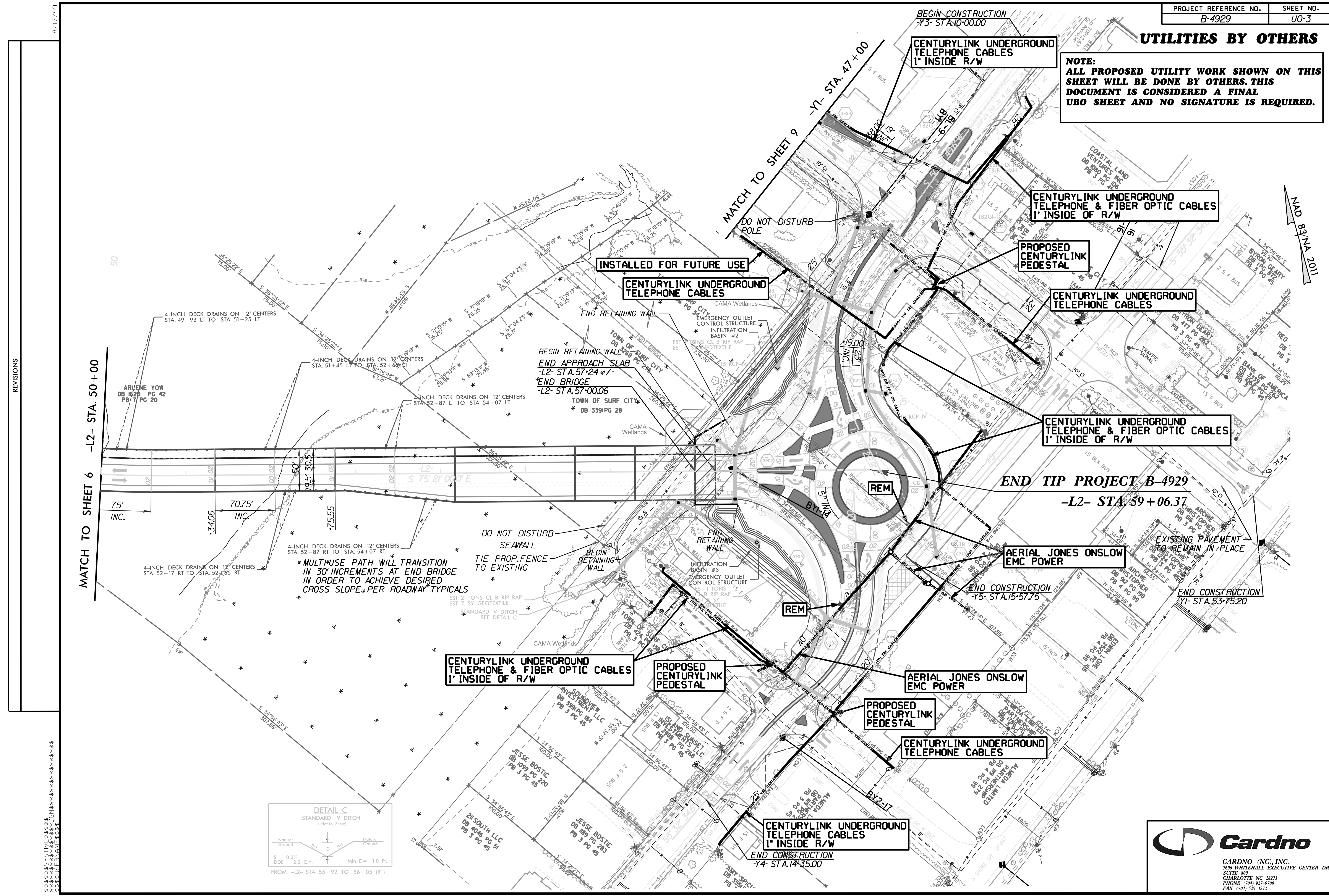
MATCH TO SHEET 5  
 -L2- STA. 23+00

MATCH TO SHEET 8 -Y1- STA. 20+00



**UTILITIES BY OTHERS**

**NOTE:**  
**ALL PROPOSED UTILITY WORK SHOWN ON THIS SHEET WILL BE DONE BY OTHERS. THIS DOCUMENT IS CONSIDERED A FINAL UBO SHEET AND NO SIGNATURE IS REQUIRED.**



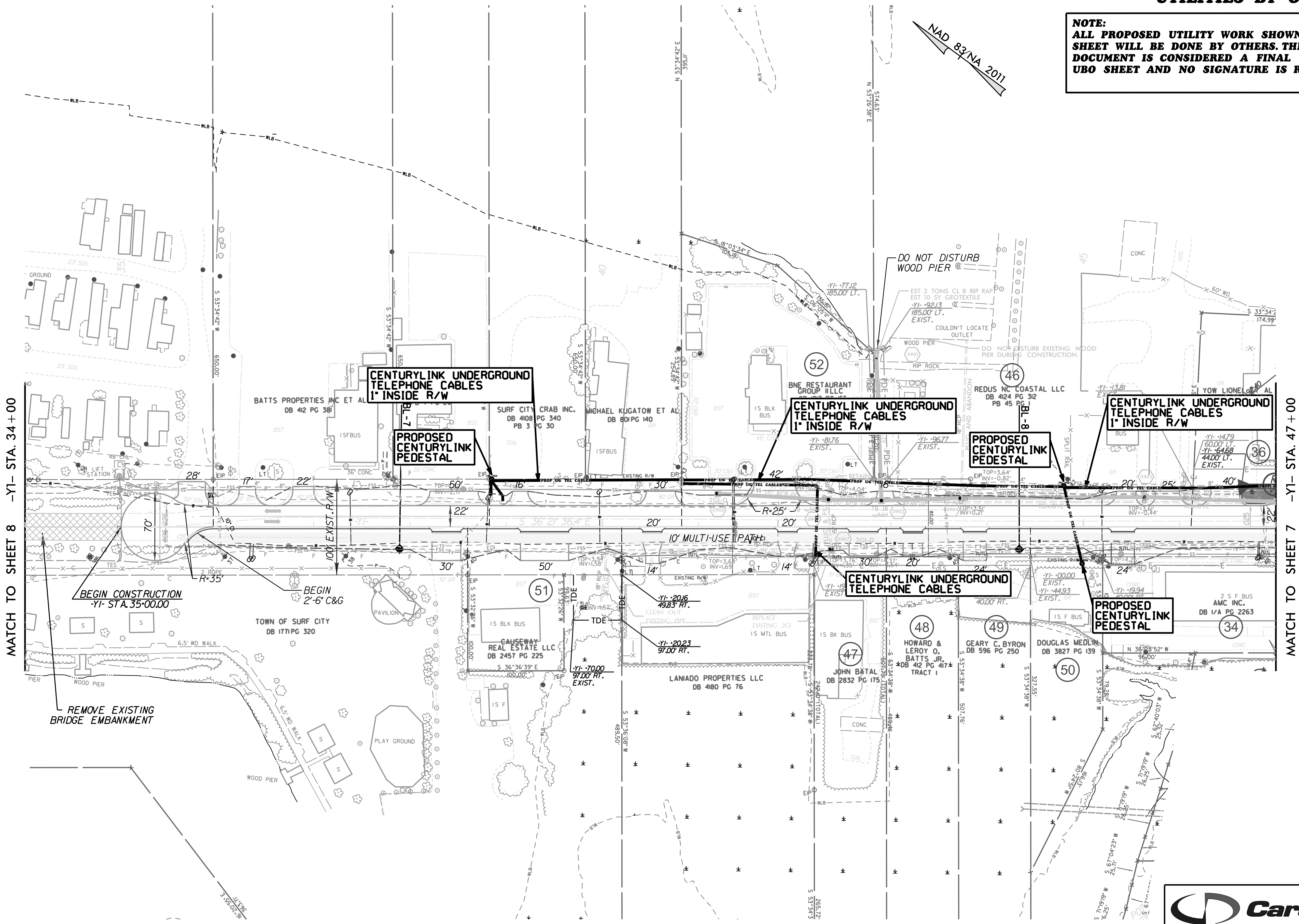
REVISIONS



**UTILITIES BY OTHERS**

**NOTE:**  
**ALL PROPOSED UTILITY WORK SHOWN ON THIS SHEET WILL BE DONE BY OTHERS. THIS DOCUMENT IS CONSIDERED A FINAL UBO SHEET AND NO SIGNATURE IS REQUIRED.**

NAD 83/NA 2011



MATCH TO SHEET 8 -Y1- STA. 34+00

MATCH TO SHEET 7 -Y1- STA. 47+00

BEGIN CONSTRUCTION  
 -Y1- STA. 35+00.00

BEGIN 2'-6" C&G

REMOVE EXISTING  
 BRIDGE EMBANKMENT

REVISIONS

8/17/99

SYSTEM: \$\$\$\$\$\$  
 DESIGN: \$\$\$\$\$\$  
 CHECK: \$\$\$\$\$\$  
 DATE: \$\$\$\$\$\$



**Cardno**  
 CARDNO (NC), INC.  
 7606 WHITEHALL EXECUTIVE CENTER DR  
 SUITE 800  
 CHARLOTTE, NC 28273  
 PHONE (704) 923-9700  
 FAX (704) 529-3272