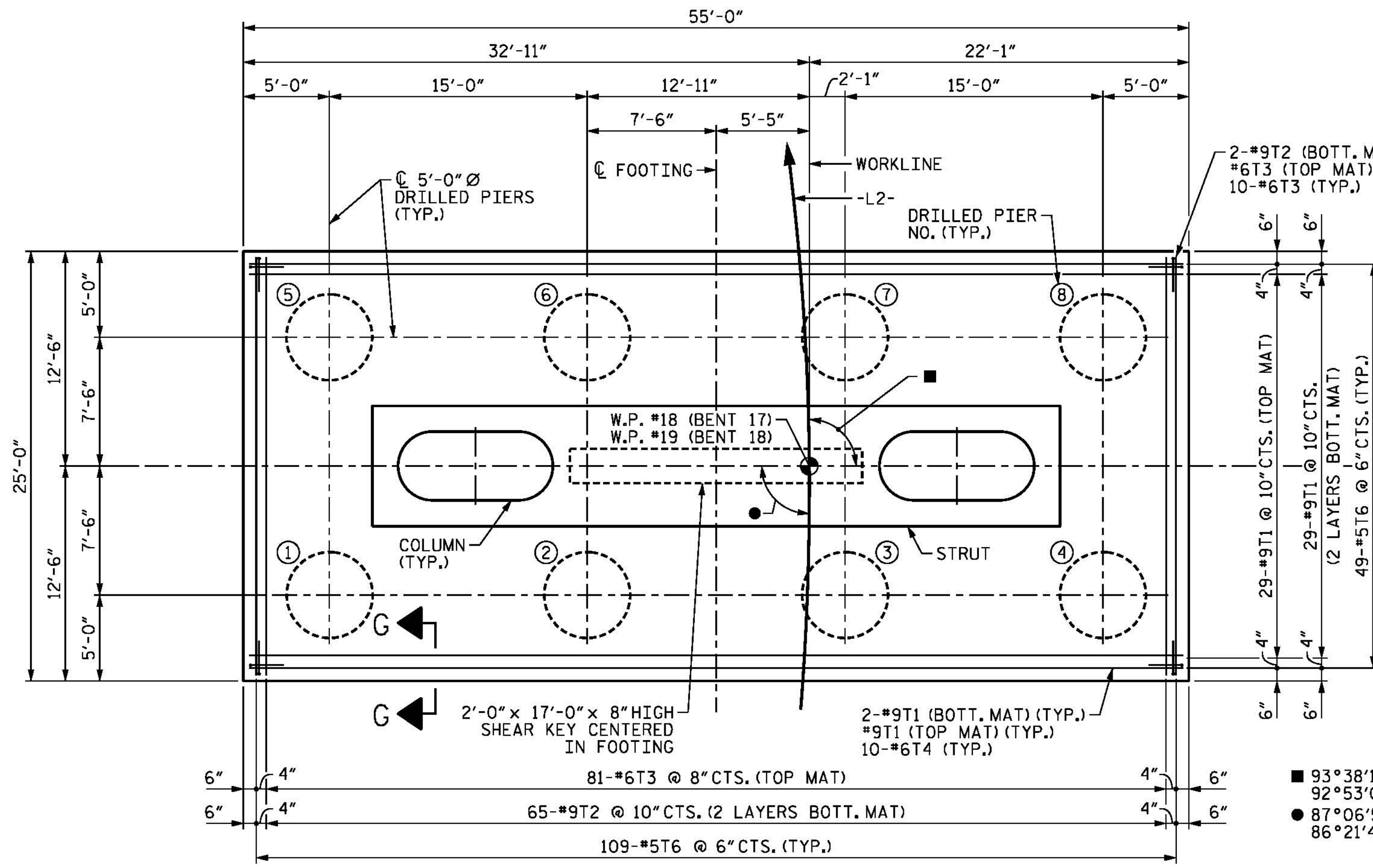


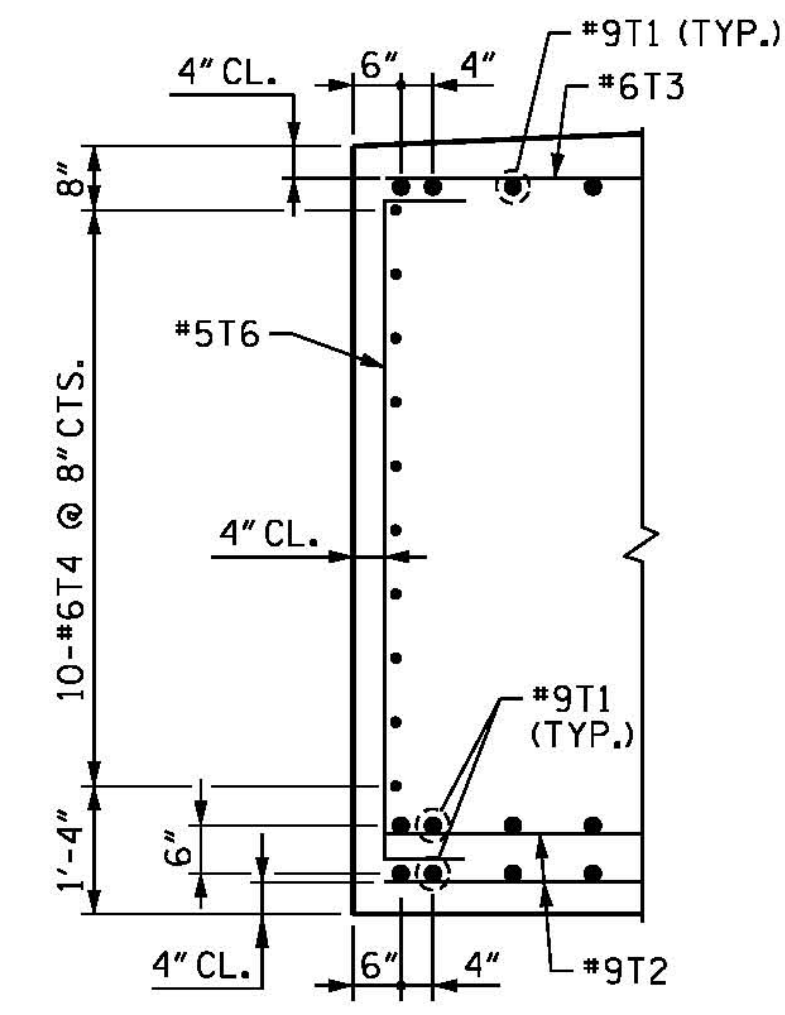
**NOTES**

FOR NOTES, SEE SHEET 1 OF 5.

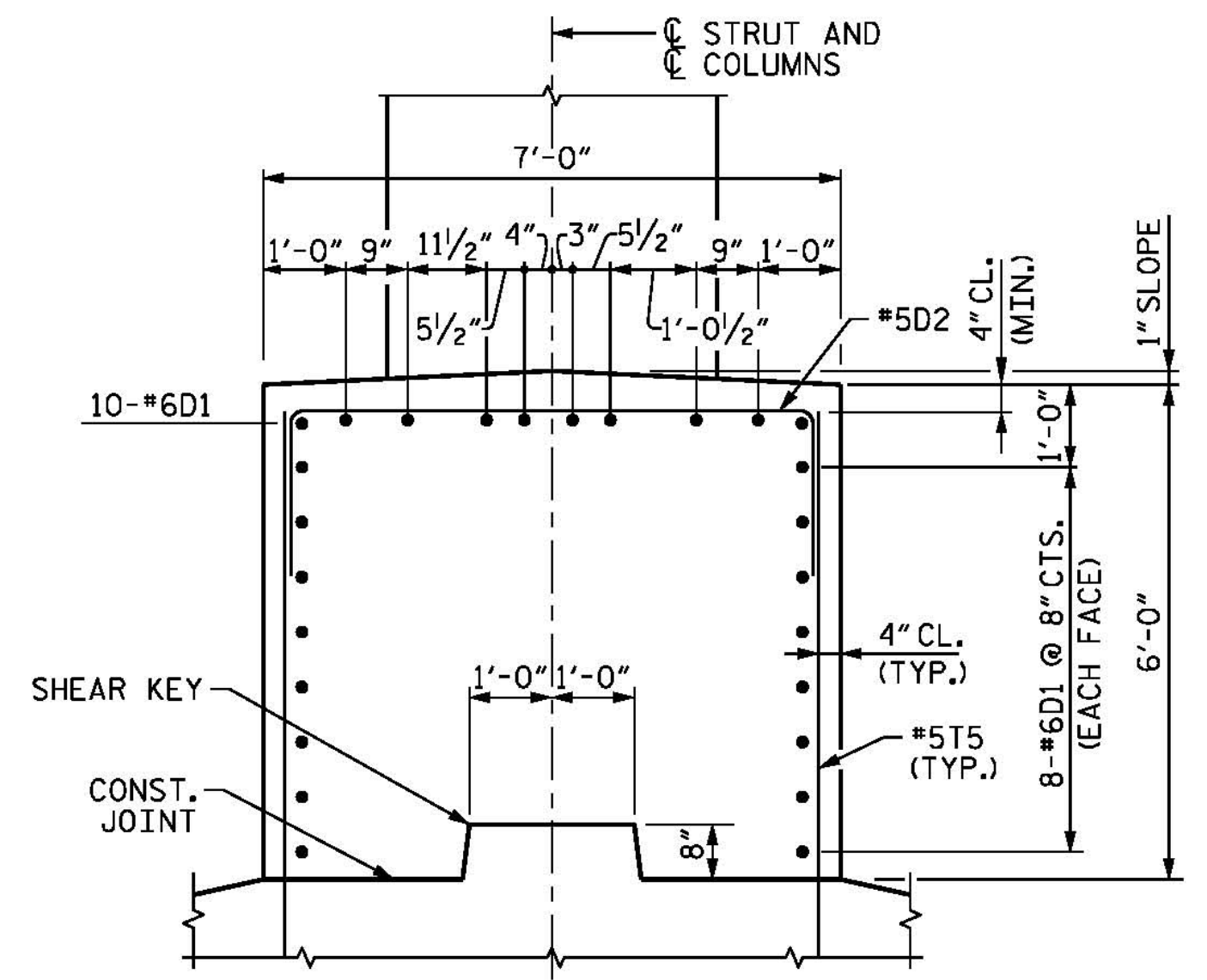


**FOOTING PLAN**

- 93°38'19" TO SHORT CHORD (BENT 17 AHEAD)
- 92°53'09" TO SHORT CHORD (BENT 18 AHEAD)
- 87°06'52" TO SHORT CHORD (BENT 17 BACK)
- 86°21'42" TO SHORT CHORD (BENT 18 BACK)

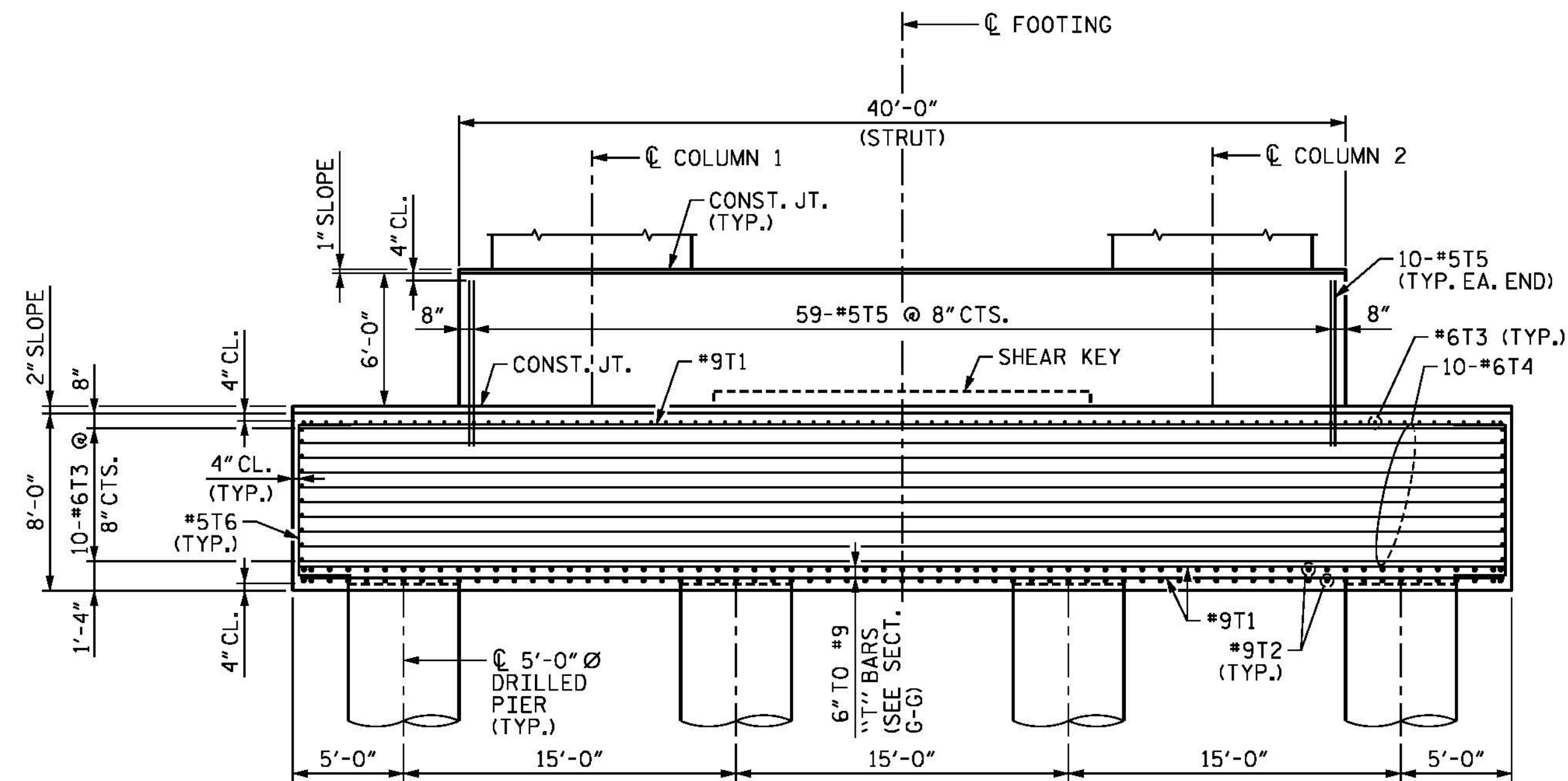


**SECTION G-G**



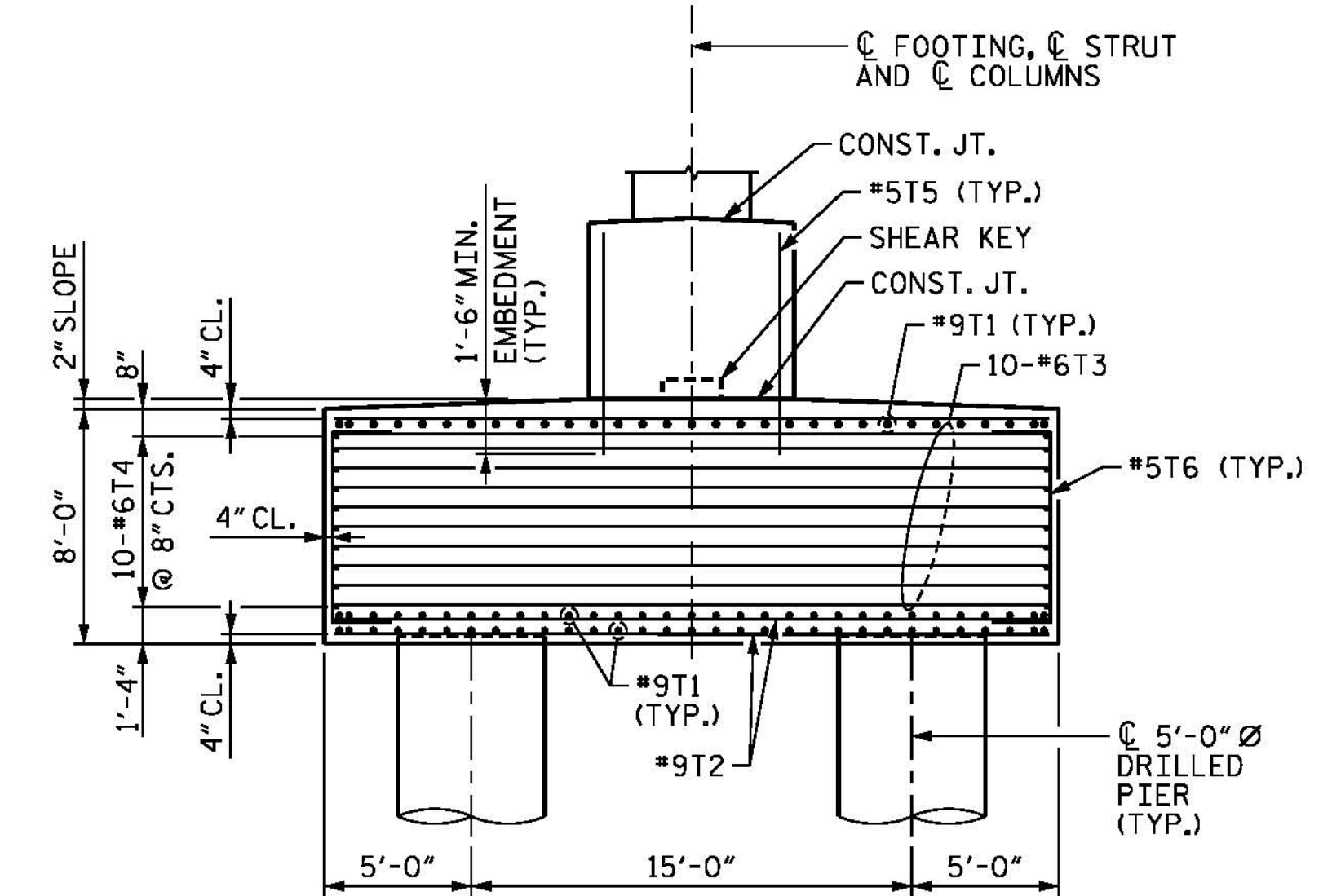
**SECTION E-E**

BARs MAY BE SHIFTED SLIGHTLY, AS NECESSARY, TO CLEAR COLUMN REINFORCING.



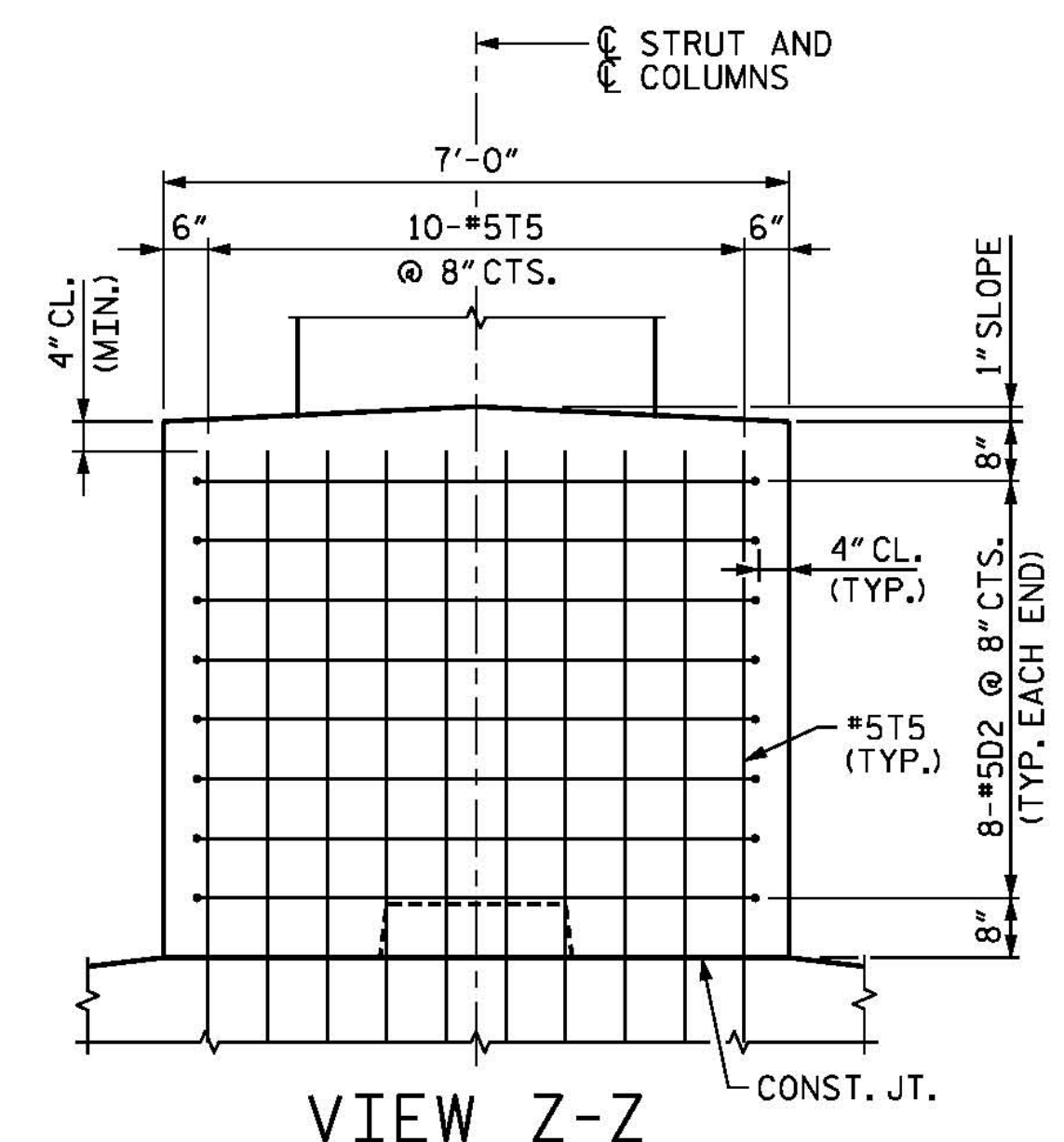
**FOOTING AND STRUT ELEVATION**

COLUMN AND STRUT REINFORCEMENT NOT SHOWN FOR CLARITY, SEE SHEETS 1 OF 5 AND 2 OF 5.



**SIDE ELEVATION**

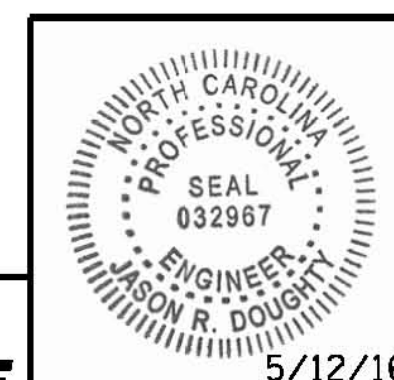
COLUMN AND STRUT REINFORCEMENT NOT SHOWN FOR CLARITY, SEE SHEETS 1 OF 5 AND 2 OF 5.



**VIEW Z-Z**

PROJECT NO. B-4929  
PENDER COUNTY  
 STATION: 38+13.81 -L2-  
 SHEET 3 OF 5 STEEL ALTERNATE

STATE OF NORTH CAROLINA  
 DEPARTMENT OF TRANSPORTATION  
 RALEIGH  
 SUBSTRUCTURE  
**BENTS 17 AND 18**  
**SECTIONS AND DETAILS**



**PARSONS BRINCKERHOFF**  
 434 FAYETTEVILLE STREET  
 SUITE 1500  
 RALEIGH, NC 27601  
 LICENSE NO. F-0165

DocuSigned by:  
*Jason R Doughty*  
 00F1C96448274F7...

REVISIONS						SHEET NO.
NO.	BY:	DATE:	NO.	BY:	DATE:	S-271
1			3			TOTAL SHEETS
2			4			278

**DOCUMENT NOT CONSIDERED FINAL UNLESS ALL SIGNATURES COMPLETED**

5/12/2016 401.119\_B4929\_SMU\_IB17\_3s.dgn

DESIGNED BY: E. ULLMER DATE: FEB 2016  
 DRAWN BY: M. HOBBS DATE: MAR 2016  
 CHECKED BY: B. LOFLIN DATE: APR 2016  
 DESIGN ENGINEER OF RECORD: J. DOUGHTY DATE: MAY 2016