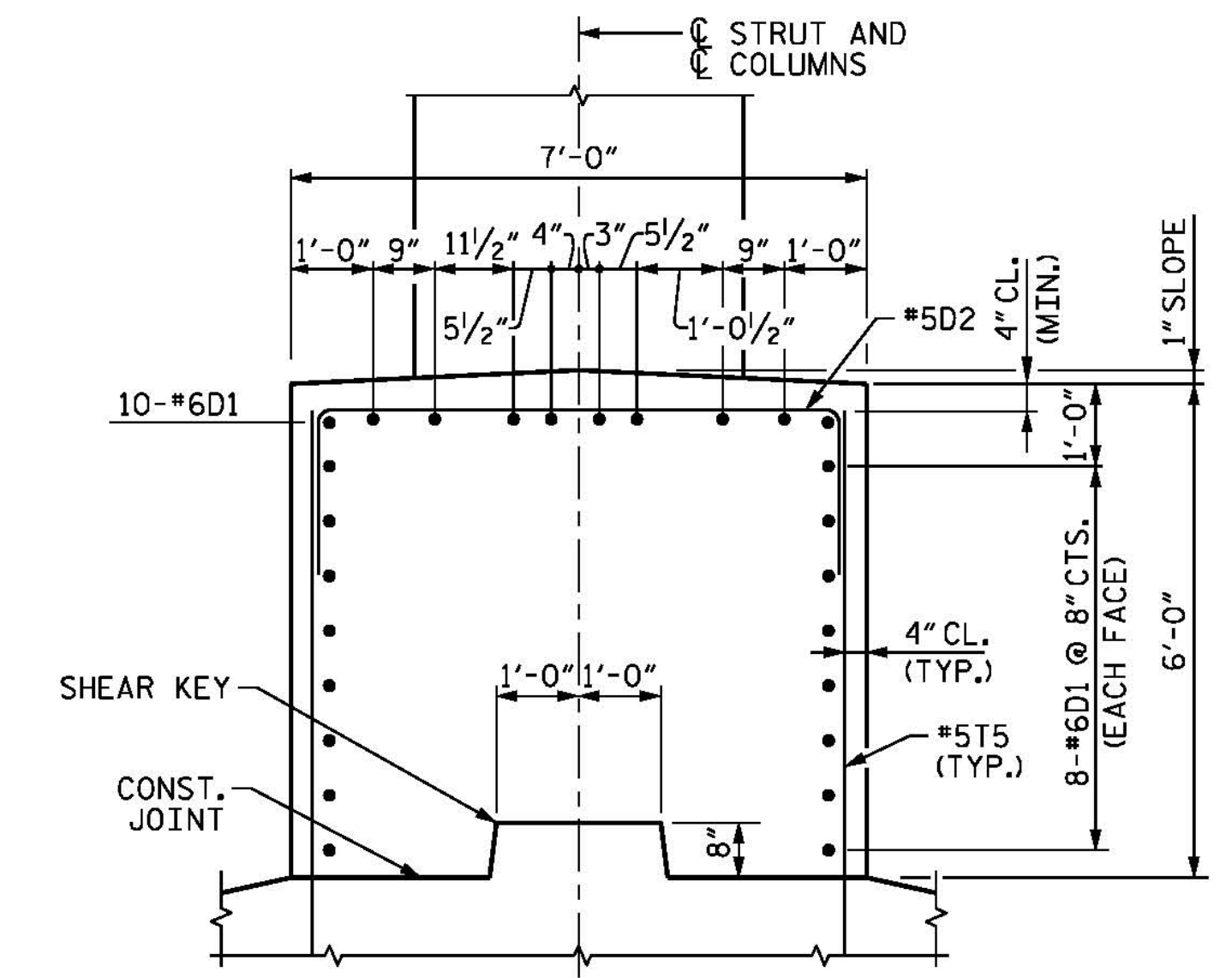


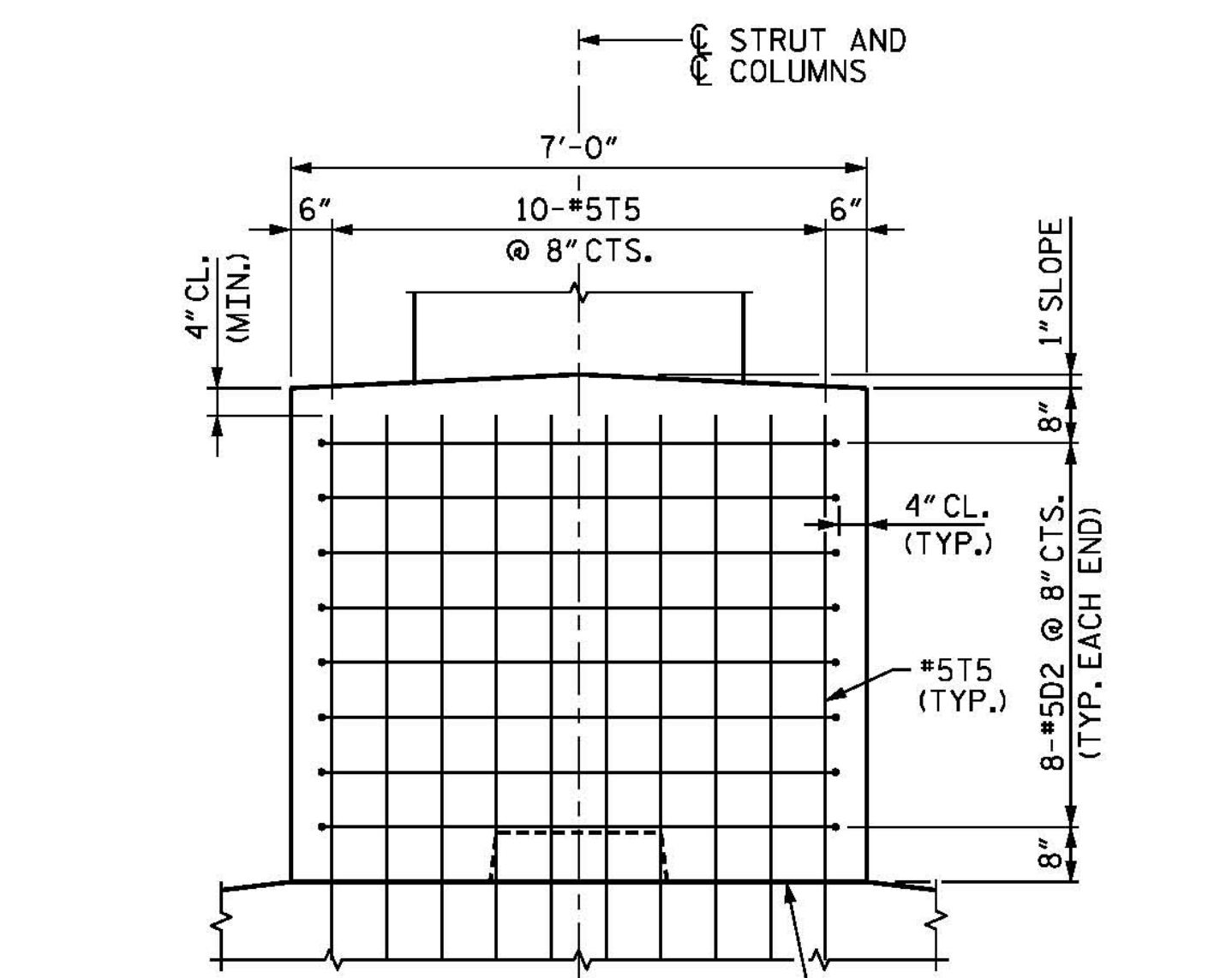
NOTES

FOR NOTES, SEE SHEET 1 OF 5.

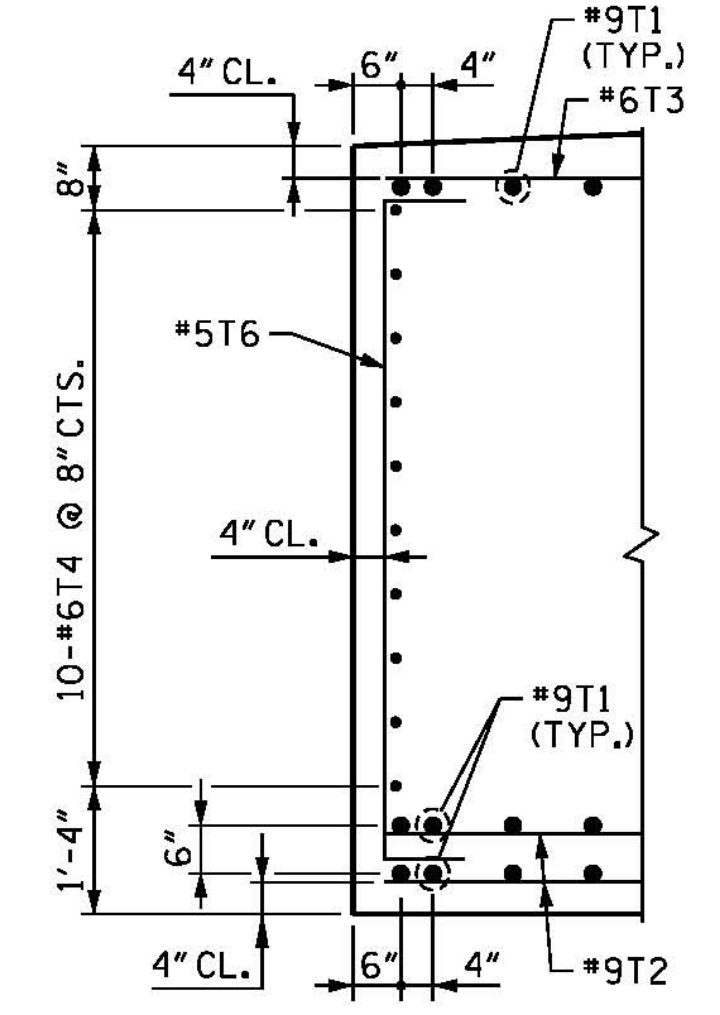


SECTION E-E

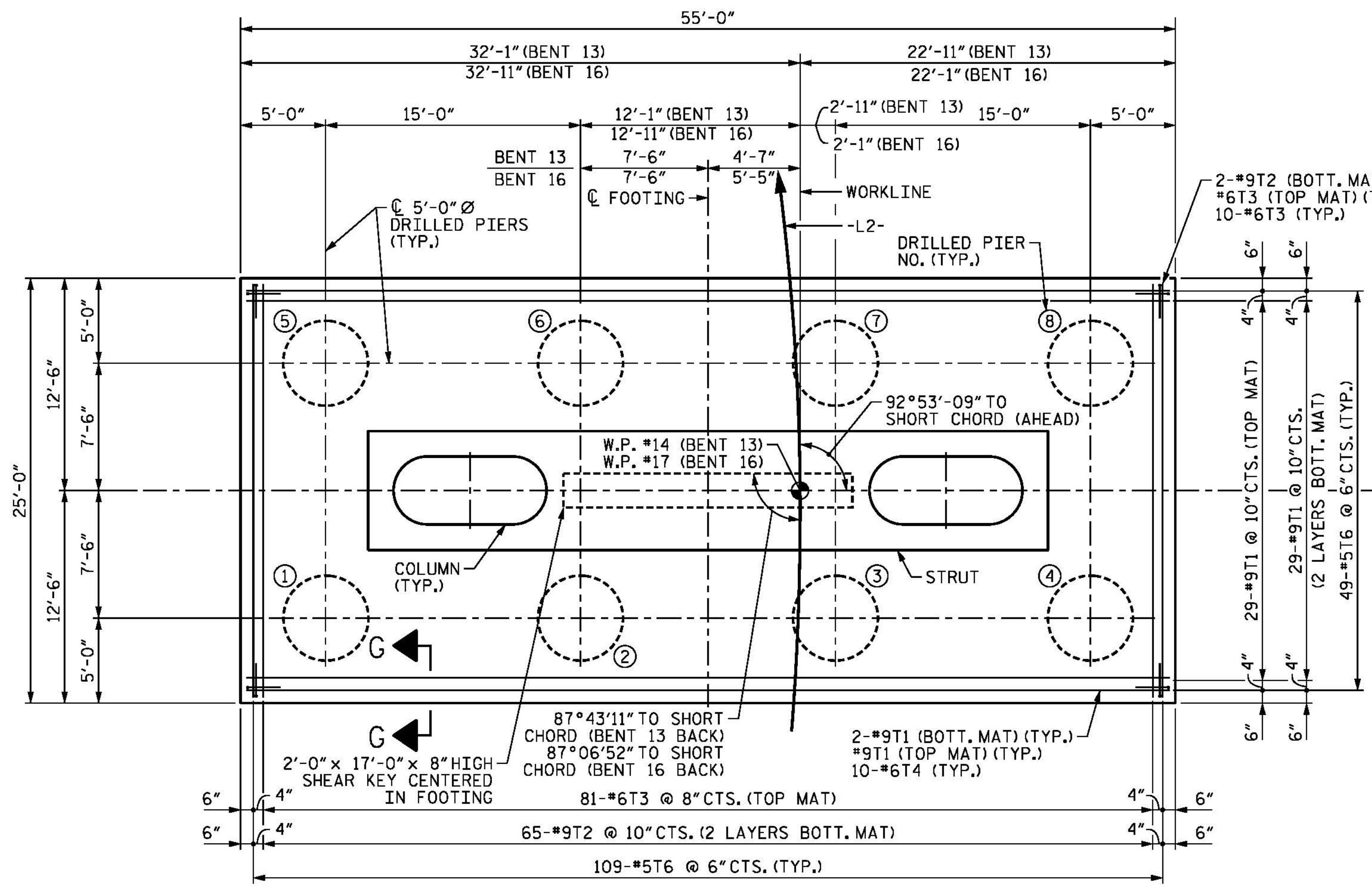
BARs MAY BE SHIFTED SLIGHTLY, AS NECESSARY, TO CLEAR COLUMN REINFORCING.



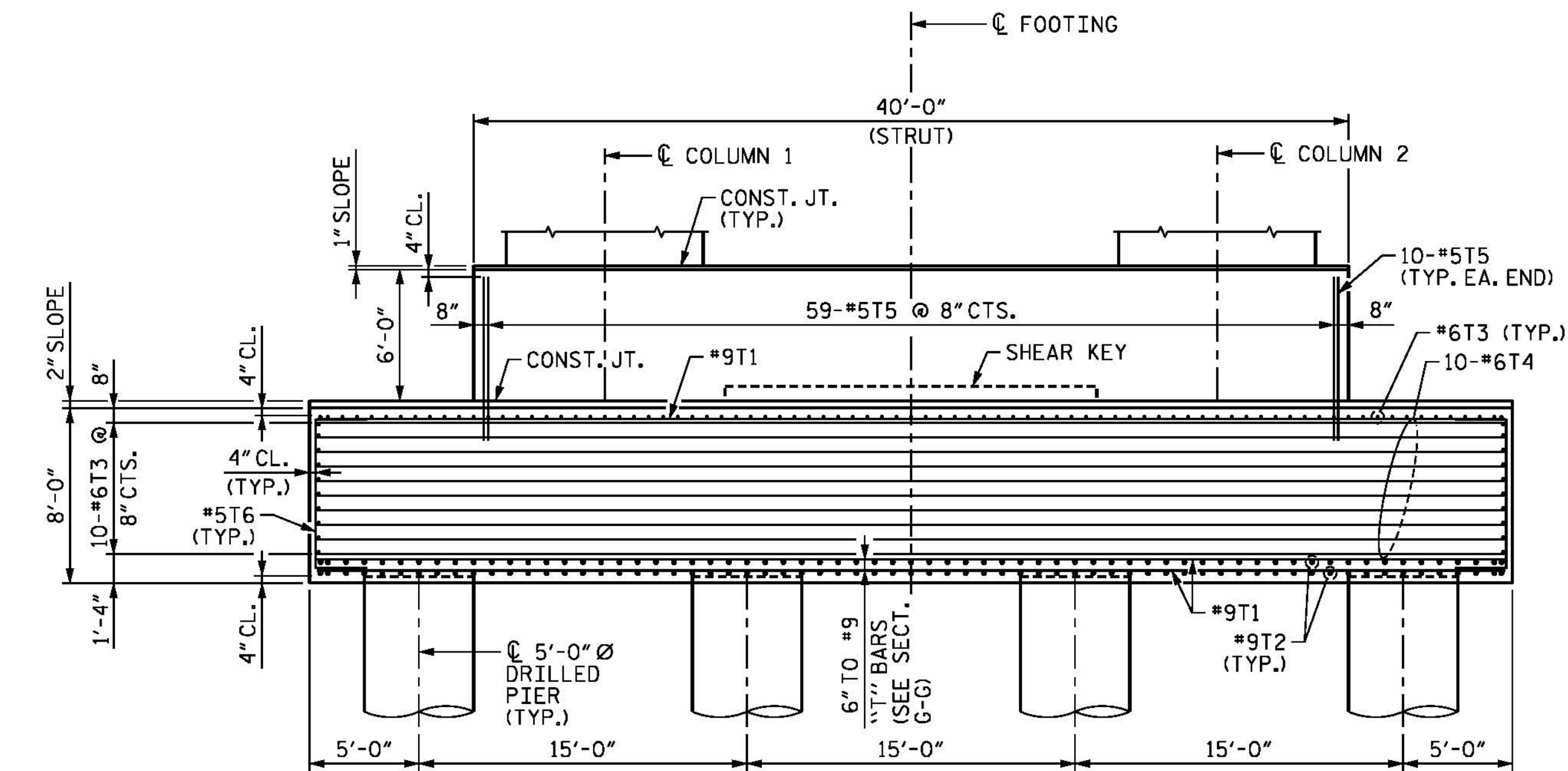
VIEW Z-Z



SECTION G-G

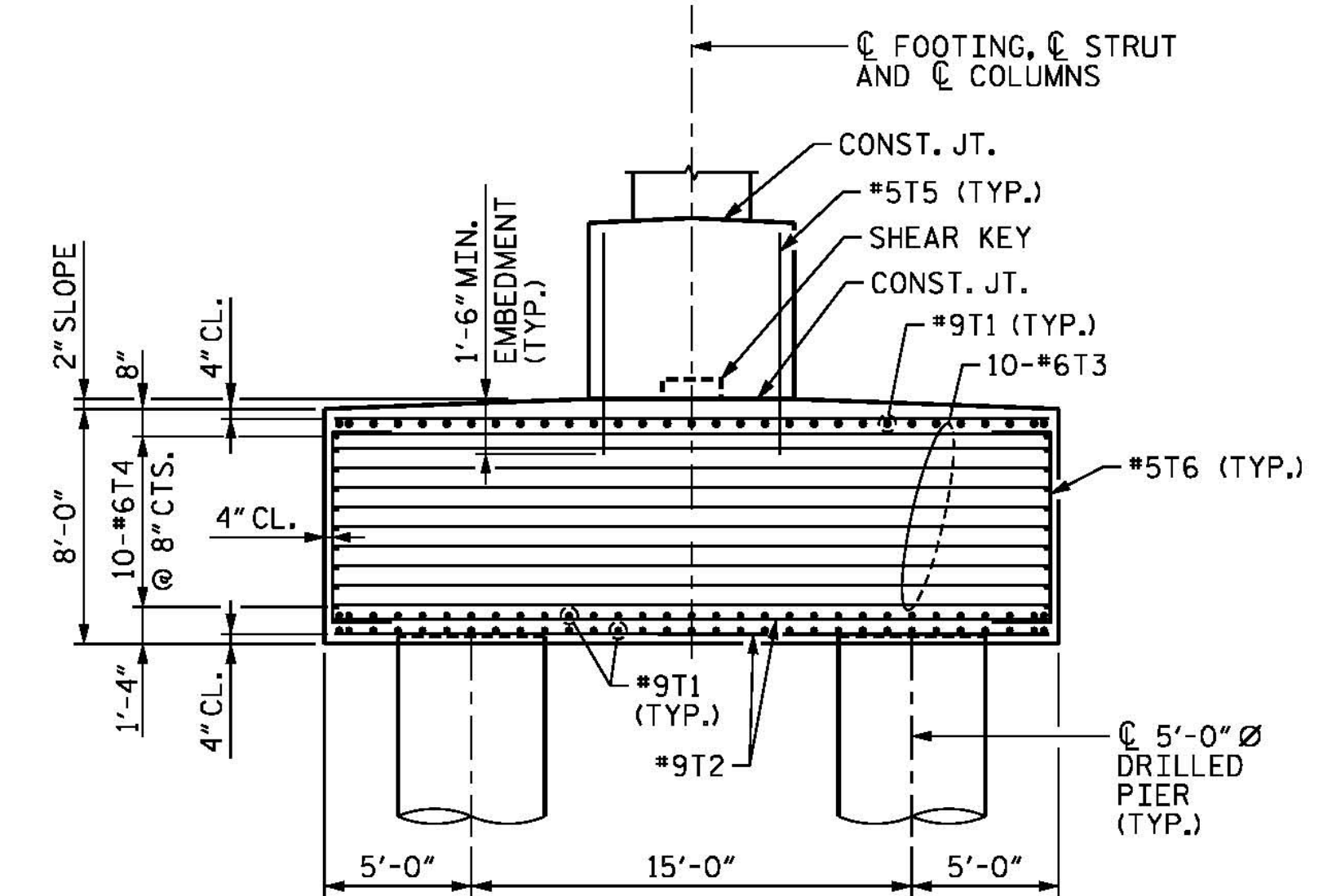


FOOTING PLAN



FOOTING AND STRUT ELEVATION

COLUMN AND STRUT REINFORCEMENT NOT SHOWN FOR CLARITY, SEE SHEETS 1 OF 5 AND 2 OF 5.

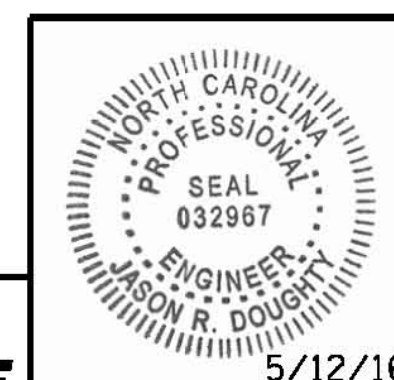


SIDE ELEVATION

COLUMN AND STRUT REINFORCEMENT NOT SHOWN FOR CLARITY, SEE SHEETS 1 OF 5 AND 2 OF 5.

PROJECT NO. B-4929
PENDER COUNTY
 STATION: 38+13.81 -L2-
 SHEET 3 OF 5 STEEL ALTERNATE

STATE OF NORTH CAROLINA
 DEPARTMENT OF TRANSPORTATION
 RALEIGH
 SUBSTRUCTURE
BENTS 13 AND 16
SECTIONS AND DETAILS



PARSONS BRINCKERHOFF
 434 FAYETTEVILLE STREET
 SUITE 1500
 RALEIGH, NC 27601
 LICENSE NO. F-0165

DocuSigned by:
Jason R. Doughty
 00F1C96448274F7...

REVISIONS						SHEET NO.
NO.	BY:	DATE:	NO.	BY:	DATE:	S-261
1			3			TOTAL SHEETS
2			4			278

DOCUMENT NOT CONSIDERED FINAL
UNLESS ALL SIGNATURES COMPLETED

5/12/2016 401_099_B4929_SMJ_IB13_3s.dgn

DESIGNED BY: E. ULLMER DATE: FEB 2016
 DRAWN BY: M. HOBBS DATE: FEB 2016
 CHECKED BY: B. LOFLIN DATE: MAY 2016
 DESIGN ENGINEER OF RECORD: J. DOUGHTY DATE: MAY 2016