

NOTES:

STIRRUPS AND "U" BARS IN CAP MAY BE SHIFTED SLIGHTLY AS NECESSARY TO CLEAR ANCHOR BOLTS.

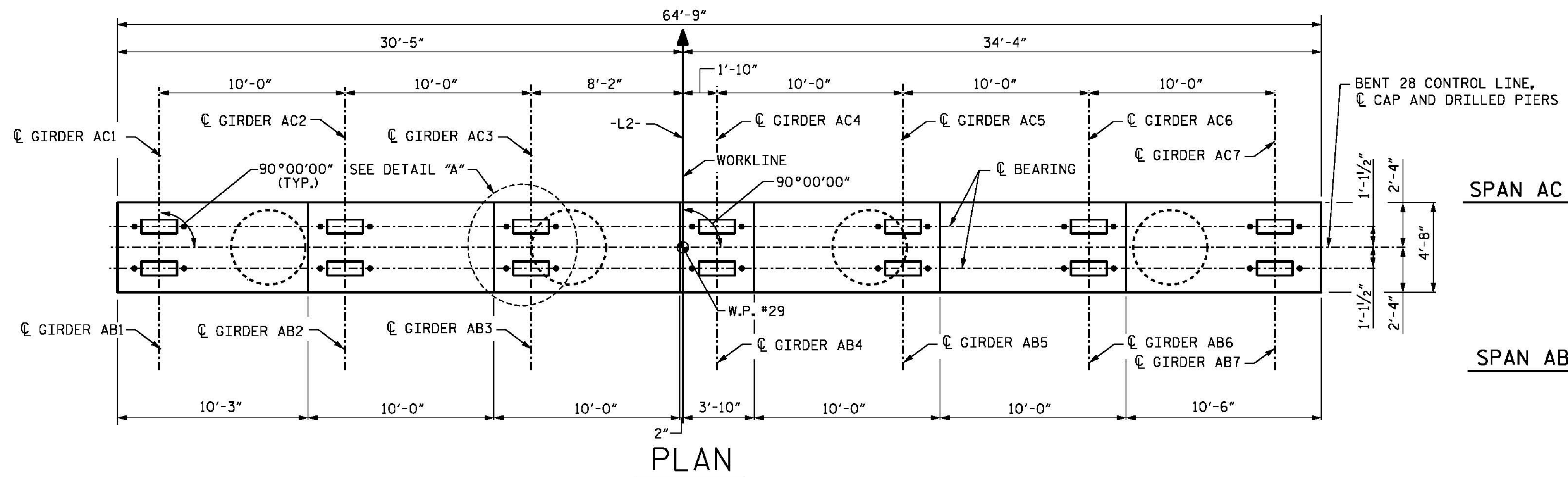
HOOKS IN #11M1 BARS MAY BE TURNED AS NECESSARY FOR PLACING REINFORCING STEEL. HOOKS MUST BE PLACED SUCH THAT 3" MIN. CONCRETE COVER IS PROVIDED TO THE FACE OF CAP.

ALL STEEL IN THE DRILLED PIERS IS INCLUDED IN THE PAY ITEMS FOR "EPOXY COATED REINFORCING STEEL" AND "EPOXY COATED SPIRAL COLUMN REINFORCING STEEL".

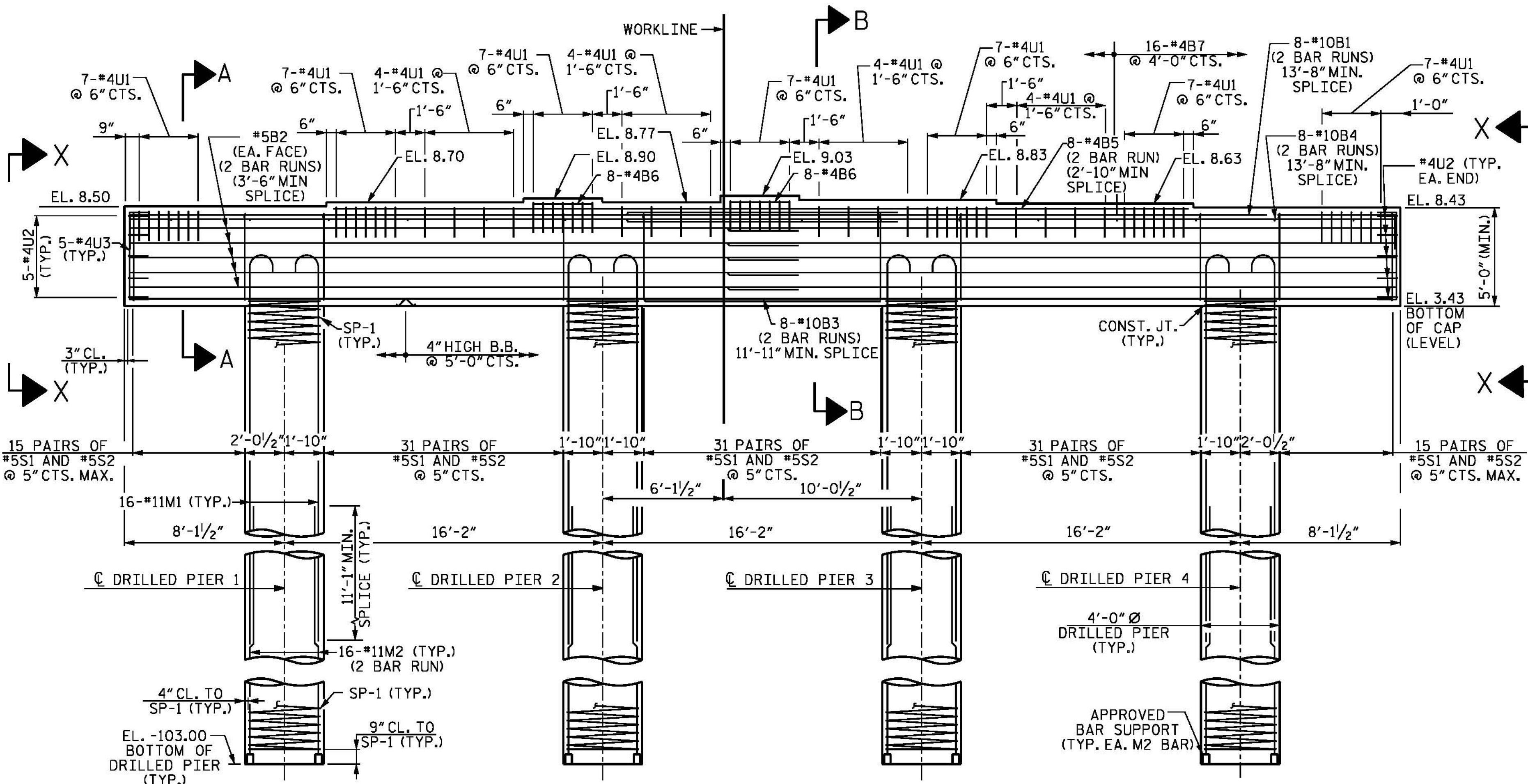
THE CONTRACTOR'S ATTENTION IS CALLED TO THE FACT THAT THE EPOXY COATED LONGITUDINAL REINFORCEMENT FOR THE DRILLED PIERS IS DETAILED WITH 3 FEET OF EXTRA LENGTH.

NO SEPARATE PAYMENT SHALL BE MADE FOR ANY ADDITIONAL STEEL REQUIRED IN CONSTRUCTION OF THE DRILLED PIER AS THIS IS CONSIDERED INCIDENTAL TO THE LINEAR FOOT PRICE FOR DRILLED PIER.

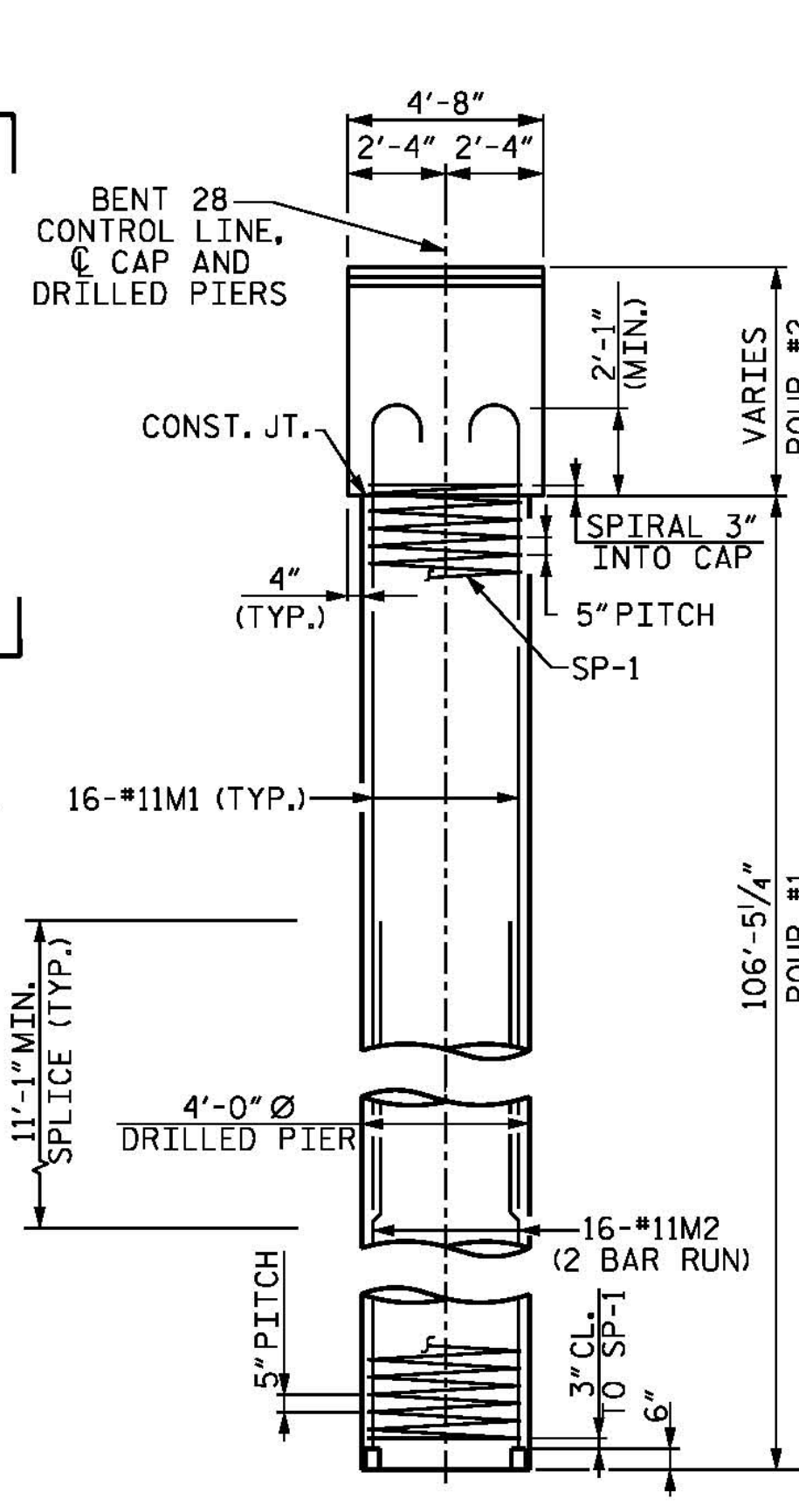
FOR SECTIONS A-A AND B-B AND VIEWS X-X AND Y-Y SEE SHEET 2 OF 2.



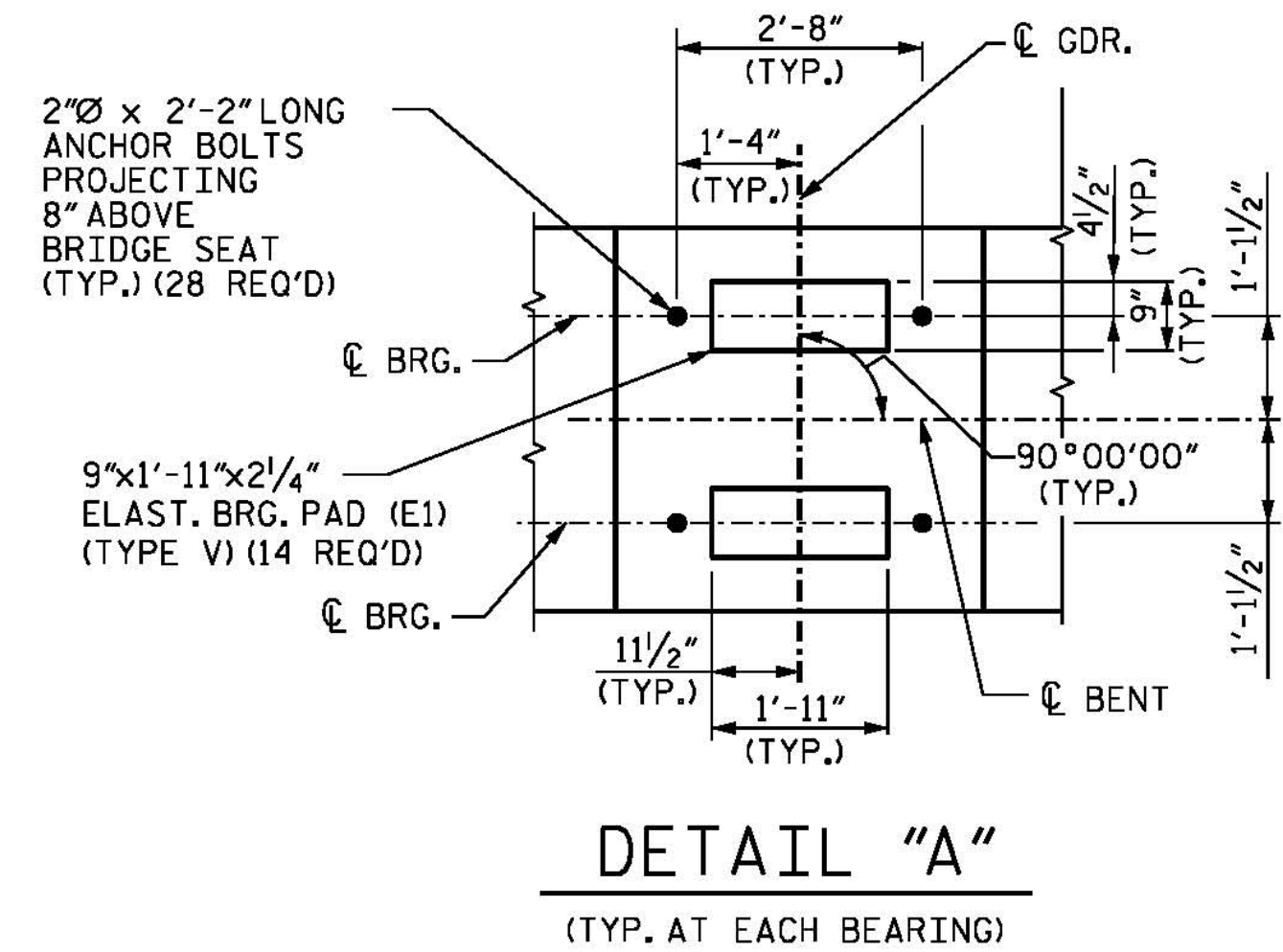
PLAN



ELEVATION

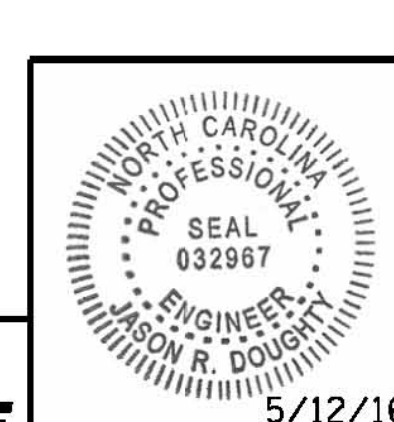


END ELEVATION



DETAIL "A"

PROJECT NO. B-4929
PENDER COUNTY
 STATION: 38+13.81 -L2-
 SHEET 1 OF 2



PARSONS BRINCKERHOFF
 434 FAYETTEVILLE STREET
 SUITE 1500
 RALEIGH, NC 27601
 LICENSE NO. F-0165

DocuSigned by:
 Jason R. Doughty

STATE OF NORTH CAROLINA
 DEPARTMENT OF TRANSPORTATION
 RALEIGH
 SUBSTRUCTURE
BENT 28
 PLAN AND ELEVATION

REVISIONS					
NO.	BY:	DATE:	NO.	BY:	DATE:
1			3		
2			4		

SHEET NO.
S-200
 TOTAL SHEETS
 278

DESIGNED BY: MJW/AMD DATE: JAN. 2016
 DRAWN BY: B. CALDWELL DATE: FEB. 2016
 CHECKED BY: J. SHERMAN DATE: MAR. 2016
 DESIGN ENGINEER OF RECORD: J. DOUGHTY DATE: MAY 2016

**DOCUMENT NOT CONSIDERED FINAL
 UNLESS ALL SIGNATURES COMPLETED**

5/12/2016
 400_393_B4929_SMU_IB281.dgn