

NOTES:

STIRRUPS AND "U" BARS IN CAP MAY BE SHIFTED SLIGHTLY AS NECESSARY TO CLEAR ANCHOR BOLTS.

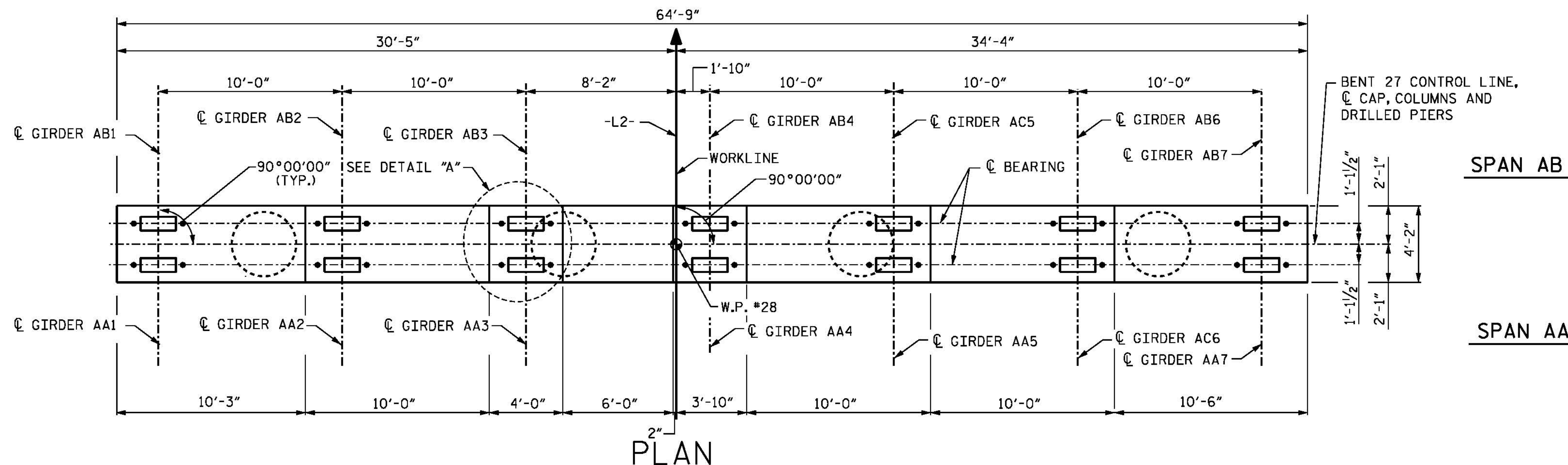
HOOKS IN #11M1 BARS MAY BE TURNED AS NECESSARY FOR PLACING REINFORCING STEEL. HOOKS MUST BE PLACED SUCH THAT 3" MIN. CONCRETE COVER IS PROVIDED TO THE FACE OF CAP.

ALL STEEL IN THE DRILLED PIERS IS INCLUDED IN THE PAY ITEMS FOR "EPOXY COATED REINFORCING STEEL" AND "EPOXY COATED SPIRAL COLUMN REINFORCING STEEL".

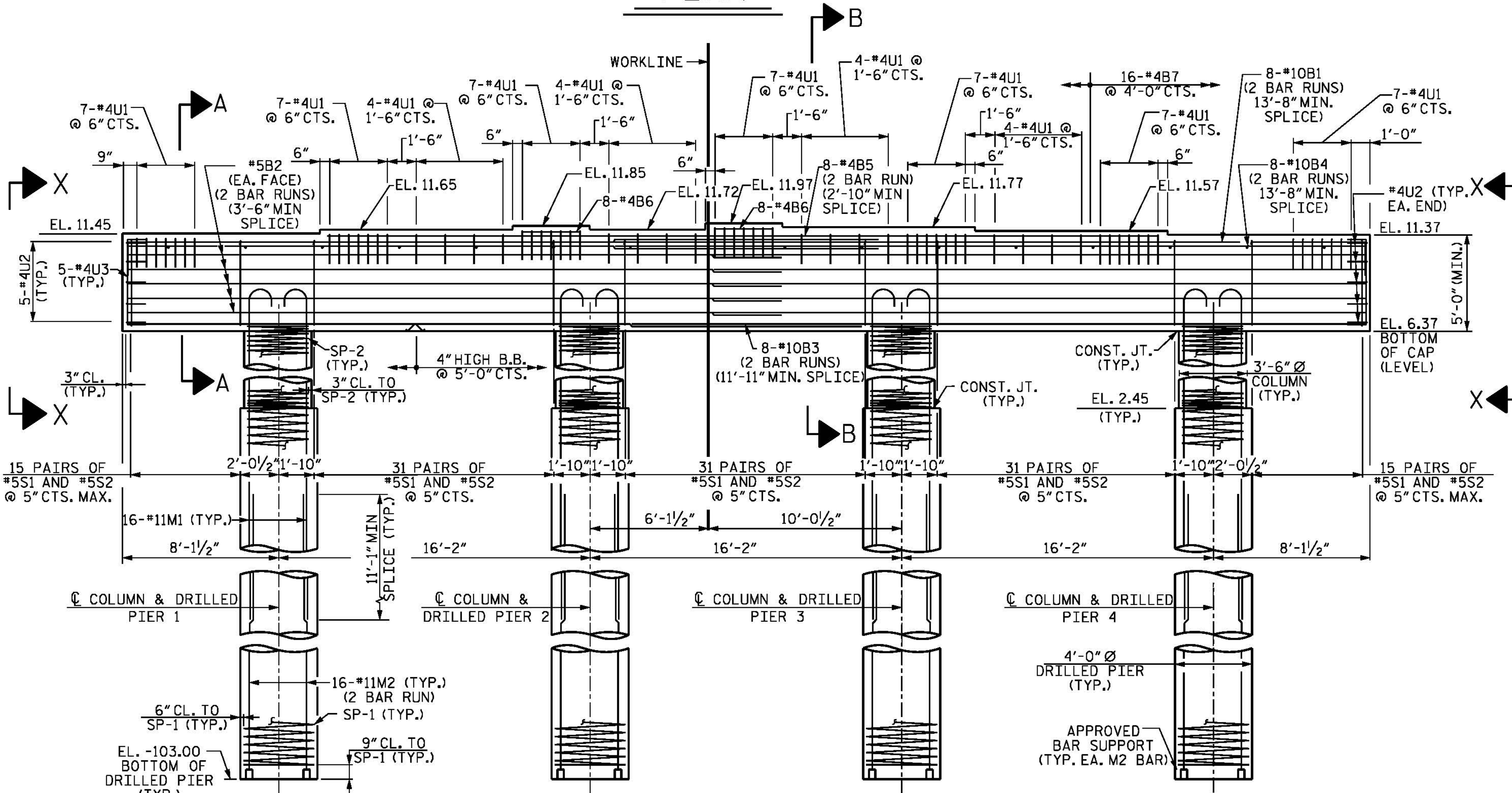
THE CONTRACTOR'S ATTENTION IS CALLED TO THE FACT THAT THE EPOXY COATED LONGITUDINAL REINFORCEMENT FOR THE DRILLED PIERS IS DETAILED WITH 3 FEET OF EXTRA LENGTH.

NO SEPARATE PAYMENT SHALL BE MADE FOR ANY ADDITIONAL STEEL REQUIRED IN CONSTRUCTION OF THE DRILLED PIER AS THIS IS CONSIDERED INCIDENTAL TO THE LINEAR FOOT PRICE FOR DRILLED PIER.

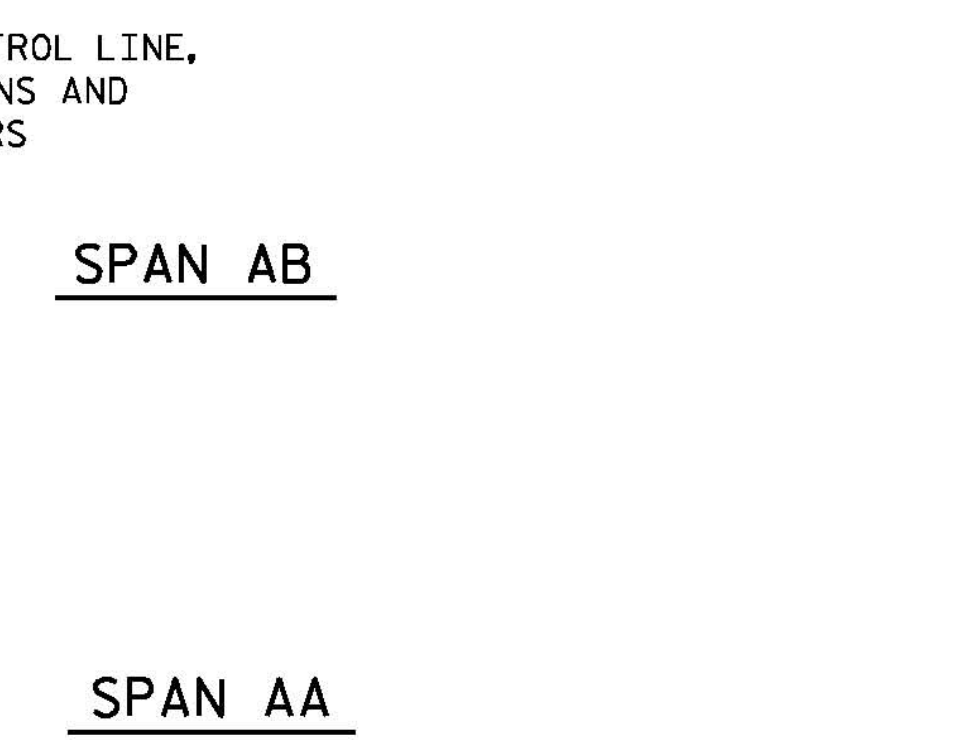
FOR SECTIONS A-A AND B-B AND VIEWS X-X AND Y-Y SEE SHEET 2 OF 2.



PLAN

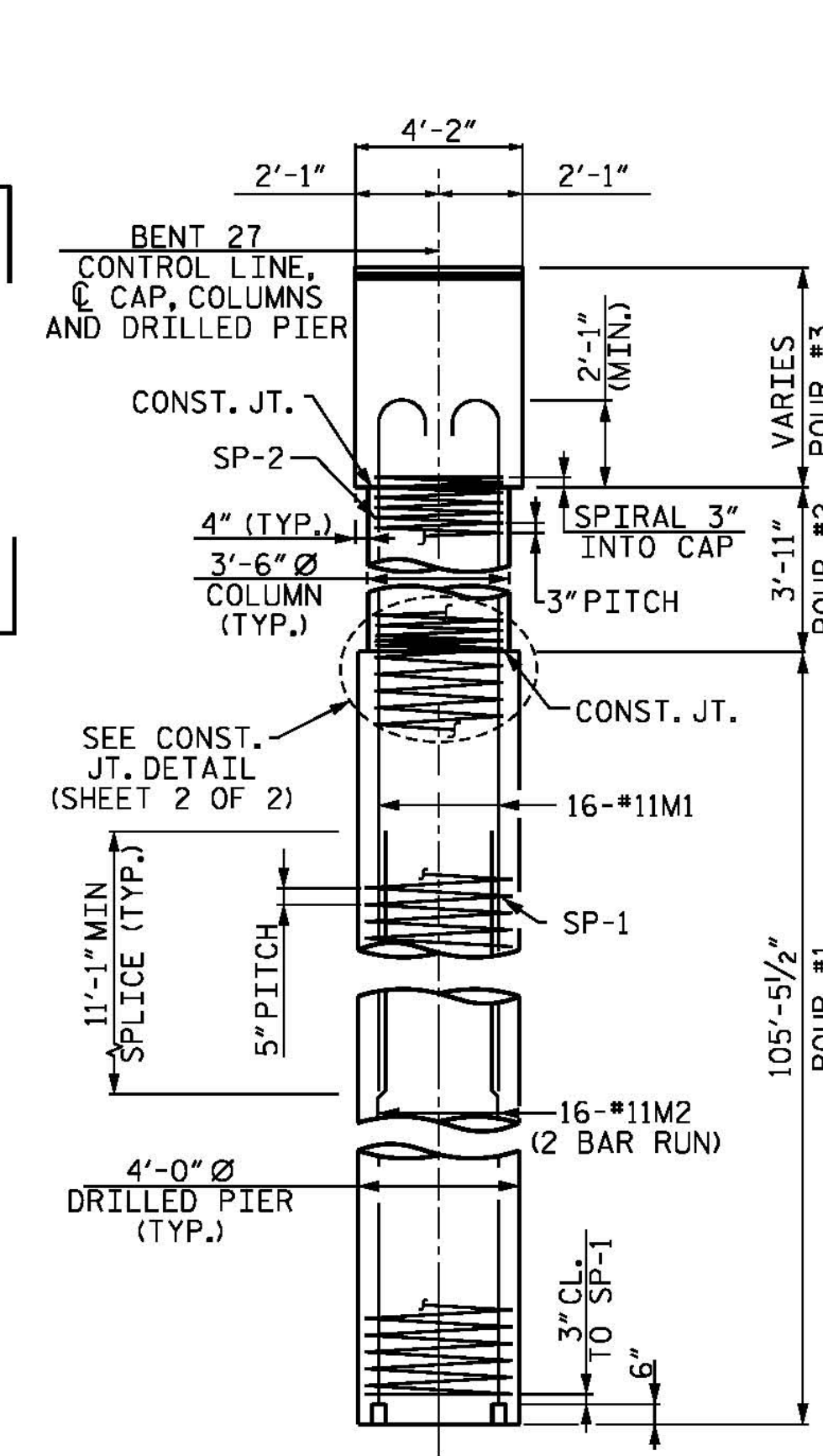


ELEVATION

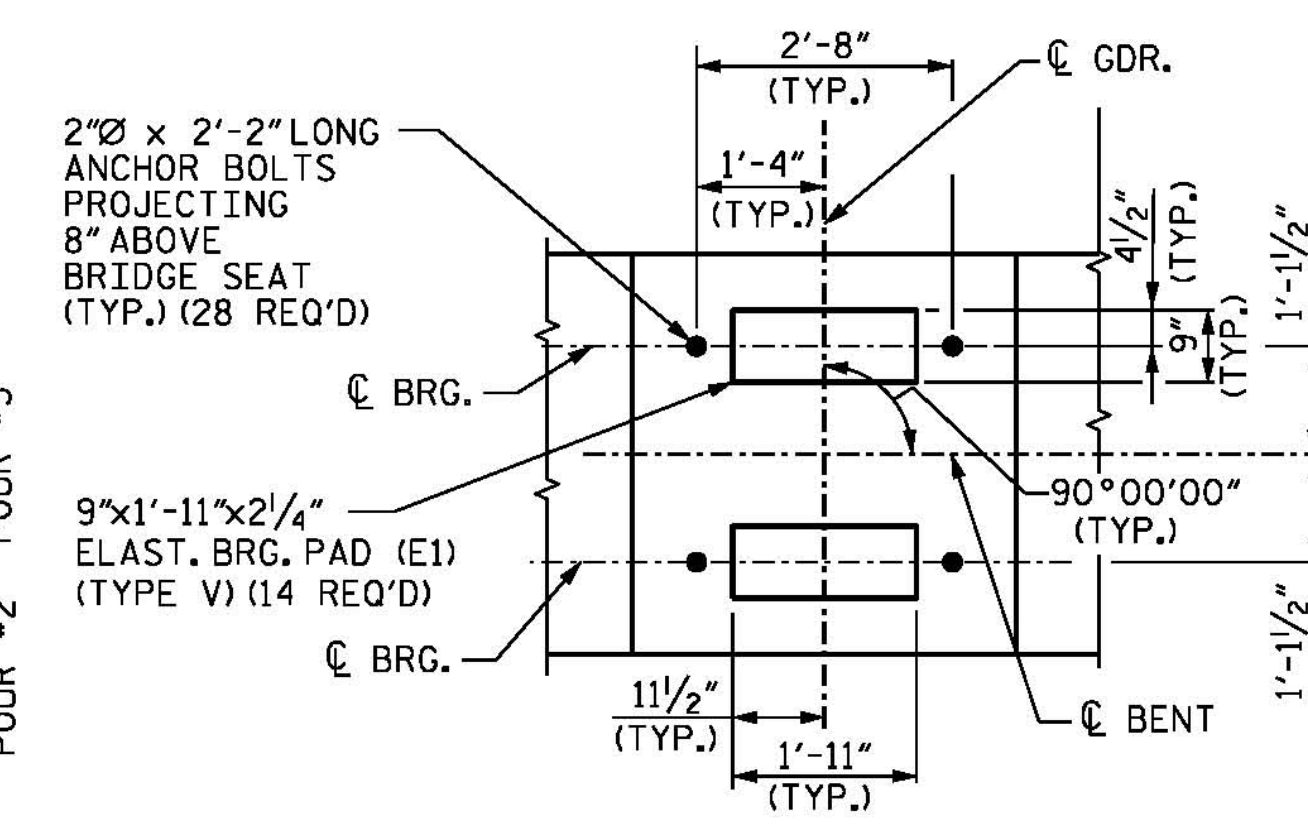


SPAN AB

SPAN AA



END ELEVATION



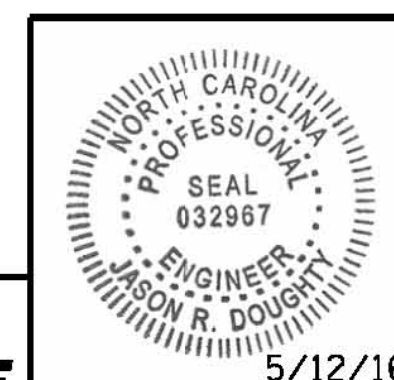
DETAIL "A"

(TYP. AT EACH BEARING)

PROJECT NO. B-4929  
PENDER COUNTY  
 STATION: 38+13.81 -L2-

SHEET 1 OF 2

STATE OF NORTH CAROLINA  
 DEPARTMENT OF TRANSPORTATION  
 RALEIGH  
 SUBSTRUCTURE  
**BENT 27**  
 PLAN AND ELEVATION



**PARSONS BRINCKERHOFF**  
 434 FAYETTEVILLE STREET  
 SUITE 1500  
 RALEIGH, NC 27601  
 LICENSE NO. F-0165

DocuSigned by:  
 Jason R. Doughty

REVISIONS					
NO.	BY:	DATE:	NO.	BY:	DATE:
1			3		
2			4		

SHEET NO.  
**S-198**  
 TOTAL SHEETS  
 278

**DOCUMENT NOT CONSIDERED FINAL  
 UNLESS ALL SIGNATURES COMPLETED**

5/12/2016 400\_389\_B4929\_SMU\_IB271.dgn

DESIGNED BY: MJW/AMD DATE: JAN. 2016  
 DRAWN BY: B. CALDWELL DATE: FEB. 2016  
 CHECKED BY: J. SHERMAN DATE: MAR. 2016  
 DESIGN ENGINEER OF RECORD: J. DOUGHTY DATE: MAY 2016