

NOTES:

STIRRUPS AND "U" BARS IN CAP MAY BE SHIFTED, AS NECESSARY TO CLEAR ANCHOR BOLTS.

HOOKS ON "V" AND "M" BARS MAY BE TURNED AS NECESSARY FOR PLACING REINFORCING STEEL.

"T" BARS IN FOOTING MAY BE SHIFTED AS NECESSARY TO CLEAR COLUMN AND DRILLED PIER REINFORCEMENT.

FOR FOUNDATION NOTES, SEE "FOUNDATION NOTES" SHEET.

FOR SECTIONS AND VIEWS, SEE SHEET 2 OF 5 AND SHEET 3 OF 5.

FOR FOOTING AND DRILLED PIER REINFORCING DETAILS, SEE SHEET 3 OF 5 AND SHEET 4 OF 5.

* FOOTING AND STRUT ARE SLOPED TO DRAIN.

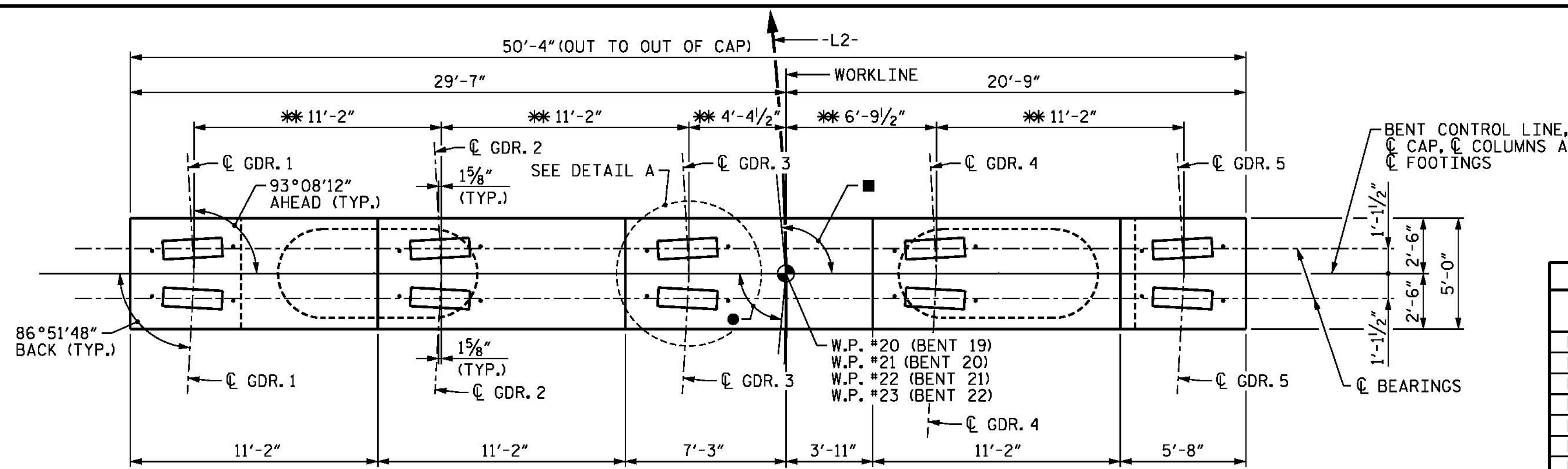
ALL STEEL IN THE DRILLED PIERS IS INCLUDED IN THE PAY ITEMS FOR "EPOXY COATED REINFORCING STEEL" AND "EPOXY COATED SPIRAL COLUMN REINFORCING STEEL".

THE CONTRACTOR'S ATTENTION IS CALLED TO THE FACT THAT THE LONGITUDINAL REINFORCEMENT FOR THE DRILLED PIERS ARE DETAILED WITH 3 FEET OF EXTRA LENGTH.

NO SEPARATE PAYMENT SHALL BE MADE FOR ANY ADDITIONAL STEEL REQUIRED IN CONSTRUCTION OF THE DRILLED PIER AS THIS IS CONSIDERED INCIDENTAL TO THE LINEAR FOOT PRICE FOR DRILLED PIER.

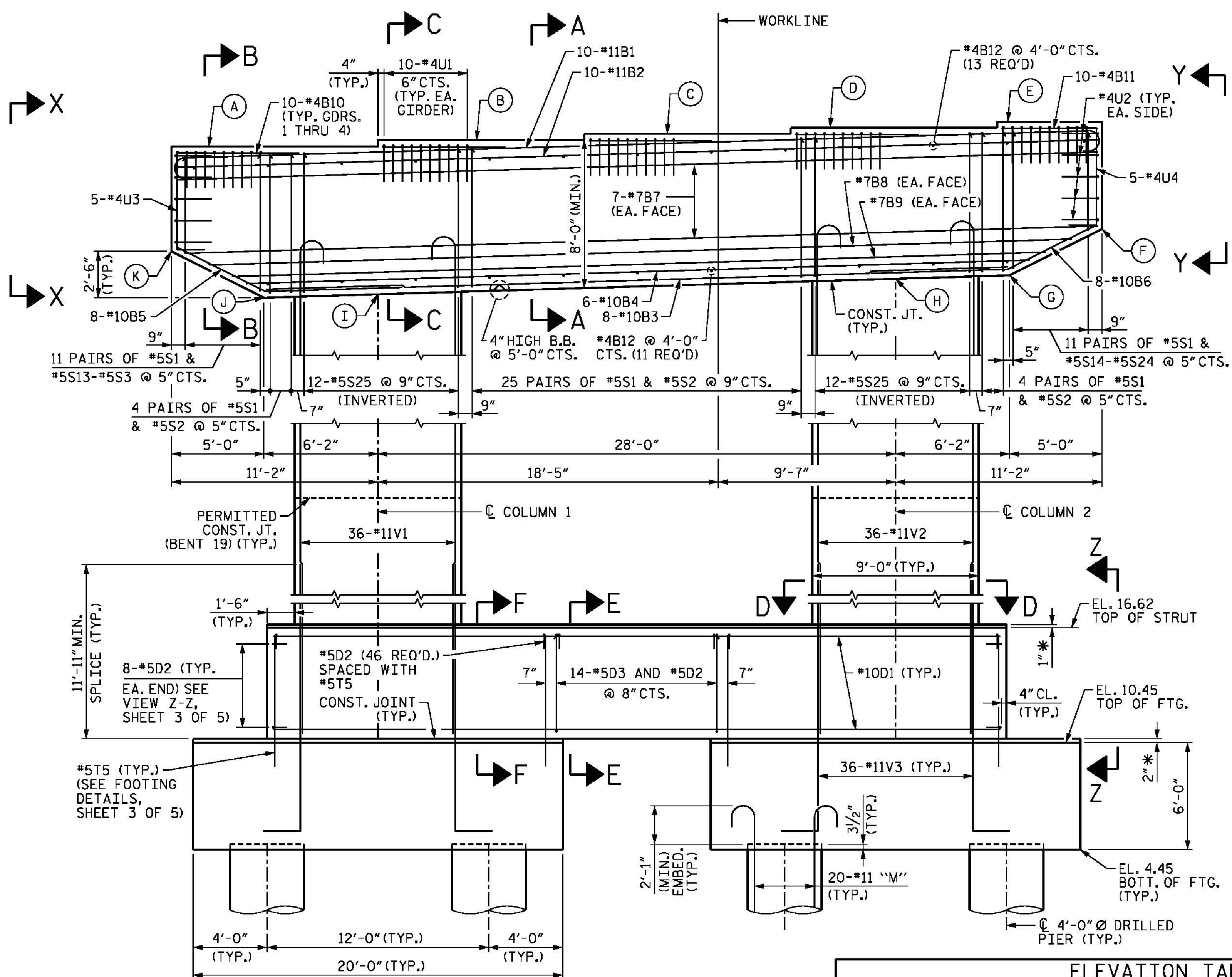
FOR MASS CONCRETE, SEE SPECIAL PROVISIONS.

BAR QUANTITY		
LOCATION	QUANTITY	
	"A"	"B"
BENT 19 COLUMN 1	38	24
BENT 19 COLUMN 2	38	26
BENT 20 COLUMN 1	51	--
BENT 20 COLUMN 2	53	--
BENT 21 COLUMN 1	41	--
BENT 21 COLUMN 2	43	--
BENT 22 COLUMN 1	29	--
BENT 22 COLUMN 2	31	--



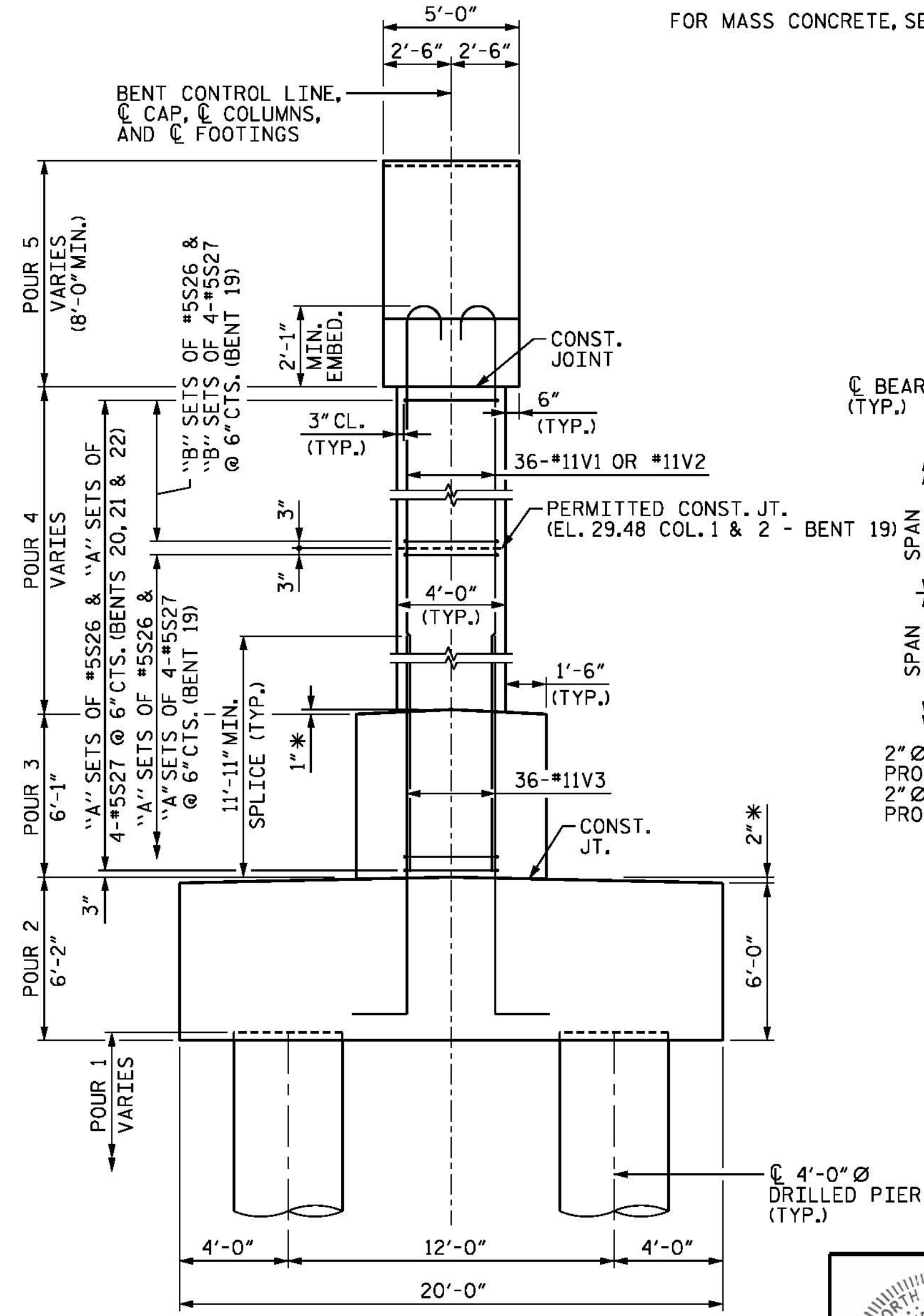
PLAN
 ** MEASURED ALONG BENT CONTROL LINE

- 93°08'12" TO SHORT CHORD (AHEAD)
- 86°51'48" TO SHORT CHORD (BACK)

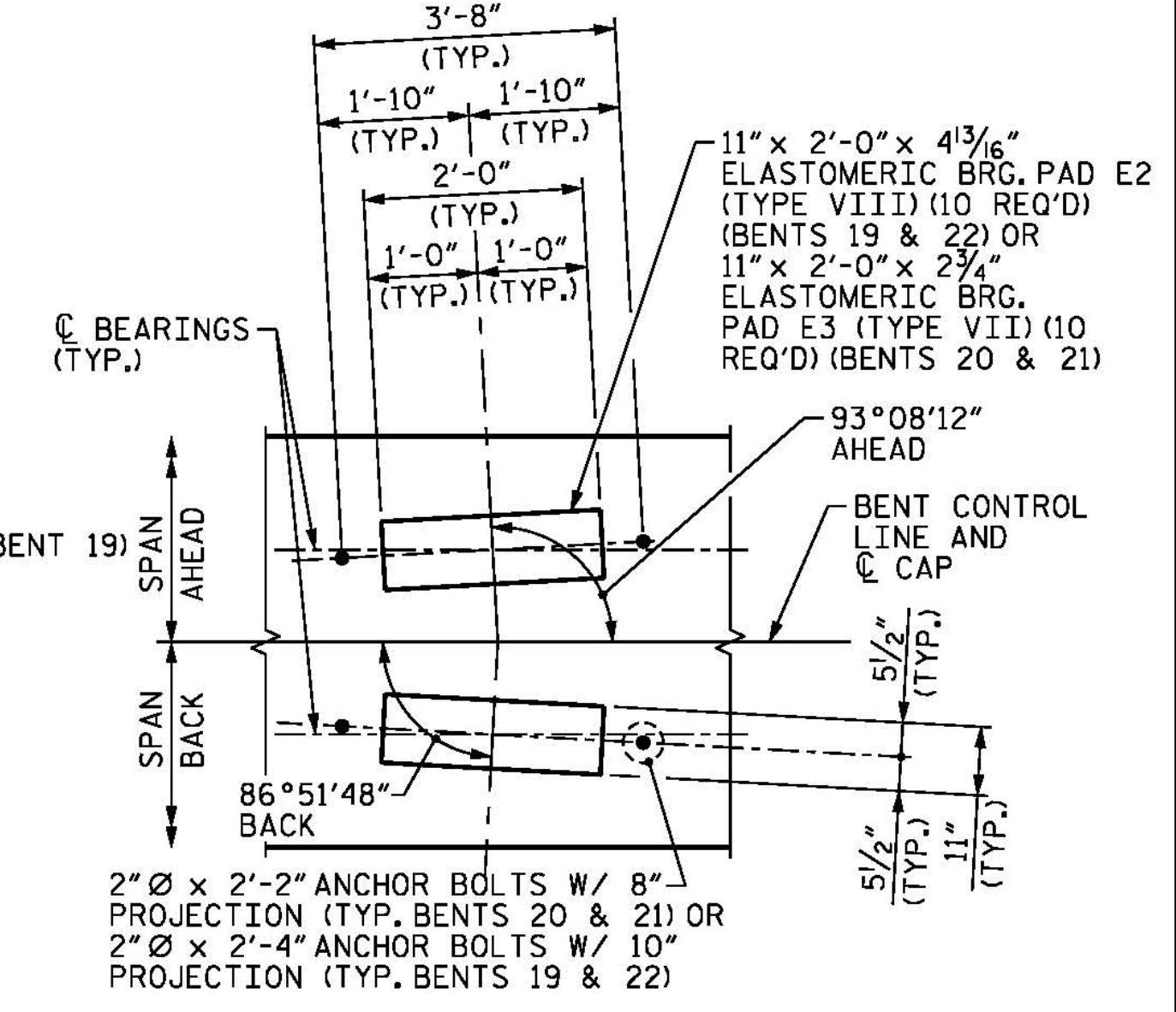


ELEVATION

FOOTING REINFORCEMENT NOT SHOWN FOR CLARITY, SEE SHEET 3 OF 5.



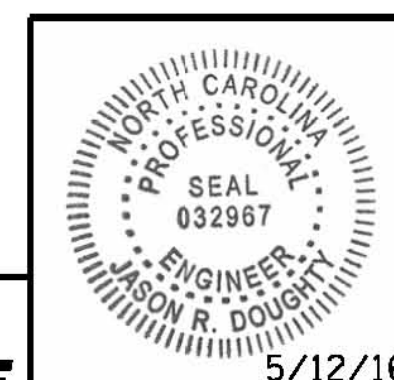
END VIEW



DETAIL A

ELEVATION TABLE											
BENT	A	B	C	D	E	F	G	H	I	J	K
19	49.50	49.84	50.17	50.51	50.84	45.02	42.52	42.33	41.49	41.31	43.81
20	44.27	44.61	44.94	45.28	45.62	39.80	37.30	37.11	36.27	36.09	38.59
21	38.87	39.21	39.54	39.88	40.22	34.40	31.90	31.71	30.87	30.69	33.19
22	33.30	33.63	33.97	34.31	34.64	28.82	26.32	26.13	25.29	25.11	27.61

PROJECT NO. B-4929
 PENDER COUNTY
 STATION: 38+13.81 -L2-
 SHEET 1 OF 5



STATE OF NORTH CAROLINA
 DEPARTMENT OF TRANSPORTATION
 RALEIGH
 SUBSTRUCTURE
 BENTS 19 THROUGH 22
 PLAN AND ELEVATION

PARSONS BRINCKERHOFF
 434 FAYETTEVILLE STREET
 SUITE 1500
 RALEIGH, NC 27601
 LICENSE NO. F-0165

DocuSigned by:
 Jason R. Doughty
 00F1C96448274F7...

REVISIONS					
NO.	BY:	DATE:	NO.	BY:	DATE:
1			3		
2			4		

SHEET NO.
S-185
 TOTAL SHEETS
 278

**DOCUMENT NOT CONSIDERED FINAL
 UNLESS ALL SIGNATURES COMPLETED**

5/11/2016
 400_363_B4929_SMU_IB19_1.dgn

DESIGNED BY: J. BORUTA DATE: MAR 2016
 DRAWN BY: K. WHITE DATE: MAR 2016
 CHECKED BY: J. DOUGHTY DATE: MAR 2016
 DESIGN ENGINEER OF RECORD: J. DOUGHTY DATE: MAY 2016