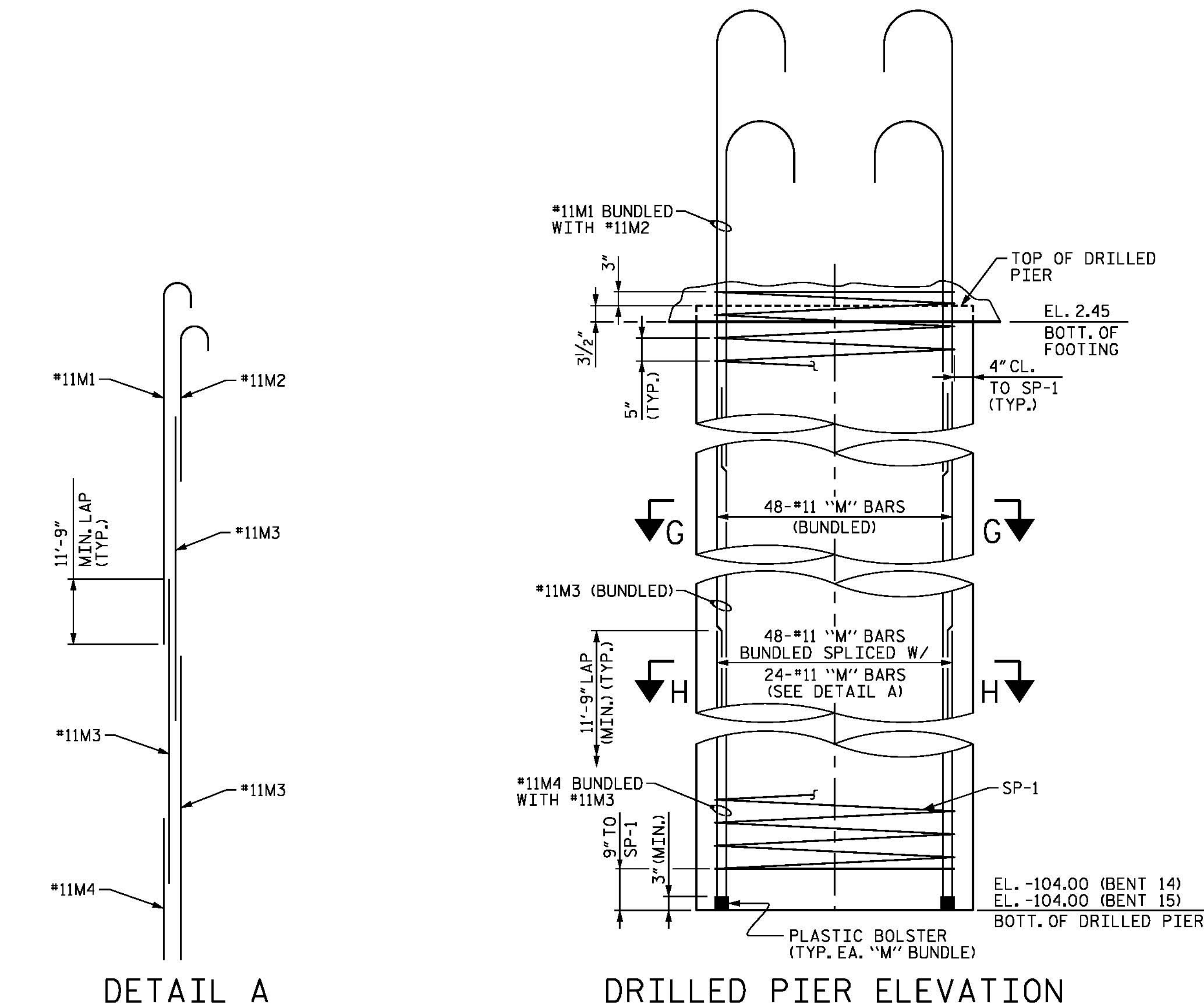


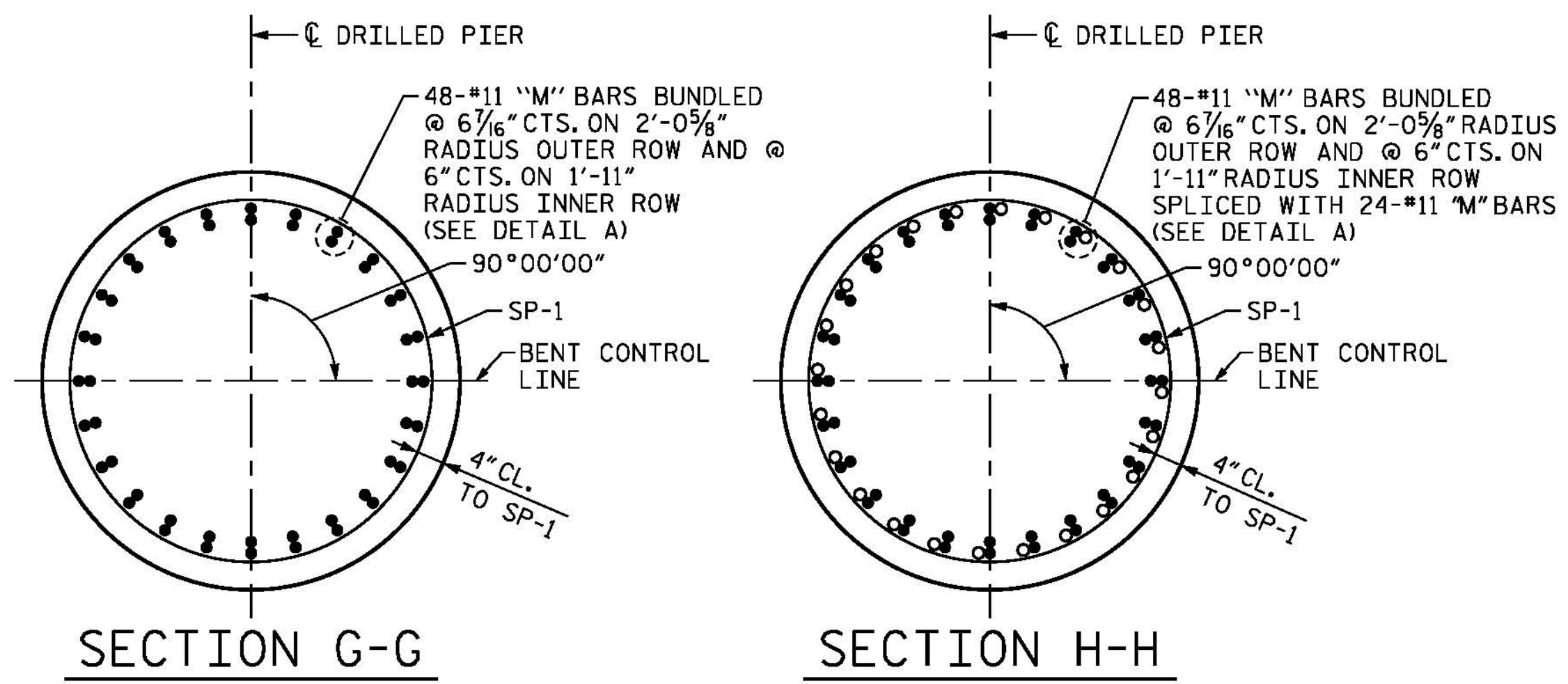
NOTES

FOR NOTES, SEE SHEET 1 OF 5.
FOR BAR TYPES, SEE SHEET 5 OF 5.



DETAIL A
ONE BUNDLE SHOWN, REINFORCING STEEL IS TYPICAL FOR EACH BUNDLE.

DRILLED PIER ELEVATION



SECTION G-G

SECTION H-H

BILL OF MATERIAL

BENT 14

BAR NUMBER	SIZE	TYPE	LENGTH	WEIGHT	BAR NUMBER	SIZE	TYPE	LENGTH	WEIGHT	BAR NUMBER	SIZE	TYPE	LENGTH	WEIGHT			
B1	11	11	1	53'-0"	3097	T1	57	9	STR	50'-3"	9738	T51	2	#6	STR	15'-0"	45
B2	11	11	STR	49'-10"	2912	T2	38	9	STR	30'-7"	3951	T52	2	#6	STR	15'-5"	46
B3	8	10	STR	40'-4"	1388	T3	38	9	STR	28'-0"	3618	T53	2	#6	STR	15'-9"	47
B4	6	10	STR	42'-0"	1084	T4	6	9	STR	39'-6"	806	T54	2	#6	STR	16'-2"	49
B5	8	10	2	10'-0"	344	T5	6	9	STR	44'-0"	898	T55	2	#6	STR	16'-7"	50
B6	8	10	3	10'-0"	344	T6	6	9	STR	48'-7"	991	T56	2	#6	STR	17'-0"	51
B7	14	7	STR	49'-10"	1426	T7	6	9	STR	53'-1"	1083	T57	2	#6	STR	17'-4"	52
B8	2	7	STR	47'-4"	193	T8	6	9	STR	57'-8"	1176	T58	2	#6	STR	17'-9"	53
B9	2	7	STR	44'-8"	183	T9	116	9	STR	18'-10"	7428	T59	2	#6	STR	18'-2"	55
B10	44	4	STR	6'-3"	184	T10	4	9	STR	9'-1"	124	T60	2	#6	STR	18'-6"	56
B11	11	4	STR	5'-2"	38	T11	4	9	STR	9'-6"	129	T61	20	#6	STR	38'-6"	1157
B12	24	4	STR	4'-6"	72	T12	4	9	STR	9'-11"	135	T62	44	#6	8	28'-5"	1878
						T13	4	9	STR	10'-3"	139	T63	138	#5	STR	7'-2"	1032
D1	26	6	STR	39'-4"	1536	T14	4	9	STR	10'-8"	145	T64	320	#5	9	8'-6"	2837
D2	48	5	9	10'-4"	517	T15	4	9	STR	11'-1"	151						
						T16	4	9	STR	11'-6"	156	U1	50	#4	9	8'-6"	284
M1	240	11	4	55'-1"	70238	T17	4	9	STR	11'-10"	161	U2	10	#4	9	7'-4"	49
M2	240	11	4	26'-8"	34003	T18	4	9	STR	12'-3"	167	U3	5	#4	9	8'-2"	27
M3	720	11	STR	55'-0"	210395	T19	4	9	STR	12'-8"	172	U4	5	#4	9	8'-0"	27
M4	240	11	STR	28'-7"	36447	T20	4	9	STR	13'-0"	177						
						T21	4	9	STR	13'-5"	182	V1	36	#11	4	52'-8"	10073
S1	110	5	5	4'-1"	468	T22	4	9	STR	13'-10"	188	V2	36	#11	4	53'-7"	10249
S2	66	5	6	19'-0"	1308	T23	4	9	STR	14'-3"	194	V3	64	#11	STR	23'-0"	7821
S3	2	5	6	18'-9"	39	T24	4	9	STR	14'-7"	198	V4	136	#11	12	21'-2"	15294
S4	2	5	6	18'-4"	38	T25	4	9	STR	15'-0"	204						
S5	2	5	6	17'-11"	37	T26	4	9	STR	15'-5"	210						
S6	2	5	6	17'-5"	36	T27	4	9	STR	15'-9"	214						
S7	2	5	6	17'-0"	35	T28	4	9	STR	16'-2"	220						
S8	2	5	6	16'-7"	35	T29	4	9	STR	16'-7"	226						
S9	2	5	6	16'-2"	34	T30	4	9	STR	17'-0"	231						
S10	2	5	6	15'-8"	33	T31	4	9	STR	17'-4"	236						
S11	2	5	6	15'-3"	32	T32	4	9	STR	17'-9"	241						
S12	2	5	6	14'-10"	31	T33	4	9	STR	18'-2"	247						
S13	2	5	6	14'-5"	30	T34	4	9	STR	18'-6"	252						
S14	2	5	6	18'-11"	39	T35	58	6	STR	18'-10"	1641	SP-1	10	*	10	3,471'-6"	36,208
S15	2	5	6	18'-7"	39	T36	2	6	STR	9'-1"	27						
S16	2	5	6	18'-3"	38	T37	2	6	STR	9'-6"	29						
S17	2	5	6	17'-9"	37	T38	2	6	STR	9'-11"	30						
S18	2	5	6	17'-5"	36	T39	2	6	STR	10'-3"	31						
S19	2	5	6	17'-0"	35	T40	2	6	STR	10'-8"	32						
S20	2	5	6	16'-7"	35	T41	2	6	STR	11'-1"	33						
S21	2	5	6	16'-3"	34	T42	2	6	STR	11'-6"	35						
S22	2	5	6	15'-10"	33	T43	2	6	STR	11'-10"	36						
S23	2	5	6	15'-5"	32	T44	2	6	STR	12'-3"	37						
S24	2	5	6	15'-0"	31	T45	2	6	STR	12'-8"	38						
S25	24	5	6	20'-4"	509	T46	2	6	STR	13'-0"	39						
S26	392	5	7	14'-1"	5758	T47	2	6	STR	13'-5"	40						
S27	184	5	7	12'-10"	2463	T48	2	6	STR	13'-10"	42						
S28	784	5	11	4'-6"	3680	T49	2	6	STR	14'-3"	43						
						T50	2	6	STR	14'-7"	44						

EPOXY COATED REINFORCING STEEL LBS. 467,153

EPOXY COATED SPIRAL COLUMN REINFORCING STEEL LBS. 36,208

CLASS "AA" CONCRETE BREAKDOWN
POUR #2 - FOOTING C.Y. 373.2
POUR #3 - STRUT C.Y. 61.5
POUR #4 - COLUMNS C.Y. 104.6
POUR #5 - CAP C.Y. 74.0

CLASS "AA" CONCRETE C.Y. 613.3

5'-0" Ø DRILLED PIERS QUANTITIES:
DRILLED PIER LIN. FT. 1067.4
POUR 1 - DRILLED PIER C.Y. 776.3
PERMANENT STEEL CASING FOR 5'-0" Ø DRILLED PIERS LIN. FT. 427.4
CSL TUBES LIN. FT. 5,412
SPT TESTING EA. 10

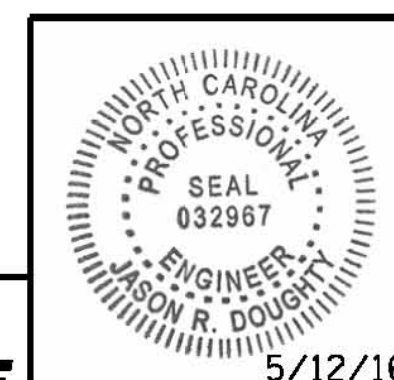
* THE SP-1 SPIRAL REINFORCING STEEL SHALL BE W31 OR D-31 COLD DRAWN WIRE OR #5 PLAIN DEFORMED BAR.

PROJECT NO. **B-4929**

PENDER COUNTY

STATION: **38+13.81 -L2-**

SHEET 4 OF 5



PARSONS BRINCKERHOFF
434 FAYETTEVILLE STREET
SUITE 1500
RALEIGH, NC 27601
LICENSE NO. F-0165

DocuSigned by:
Jason R. Doughty
00F1C8648274F7...

STATE OF NORTH CAROLINA
DEPARTMENT OF TRANSPORTATION
RALEIGH
SUBSTRUCTURE
BENTS 14 AND 15
BILL OF MATERIALS

REVISIONS						SHEET NO.	
NO.	BY:	DATE:	NO.	BY:	DATE:	S-178	
1			3			TOTAL SHEETS	
2			4			278	

DOCUMENT NOT CONSIDERED FINAL UNLESS ALL SIGNATURES COMPLETED

5/10/2016 400_349_B4929_SMU_IB14_4.dgn

DESIGNED BY: E. ULLMER DATE: MAR 2016
DRAWN BY: M. HOBBS DATE: MAR 2016
CHECKED BY: B. LOFLIN DATE: MAR 2016
DESIGN ENGINEER OF RECORD: J. DOUGHTY DATE: MAY 2016