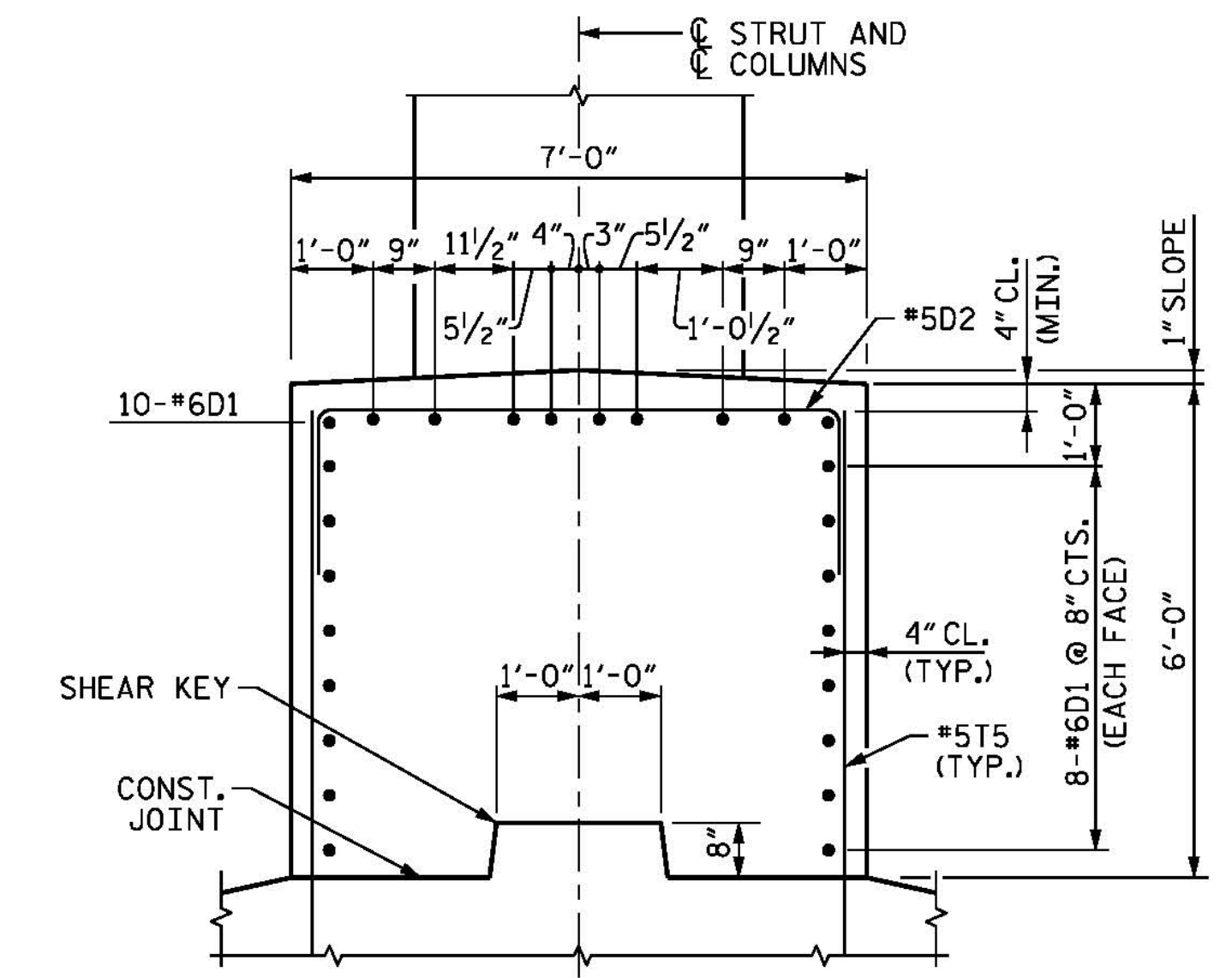


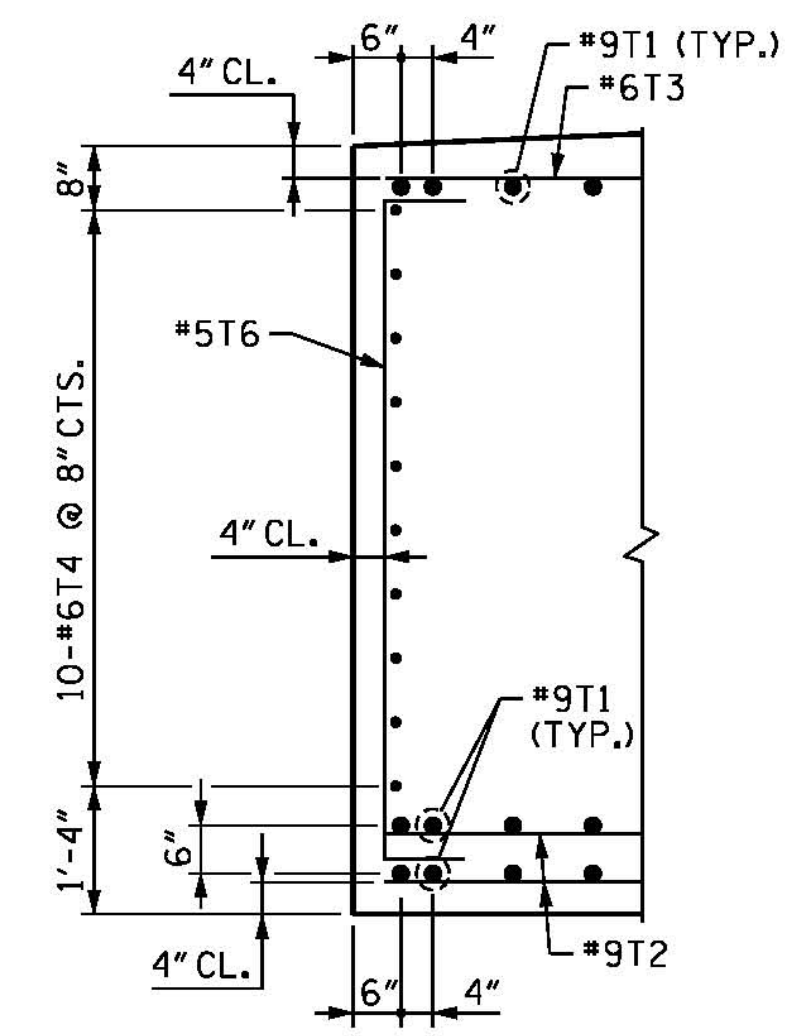
NOTES

FOR NOTES, SEE SHEET 1 OF 5.

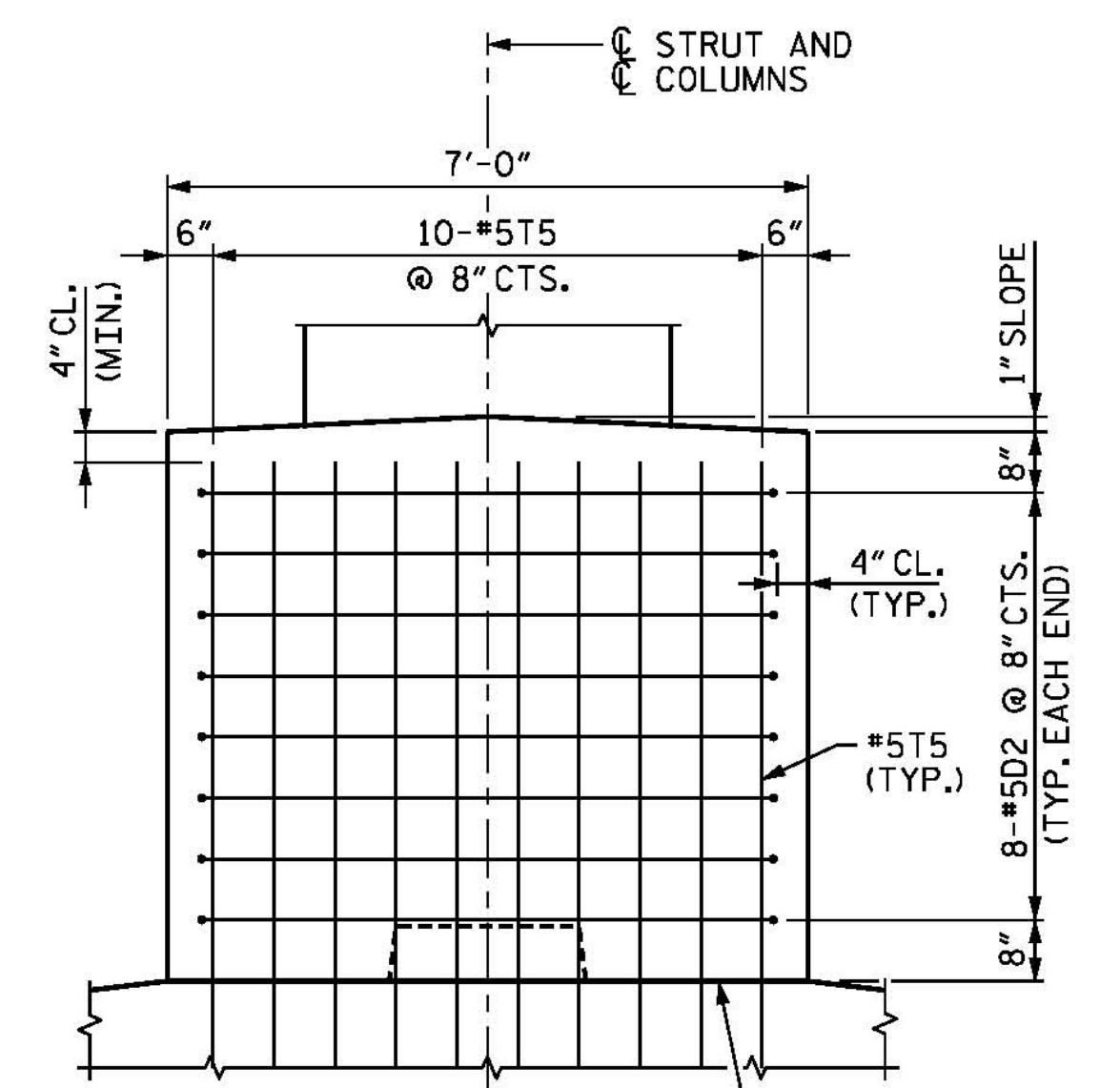


SECTION E-E

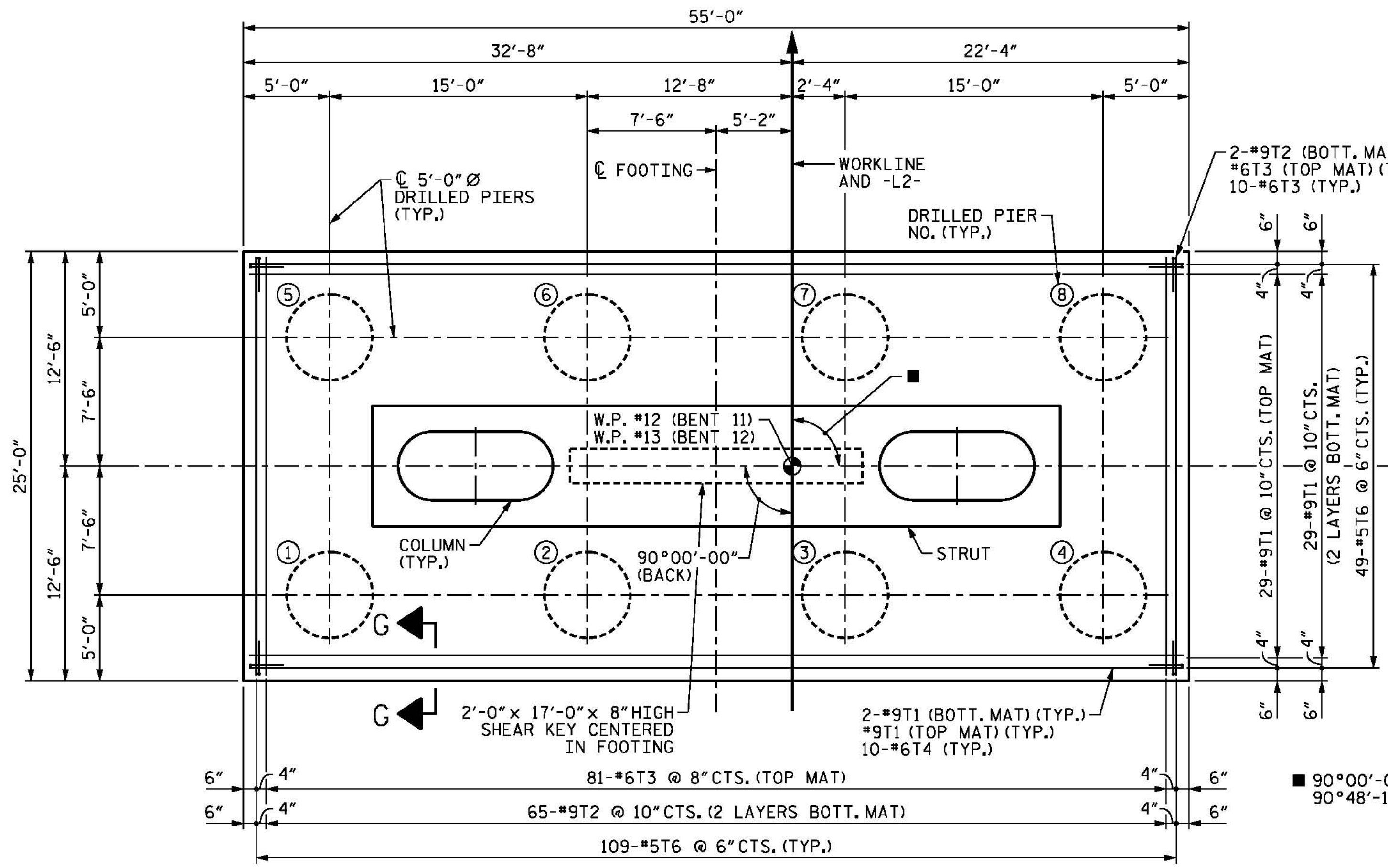
BARs MAY BE SHIFTED SLIGHTLY, AS NECESSARY, TO CLEAR COLUMN REINFORCING.



SECTION G-G

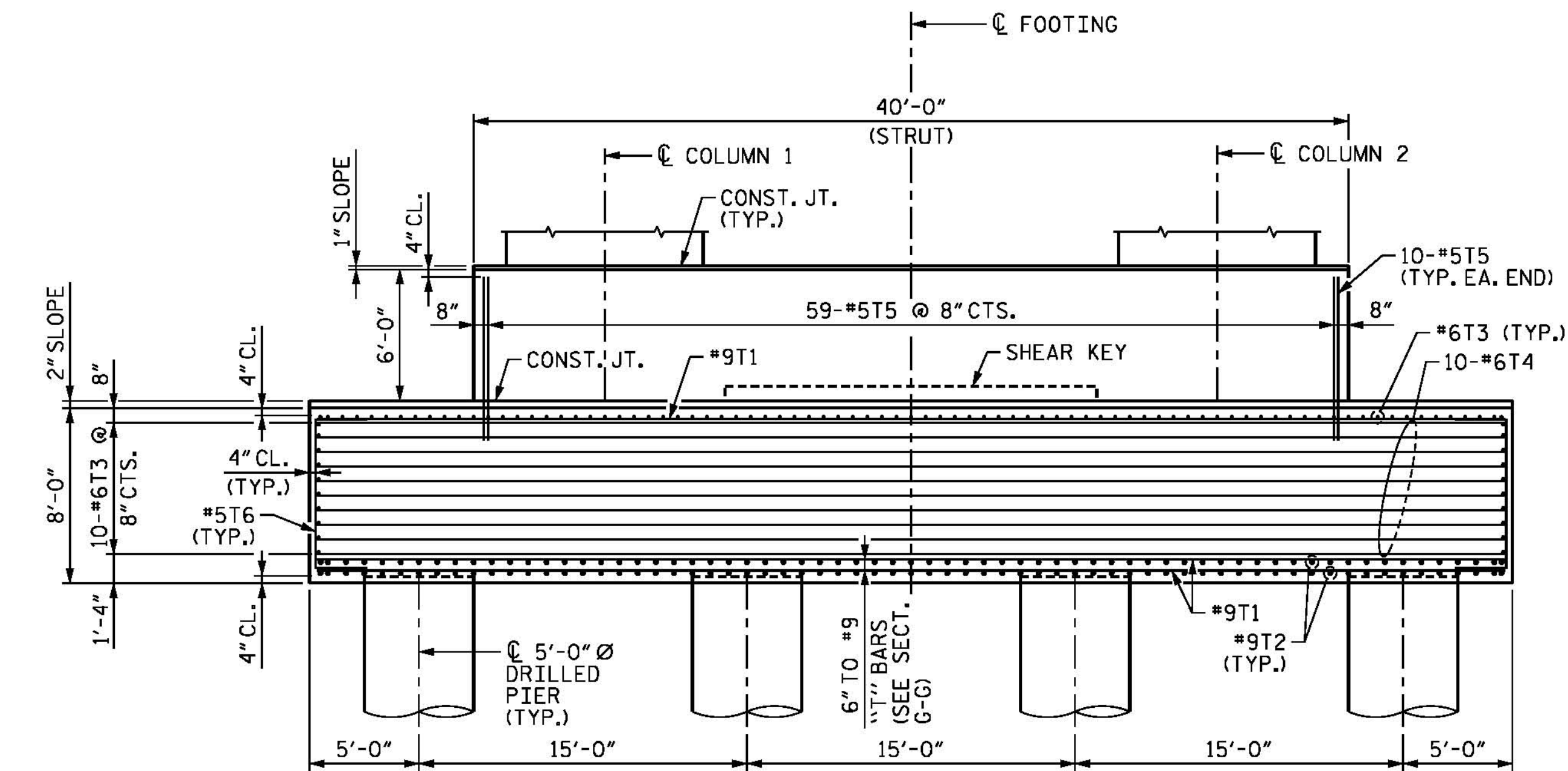


VIEW Z-Z



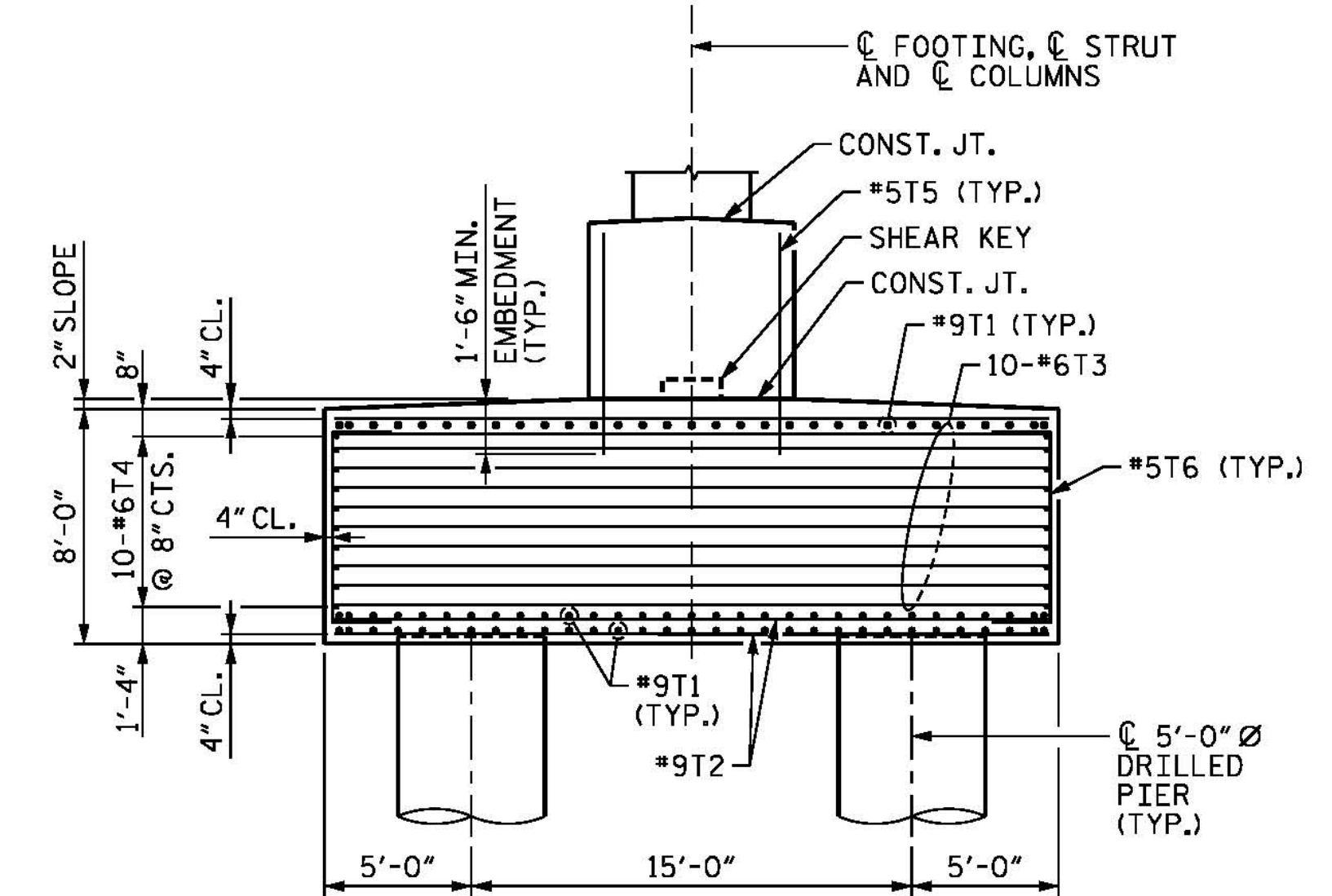
FOOTING PLAN

■ 90°00'-00" (BENT 11 AHEAD)
90°48'-12" TO SHORT CHORD (BENT 12 AHEAD)



FOOTING AND STRUT ELEVATION

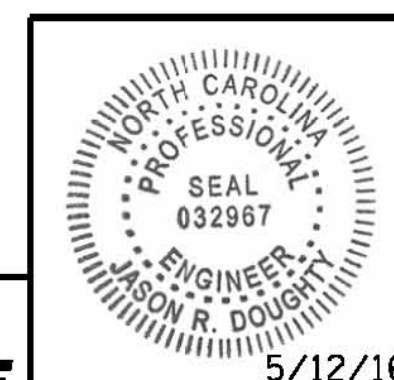
COLUMN AND STRUT REINFORCEMENT NOT SHOWN FOR CLARITY, SEE SHEETS 1 OF 5 AND 2 OF 5.



SIDE ELEVATION

COLUMN AND STRUT REINFORCEMENT NOT SHOWN FOR CLARITY, SEE SHEETS 1 OF 5 AND 2 OF 5.

PROJECT NO. B-4929
PENDER COUNTY
STATION: 38+13.81 -L2-
SHEET 3 OF 5



DocuSigned by:
Jason R. Doughty
00F1C96448274F7...

STATE OF NORTH CAROLINA
DEPARTMENT OF TRANSPORTATION
RALEIGH
SUBSTRUCTURE
BENTS 11 AND 12
SECTIONS AND DETAILS

REVISIONS						SHEET NO.
NO.	BY:	DATE:	NO.	BY:	DATE:	TOTAL SHEETS
1			3			278
2			4			

PARSONS BRINCKERHOFF
434 FAYETTEVILLE STREET
SUITE 1500
RALEIGH, NC 27601
LICENSE NO. F-0165

**DOCUMENT NOT CONSIDERED FINAL
UNLESS ALL SIGNATURES COMPLETED**

5/10/2016
400_327_B4929_SMU_IB11_3.dgn

DESIGNED BY: E. ULLMER DATE: FEB 2016
DRAWN BY: M. HOBBS DATE: MAR 2016
CHECKED BY: B. LOFLIN DATE: MAR 2016
DESIGN ENGINEER OF RECORD: J. DOUGHTY DATE: MAY 2016