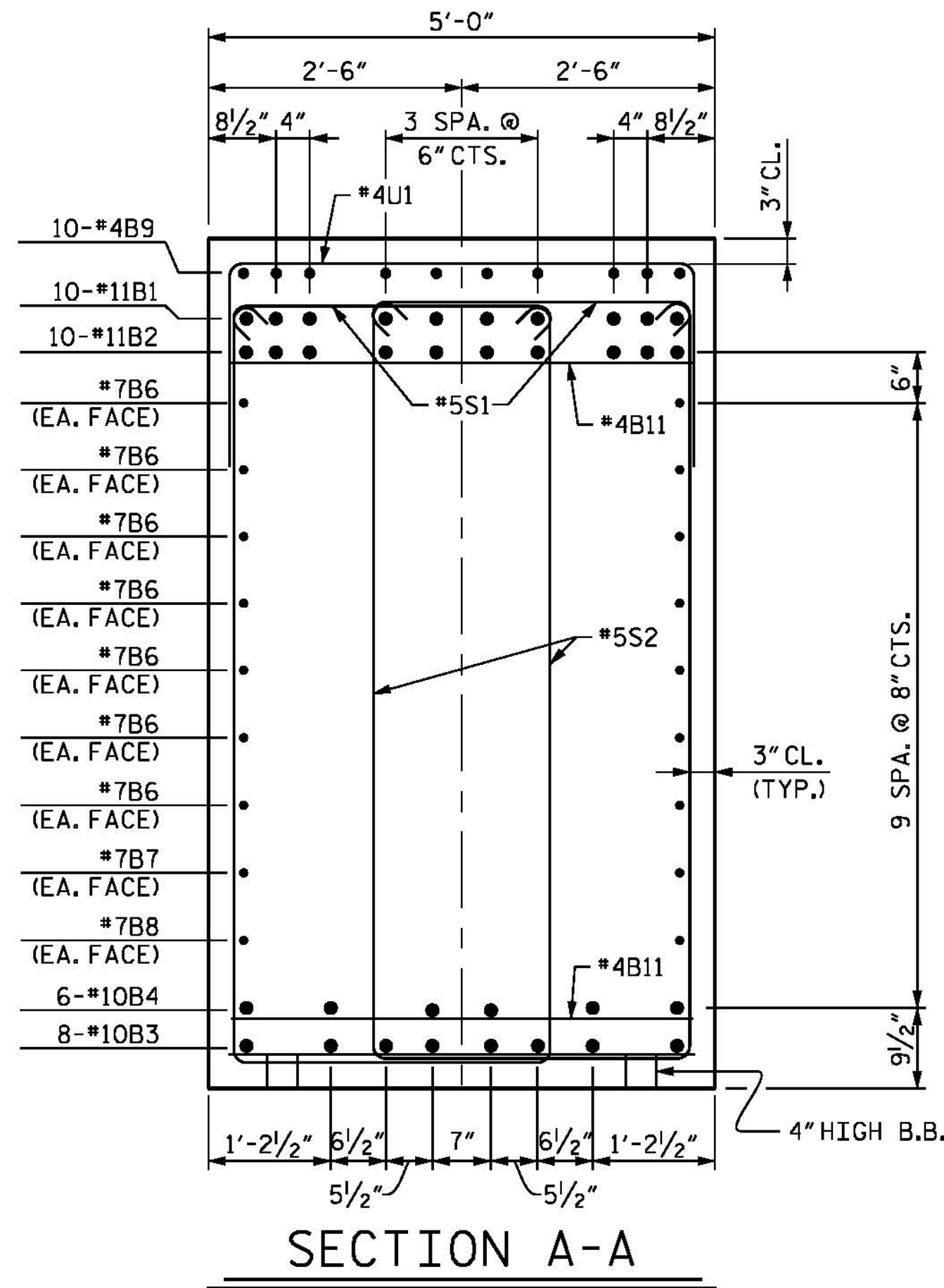
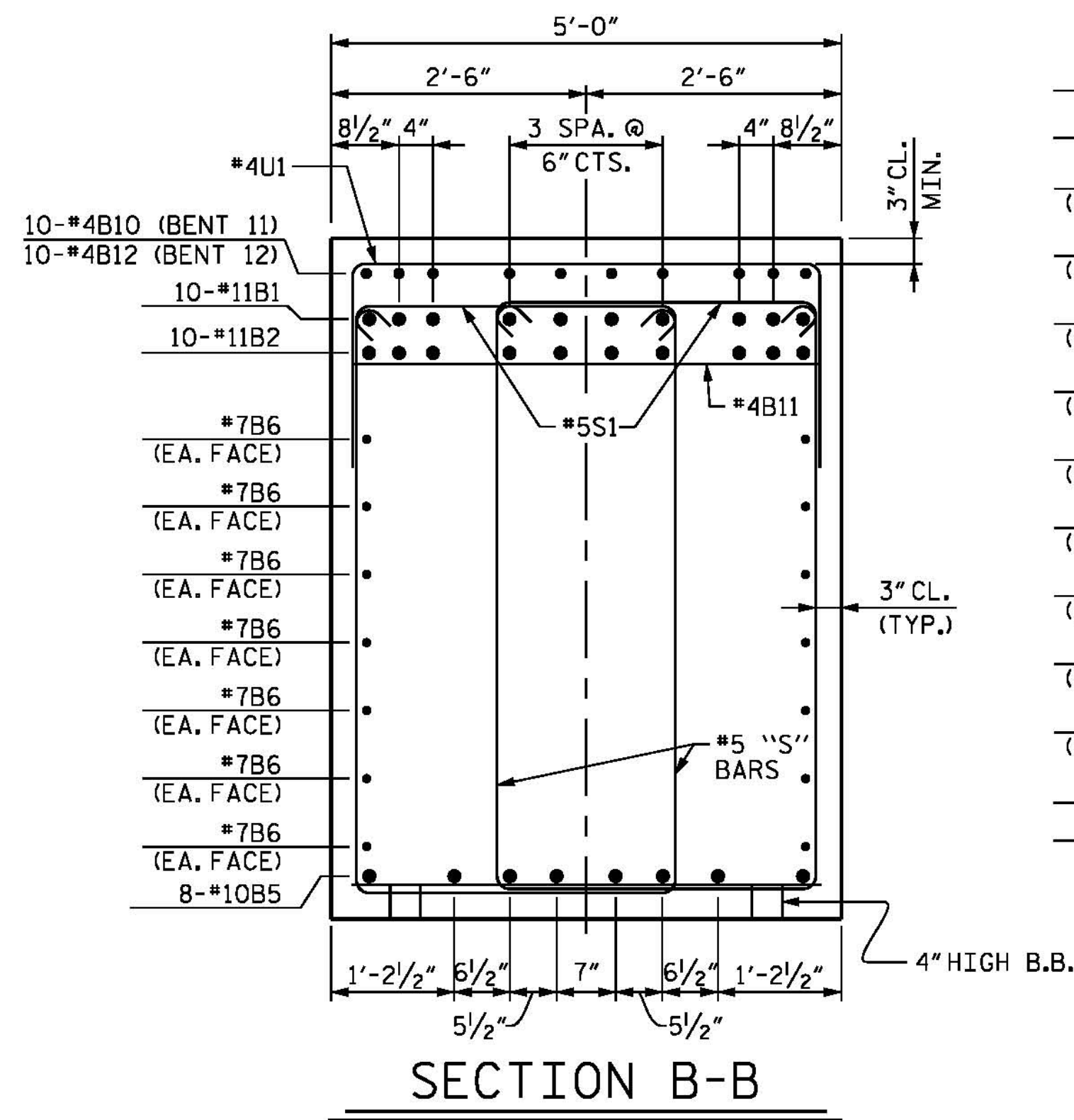


NOTES

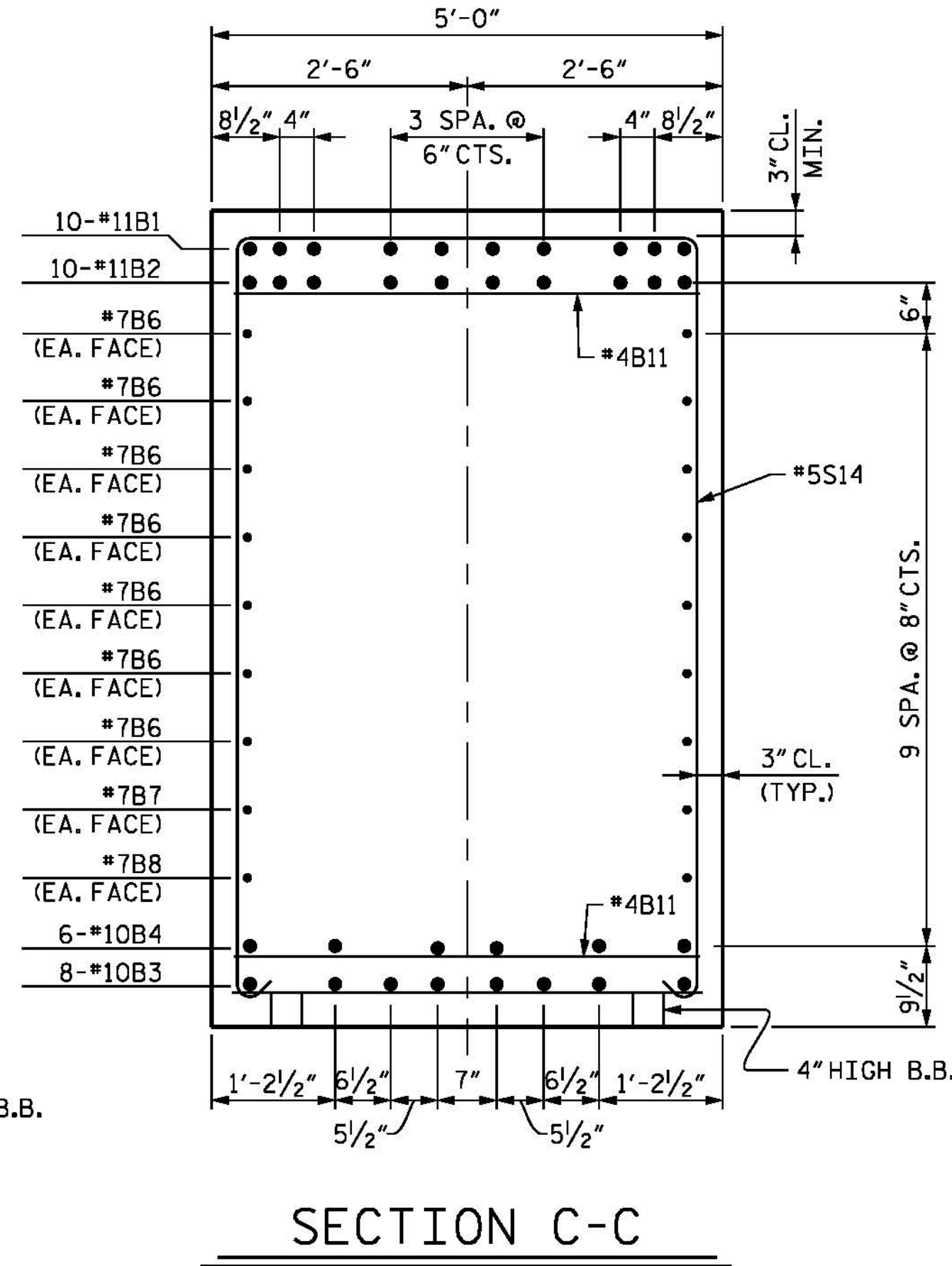
FOR NOTES, SEE SHEET 1 OF 5.



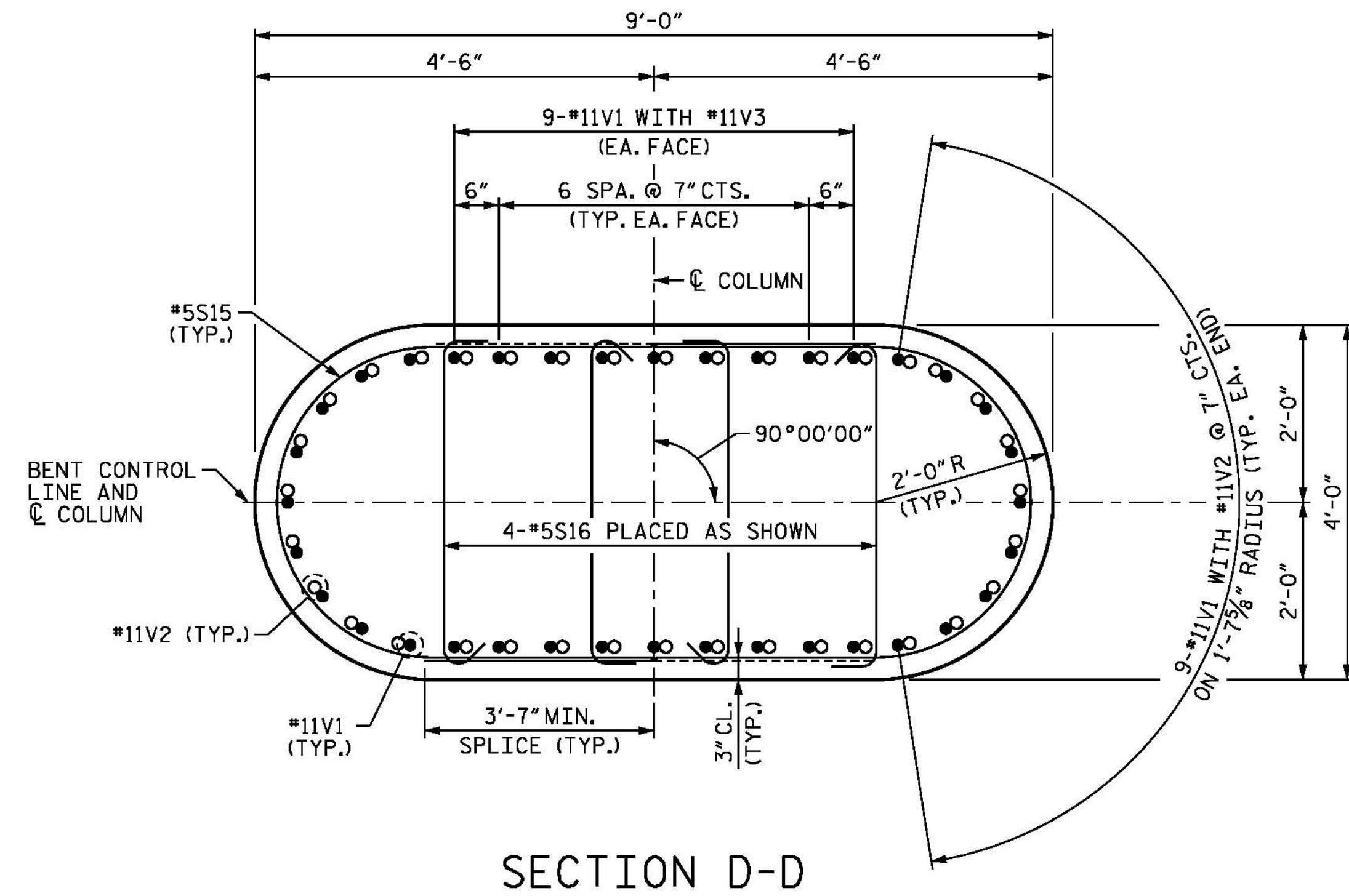
SECTION A-A



SECTION B-B



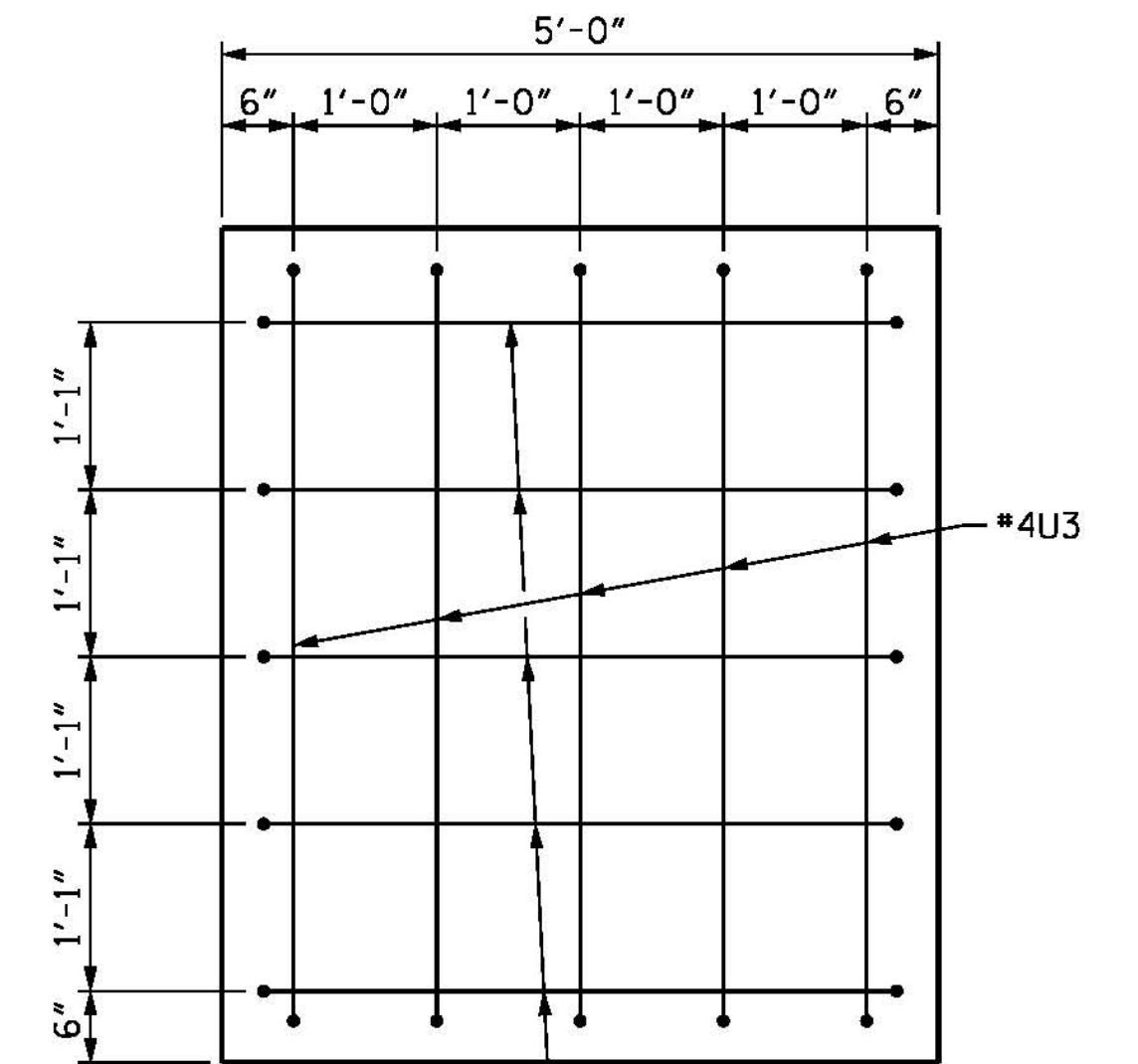
SECTION C-C



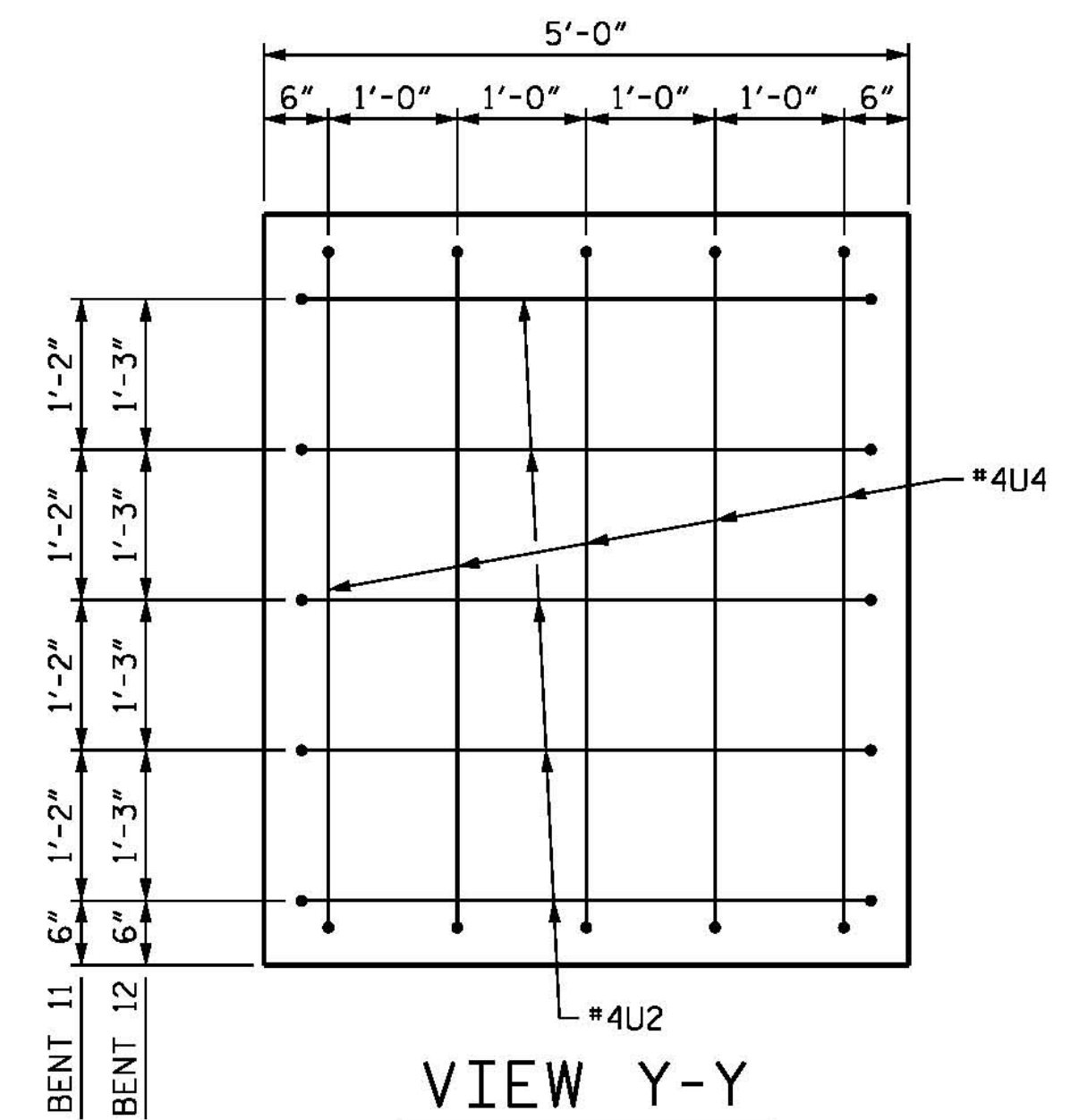
SECTION D-D

WHEN PLACING #5S16 BARS, ALTERNATE THE POSITION OF THE 135° HOOK HORIZONTALLY AND VERTICALLY.

ALTERNATE DIRECTION OF #5S15 TO STAGGER LAPS.



VIEW X-X



VIEW Y-Y

PROJECT NO. B-4929

PENDER COUNTY

STATION: 38+13.81 -L2-

SHEET 2 OF 5

STATE OF NORTH CAROLINA
DEPARTMENT OF TRANSPORTATION
RALEIGH

SUBSTRUCTURE

**BENTS 11 AND 12
SECTIONS AND DETAILS**



DocuSigned by:
Jason R Doughty
00F1C88448274F7...

**PARSONS
BRINCKERHOFF**
434 FAYETTEVILLE STREET
SUITE 1500
RALEIGH, NC 27601
LICENSE NO. F-0165

**DOCUMENT NOT CONSIDERED FINAL
UNLESS ALL SIGNATURES COMPLETED**

REVISIONS						SHEET NO.
NO.	BY:	DATE:	NO.	BY:	DATE:	S-166
1			3			TOTAL SHEETS 278
2			4			

5/10/2016 400_325_B4929_SMU_IB11_2.dgn

DESIGNED BY: E. ULLMER DATE: MAR 2016
DRAWN BY: M. HOBBS DATE: MAR 2016
CHECKED BY: B. LOFLIN DATE: MAR 2016
DESIGN ENGINEER OF RECORD: J. DOUGHTY DATE: MAY 2016