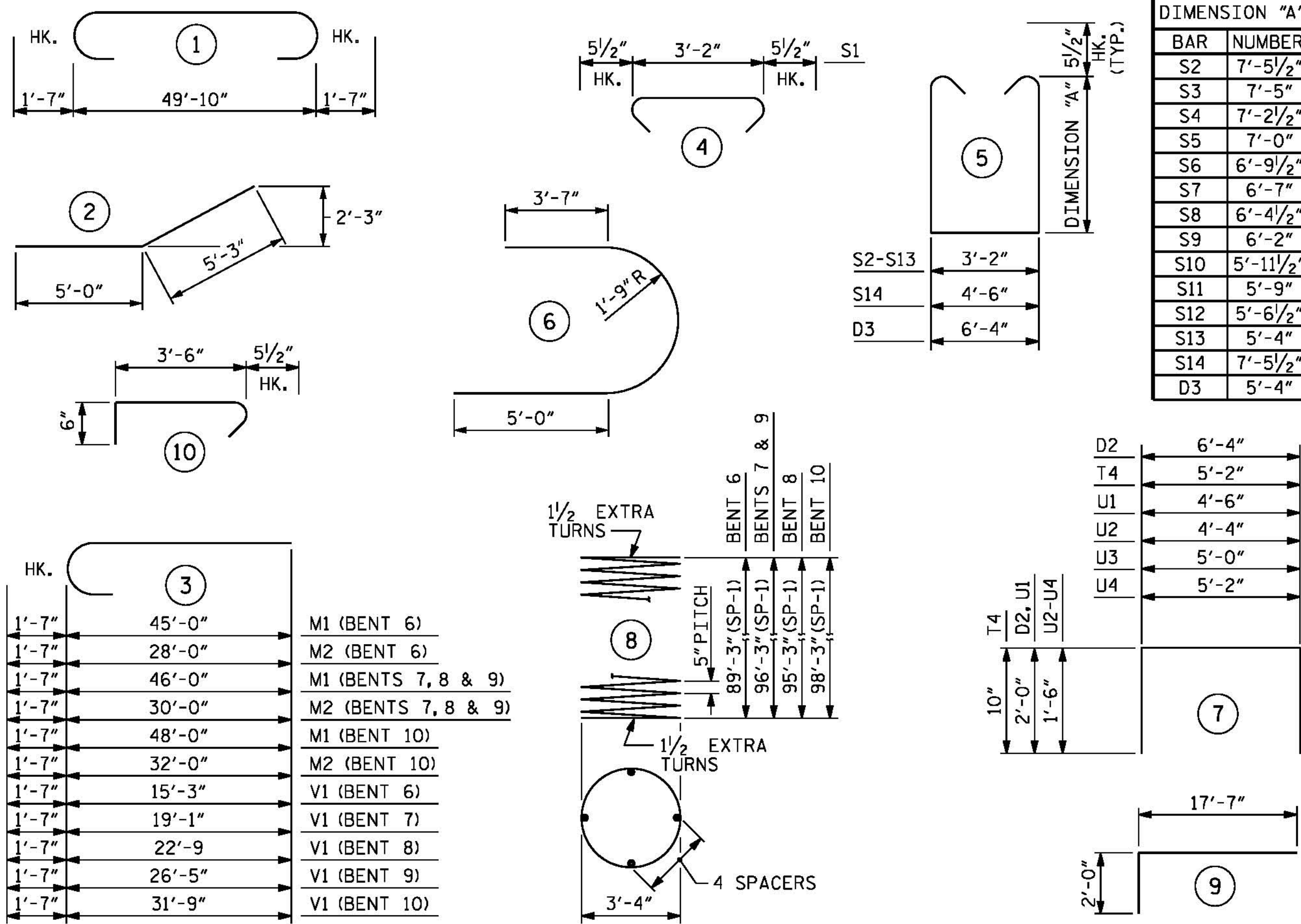


BAR TYPES



ALL BAR DIMENSIONS ARE OUT TO OUT.

BILL OF MATERIAL

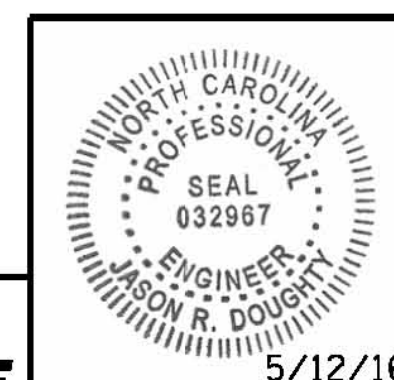
BENT 6										BENT 7													
BAR NUMBER	SIZE	TYPE	LENGTH	WEIGHT	BAR NUMBER	SIZE	TYPE	LENGTH	WEIGHT	BAR NUMBER	SIZE	TYPE	LENGTH	WEIGHT	BAR NUMBER	SIZE	TYPE	LENGTH	WEIGHT				
B1	10	*11	1	53'-0"	2816	T1	188	*9	STR	19'-4"	12358	B1	10	*11	1	53'-0"	2816	T1	188	*9	STR	19'-4"	12358
B2	10	*11	STR	49'-10"	2648	T2	136	*7	STR	19'-4"	5374	B2	10	*11	STR	49'-10"	2648	T2	136	*7	STR	19'-4"	5374
B3	8	*10	STR	40'-4"	1388	T3	72	*5	STR	19'-4"	1452	B3	8	*10	STR	40'-4"	1388	T3	72	*5	STR	19'-4"	1452
B4	6	*10	STR	42'-4"	1093	T4	312	*5	7	6'-10"	2224	B4	6	*10	STR	42'-4"	1093	T4	312	*5	7	6'-10"	2224
B5	8	*10	2	10'-4"	356	T5	110	*5	STR	7'-2"	822	B5	8	*10	2	10'-4"	356	T5	110	*5	STR	7'-2"	822
B6	14	*7	STR	49'-10"	1426							B6	14	*7	STR	49'-10"	1426						
B7	2	*7	STR	47'-8"	195	U1	66	*4	7	8'-6"	375	B7	2	*7	STR	47'-8"	195	U1	66	*4	7	8'-6"	375
B8	2	*7	STR	45'-0"	184	U2	10	*4	7	7'-4"	49	B8	2	*7	STR	45'-0"	184	U2	10	*4	7	7'-4"	49
B9	10	*4	STR	10'-11"	73	U3	5	*4	7	8'-0"	27	B9	10	*4	STR	10'-11"	73	U3	5	*4	7	8'-0"	27
B10	10	*4	STR	21'-10"	146	U4	5	*4	7	8'-2"	27	B10	10	*4	STR	21'-10"	146	U4	5	*4	7	8'-2"	27
B11	10	*4	STR	5'-5"	36							B11	10	*4	STR	5'-5"	36						
B12	24	*4	STR	4'-6"	72	V1	72	*11	3	16'-10"	6439	B12	24	*4	STR	4'-6"	72	V1	72	*11	3	20'-8"	7906
						V2	72	*11	9	19'-7"	7491							V2	72	*11	9	19'-7"	7491
D1	42	*10	STR	39'-4"	7109							D1	42	*10	STR	39'-4"	7109						
D2	76	*5	7	10'-4"	819							D2	76	*5	7	10'-4"	819						
D3	14	*5	5	17'-11"	262							D3	14	*5	5	17'-11"	262						
M1	160	*11	3	46'-7"	39600	EPOXY COATED REINFORCING STEEL				LBS. 264,513	M1	160	*11	3	47'-7"	40450	EPOXY COATED REINFORCING STEEL				LBS. 279,406		
M2	160	*11	3	29'-7"	25148							M2	160	*11	3	31'-7"	26848						
M3	480	*11	STR	45'-0"	114761	SP-1	8	*	8	2240'-10"	18697	M3	480	*11	STR	48'-0"	122412	SP-1	8	*	8	2414'-2"	20143
M4	160	*11	STR	28'-4"	24086							M4	160	*11	STR	31'-4"	26636						
S1	110	*5	4	4'-1"	468	EPOXY COATED SPIRAL DRILLED PIER REINFORCING STEEL				LBS. 18,697	S1	110	*5	4	4'-1"	468	EPOXY COATED SPIRAL DRILLED PIER REINFORCING STEEL				LBS. 20,143		
S2	66	*5	5	19'-0"	1308	CLASS "AA" CONCRETE BREAKDOWN					S2	66	*5	5	19'-0"	1308	CLASS "AA" CONCRETE BREAKDOWN						
S3	4	*5	5	18'-11"	79	POUR #2 - FOOTING	C.Y.	179.8			S3	4	*5	5	18'-11"	79	POUR #2 - FOOTING	C.Y.	179.8				
S4	4	*5	5	18'-6"	77	POUR #3 - STRUT	C.Y.	62.7			S4	4	*5	5	18'-6"	77	POUR #3 - STRUT	C.Y.	62.7				
S5	4	*5	5	18'-1"	75	POUR #4 - COLUMNS	C.Y.	17.1			S5	4	*5	5	18'-1"	75	POUR #4 - COLUMNS	C.Y.	17.1				
S6	4	*5	5	17'-8"	74	POUR #5 - CAP	C.Y.	74.7			S6	4	*5	5	17'-8"	74	POUR #5 - CAP	C.Y.	74.7				
S7	4	*5	5	17'-3"	72	CLASS "AA" CONCRETE	C.Y.	334.3			S7	4	*5	5	17'-3"	72	CLASS "AA" CONCRETE	C.Y.	334.3				
S8	4	*5	5	16'-10"	70	4'-0" Ø DRILLED PIERS QUANTITIES:					S8	4	*5	5	16'-10"	70	4'-0" Ø DRILLED PIERS QUANTITIES:						
S9	4	*5	5	16'-5"	68	DRILLED PIER	LIN. FT.	717.9			S9	4	*5	5	16'-5"	68	DRILLED PIER	LIN. FT.	717.9				
S10	4	*5	5	16'-0"	67	POUR 1 - DRILLED PIER	C.Y.	334.1			S10	4	*5	5	16'-0"	67	POUR 1 - DRILLED PIER	C.Y.	334.1				
S11	4	*5	5	15'-7"	65	PERMANENT STEEL CASING FOR 4'-0" Ø DRILLED PIERS	LIN. FT.	197.9			S11	4	*5	5	15'-7"	65	PERMANENT STEEL CASING FOR 4'-0" Ø DRILLED PIERS	LIN. FT.	197.9				
S12	4	*5	5	15'-2"	63	CSL TUBES	LIN. FT.	2919.7			S12	4	*5	5	15'-2"	63	CSL TUBES	LIN. FT.	2919.7				
S13	4	*5	5	14'-9"	62						S13	4	*5	5	14'-9"	62							
S14	24	*5	5	20'-4"	509						S14	24	*5	5	20'-4"	509							
S15	108	*5	6	14'-1"	1586						S15	108	*5	6	14'-1"	1586							
S16	216	*5	10	4'-6"	1014						S16	216	*5	10	4'-6"	1014							

* THE SP-1 SPIRAL REINFORCING STEEL SHALL BE W31 OR D-20 OR D-31 COLD DRAWN WIRE OR #5 PLAIN DEFORMED BAR.

NOTES:
FOR NOTES, SEE SHEET 1 OF 5.

PROJECT NO. B-4929
PENDER COUNTY
STATION: 38+13.81 -L2-
SHEET 4 OF 5

STATE OF NORTH CAROLINA
DEPARTMENT OF TRANSPORTATION
RALEIGH
SUBSTRUCTURE
BENTS 6 THROUGH 10
BILL OF MATERIALS

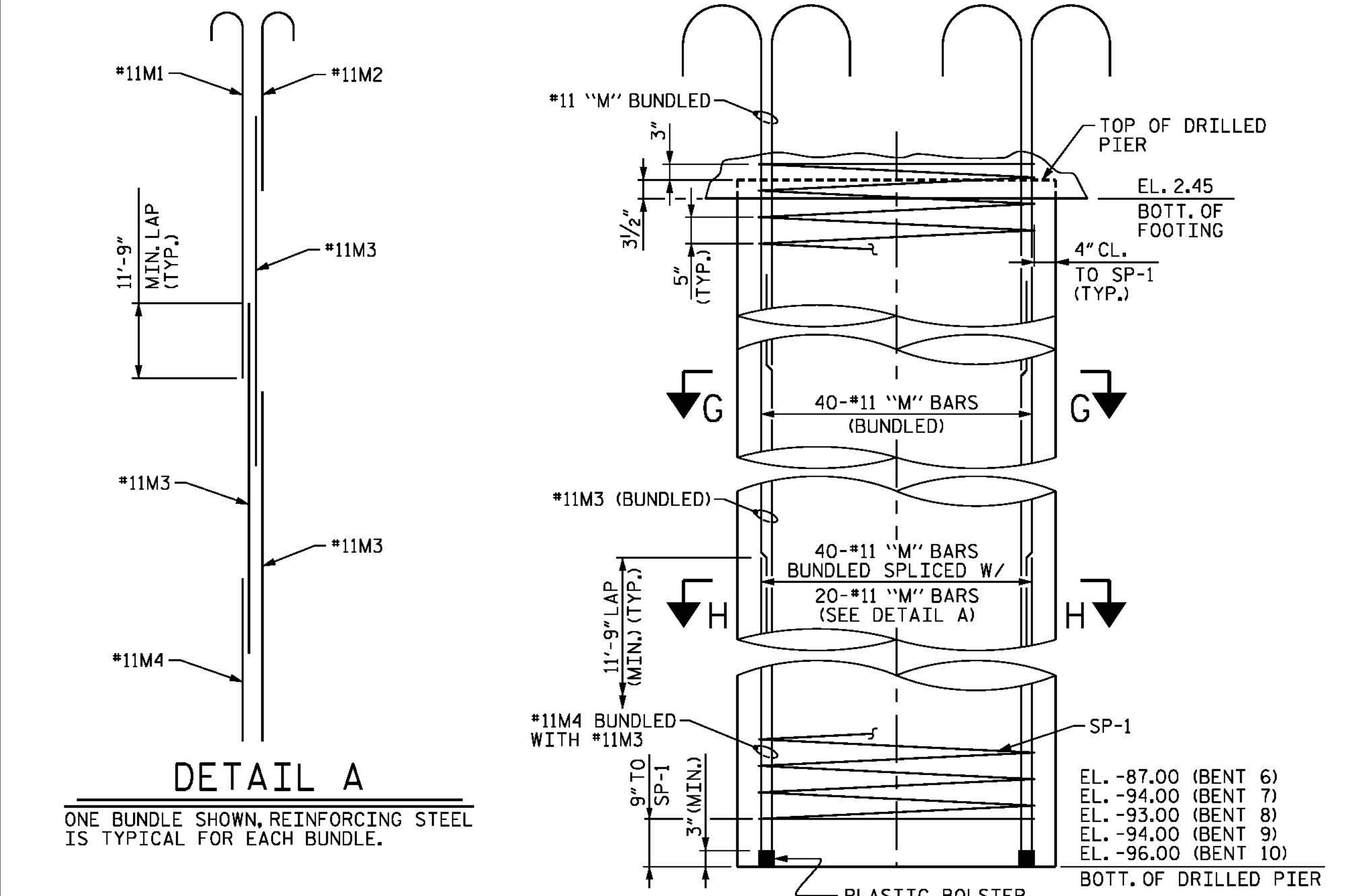


PARSONS BRINCKERHOFF
434 FAYETTEVILLE STREET
SUITE 1500
RALEIGH, NC 27601
LICENSE NO. F-0165

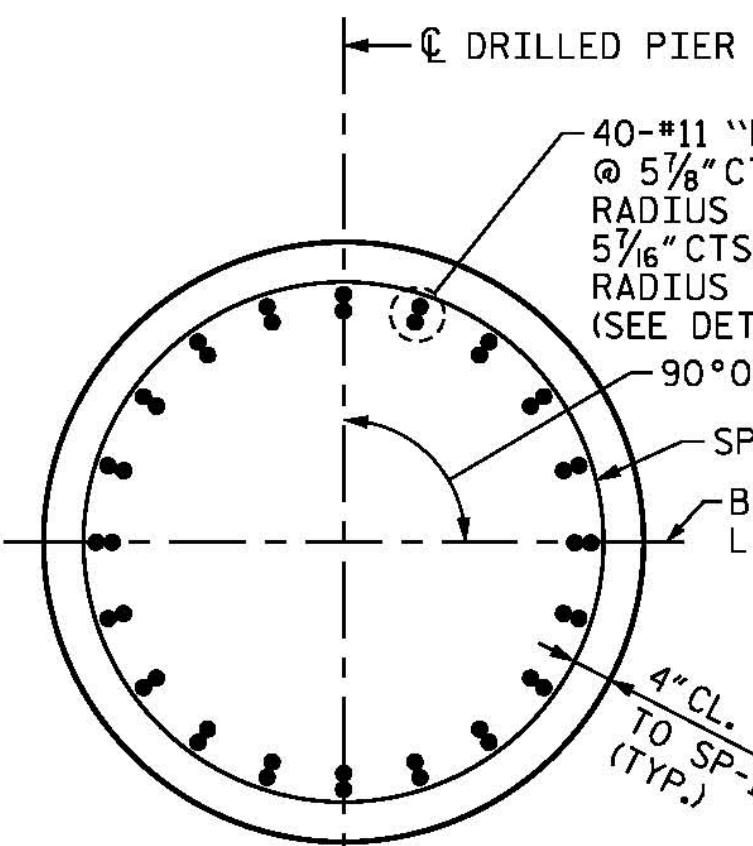
DocuSigned by:
Jason R. Doughty
00F1C96448274F7

REVISIONS		SHEET NO.	
NO.	DATE	NO.	DATE
1		3	
2		4	

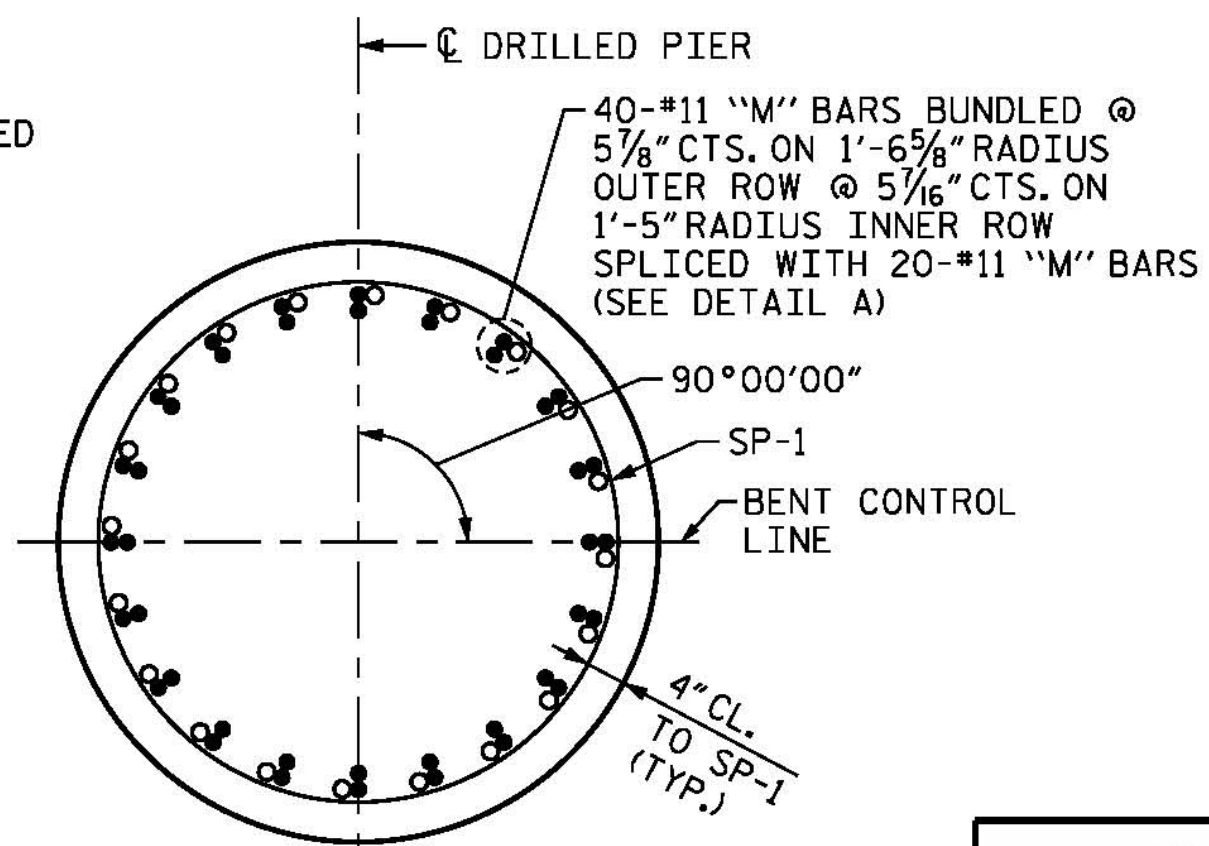
DOCUMENT NOT CONSIDERED FINAL
UNLESS ALL SIGNATURES COMPLETED



DRILLED PIER ELEVATION



SECTION G-G



SECTION H-H

5/10/2016 400_319_B4929_SMU_IB6_4.dgn

DESIGNED BY: J. BORUTA DATE: MAR 2016
DRAWN BY: K. WHITE DATE: MAR 2016
CHECKED BY: J. DOUGHTY DATE: MAR 2016
DESIGN ENGINEER OF RECORD: J. DOUGHTY DATE: MAY 2016

TOTAL SHEETS: 278