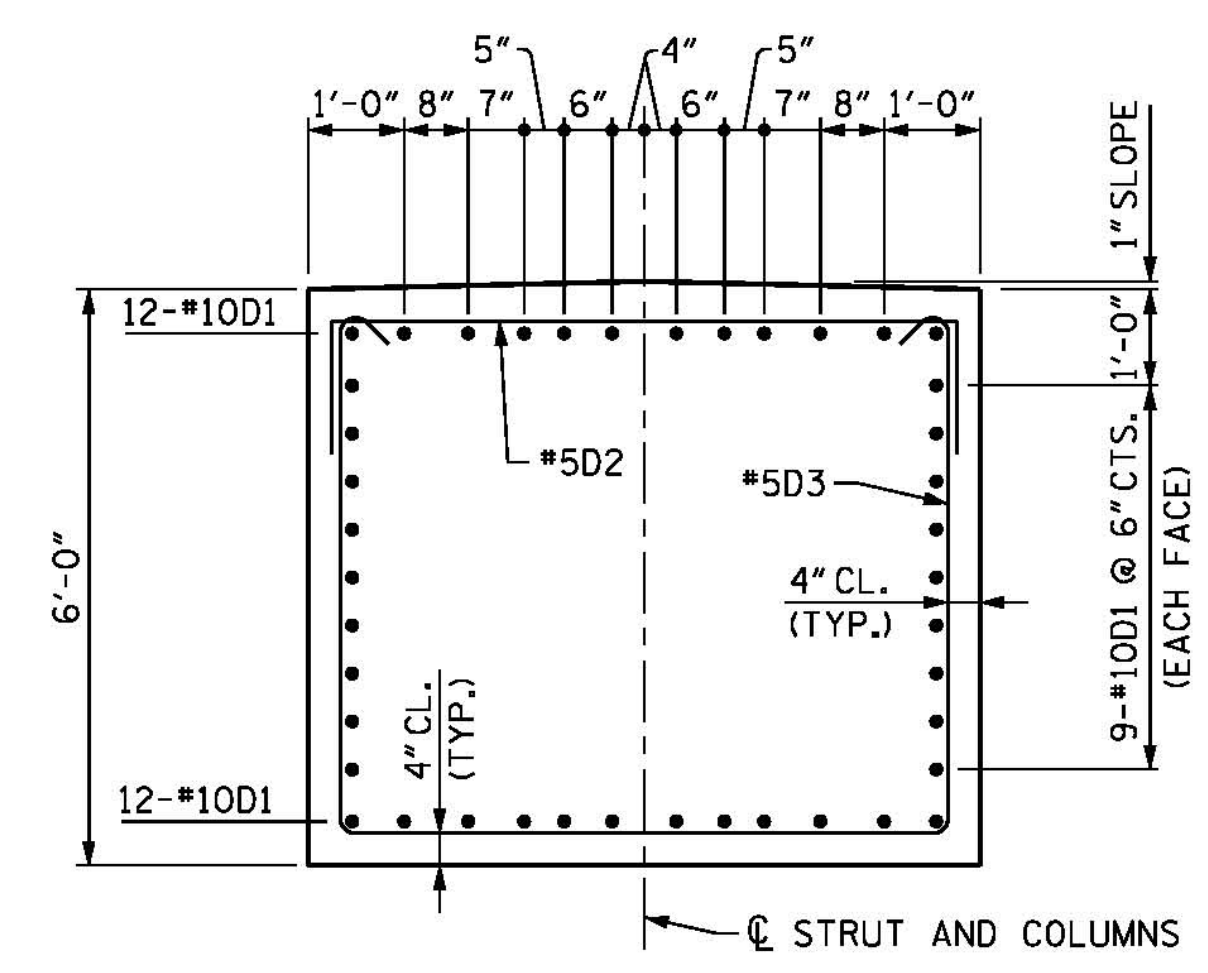


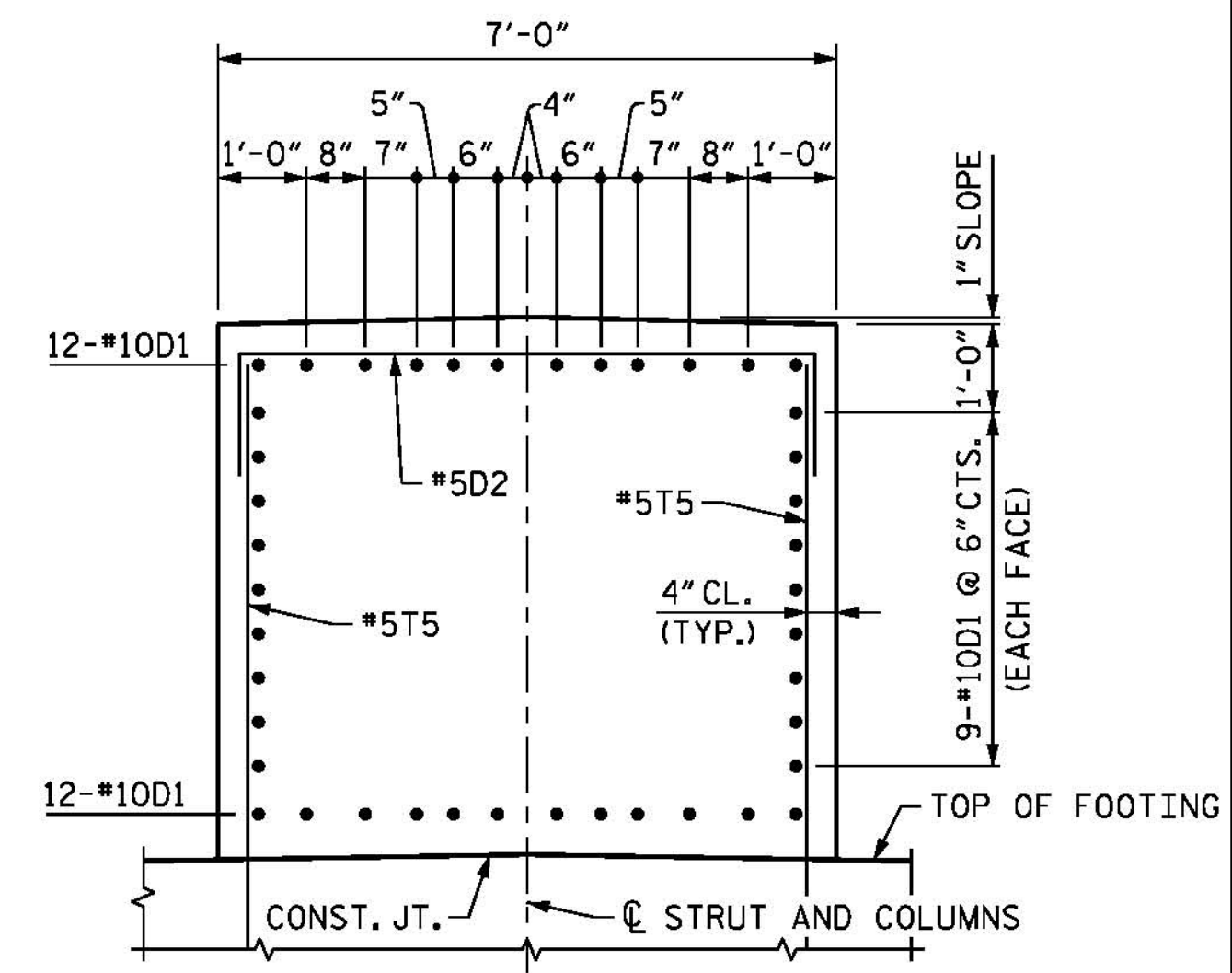
FOOTING PLAN

ALL DIMENSIONS AND DETAILS SHOWN FOR FOOTINGS ARE TYPICAL FOR EACH FOOTING UNLESS OTHERWISE NOTED.



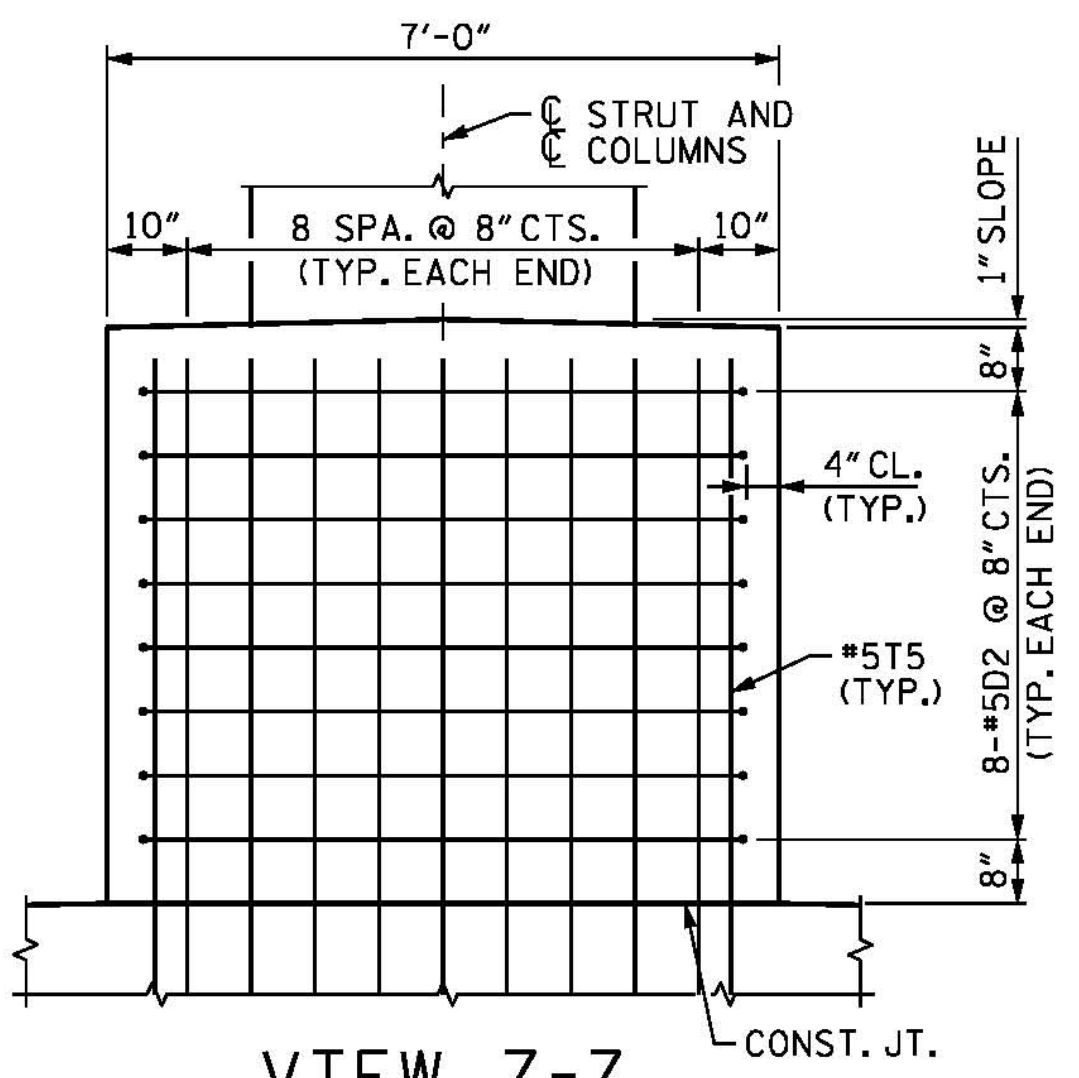
SECTION E-E

BARs MAY BE SHIFTED SLIGHTLY, AS NECESSARY, TO CLEAR COLUMN REINFORCING.



SECTION F-F

BARs MAY BE SHIFTED SLIGHTLY, AS NECESSARY, TO CLEAR COLUMN REINFORCING.

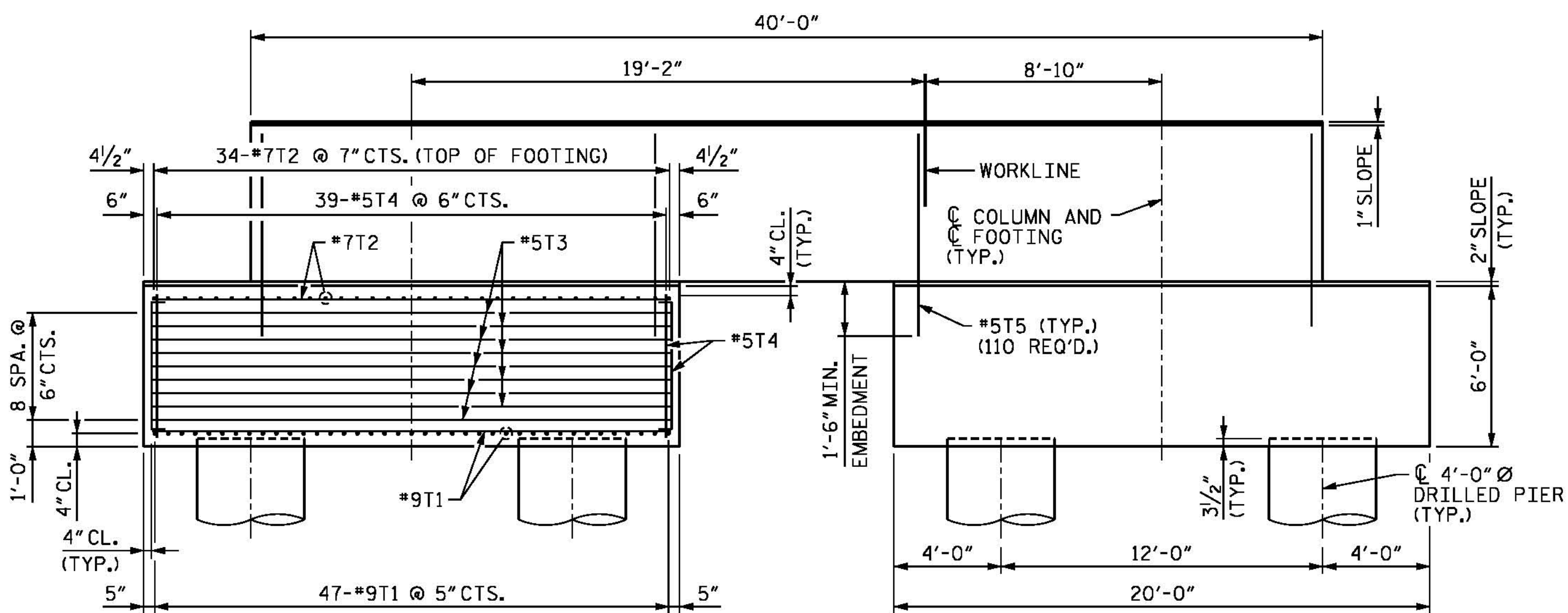


VIEW Z-Z

NOTES:

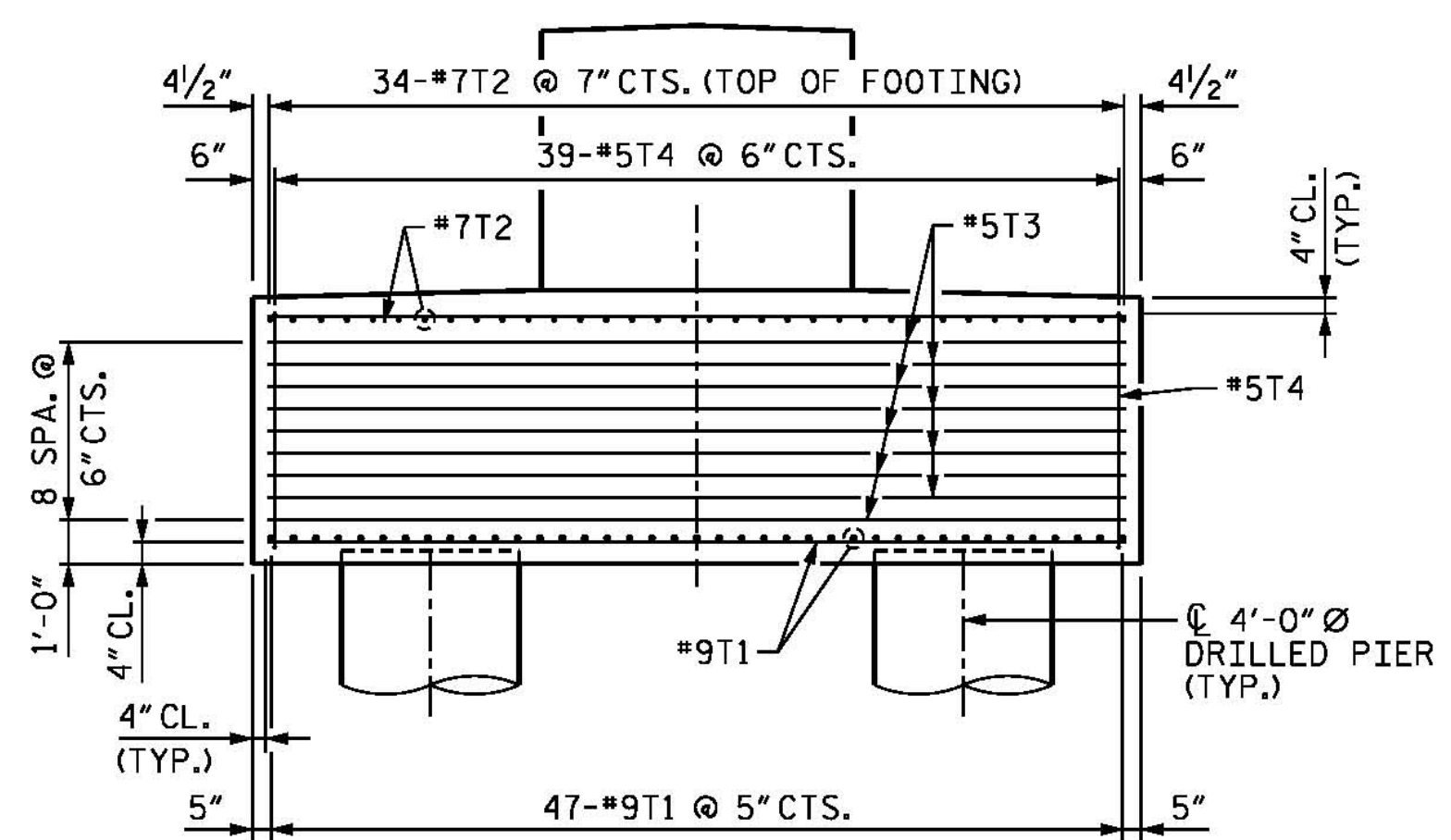
FOR NOTES, SEE SHEET 1 OF 5.

PROJECT NO. B-4929
PENDER COUNTY
 STATION: 38+13.81 -L2-
 SHEET 3 OF 5

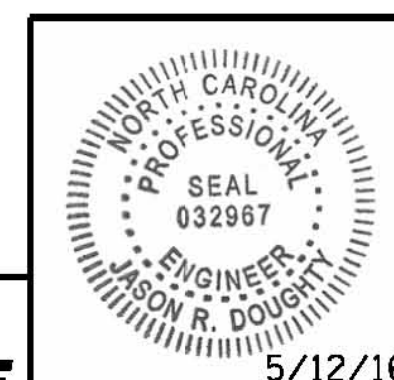


ELEVATION

ALL DIMENSIONS AND DETAILS SHOWN FOR FOOTINGS ARE TYPICAL FOR EACH FOOTING UNLESS OTHERWISE NOTED.



SIDE ELEVATION



5/12/16
 Jason R. Doughty

PARSONS BRINCKERHOFF
 434 FAYETTEVILLE STREET
 SUITE 1500
 RALEIGH, NC 27601
 LICENSE NO. F-0165

DOCUMENT NOT CONSIDERED FINAL UNLESS ALL SIGNATURES COMPLETED

STATE OF NORTH CAROLINA
 DEPARTMENT OF TRANSPORTATION
 RALEIGH
 SUBSTRUCTURE
 BENTS 6 THROUGH 10
 FOOTING DETAILS

| REVISIONS | | | | | | SHEET NO. |
|-----------|-----|-------|-----|-----|-------|--------------|
| NO. | BY: | DATE: | NO. | BY: | DATE: | S-162 |
| 1 | | | 3 | | | TOTAL SHEETS |
| 2 | | | 4 | | | 278 |

5/10/2016 400_317_B4929_SMU_IB6_3.dgn

| | | | |
|----------------------------|------------|-------|----------|
| DESIGNED BY: | J. BORUTA | DATE: | MAR 2016 |
| DRAWN BY: | MAH/KEW | DATE: | MAR 2016 |
| CHECKED BY: | J. DOUGHTY | DATE: | MAR 2016 |
| DESIGN ENGINEER OF RECORD: | J. DOUGHTY | DATE: | MAY 2016 |