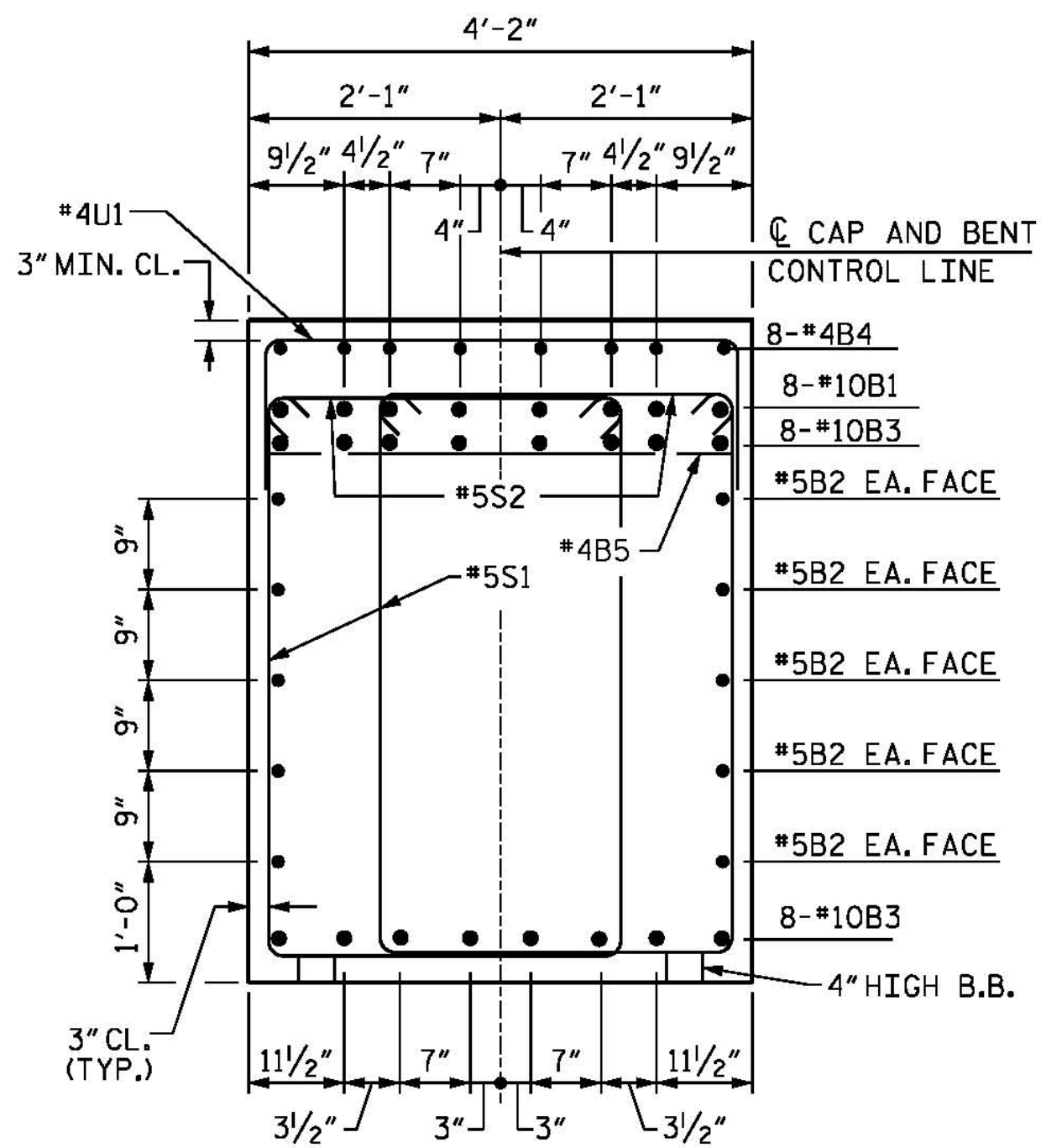
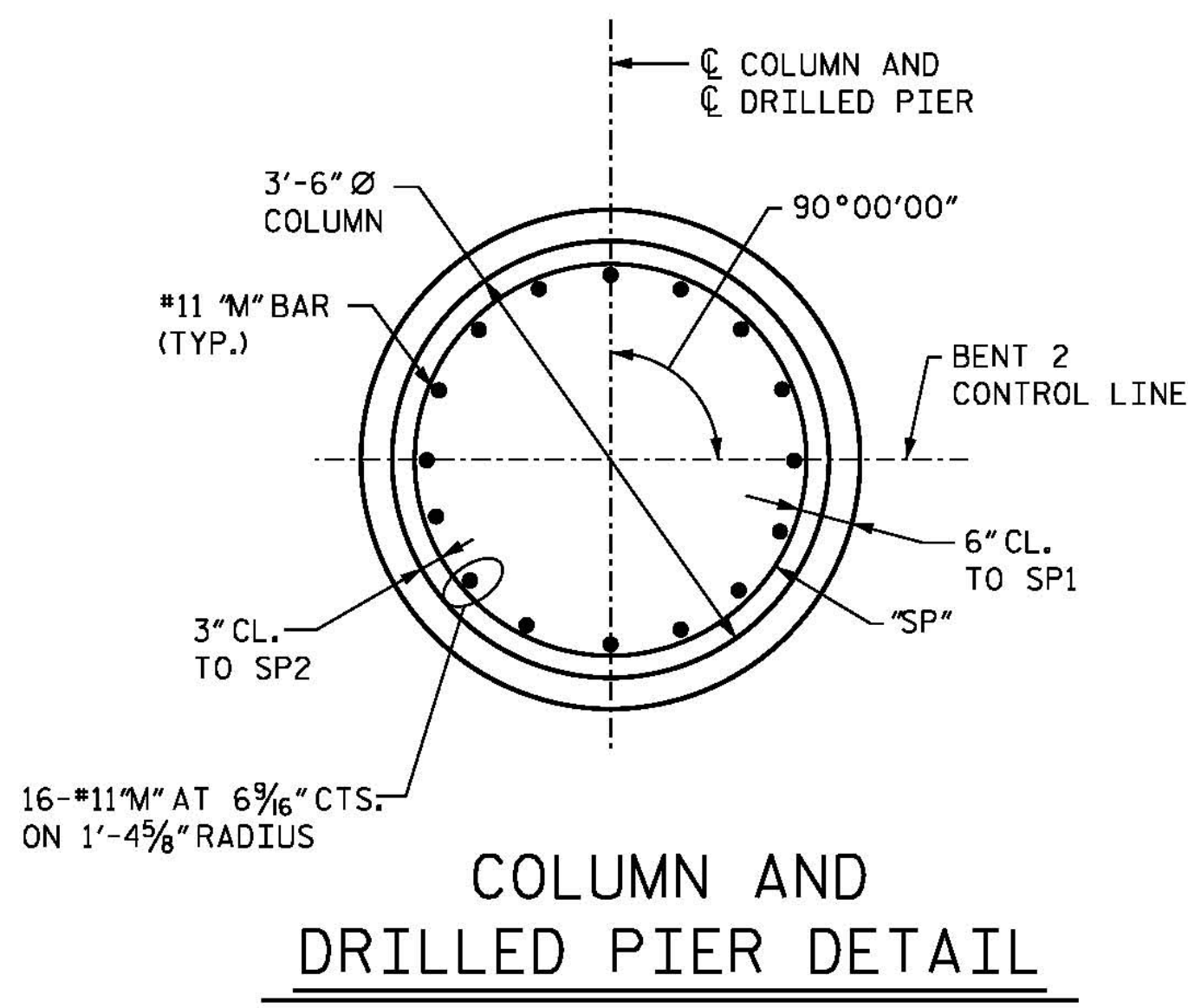


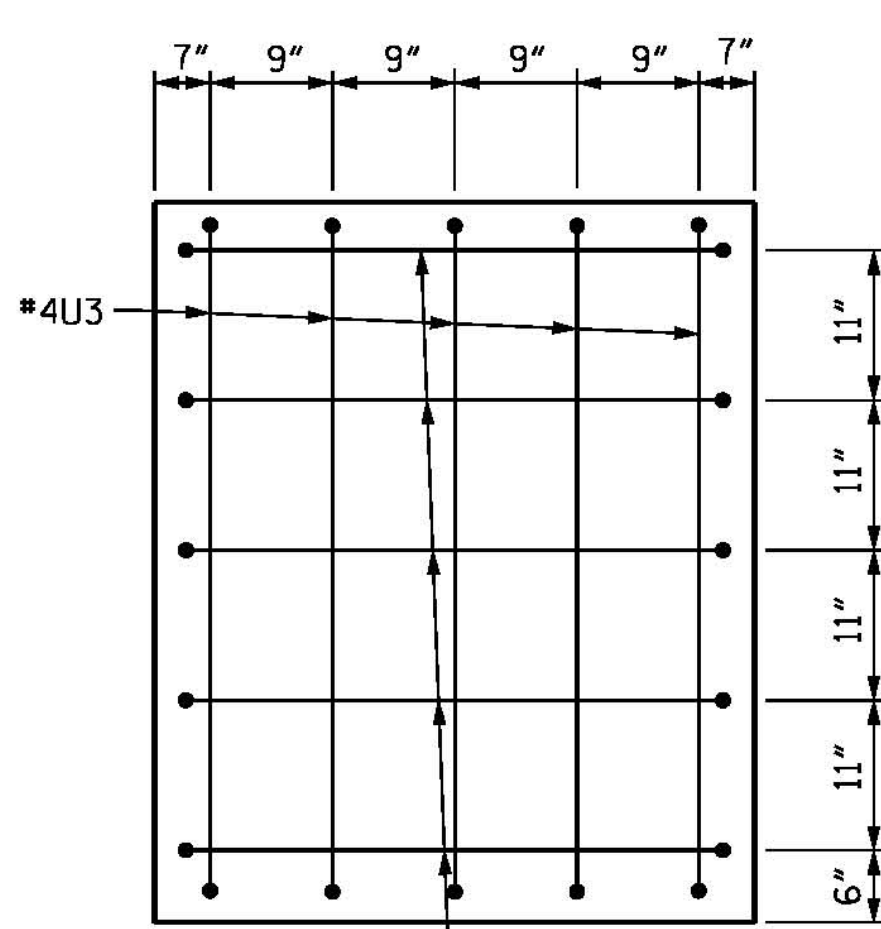
SECTION A-A



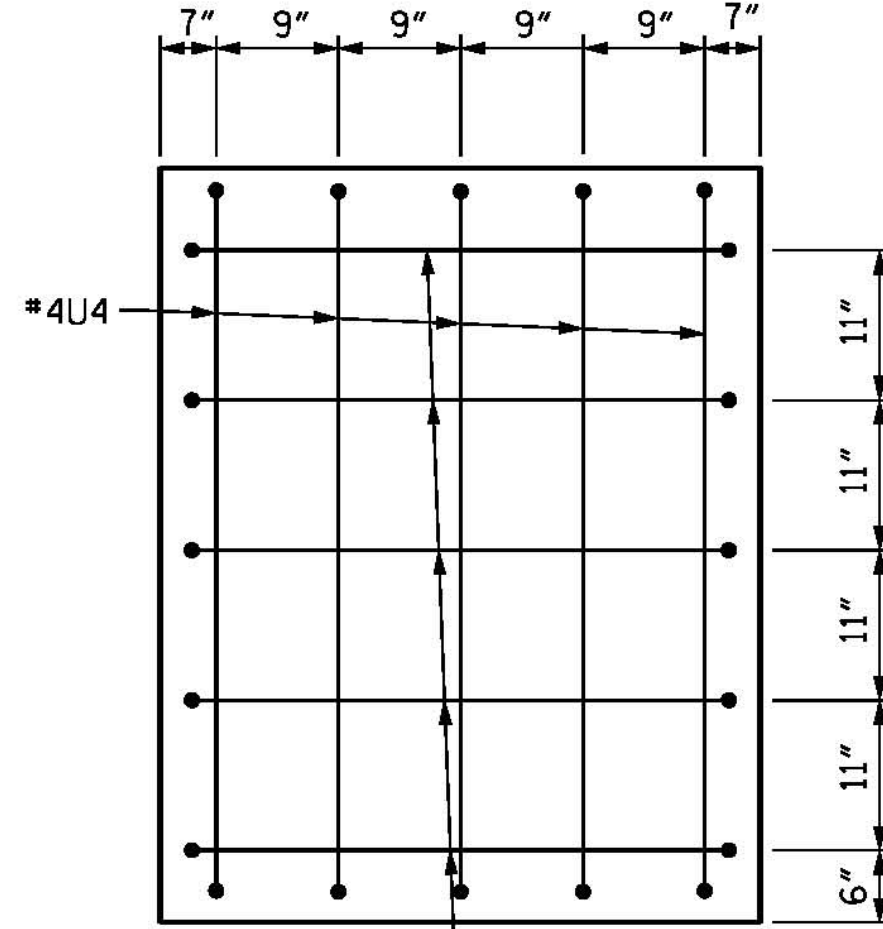
SECTION B-B



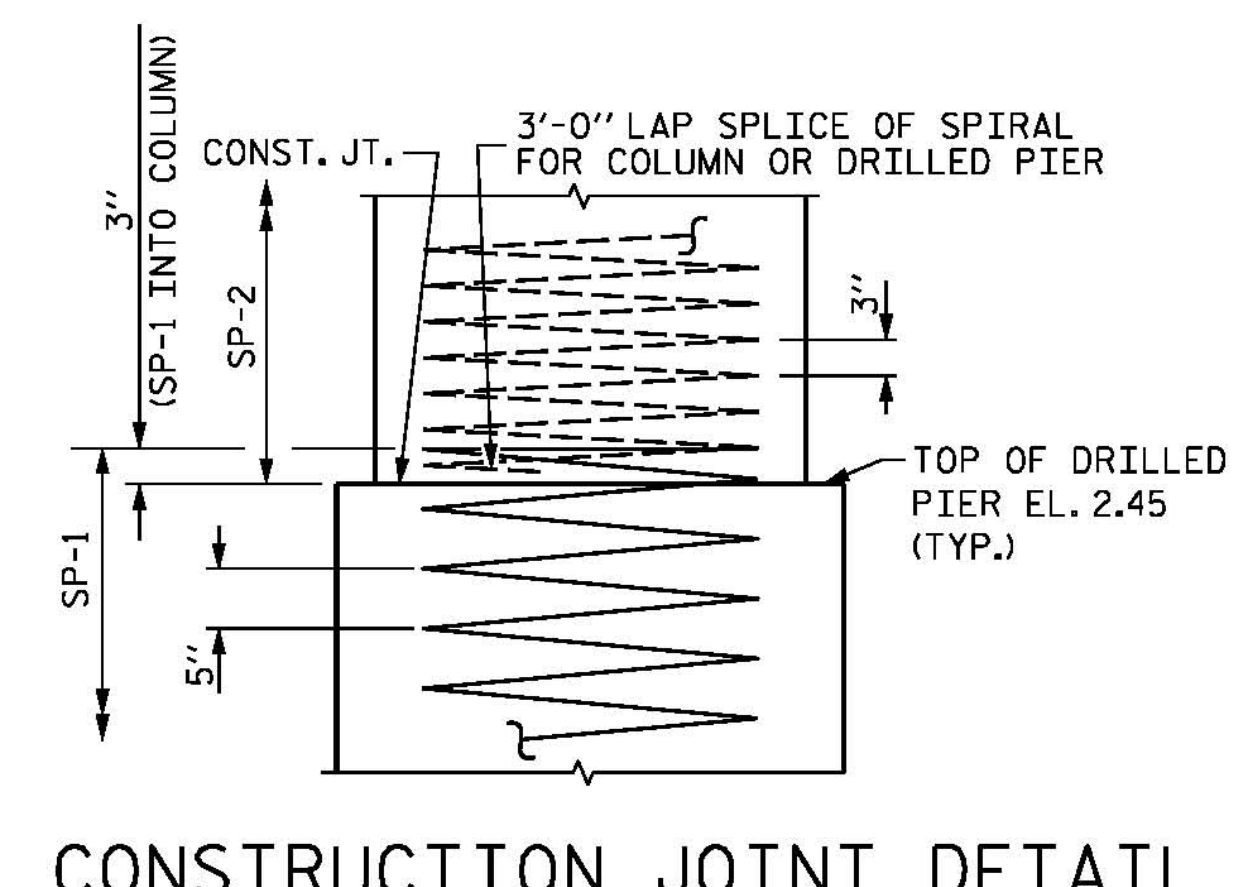
COLUMN AND DRILLED PIER DETAIL



VIEW X-X

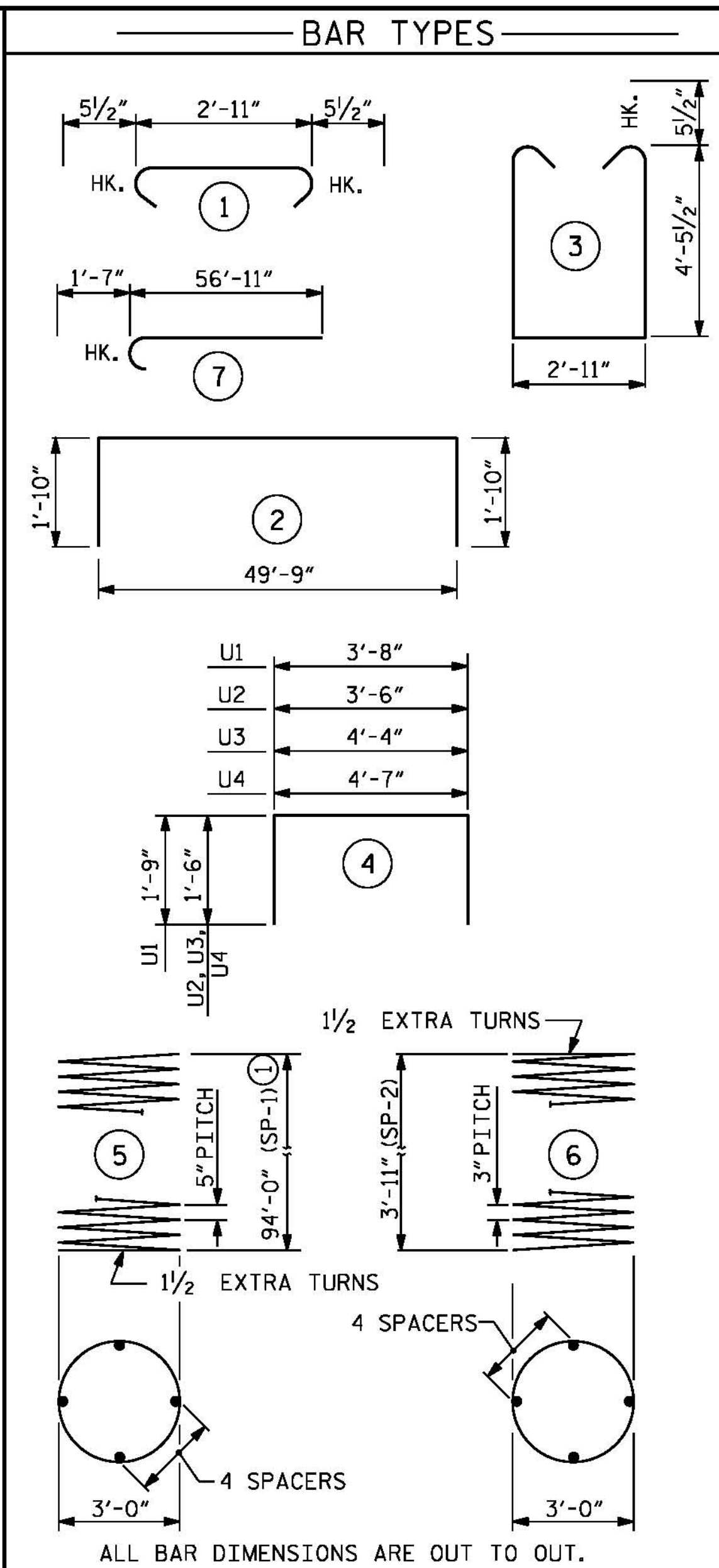


VIEW Y-Y



CONSTRUCTION JOINT DETAIL

*M BARS NOT SHOWN FOR CLARITY



BILL OF MATERIAL						
BENT 2						
BAR	NUMBER	SIZE	TYPE	LENGTH	WEIGHT	
B1	8	#10		53'-5"	1839	
B2	10	#5	STR	49'-6"	516	
B3	16	#10	STR	49'-6"	3408	
B4	16	#4	STR	20'-7"	220	
B5	13	#4	STR	3'-8"	32	
M1	48	#11		58'-6"	14,919	
M2	48	#11	STR	56'-11"	14,515	
S1	196	#5		12'-9"	2606	
S2	196	#5		3'-10"	784	
U1	47	#4		7'-2"	225	
U2	10	#4		6'-6"	45	
U3	5	#4		7'-4"	24	
U4	5	#4		7'-7"	25	
EPOXY COATED REINFORCING STEEL				LBS.	39,158	
SP1	3	*	5	2113'-9"	6614	
SP2	3	**	6	167'-5"	336	
EPOXY COATED SPIRAL COLUMN REINFORCING STEEL				LBS.	6950	
CLASS "AA" CONCRETE BREAKDOWN						
POUR #2 - COLUMNS					3.9 C.Y.	
POUR #3 - CAP					40.8 C.Y.	
CLASS "AA" CONCRETE					44.7 C.Y.	
DRILLED PIER QUANTITIES						
POUR #1 - DRILLED PIER CONCRETE					131.9 C.Y.	
4'-0" Ø DRILLED PIERS					283.4 L.F.	
PERMANENT STEEL CASING FOR 4'-0" Ø DRILLED PIERS					76.4 L.F.	
SPT TESTING					1 EA.	
SID INSPECTIONS					1 EA.	
CSL TUBES					1152 L.F.	

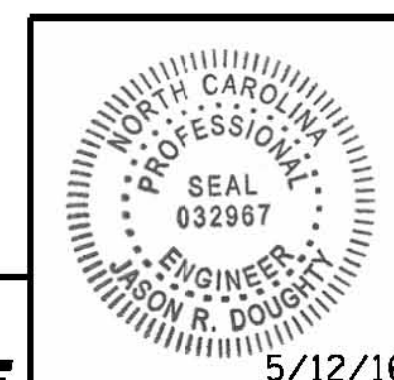
** THE SP-2 EPOXY COATED SPIRAL REINFORCING STEEL SHALL BE W20 OR D-20 COLD DRAWN WIRE OR #4 PLAIN OR DEFORMED BAR.

* THE SP-1 EPOXY COATED SPIRAL REINFORCING STEEL SHALL BE W31 OR D-31 COLD DRAWN WIRE OR #5 PLAIN OR DEFORMED BAR,

① CONTRACTOR MAY PROVIDE 3'-0" MIN. SPLICE AT MID HEIGHT OF EPOXY COATED SPIRAL REINFORCING STEEL. NO ADDITIONAL PAYMENT WILL BE PROVIDED FOR SPLICES.

PROJECT NO. B-4929
PENDER COUNTY
 STATION: 38+13.81 -L2-
 SHEET 2 OF 2

STATE OF NORTH CAROLINA
 DEPARTMENT OF TRANSPORTATION
 RALEIGH
 SUBSTRUCTURE
 BENT 2
 SECTIONS AND DETAILS



PARSONS BRINCKERHOFF
 434 FAYETTEVILLE STREET
 SUITE 1500
 RALEIGH, NC 27601
 LICENSE NO. F-0165

DocuSigned by:
 Jason R Doughty
 00F1C96448274F7...
 5/12/16

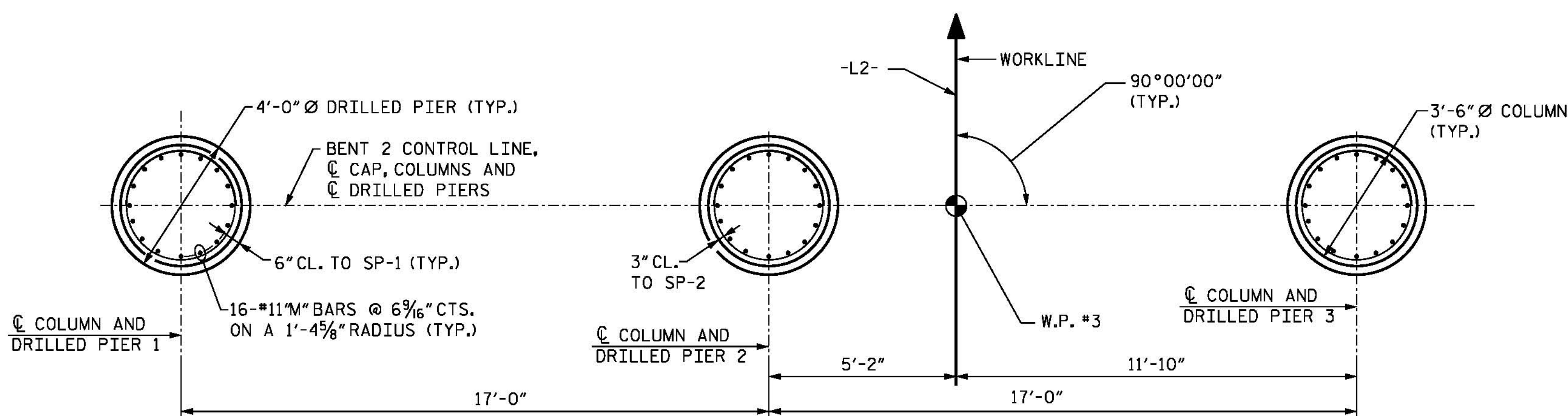
REVISIONS					
NO.	BY:	DATE:	NO.	BY:	DATE:
1			3		
2			4		

DOCUMENT NOT CONSIDERED FINAL UNLESS ALL SIGNATURES COMPLETED

SHEET NO. **S-155**
 TOTAL SHEETS 278

PLAN OF COLUMNS AND DRILLED PIERS

(REINFORCING STEEL ARE TYPICAL FOR EACH COLUMN AND DRILLED PIER)



5/10/2016 400_303_B4929_SMU_IB22.dgn

DESIGNED BY: MJW/AMD DATE: JAN. 2016
 DRAWN BY: B. CALDWELL DATE: FEB. 2016
 CHECKED BY: J. SHERMAN DATE: MAR. 2016
 DESIGN ENGINEER OF RECORD: J. DOUGHTY DATE: MAY 2016