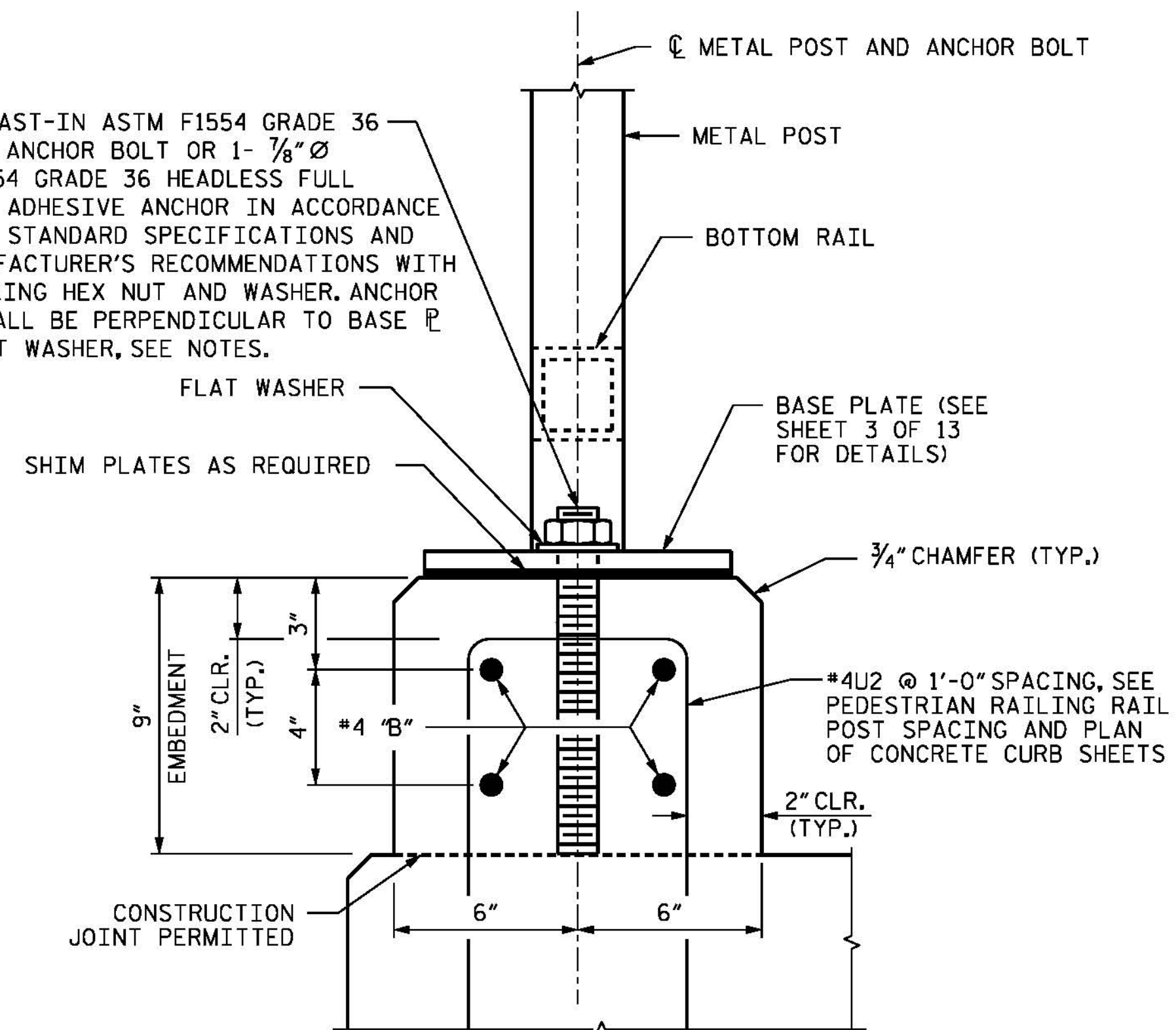


CONCRETE CURB TYPICAL SECTION

(ELEVATION ON BRIDGE DECK IS SHOWN.
FOR ELEVATION ON APPROACH SLAB, SEE APPROACH SLAB
DETAILS SHEET.)

1- 7/8" Ø CAST-IN ASTM F1554 GRADE 36
HEX HEAD ANCHOR BOLT OR 1- 7/8" Ø
ASTM F1554 GRADE 36 HEADLESS FULL
THREADED ADHESIVE ANCHOR IN ACCORDANCE
WITH THE STANDARD SPECIFICATIONS AND
THE MANUFACTURER'S RECOMMENDATIONS WITH
SELF-LOCKING HEX NUT AND WASHER. ANCHOR
BOLTS SHALL BE PERPENDICULAR TO BASE PLATE
WITH FLAT WASHER, SEE NOTES.



DETAIL F

(ADHESIVE ANCHOR BOLTS SHOWN,
CAST-IN-PLACE ANCHOR BOLT SIMILAR)

NOTES

FOR LAYOUT OF CONCRETE CURB AND REINFORCEMENT, SEE
PEDESTRIAN RAILING RAIL POST SPACING AND PLAN OF
CONCRETE CURB SHEETS.

ANCHOR BOLT NUTS SHALL BE TIGHTENED ONE-HALF TURN
WITH A WRENCH FROM A FINGER-TIGHT POSITION.

THE CONTRACTOR MAY USE ADHESIVELY ANCHORED ANCHOR
BOLTS IN LIEU OF THE CAST-IN ANCHOR BOLTS. LEVEL
ONE FIELD TESTING IS REQUIRED, AND THE YIELD LOAD
OF THE 7/8" Ø ANCHOR BOLT IS 21.6 KIPS. FOR ADHESIVELY
ANCHORED ANCHOR BOLTS OR DOWELS, SEE THE STANDARD
SPECIFICATIONS.

IF CONTRACTOR ELECTS TO USE ADHESIVELY ANCHORED ANCHOR
BOLTS AS SHOWN IN DETAIL F, THE ADHESIVE MATERIAL SHALL
SATISFY THE NCDOT STANDARD SPECIFICATIONS AND SHALL
HAVE MINIMUM CHARACTERISTIC BOND STRENGTH, 7cr OF 1000 PSI.

FOR PEDESTRIAN HANDRAIL MOUNTED ON RETAINING WALL COPING,
SEE END BENT DETAILS SHEETS.

**BILL OF MATERIAL
(CONCRETE CURB)**

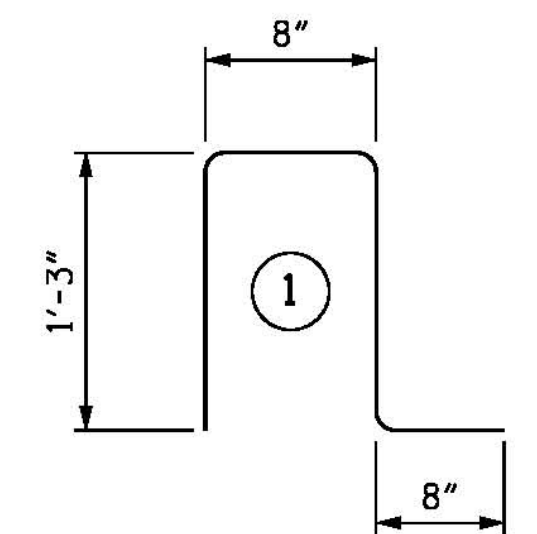
BAR	NUMBER	SIZE	TYPE	LENGTH	WEIGHT
B1	440	#4	STR	29'-6"	8671
B2	8	#4	STR	20'-9"	111
B3	8	#4	STR	15'-7"	83
B4	8	#4	STR	18'-1"	97
B5	8	#4	STR	16'-0"	86
B6	24	#4	STR	24'-5"	391
B7	4	#4	STR	22'-1"	59
B8	4	#4	STR	23'-0"	61
B9	8	#4	STR	25'-4"	135
B10	4	#4	STR	19'-7"	52
B11	4	#4	STR	22'-0"	59

U2	3737	#4	1	3'-10"	9569
----	------	----	---	--------	------

EPOXY COATED REINFORCING
STEEL LBS. 19,374

CLASS AA CONCRETE: C.Y. 103.7

BAR TYPES



ALL BAR DIMENSIONS ARE OUT TO OUT.

BILL OF MATERIAL INCLUDES CLASS AA
CONCRETE AND EPOXY COATED REINFORCING
STEEL FOR CONCRETE CURB ON BRIDGE DECK
ONLY. CONCRETE AND REINFORCING STEEL
FOR THE CONCRETE CURB ON APPROACH SLAB
IS INCLUDED IN THE APPROACH SLAB
BILL OF MATERIAL.

PROJECT NO. B-4929
PENDER COUNTY
STATION: 38+13.81 -L2-

SHEET 8 OF 13

STATE OF NORTH CAROLINA
DEPARTMENT OF TRANSPORTATION
RALEIGH
SUPERSTRUCTURE
PEDESTRIAN RAILING
CURB DETAILS



**PARSONS
BRINCKERHOFF**
434 FAYETTEVILLE STREET
SUITE 1500
RALEIGH, NC 27601
LICENSE NO. F-0165

DocuSigned by:
Jason R. Doughty
00F1C86448274F7

REVISIONS

NO.	BY:	DATE:	NO.	BY:	DATE:
1			3		
2			4		

SHEET NO.

S-126

TOTAL SHEETS
278

**DOCUMENT NOT CONSIDERED FINAL
UNLESS ALL SIGNATURES COMPLETED**

5/10/2016
400_249_B4929_SMU_PED08.dgn

DESIGNED BY: JRD / EMD DATE: OCT 2015
DRAWN BY: K. WHITE DATE: OCT 2015
CHECKED BY: J. SHERMAN DATE: JAN 2016
DESIGN ENGINEER OF RECORD: J. DOUGHTY DATE: MAY 2016