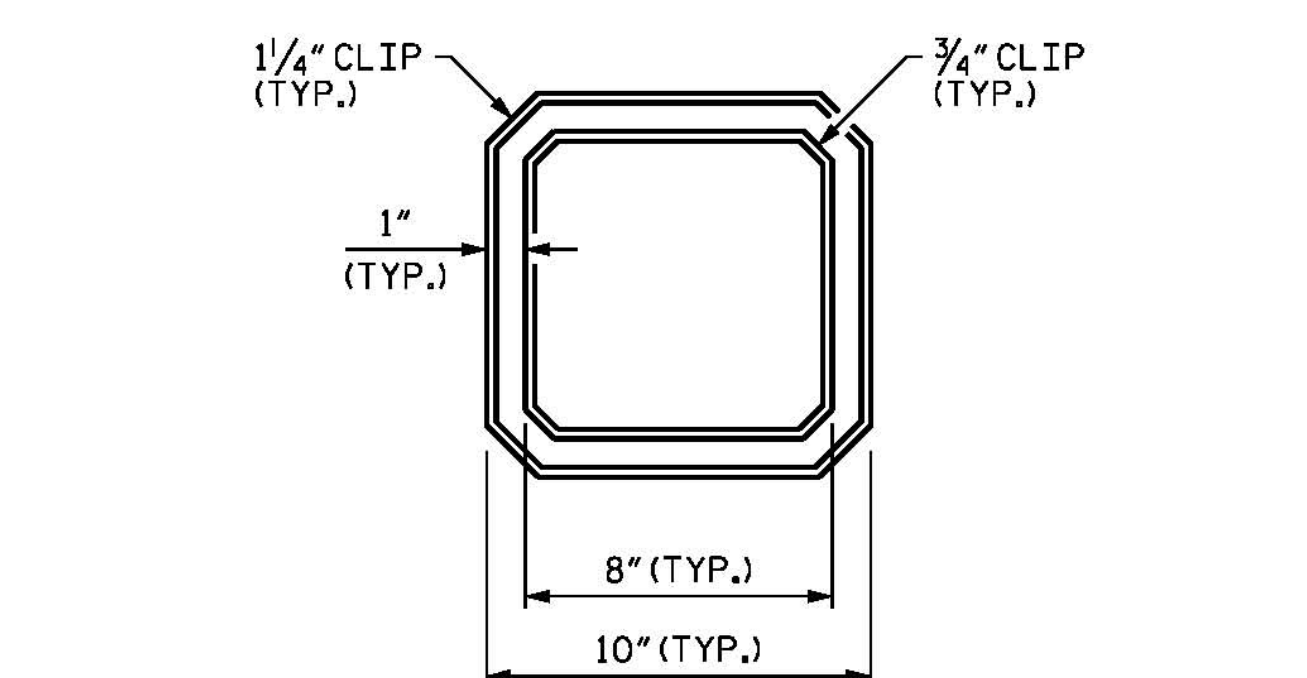
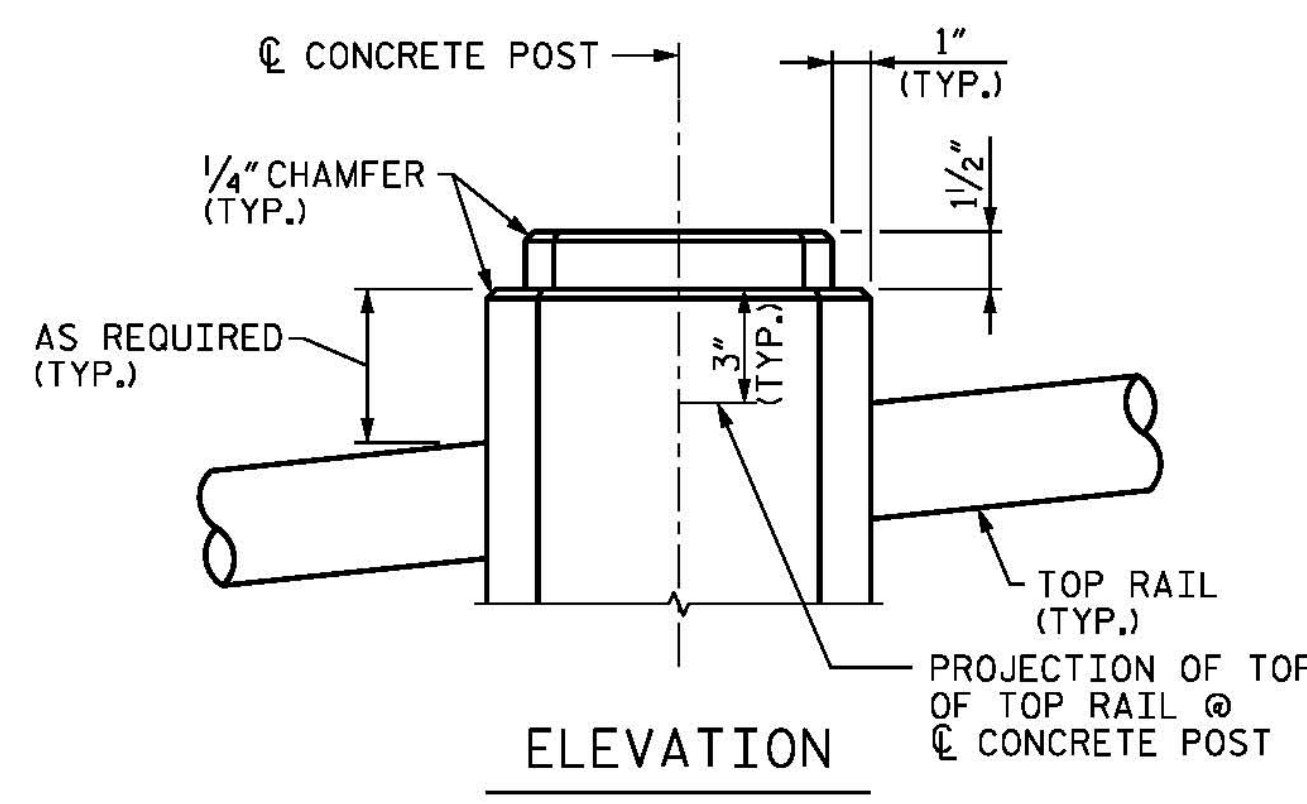


BILL OF MATERIAL (1 CONCRETE POST)					
BAR	NUMBER	SIZE	TYPE	LENGTH	WEIGHT
S1	5	#4	1	2'-8"	9
U1	3	#4	2	1'-9"	4
V1	4	#4	STR	4'-5"	12
V2	4	#4	3	4'-2"	11
EPOXY COATED REINFORCING STEEL				LBS.	36.0
CLASS AA CONCRETE:				C.Y.	0.1
BAR TYPES					
ALL BAR DIMENSIONS ARE OUT TO OUT.					

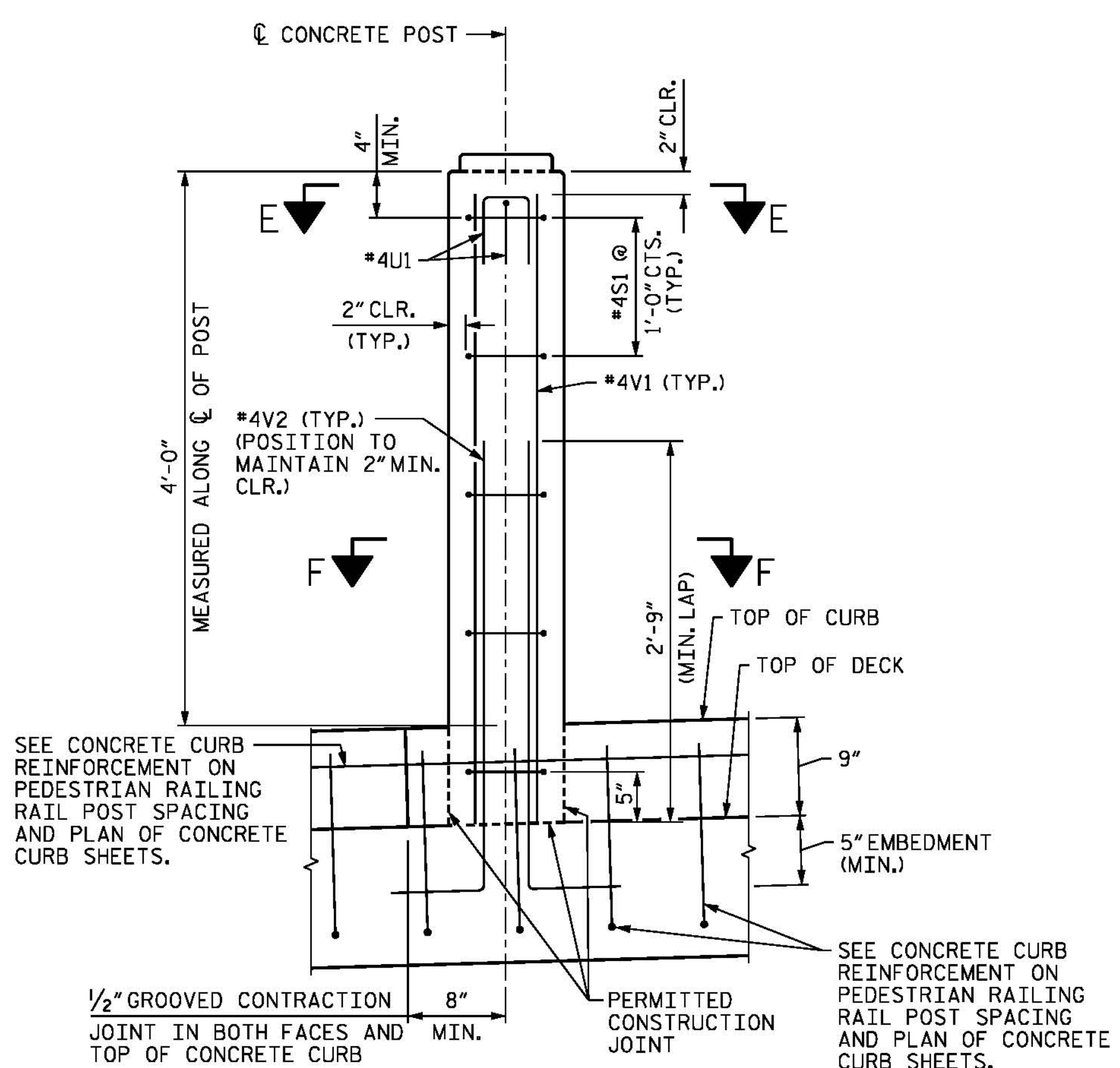


PLAN



TOP OF CONCRETE POST

(REINFORCEMENT AND TOP RAIL CONNECTION NOT SHOWN FOR CLARITY)

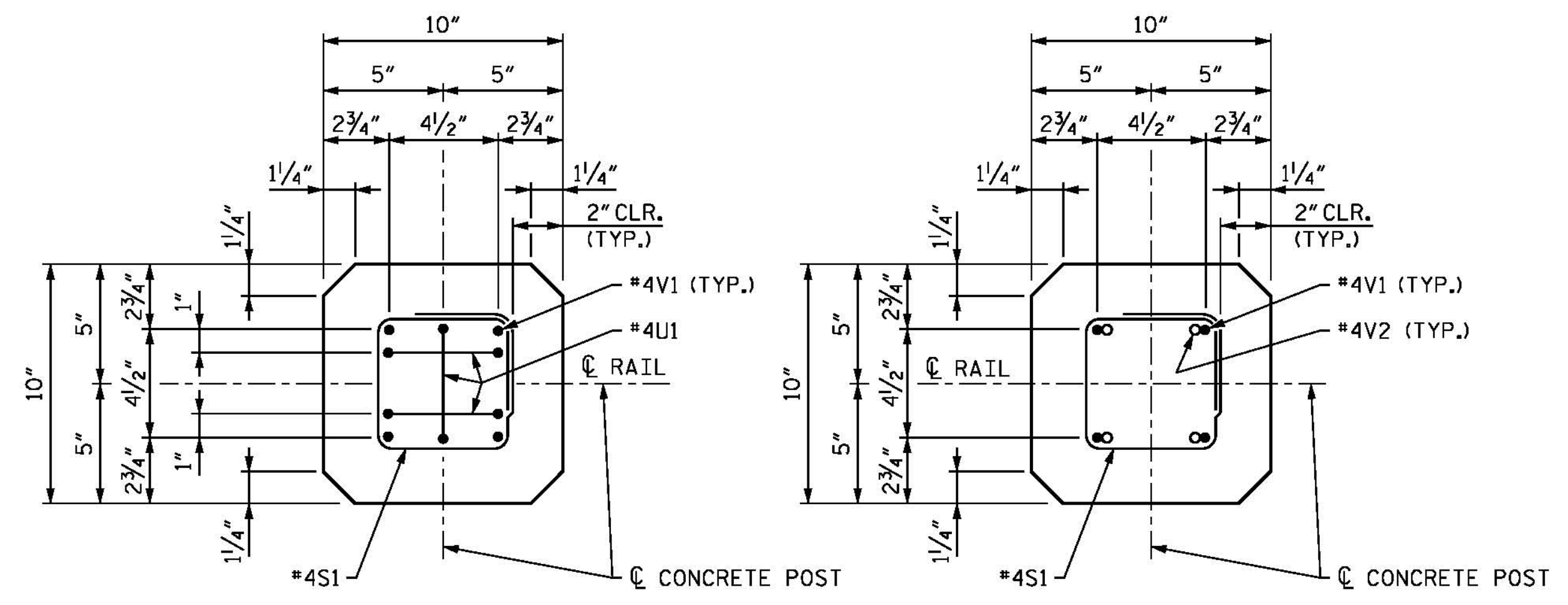


TYPICAL ELEVATION

(ELEVATION ON BRIDGE DECK IS SHOWN. FOR ELEVATION ON END BENT DETAILS SHEETS, SEE END BENT DETAILS SHEETS.)

NOTE

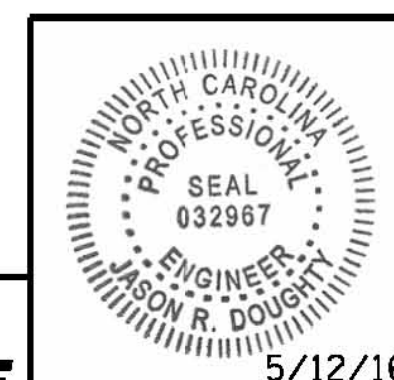
THE CONTRACTOR IS PERMITTED TO SHIFT THE POSITION OF CONCRETE CURB REINFORCEMENT BY 2" MAXIMUM TO AVOID ANY CONFLICTS WITH THE REINFORCING STEEL FROM THE CONCRETE POST AND DECK DRAINS.



SECTION E-E

SECTION F-F

PROJECT NO. B-4929  
PENDER COUNTY  
 STATION: 38+13.81 -L2-  
 SHEET 7 OF 13



**PARSONS BRINCKERHOFF**  
 434 FAYETTEVILLE STREET  
 SUITE 1500  
 RALEIGH, NC 27601  
 LICENSE NO. F-0165

DocuSigned by:  
 Jason R. Doughty  
 00F1C86448274F7...

STATE OF NORTH CAROLINA  
 DEPARTMENT OF TRANSPORTATION  
 RALEIGH  
 SUPERSTRUCTURE  
 PEDESTRIAN RAILING  
 CONCRETE POST  
 DETAILS

REVISIONS						SHEET NO.
NO.	BY:	DATE:	NO.	BY:	DATE:	S-125
1			3			TOTAL SHEETS
2			4			278

**DOCUMENT NOT CONSIDERED FINAL  
 UNLESS ALL SIGNATURES COMPLETED**

5/10/2016 400\_247\_B4929\_SMU\_PED07.dgn

DESIGNED BY: JRD / EMD DATE: OCT 2015  
 DRAWN BY: K. WHITE DATE: OCT 2015  
 CHECKED BY: J. SHERMAN DATE: JAN 2016  
 DESIGN ENGINEER OF RECORD: J. DOUGHTY DATE: MAY 2016