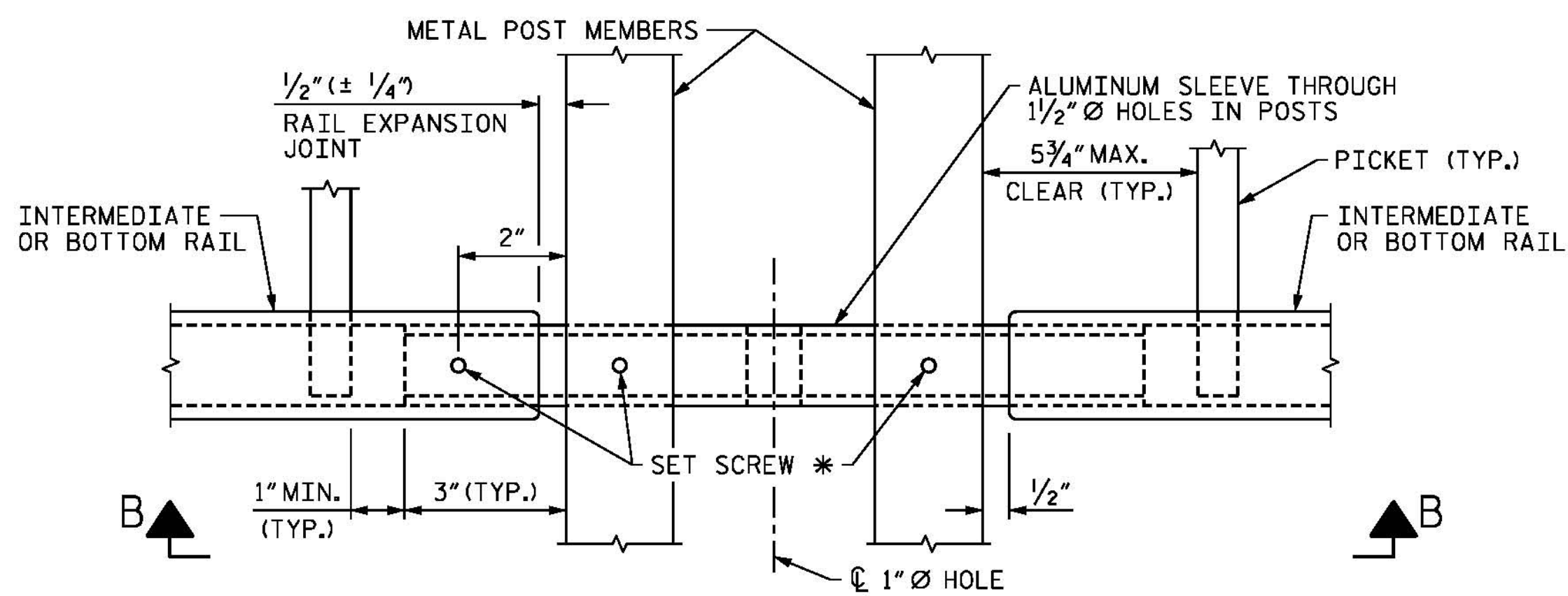
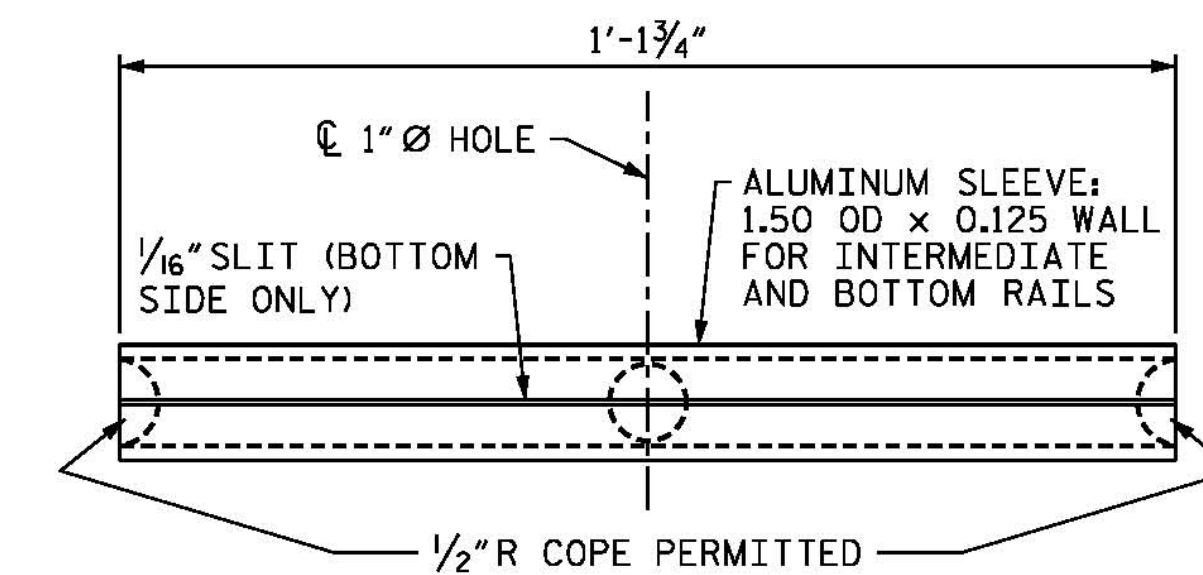


TOP RAIL
TOP RAIL AT EXPANSION JOINT SHOWN



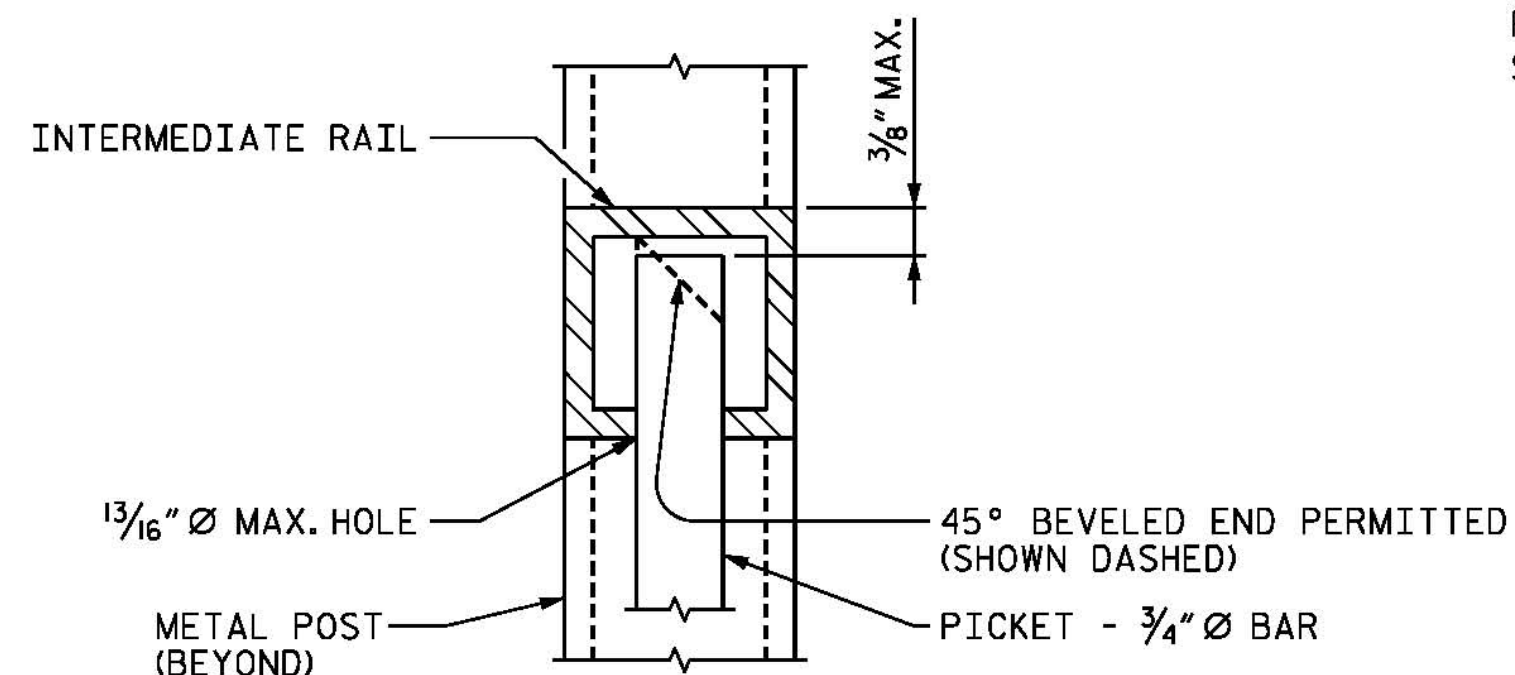
INTERMEDIATE OR BOTTOM RAIL
BOTTOM RAIL AT RAIL EXPANSION JOINT SHOWN



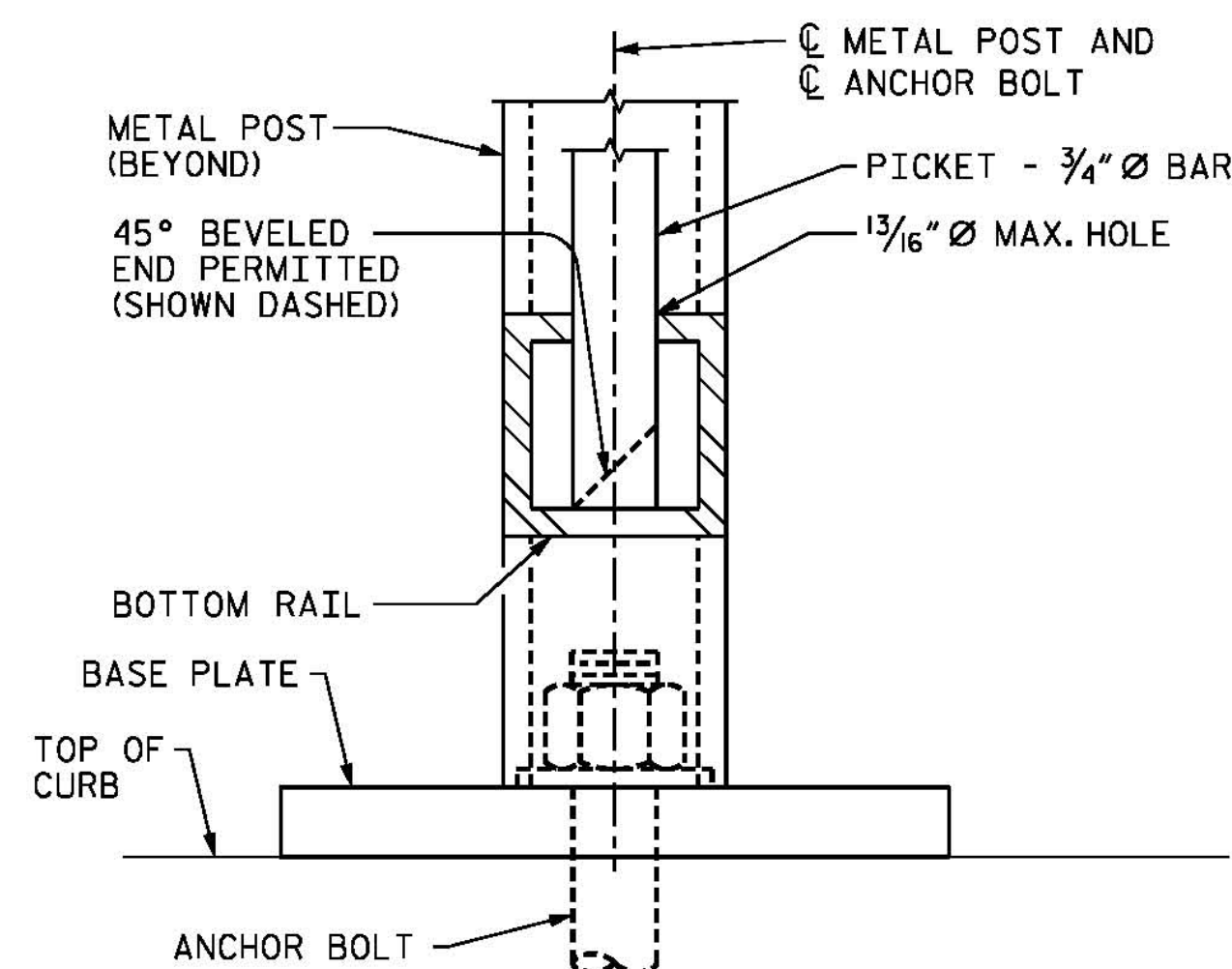
VIEW B-B
INTERMEDIATE OR BOTTOM RAIL
- ALUMINUM SLEEVE DETAIL
BOTTOM SIDE SHOWN

DETAIL B - RAIL EXPANSION JOINT

* 1/4" ϕ x 3/4" PAN HEAD ALUMINUM (ALLOY 2024-T4 OR 7075-T73) OR STAINLESS STEEL (TYPE 316 OR 18-8 ALLOY) SET SCREWS. SCREWS MUST BE SET FLUSH AGAINST THE OUTSIDE FACE OF RAILS AND POSTS. A SINGLE 3/4" ϕ PLUG WELD MAY BE SUBSTITUTED FOR THE SET SCREWS.



DETAIL C
SECTION AT TOP OF PICKET



DETAIL D
SECTION AT BOTTOM OF PICKET

PROJECT NO. B-4929
PENDER COUNTY
STATION: 38+13.81 -L2-

SHEET 5 OF 13



STATE OF NORTH CAROLINA
DEPARTMENT OF TRANSPORTATION
RALEIGH
SUPERSTRUCTURE
PEDESTRIAN RAILING
DETAILS

DESIGNED BY: JRD/EMD DATE: OCT 2015
DRAWN BY: K. WHITE DATE: OCT 2015
CHECKED BY: J. SHERMAN DATE: JAN 2016
DESIGN ENGINEER OF RECORD: J. DOUGHTY DATE: MAY 2016

PARSONS BRINCKERHOFF
434 FAYETTEVILLE STREET
SUITE 1500
RALEIGH, NC 27601
LICENSE NO. F-0165

DocuSigned by:
Jason R. Doughty
00F1C86448274F7...

**DOCUMENT NOT CONSIDERED FINAL
UNLESS ALL SIGNATURES COMPLETED**

REVISIONS						SHEET NO.
NO.	BY:	DATE:	NO.	BY:	DATE:	TOTAL SHEETS
1			3			278
2			4			

5/10/2016 400_243_B4929_SMU_PED05.dgn