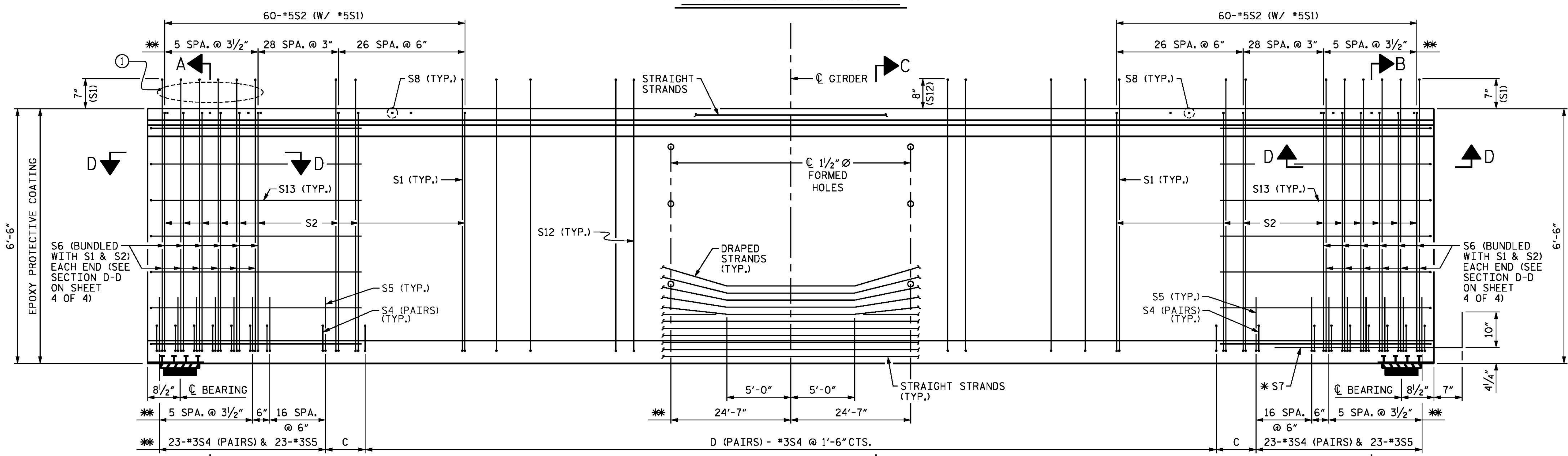


PLAN OF GIRDER



ELEVATION OF GIRDER

SPAN N GIRDER DIMENSIONS							
GIRDER	L	A	B	C	D	E	F
GDR. N1	146'-3 1/8"	1'-5 9/16"	37	1'-5 9/16"	83	8 1/16"	129
GDR. N2	147'-5 3/4"	1'-3 3/8"	38	1'-3 3/8"	84	9 3/8"	130
GDR. N3	148'-8 3/8"	1'-2 3/16"	39	1'-2 3/16"	85	10 1/16"	131
GDR. N4	149'-11 1/8"	1'-0 9/16"	40	1'-0 9/16"	86	6 1/16"	133
GDR. N5	151'-1 3/4"	10 7/8"	41	10 7/8"	87	7 3/8"	134

NOTES

SEE PARTIAL ELEVATION ON SHEET 4 OF 4 FOR ADDITIONAL "S" BARS.

* MEASURED AND SPACE ALONG GIRDER BOTTOM FLANGE. SEE GIRDER LENGTH DETAIL ON "PRESTRESSED CONCRETE GIRDER CONTINUOUS FOR LIVE LOAD DETAILS - F.I.B. GIRDERS" SHEET.

① ROTATE END "S" BARS SUCH THAT THEY ARE PLACED PARALLEL TO THE END BEVEL WHILE MAINTAINING 2" OF CONCRETE COVER, TAPER SPACING OF ADJACENT "S" BARS SUCH THAT THE CLEAR DISTANCE BETWEEN THE BARS EXCEEDS 1 1/2".

ALTERNATE DIRECTION OF #5S1, #5S2, #5S3 AND #5S12 BARS.

PROJECT NO. B-4929
PENDER COUNTY
 STATION: 38+13.81 -L2-
 SHEET 1 OF 4

STATE OF NORTH CAROLINA
 DEPARTMENT OF TRANSPORTATION
 RALEIGH
 SUPERSTRUCTURE
F.I.B. 78"
PRESTRESSED
CONCRETE GIRDER
 (SPAN N)

DESIGNED BY: B. LOFLIN DATE: JAN 2016
 DRAWN BY: M. HOBBS DATE: JAN 2016
 CHECKED BY: J. SHERMAN DATE: FEB 2016
 DESIGN ENGINEER OF RECORD: J. DOUGHTY DATE: MAY 2016

5/10/2016
 400.167.B4929_SMU_FIB78_01.dgn

DESIGNED BY: B. LOFLIN DATE: JAN 2016
 DRAWN BY: M. HOBBS DATE: JAN 2016
 CHECKED BY: J. SHERMAN DATE: FEB 2016
 DESIGN ENGINEER OF RECORD: J. DOUGHTY DATE: MAY 2016

PARSONS BRINCKERHOFF
 434 FAYETTEVILLE STREET
 SUITE 1500
 RALEIGH, NC 27601
 LICENSE NO. F-0165

DocuSigned by:
 Jason R. Doughty
 00F1C96448274F7...
 5/12/16

REVISIONS

NO.	BY:	DATE:	NO.	BY:	DATE:
1			3		
2			4		

SHEET NO. **S-85**
 TOTAL SHEETS 278

DOCUMENT NOT CONSIDERED FINAL
 UNLESS ALL SIGNATURES COMPLETED