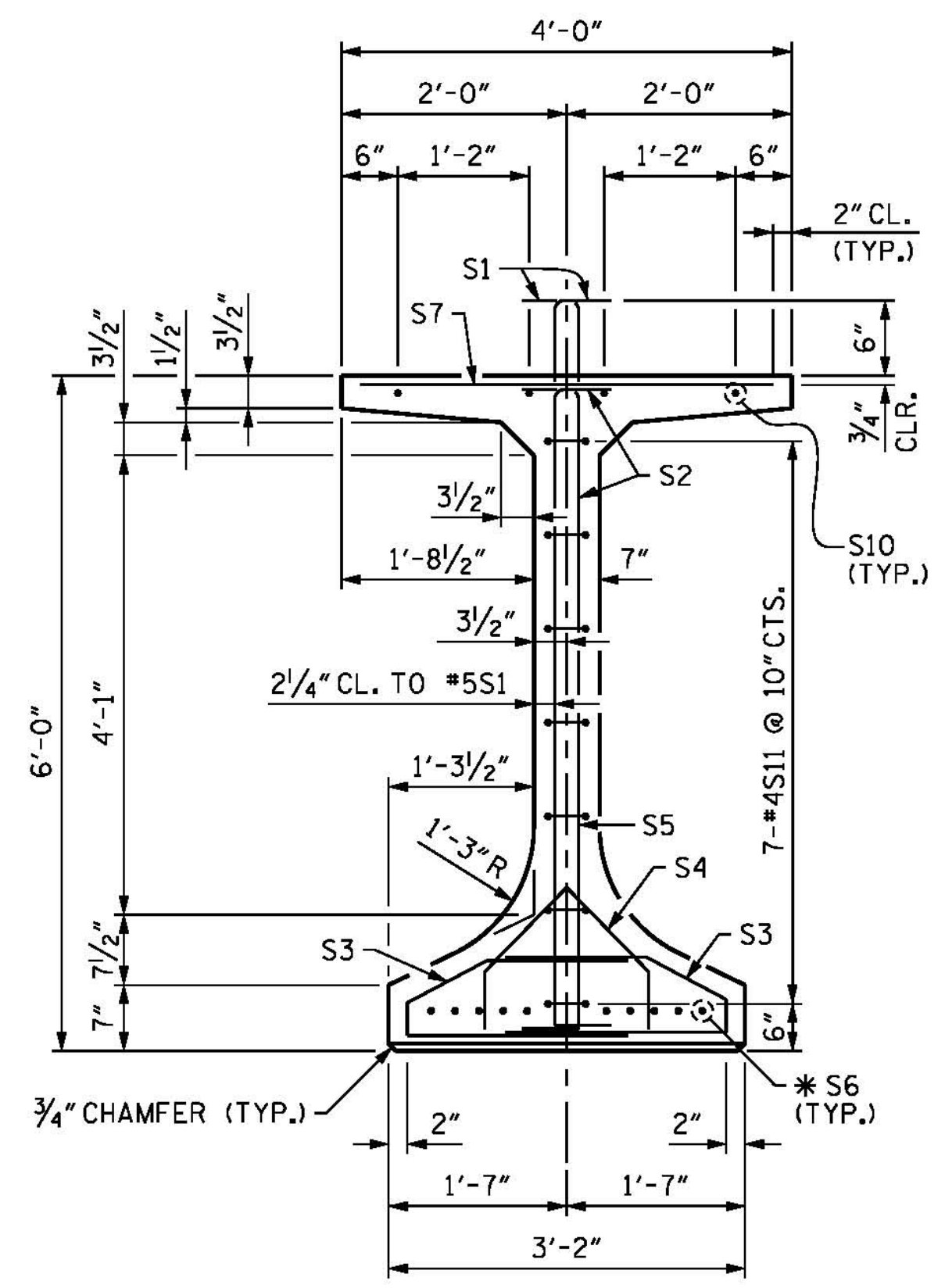
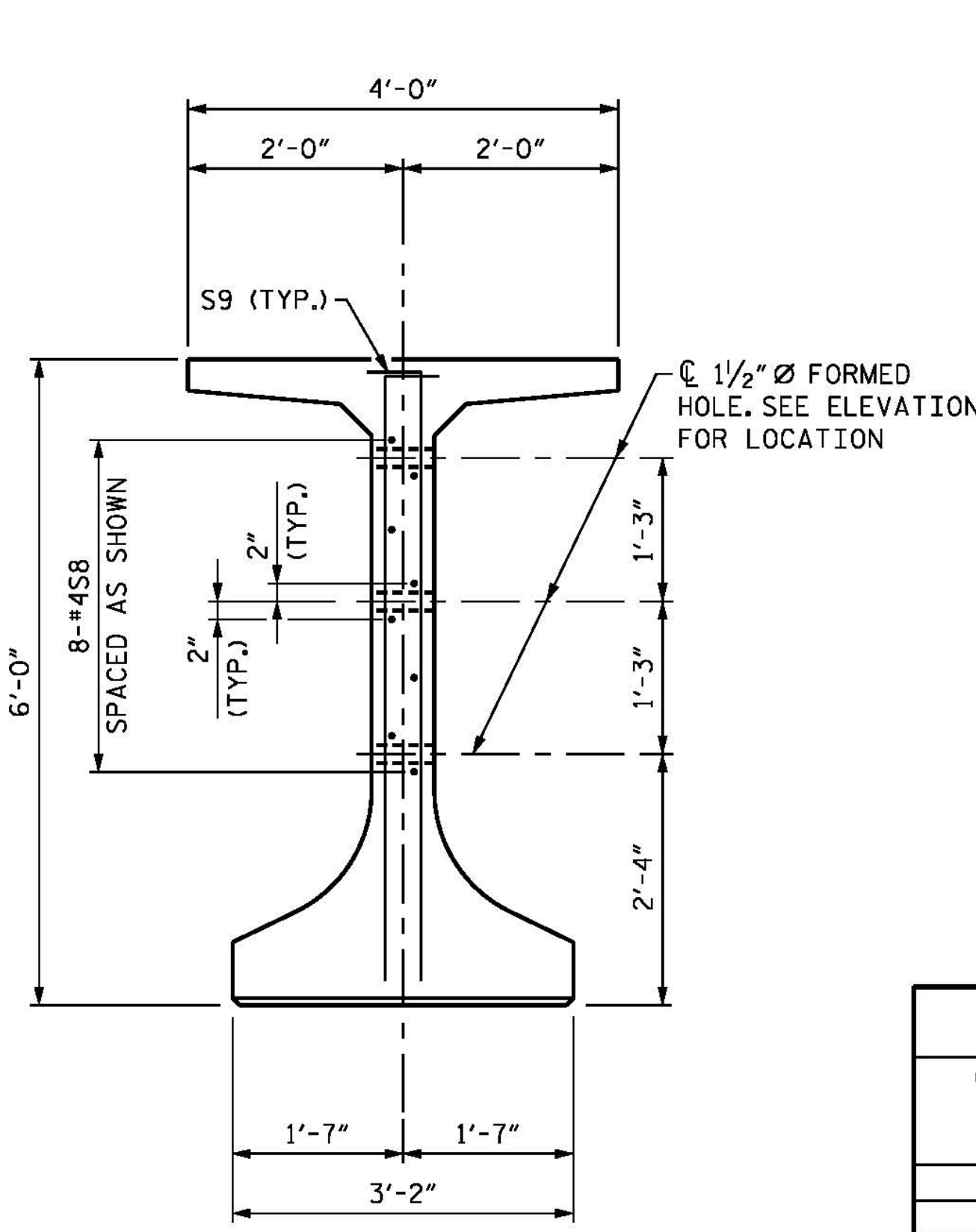


SECTION A-A



SECTION B-B



SECTION C-C

(S1, S3 AND S7 BARS NOT SHOWN)

0.6" Ø L. R. GRADE 270 STRANDS		
AREA (SQUARE INCHES)	ULTIMATE STRENGTH (LBS. PER STRAND)	APPLIED PRESTRESS (LBS. PER STRAND)
0.217	58,600	43,950

REINFORCING STEEL FOR ONE GIRDER

BAR	NUMBER	SIZE	TYPE	LENGTH	WEIGHT	
GDRS. M1	S1	208	#5	1	7'-3"	1573
GDRS. M2-M5, Z1-Z6	S1	209	#5	1	7'-3"	1580
	S2	114	#5	1	6'-8"	793
GDRS. M1	S3	246	#3	3	4'-4"	401
GDRS. M2-M5, Z1-Z6	S3	248	#3	3	4'-4"	404
	S4	42	#3	2	3'-3"	51
	S5	24	#5	STR	5'-6"	138
GDRS. M1-M6	*S6	10	#5	STR	3'-8"	38
GDR. M1	S7	156	#4	STR	3'-8"	382
GDRS. M2 AND M3	S7	157	#4	STR	3'-8"	385
GDRS. M4, M5, Z1-Z6	S7	158	#4	STR	3'-8"	387
	S8	16	#4	STR	8'-0"	86
	S9	16	#4	4	6'-2"	66
	S10	8	#6	STR	26'-0"	312
	S11	14	#4	5	11'-8"	109

* NOTE: S6 BARS SHALL BE BENT BEFORE SHIPMENT. HEAT BENDING SHALL NOT BE ALLOWED.

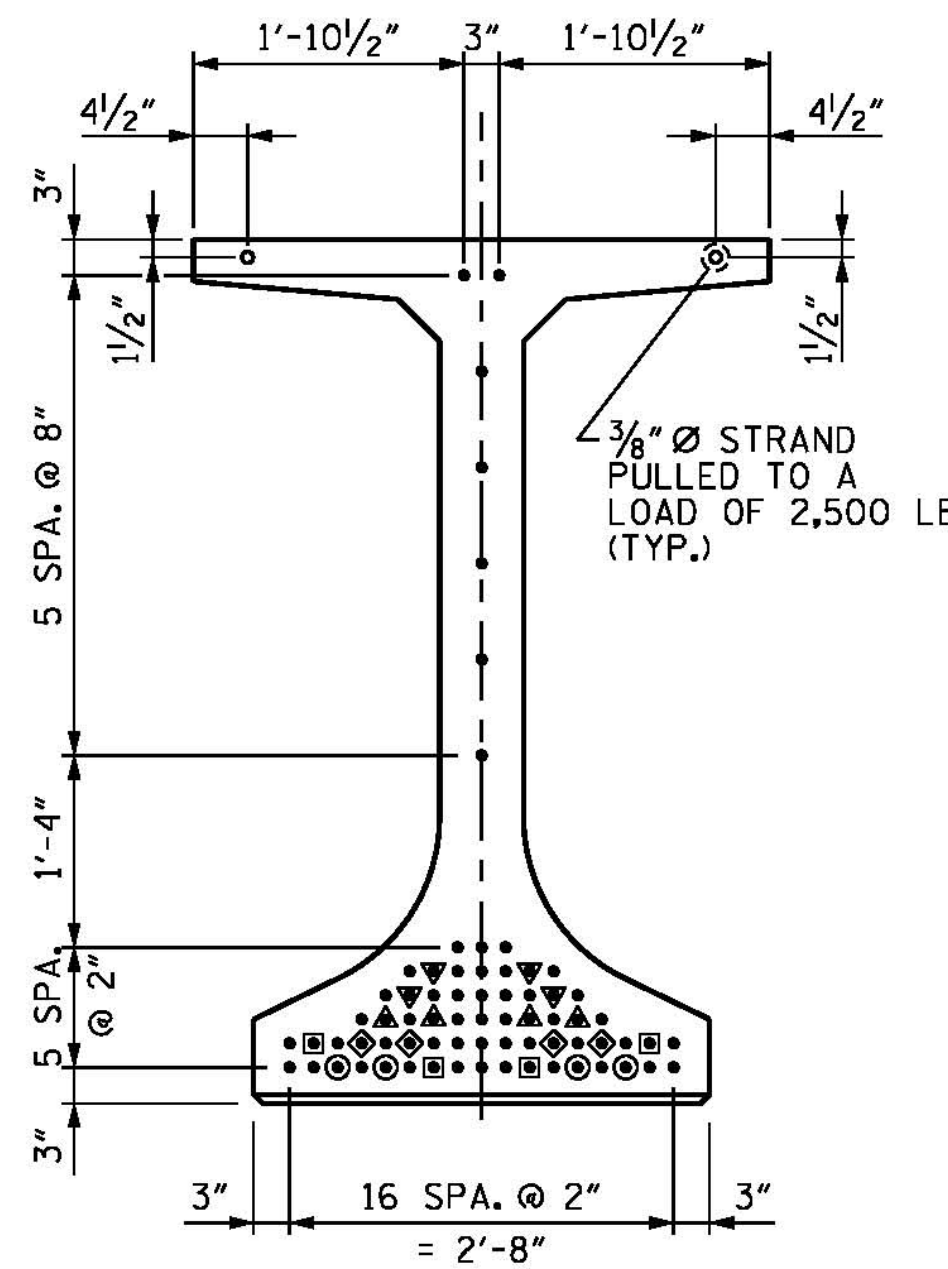
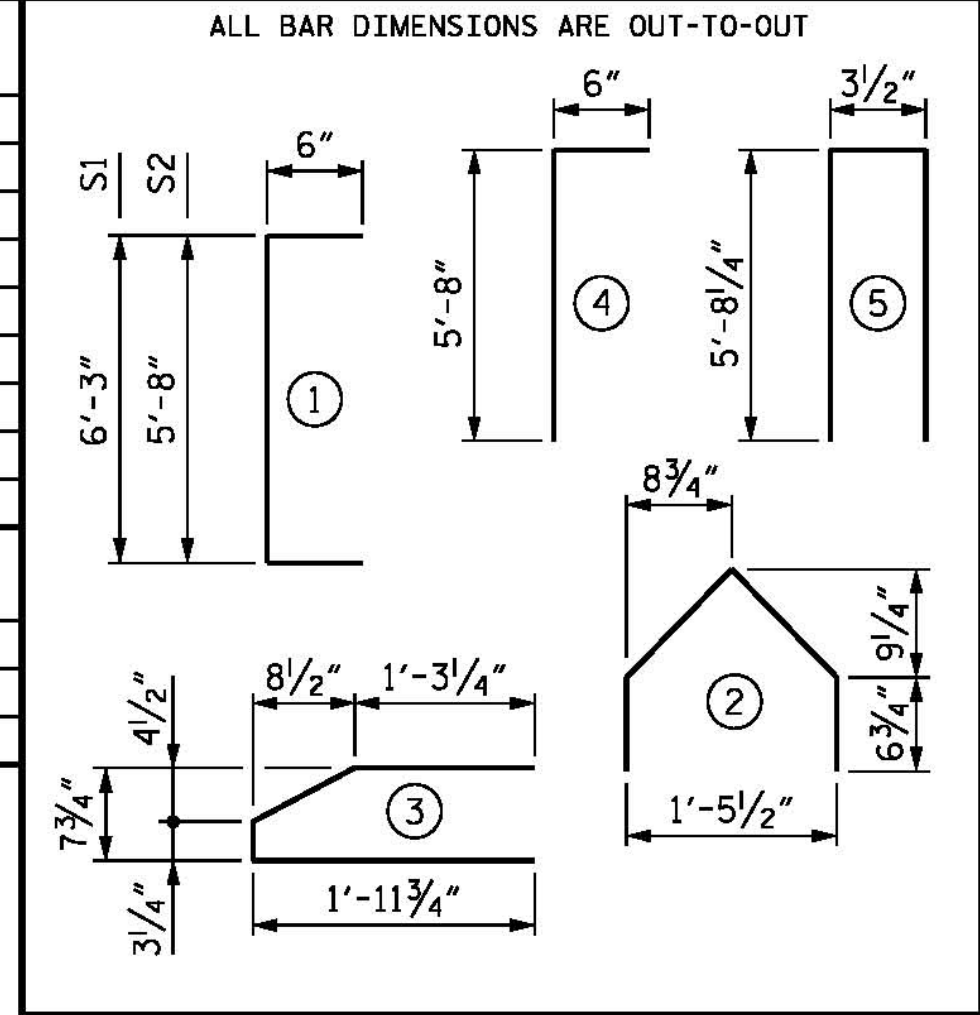
QUANTITIES FOR ONE GIRDER

GIRDERS	REINFORCING STEEL	10,000 PSI CONCRETE	0.6" Ø L.R. STRANDS
	LB.	C.Y.	NO.
M1	3949	37.9	71
M2	3962	38.1	71
M3	3962	38.2	71
M4	3964	38.4	71
M5	3964	38.6	71
Z1, Z2, Z3	3926	38.3	71
Z4, Z5	3926	38.4	71
Z6	3926	38.5	71

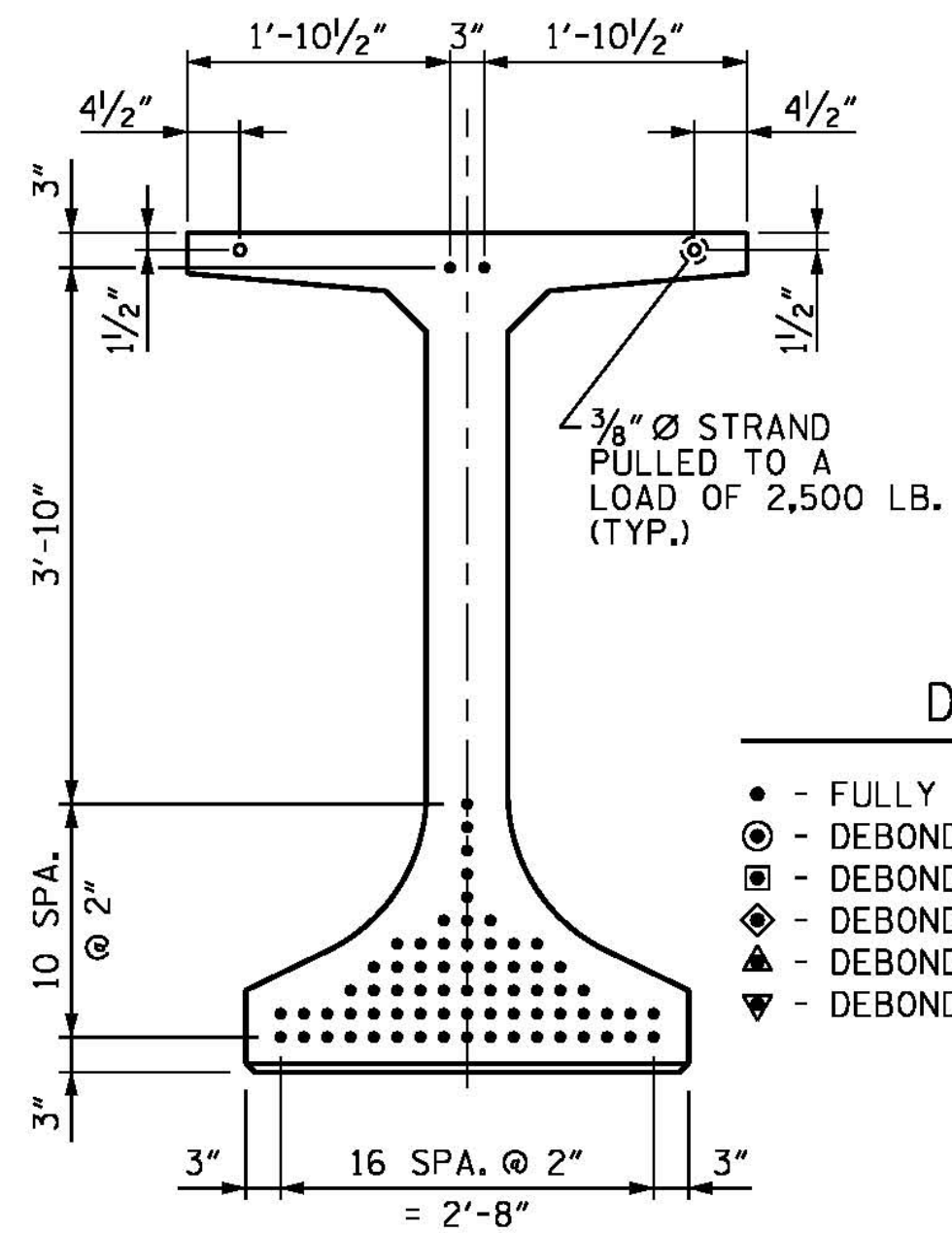
GIRDERS REQUIRED

NUMBER	LENGTH	TOTAL LENGTH
11	VARIES	1548.69'

BAR TYPES



AT END OF GIRDER



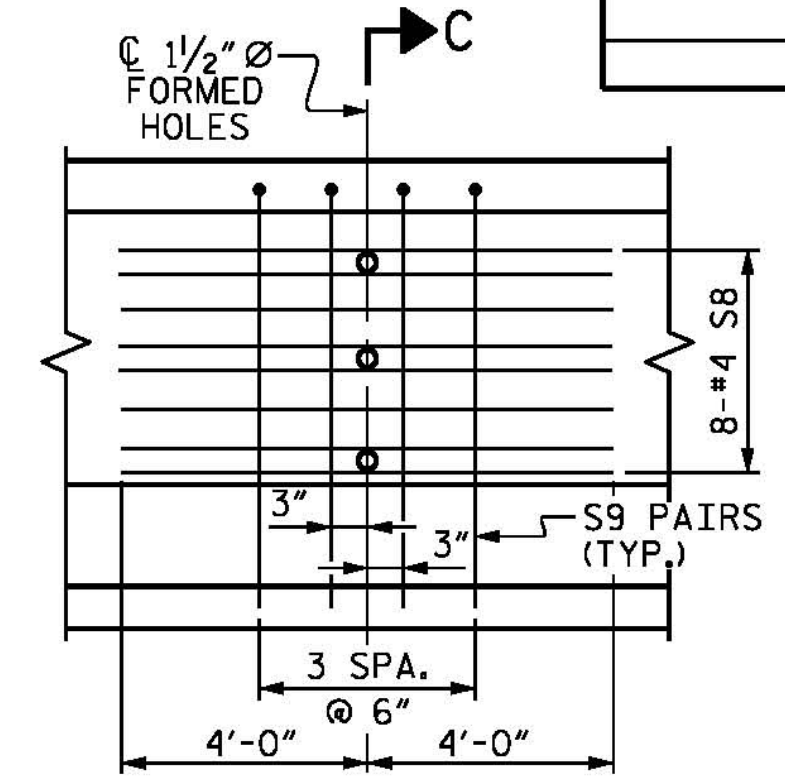
AT CL OF GIRDER

0.6" Ø LOW RELAXATION STRAND LAYOUT

(71 STRANDS REQUIRED)

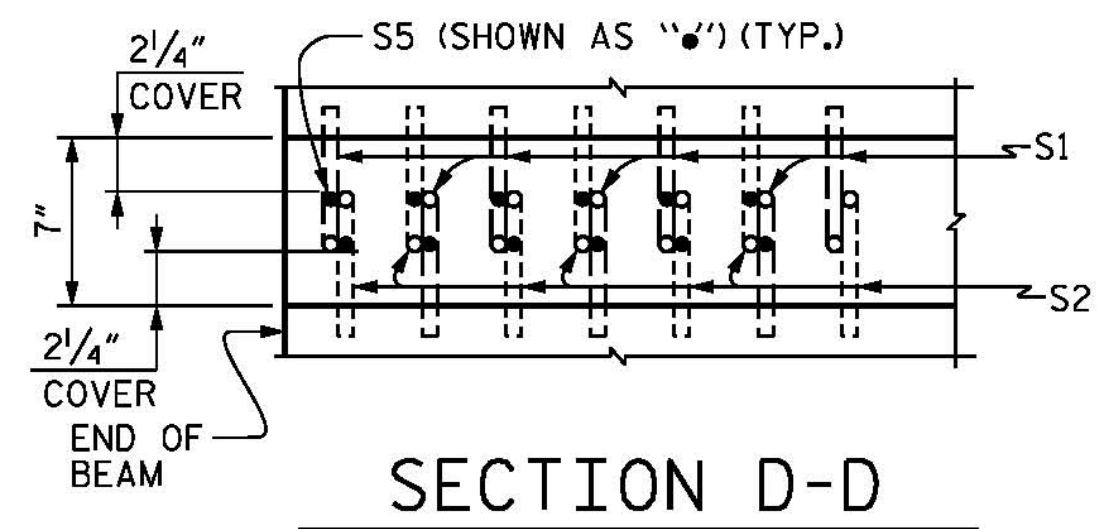
DEBONDING LEGEND

- - FULLY BONDED STRANDS
- - DEBONDED FOR 20'-0" FROM END OF GIRDER
- ◻ - DEBONDED FOR 16'-0" FROM END OF GIRDER
- ◊ - DEBONDED FOR 12'-0" FROM END OF GIRDER
- ◈ - DEBONDED FOR 8'-0" FROM END OF GIRDER
- ◉ - DEBONDED FOR 4'-0" FROM END OF GIRDER



PARTIAL ELEVATION

SHOWING INTERMEDIATE STEEL DIAPHRAGM REINFORCING STEEL FOR ALL SPANS.



SECTION D-D

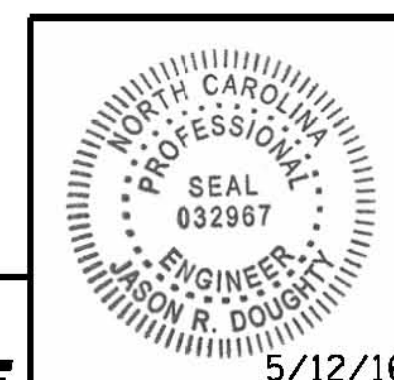
PROJECT NO. B-4929

PENDER COUNTY

STATION: 38+13.81 -L2-

SHEET 3 OF 3

STATE OF NORTH CAROLINA
 DEPARTMENT OF TRANSPORTATION
 RALEIGH
 SUPERSTRUCTURE
 F.I.B. 72"
 PRESTRESSED
 CONCRETE GIRDER
 (SPANS M AND Z)



DocuSigned by:
 Jason R. Doughty
 00F1C86448274F7...
 5/12/16

PARSONS BRINCKERHOFF
 434 FAYETTEVILLE STREET
 SUITE 1500
 RALEIGH, NC 27601
 LICENSE NO. F-0165

DOCUMENT NOT CONSIDERED FINAL
 UNLESS ALL SIGNATURES COMPLETED

REVISIONS		SHEET NO.	
NO.	BY:	DATE:	NO.
1			3
2			4

SHEET NO. S-84
 TOTAL SHEETS 278

5/10/2016 400_165_B4929_SMU_FIB72_10.dgn

DESIGNED BY:	J. BORUTA	DATE:	JAN 2016
DRAWN BY:	KEW/MAH	DATE:	JAN 2016
CHECKED BY:	B. LOFLIN	DATE:	FEB 2016
DESIGN ENGINEER OF RECORD:	J. DOUGHTY	DATE:	MAY 2016