

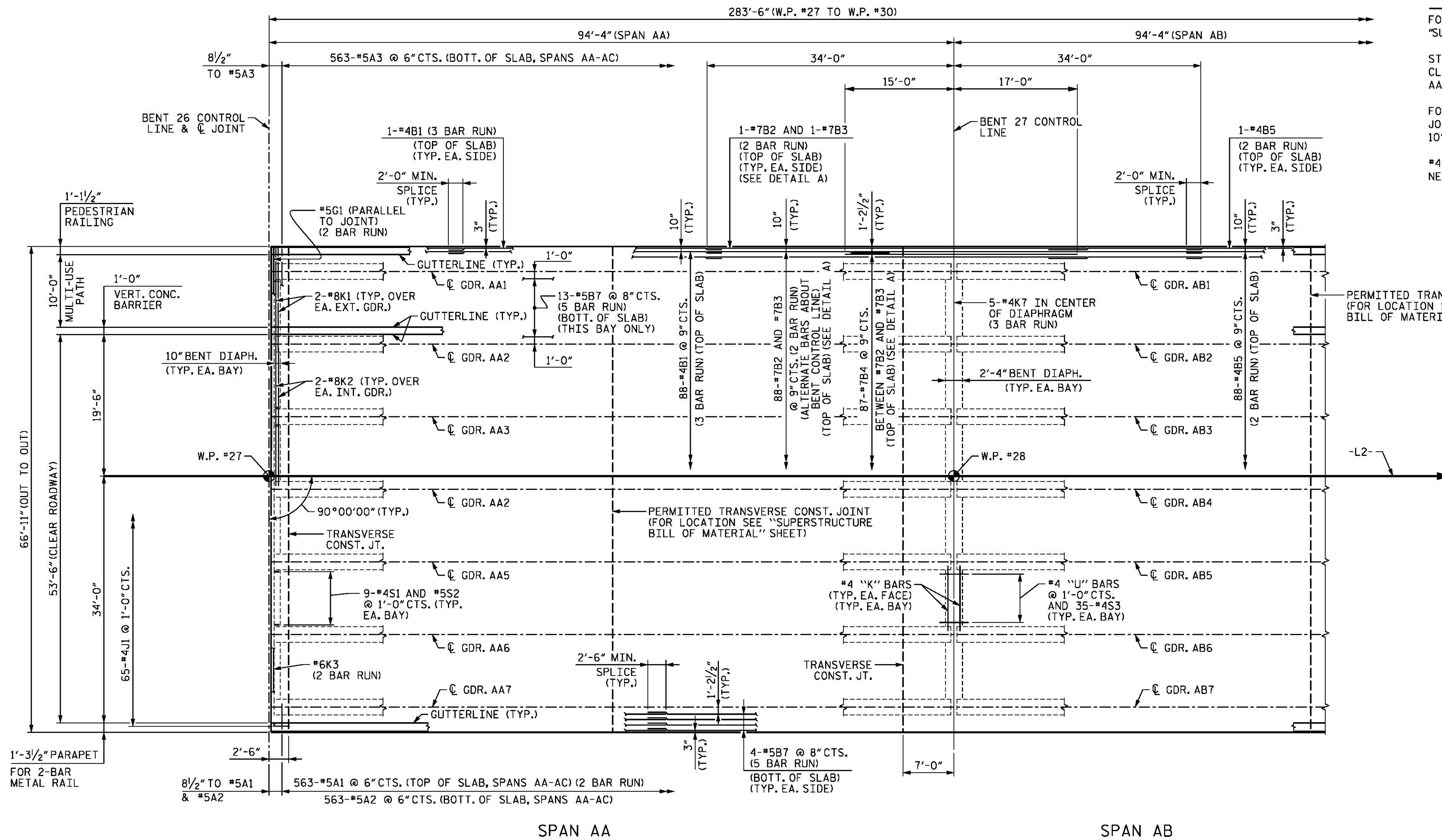
NOTES

FOR LAP LENGTHS NOT SHOWN, REFER TO TABLE ON "SUPERSTRUCTURE BILL OF MATERIAL UNIT 10" SHEET.

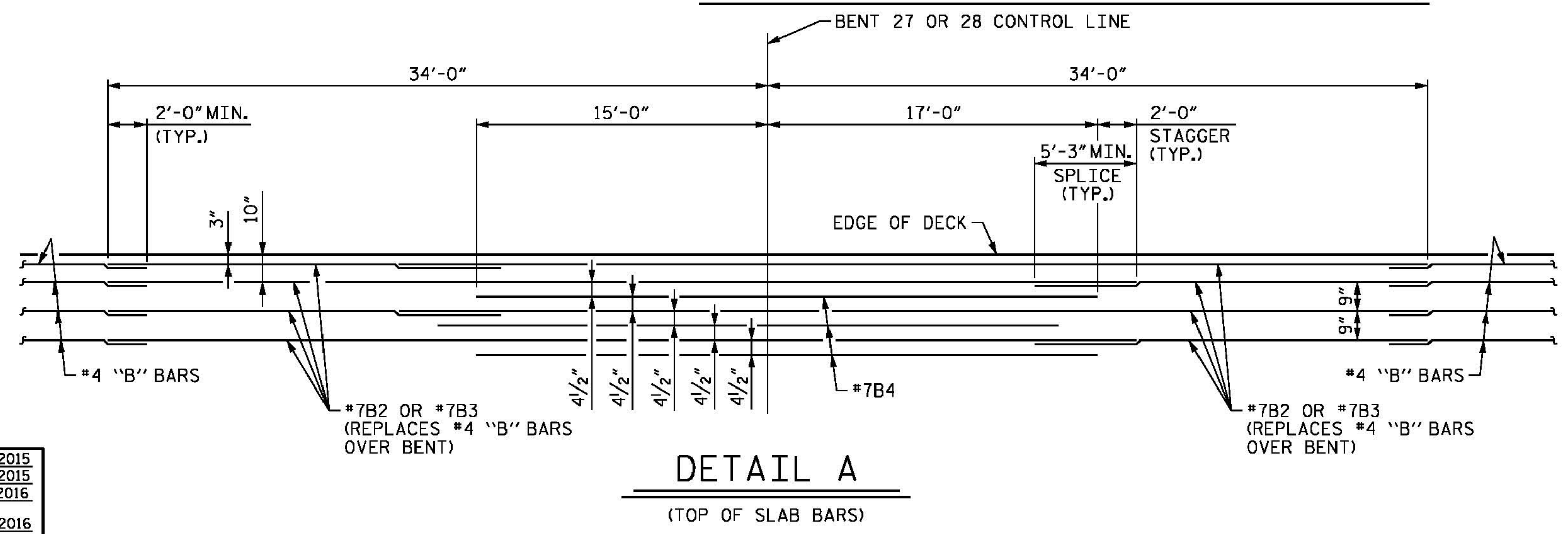
STEEL INTERMEDIATE DIAPHRAGMS NOT SHOWN FOR CLARITY. FOR LOCATIONS, SEE "FRAMING PLAN SPANS AA AND AB" AND "FRAMING PLAN SPAN AC" SHEETS.

FOR POURING SEQUENCE AND TRANSVERSE CONSTRUCTION JOINT, SEE "SUPERSTRUCTURE BILL OF MATERIAL UNIT 10" SHEET.

*4S1 AND *5S2 BARS MAY BE SHIFTED SLIGHTLY, AS NECESSARY, TO CLEAR STUD ANCHORS.



SPAN AA **SPAN AB**
PART PLAN OF SPANS - UNIT 10



DETAIL A
(TOP OF SLAB BARS)

PROJECT NO. B-4929
PENDER COUNTY
STATION: 38+13.81 -L2-
SHEET 1 OF 2

STATE OF NORTH CAROLINA
DEPARTMENT OF TRANSPORTATION
RALEIGH
SUPERSTRUCTURE
PLAN OF SPANS
UNIT 10
SPANS AA, AB AND AC

5/12/16
DocuSigned by:
Jason R. Doughty
00F1C86448274F7...

REVISIONS				SHEET NO.
NO.	BY:	DATE:	NO.	DATE:
1			3	
2			4	

SHEET NO. **S-59**
TOTAL SHEETS **278**

PARSONS BRINCKERHOFF
434 FAYETTEVILLE STREET
SUITE 1500
RALEIGH, NC 27601
LICENSE NO. F-0165

DESIGNED BY: J. BORUTA DATE: NOV 2015
DRAWN BY: M. HOBBS DATE: NOV 2015
CHECKED BY: E. DAVIS DATE: FEB 2016
DESIGN ENGINEER OF RECORD: J. DOUGHTY DATE: MAY 2016

5/10/2016
400.115.B4929_SML_PS81.dgn