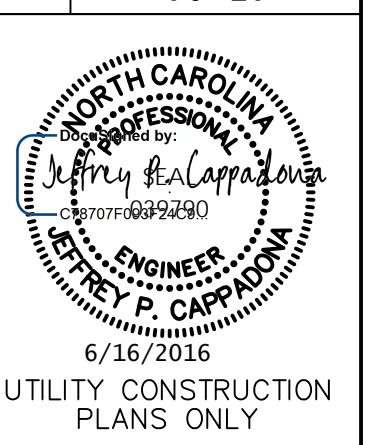


2016-6-8

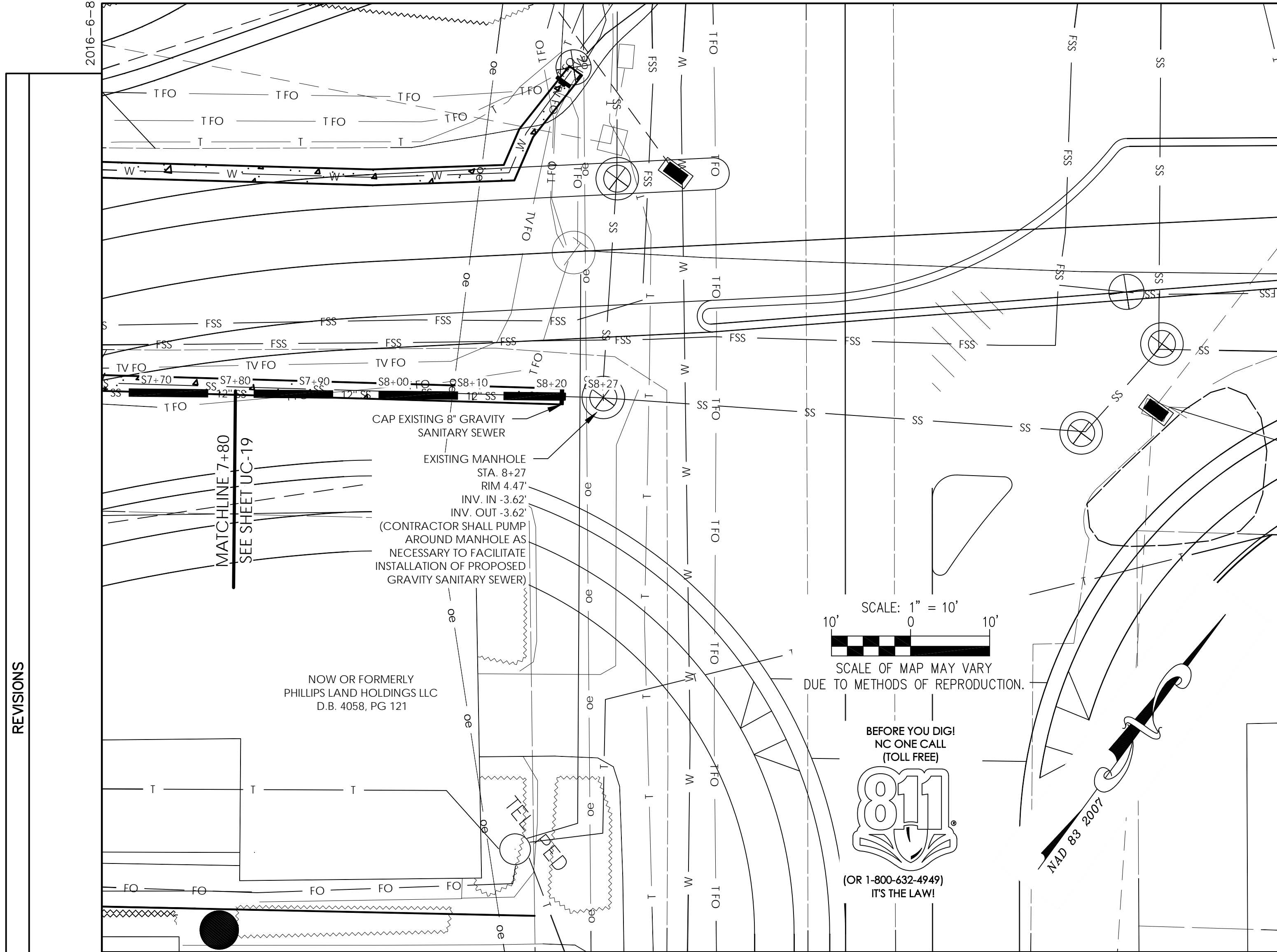
DOCUMENT NOT CONSIDERED FINAL
UNLESS ALL SIGNATURES COMPLETED

PROJECT REFERENCE NO. B-4929	SHEET NO. UC-20
---------------------------------	--------------------

DESIGNED BY: JPC
 DRAWN BY: JPC
 CHECKED BY: WGS
 APPROVED BY: JPC
 REVISED:
 NORTH CAROLINA
 DEPARTMENT OF
 TRANSPORTATION
 UTILITIES ENGINEERING SEC.
 PHONE: (919)707-6690
 FAX: (919)250-4151

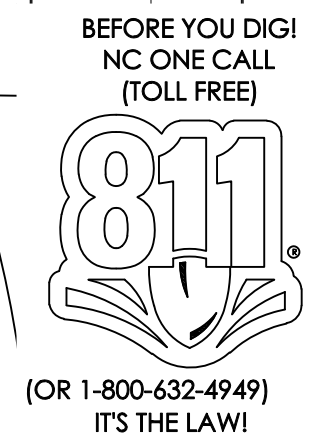
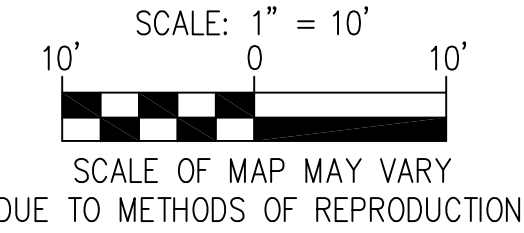


UTILITY CONSTRUCTION
PLANS ONLY



CAP EXISTING 8" GRAVITY
SANITARY SEWER

EXISTING MANHOLE
STA. 8+27
RIM 4.47'
INV. IN -3.62'
INV. OUT -3.62'
(CONTRACTOR SHALL PUMP
AROUND MANHOLE AS
NECESSARY TO FACILITATE
INSTALLATION OF PROPOSED
GRAVITY SANITARY SEWER)



ISLAND GRAVITY SEWER STA. 7+80 TO 8+28

