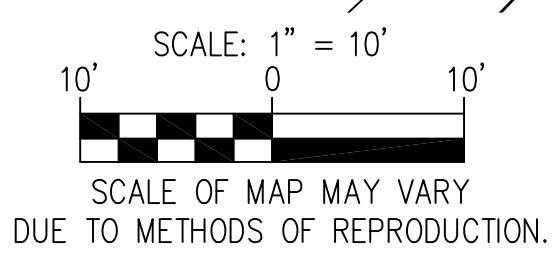
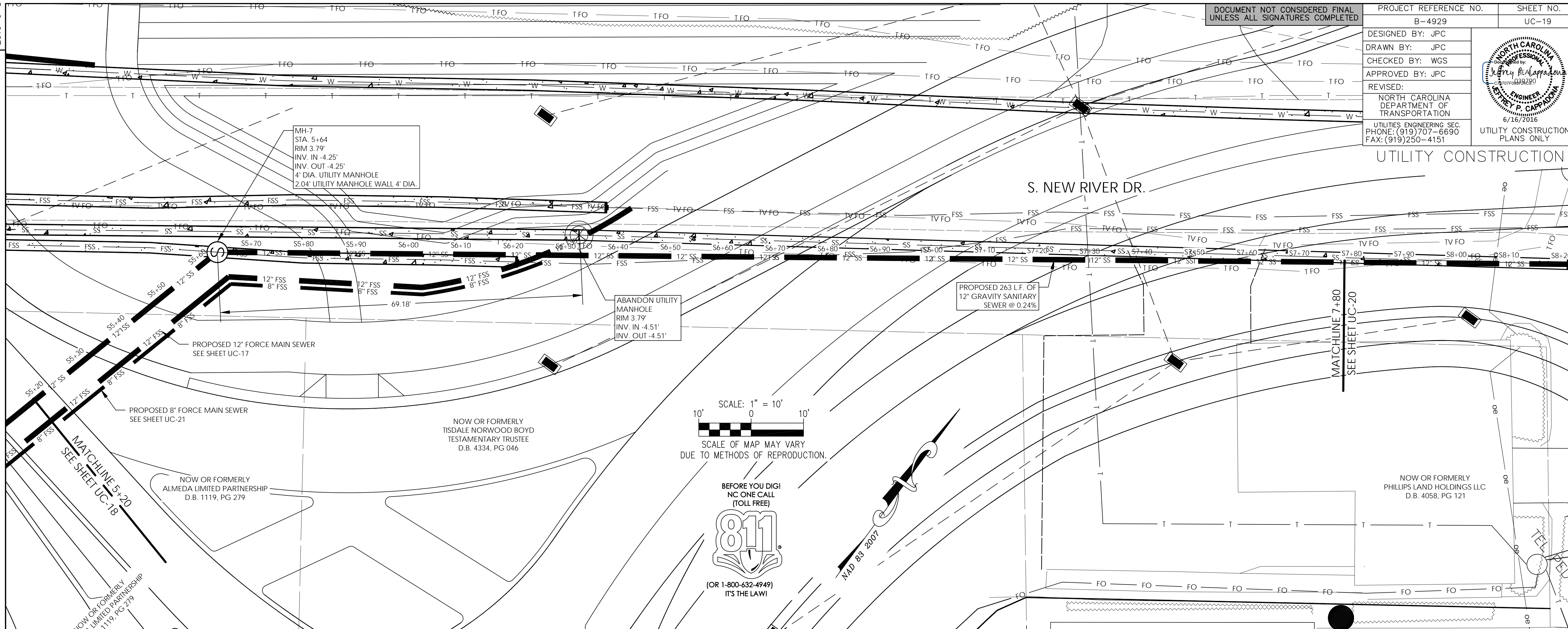


DESIGNED BY: JPC  
 DRAWN BY: JPC  
 CHECKED BY: WGS  
 APPROVED BY: JPC  
 REVISED:  
 NORTH CAROLINA DEPARTMENT OF TRANSPORTATION  
 UTILITIES ENGINEERING SEC.  
 PHONE: (919) 707-6690  
 FAX: (919) 250-4151

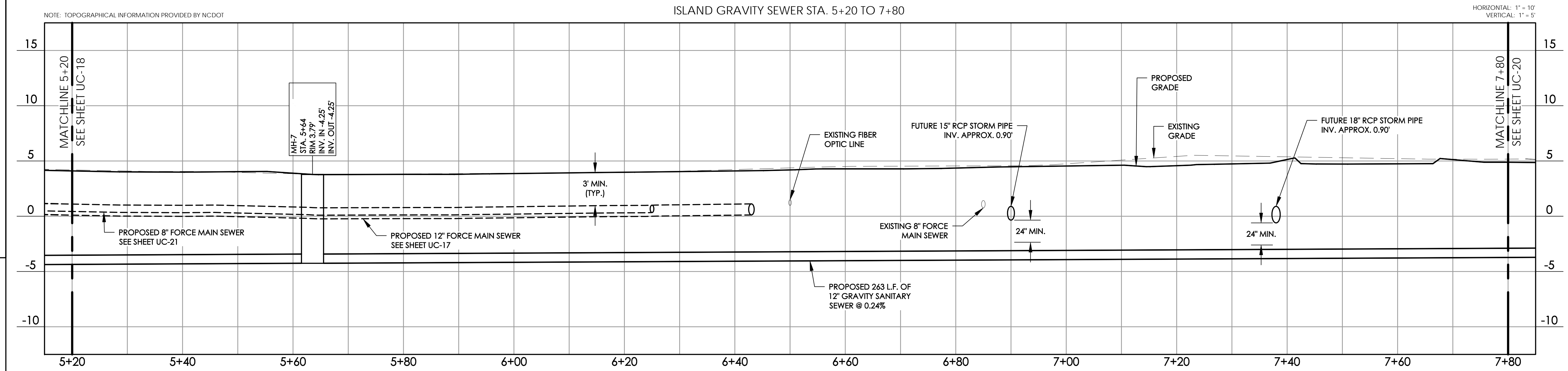


UTILITY CONSTRUCTION PLANS ONLY

REVISIONS



ISLAND GRAVITY SEWER STA. 5+20 TO 7+80



NOTE: TOPOGRAPHICAL INFORMATION PROVIDED BY NCDOT

HORIZONTAL: 1" = 10'  
VERTICAL: 1" = 5'