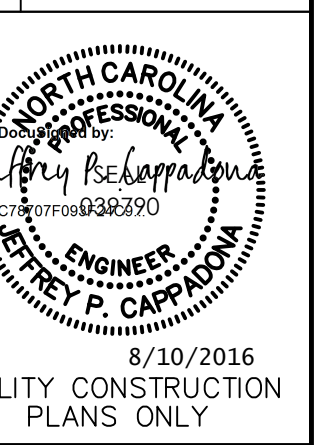
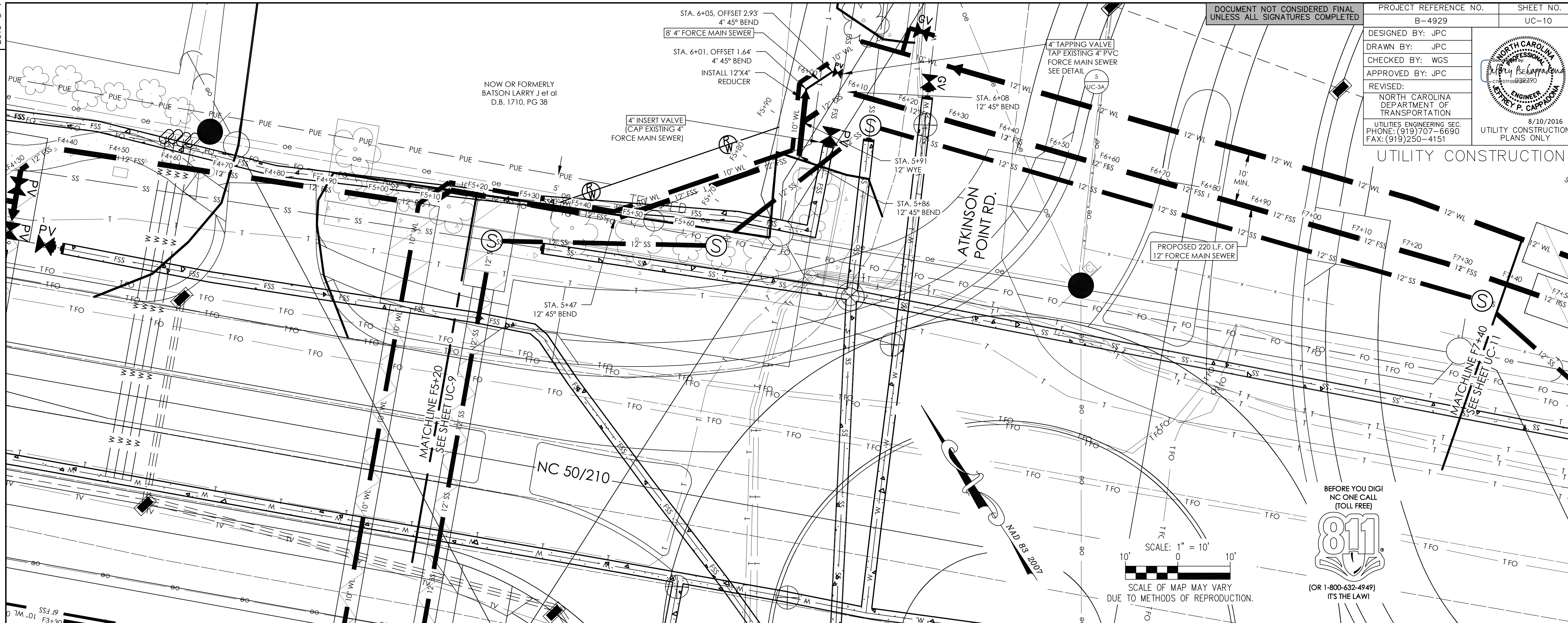


DESIGNED BY: JPC
 DRAWN BY: JPC
 CHECKED BY: WGS
 APPROVED BY: JPC
 REVISED:
 NORTH CAROLINA DEPARTMENT OF TRANSPORTATION
 UTILITIES ENGINEERING SEC.
 PHONE: (919) 707-6690
 FAX: (919) 250-4151



UTILITY CONSTRUCTION PLANS ONLY

REVISIONS



NOW OR FORMERLY BATSON LARRY J et al D.B. 1710, PG 38

4" INSERT VALVE (CAP EXISTING 4" FORCE MAIN SEWER)

8" 4" FORCE MAIN SEWER

STA. 6+05, OFFSET 2.93' 4" 45° BEND

STA. 6+01, OFFSET 1.64' 4" 45° BEND INSTALL 12"X4" REDUCER

4" TAPPING VALVE TAP EXISTING 4" PVC FORCE MAIN SEWER SEE DETAIL

ATKINSON POINT RD.

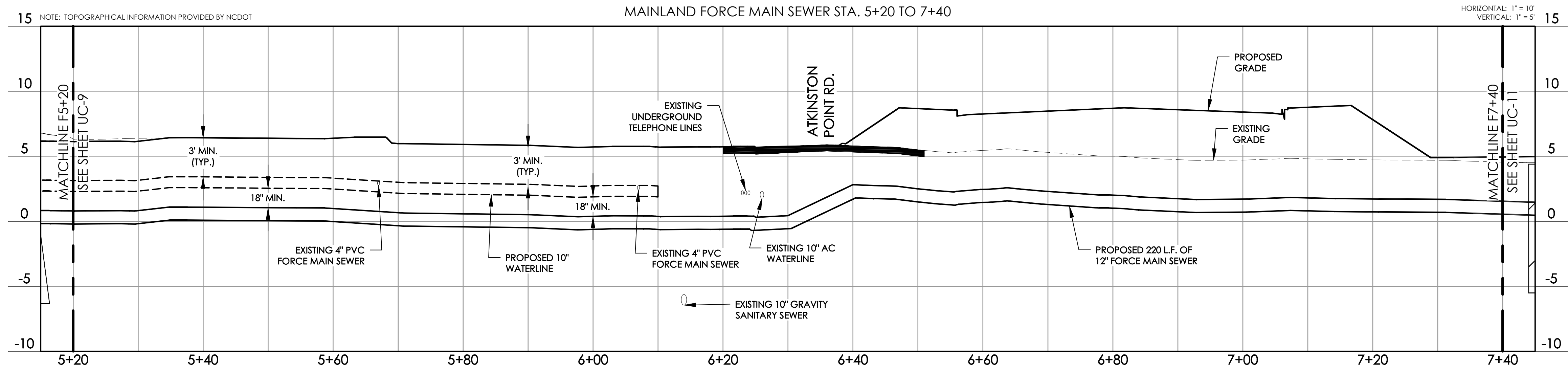
PROPOSED 220 L.F. OF 12" FORCE MAIN SEWER

NC 50/210

M.D. 88 2007

SCALE: 1" = 10'
SCALE OF MAP MAY VARY DUE TO METHODS OF REPRODUCTION.

BEFORE YOU DIG! NC ONE CALL (TOLL FREE) 811 (OR 1-800-632-4949) IT'S THE LAW!



NOTE: TOPOGRAPHICAL INFORMATION PROVIDED BY NCDOT

MAINLAND FORCE MAIN SEWER STA. 5+20 TO 7+40

HORIZONTAL: 1" = 10' VERTICAL: 1" = 5'