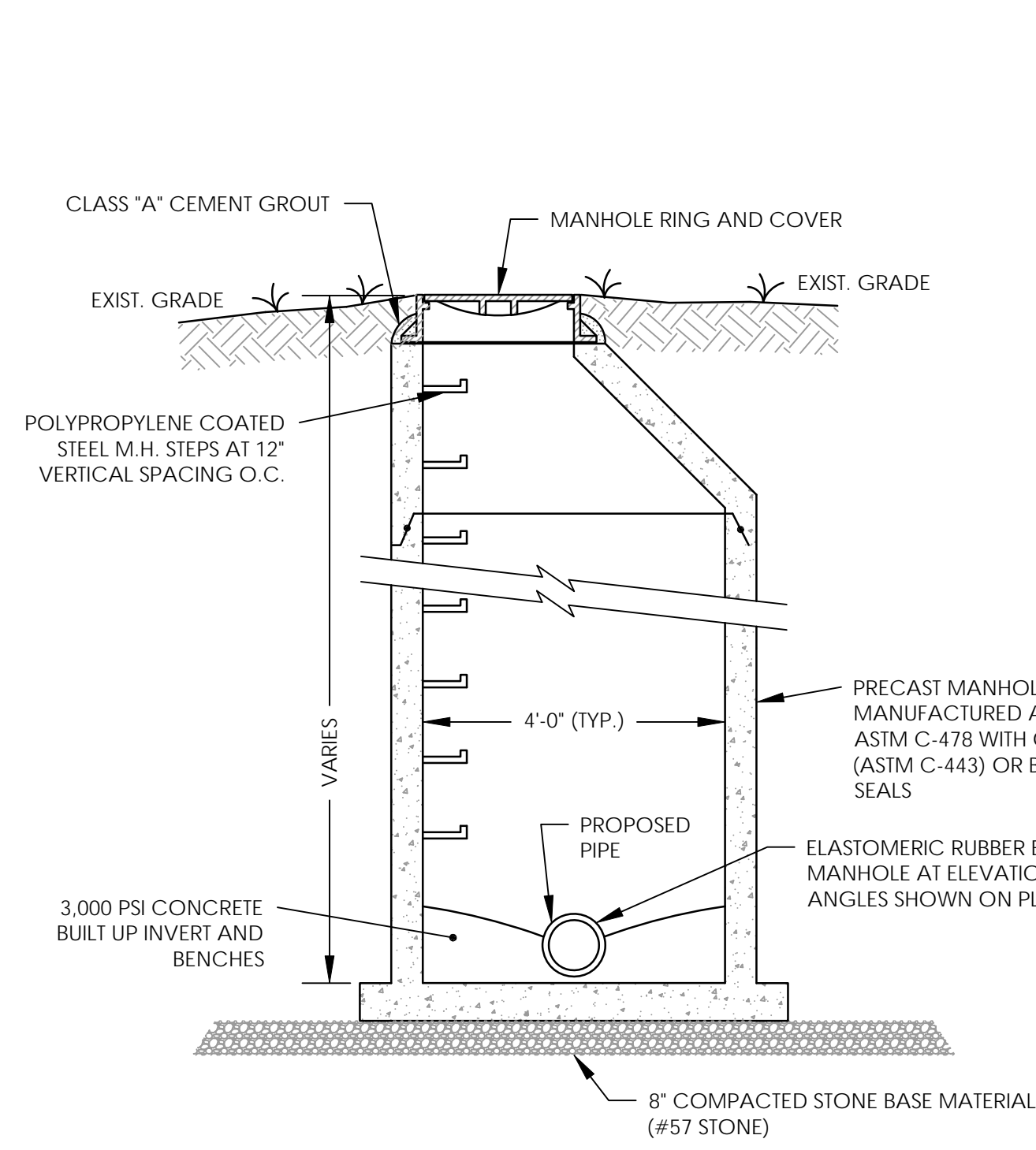
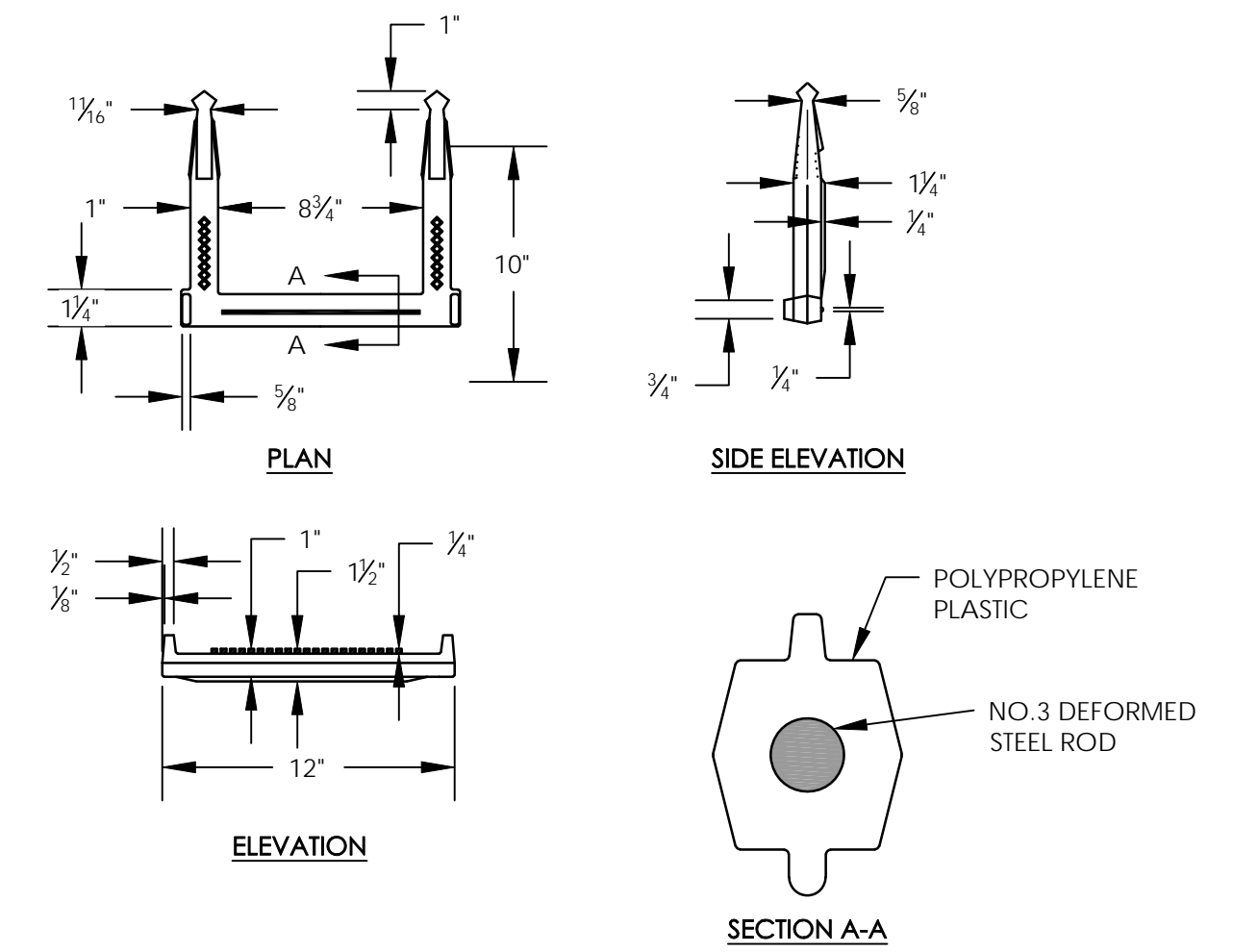
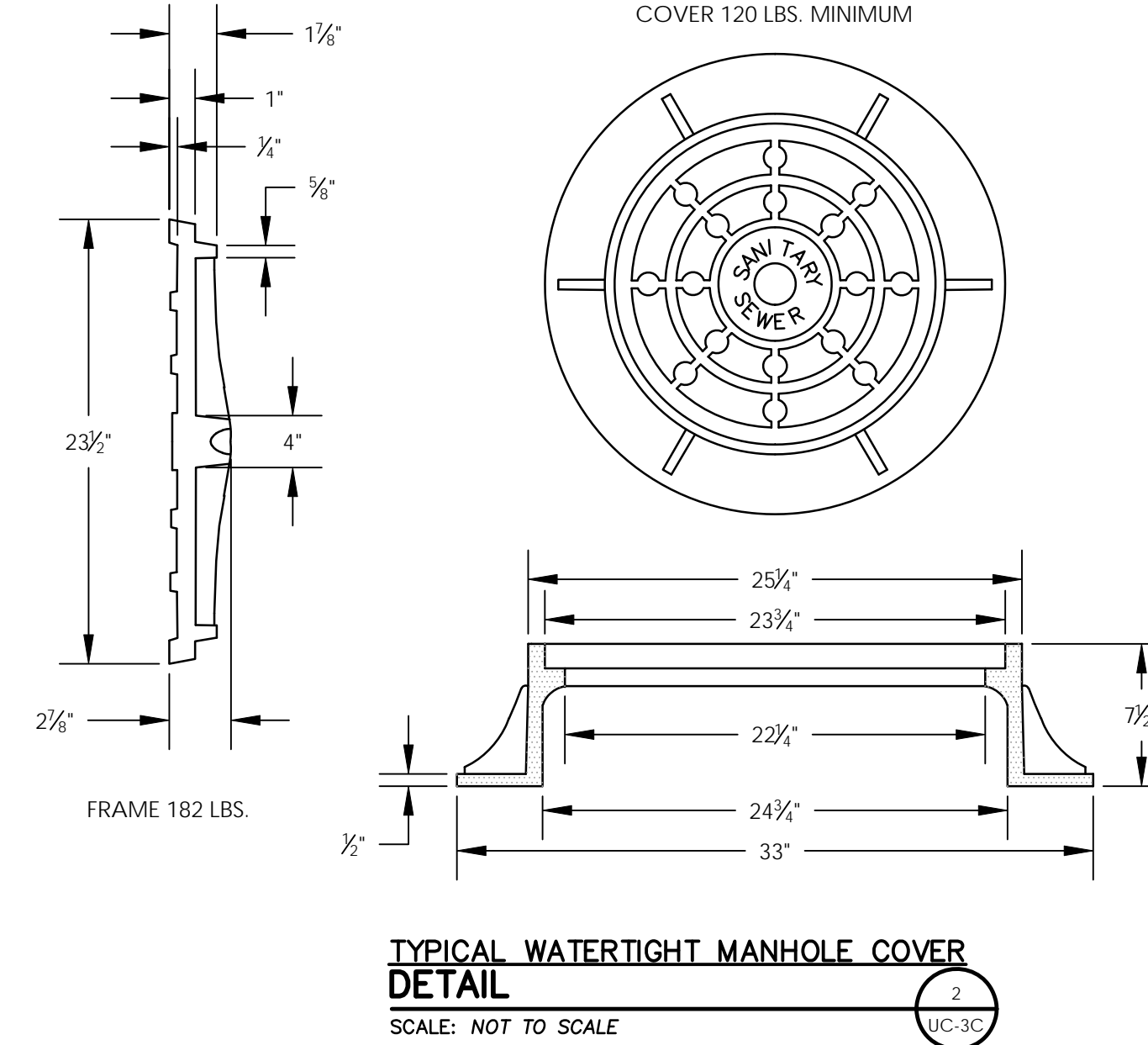
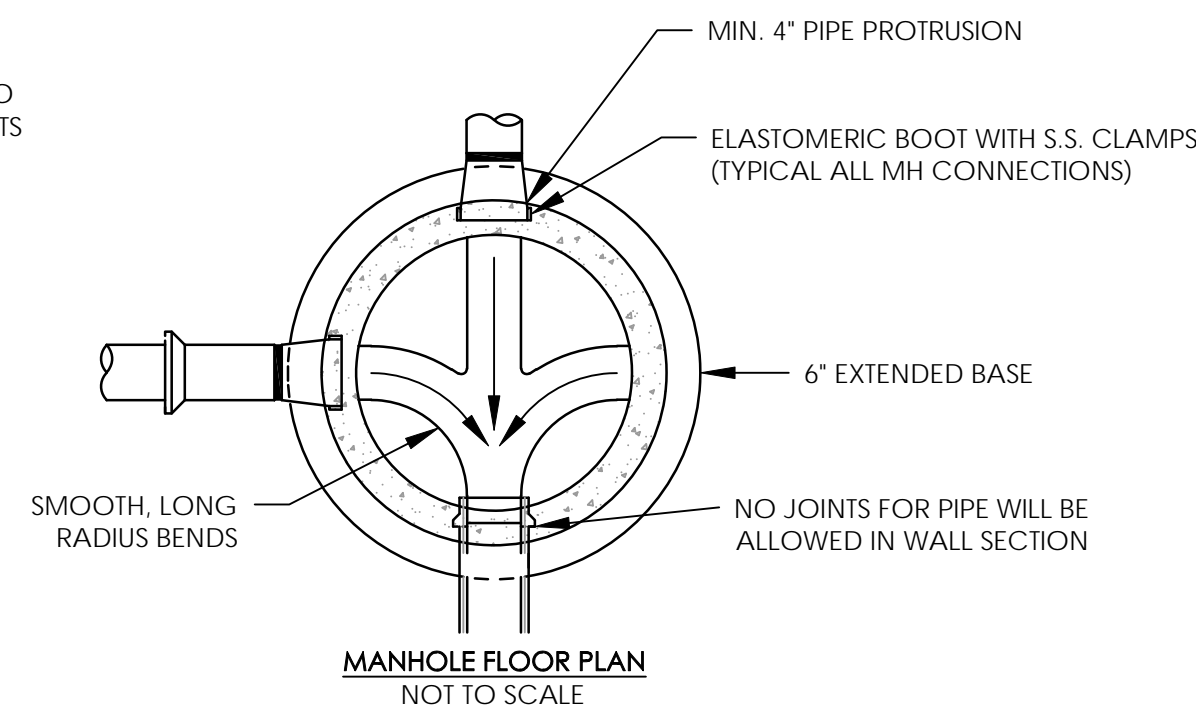
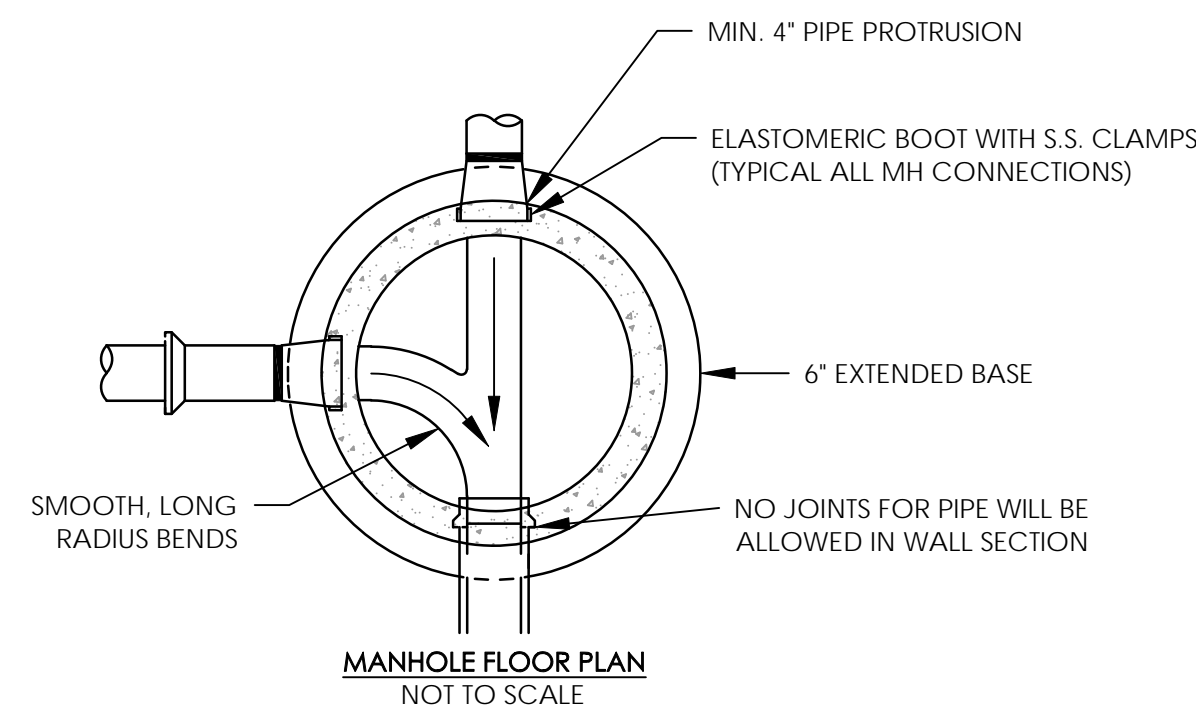


DESIGNED BY: JPC	
DRAWN BY: JPC	
CHECKED BY: WGS	
APPROVED BY: JPC	
REVISED:	
NORTH CAROLINA DEPARTMENT OF TRANSPORTATION UTILITIES ENGINEERING SEC. PHONE: (919) 707-6690 FAX: (919) 250-4151	
UTILITY CONSTRUCTION PLANS ONLY	

UTILITY CONSTRUCTION

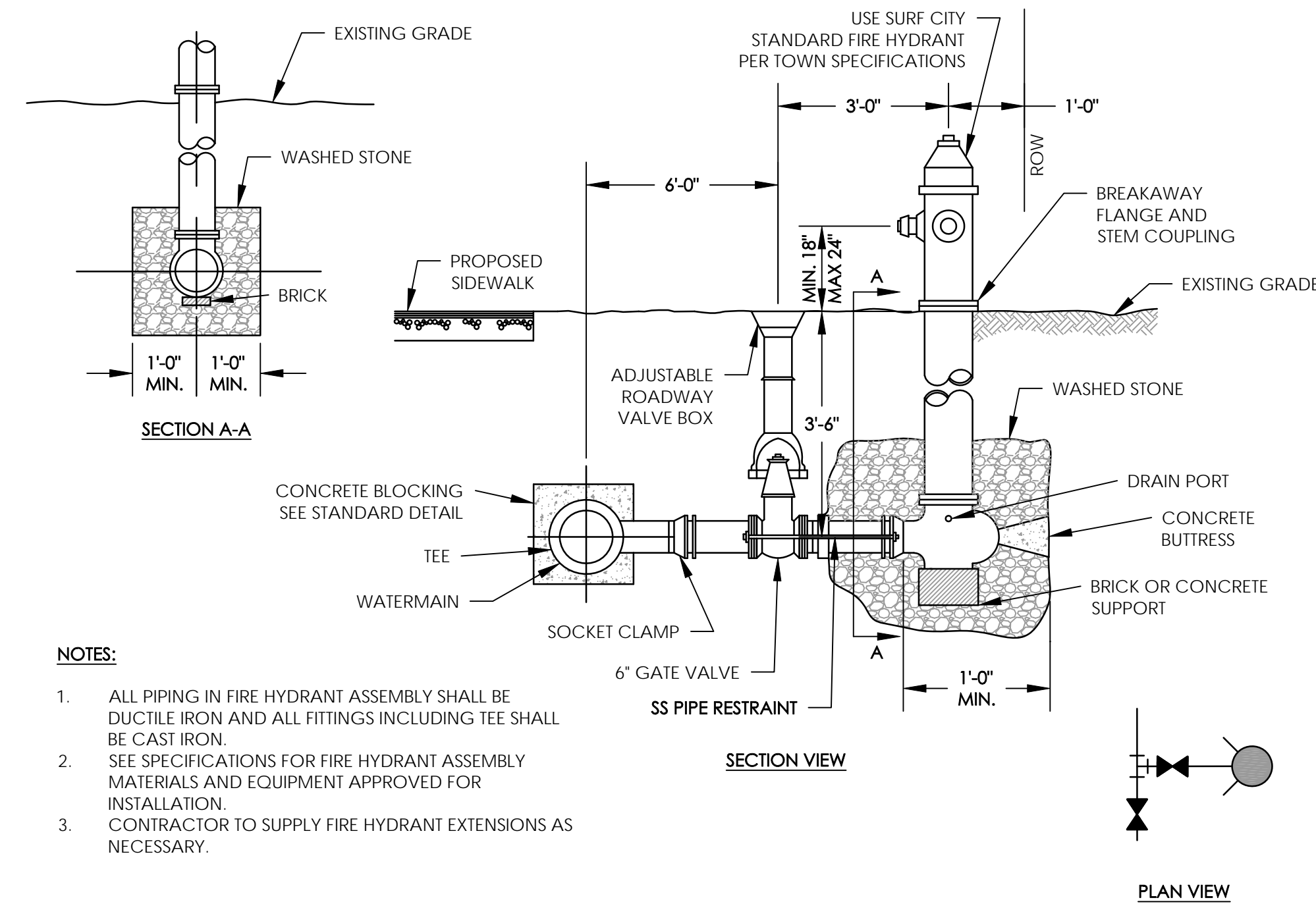


**STANDARD 48" MANHOLE ASSEMBLY  
DETAIL**  
SCALE: NOT TO SCALE



NOTE: FOR MANHOLES AND CATCH BASINS 3'-6" DEPTH AND GREATER, SPACED 12" O.C.

**MANHOLE/CATCH BASIN STEPS  
DETAIL**  
SCALE: NOT TO SCALE



NOTES:

1. ALL PIPING IN FIRE HYDRANT ASSEMBLY SHALL BE DUCTILE IRON AND ALL FITTINGS INCLUDING TEE SHALL BE CAST IRON.
2. SEE SPECIFICATIONS FOR FIRE HYDRANT ASSEMBLY MATERIALS AND EQUIPMENT APPROVED FOR INSTALLATION.
3. CONTRACTOR TO SUPPLY FIRE HYDRANT EXTENSIONS AS NECESSARY.

**STANDARD FIRE HYDRANT ASSEMBLY  
DETAIL**  
SCALE: NOT TO SCALE

REVISIONS