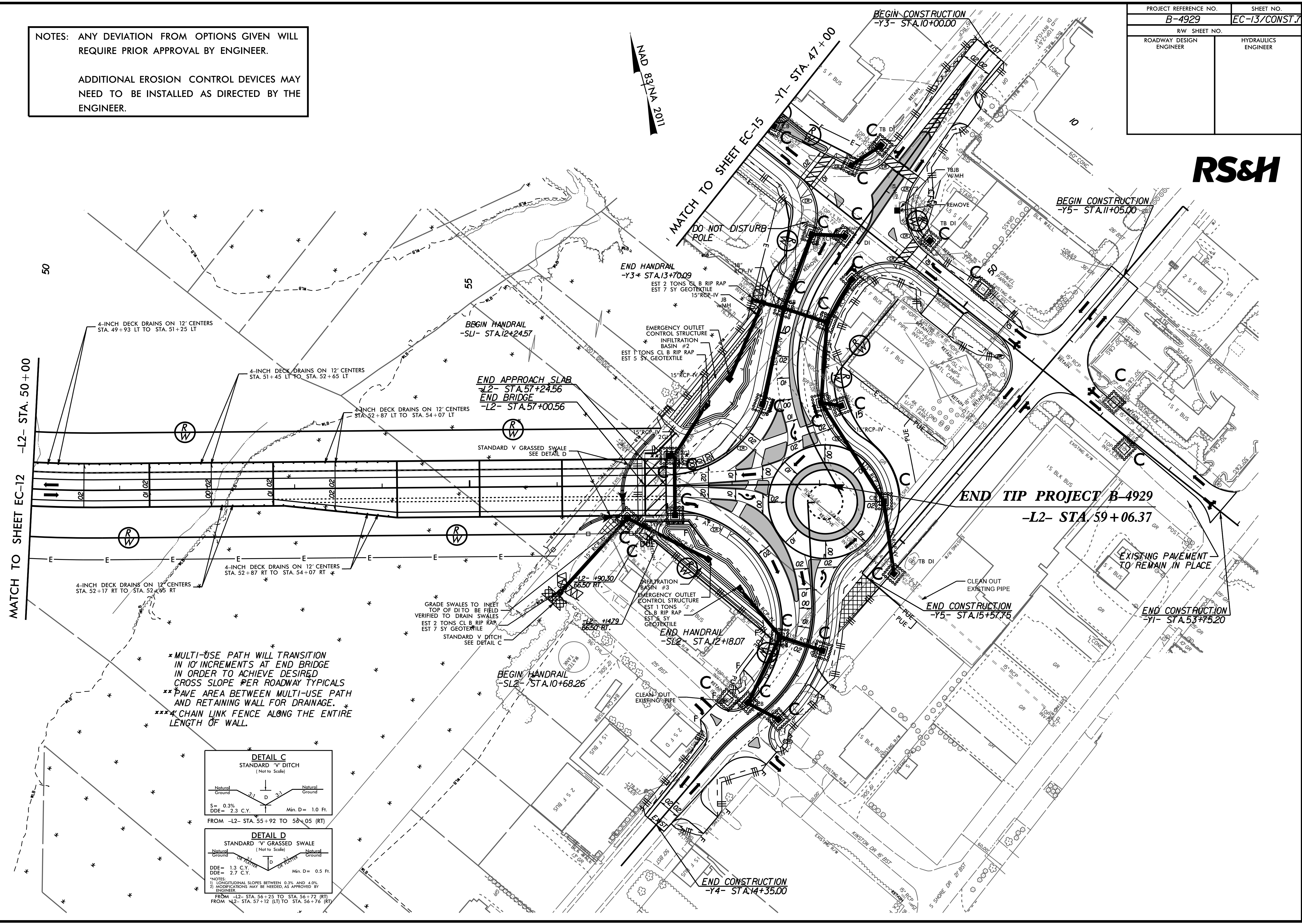
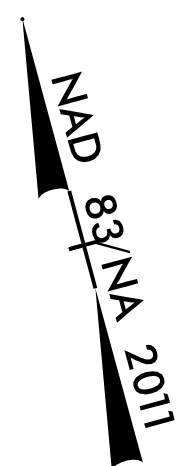


PROJECT REFERENCE NO.	SHEET NO.
B-4929	EC-13/CONST.7
RW SHEET NO.	
ROADWAY DESIGN ENGINEER	HYDRAULICS ENGINEER

**RS&H**

NOTES: ANY DEVIATION FROM OPTIONS GIVEN WILL REQUIRE PRIOR APPROVAL BY ENGINEER.

ADDITIONAL EROSION CONTROL DEVICES MAY NEED TO BE INSTALLED AS DIRECTED BY THE ENGINEER.



MATCH TO SHEET EC-12 -L2- STA. 50+00

BEGIN CONSTRUCTION  
-Y3- STA. 10+00.00

BEGIN CONSTRUCTION  
-Y5- STA. 11+05.00

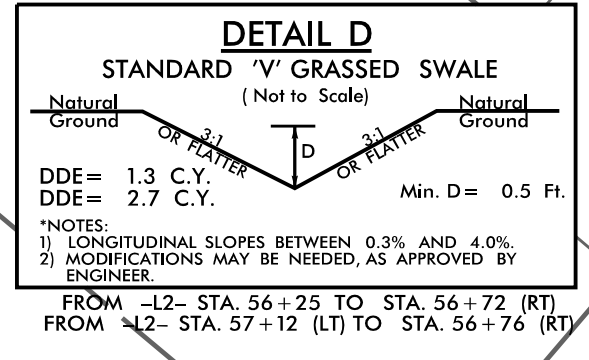
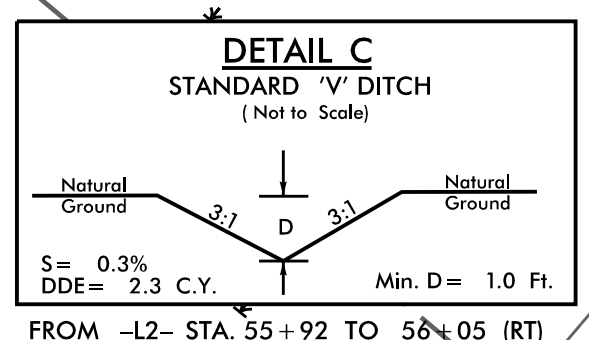
END TIP PROJECT B-4929  
-L2- STA. 59+06.37

END CONSTRUCTION  
-Y5- STA. 15+57.76

END CONSTRUCTION  
-Y1- STA. 53+75.20

END CONSTRUCTION  
-Y4- STA. 14+35.00

- \* MULTI-USE PATH WILL TRANSITION IN 10' INCREMENTS AT END BRIDGE IN ORDER TO ACHIEVE DESIRED CROSS SLOPE PER ROADWAY TYPICALS
- \*\* PAVE AREA BETWEEN MULTI-USE PATH AND RETAINING WALL FOR DRAINAGE.
- \*\*\* CHAIN LINK FENCE ALONG THE ENTIRE LENGTH OF WALL.



\*NOTES:  
1) LONGITUDINAL SLOPES BETWEEN 0.3% AND 4.0%  
2) MODIFICATIONS MAY BE NEEDED, AS APPROVED BY ENGINEER.

REVISIONS

4/1/2016 Environmental\Design\Plan Sheets\B4929\_EC.psh.13.dgn