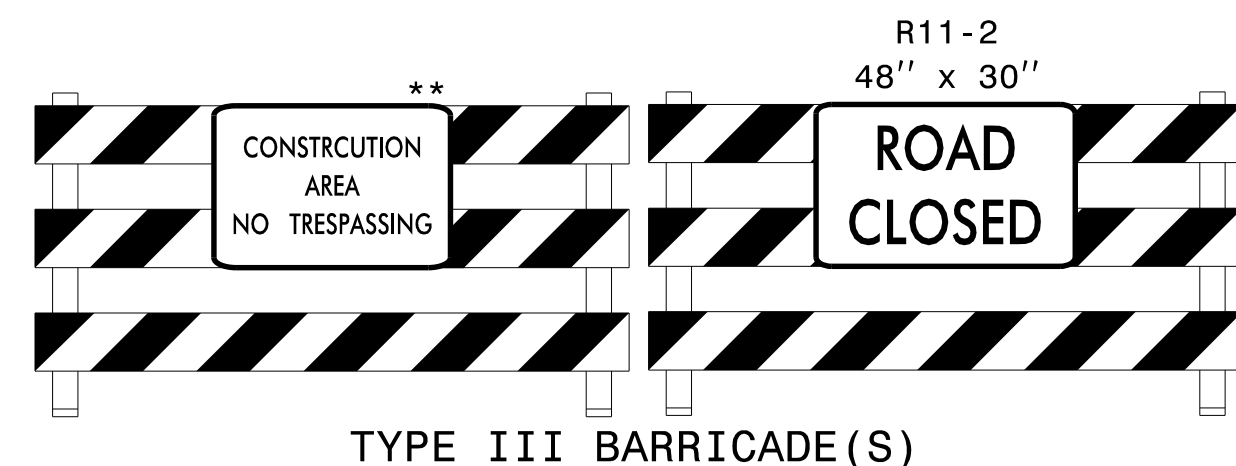


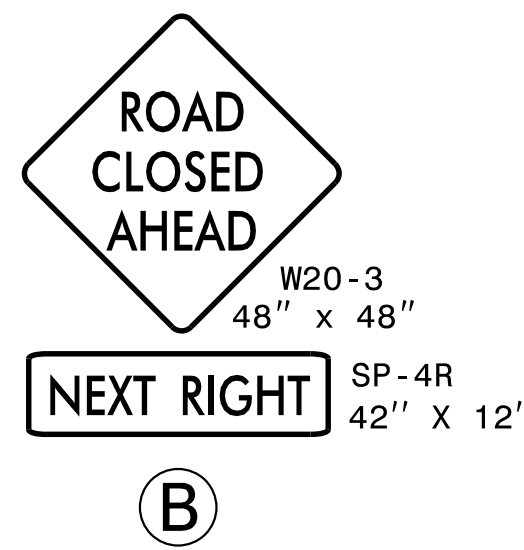
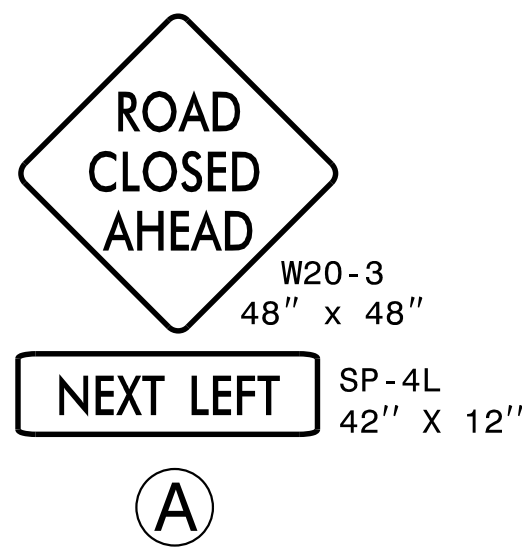
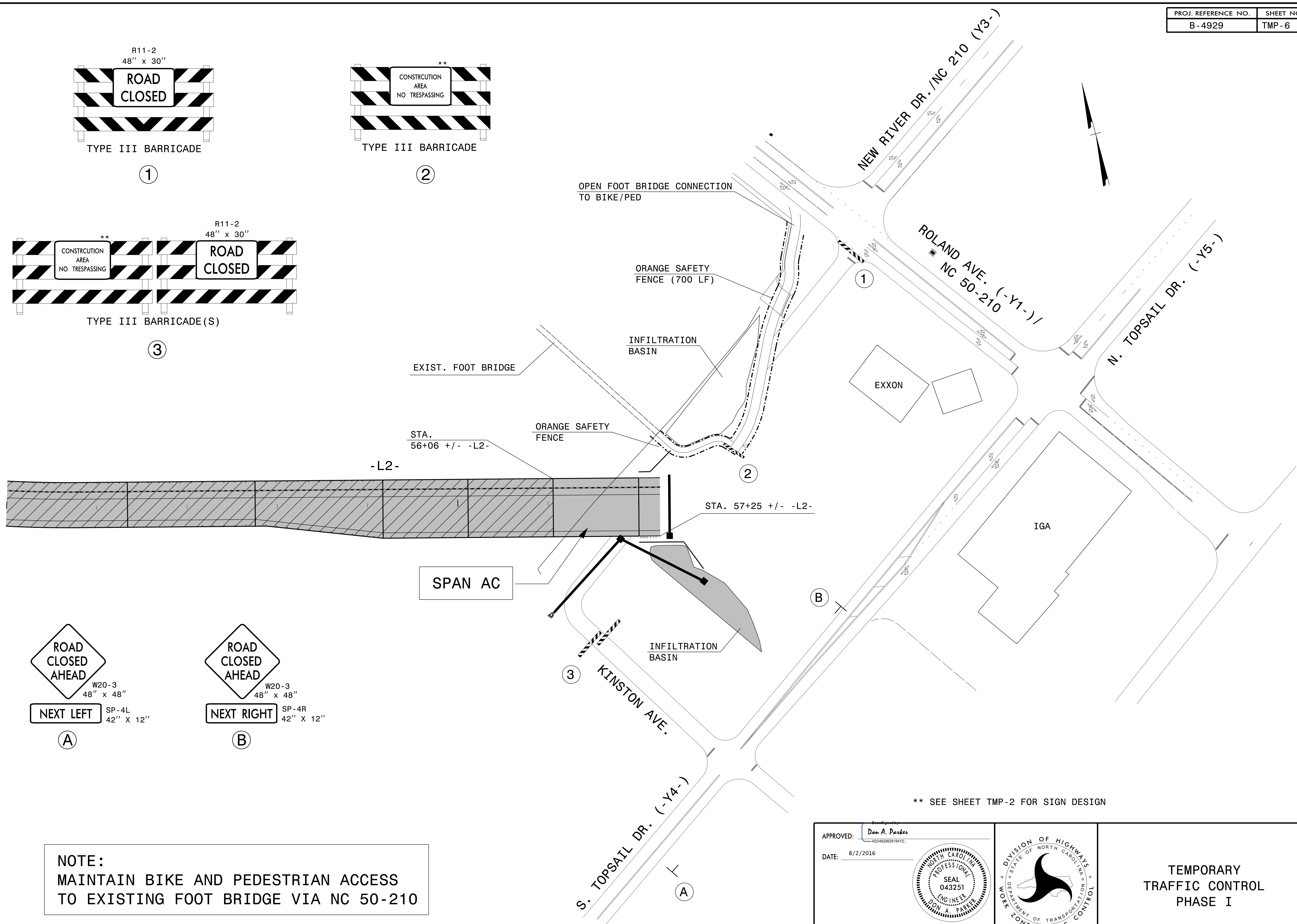
①



②



③



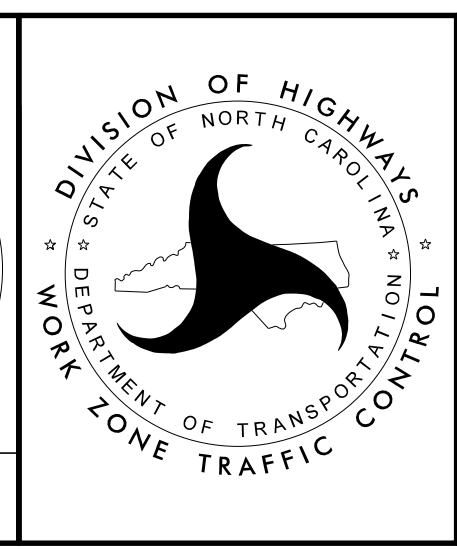
**NOTE:**  
MAINTAIN BIKE AND PEDESTRIAN ACCESS  
TO EXISTING FOOT BRIDGE VIA NC 50-210

\*\* SEE SHEET TMP-2 FOR SIGN DESIGN

APPROVED: *Don A. Parker*  
DATE: 8/2/2016

SEAL  
043251  
ENGINEER  
DON A. PARKER

DOCUMENT NOT CONSIDERED FINAL  
UNLESS ALL SIGNATURES COMPLETED



TEMPORARY  
TRAFFIC CONTROL  
PHASE I

8/2/2016 P:\TIP\Projects-B\B4929\TrafficControl\TCP\B4929\_TC\_TMP\_06.dgn User:sngrreen