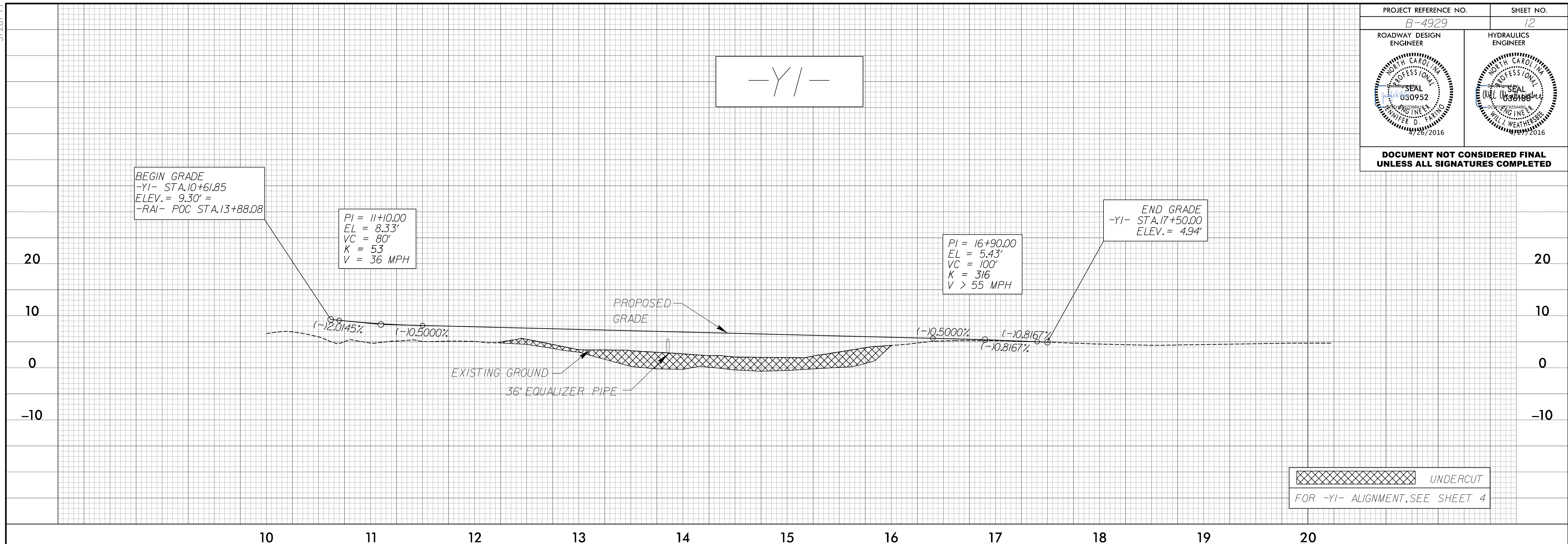


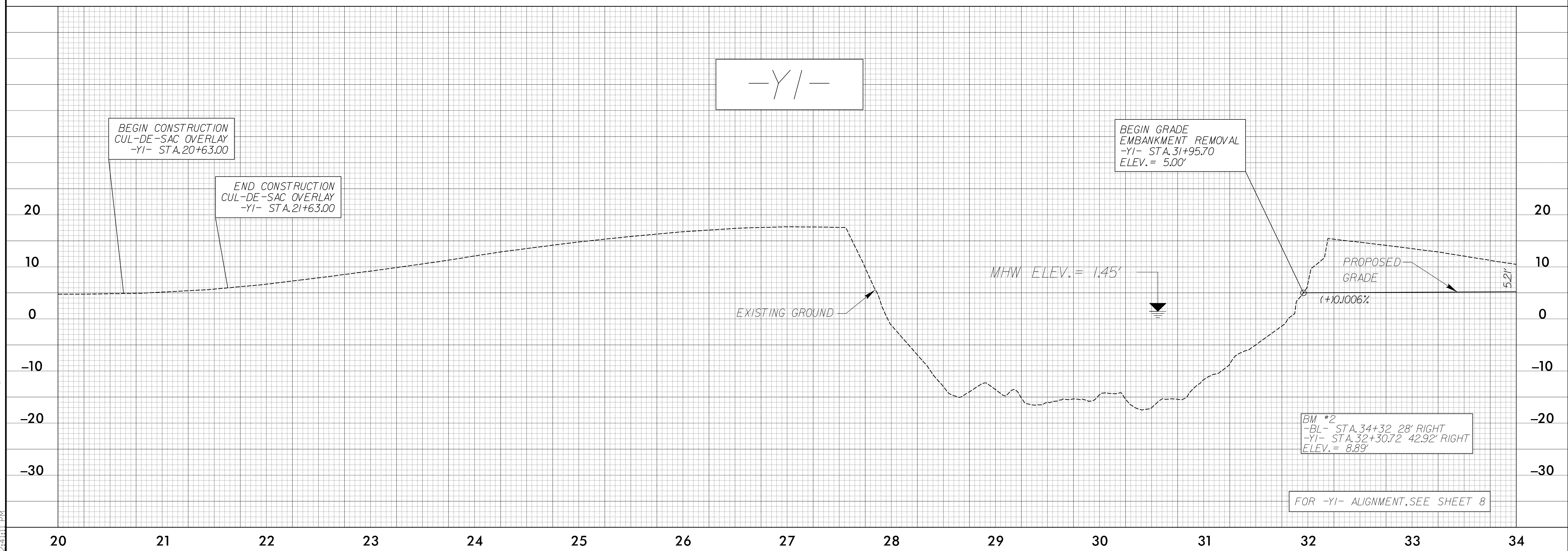
5/28/16

PROJECT REFERENCE NO. B-4929	SHEET NO. 12
ROADWAY DESIGN ENGINEER	HYDRAULICS ENGINEER

**DOCUMENT NOT CONSIDERED FINAL
UNLESS ALL SIGNATURES COMPLETED**



UNDERCUT
FOR -YI- ALIGNMENT, SEE SHEET 4



BM #2
-BL- STA. 34+32 28' RIGHT
-YI- STA. 32+30.72 42.92' RIGHT
ELEV. = 8.89'

FOR -YI- ALIGNMENT, SEE SHEET 8

4/28/2016
 C:\Users\perry\OneDrive\Documents\B4929_Rdy_pfl_12.dgn
 2:41:11 PM