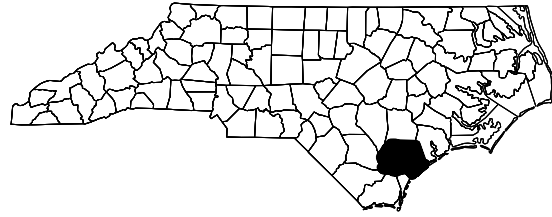


STATE OF NORTH CAROLINA
DIVISION OF HIGHWAYS

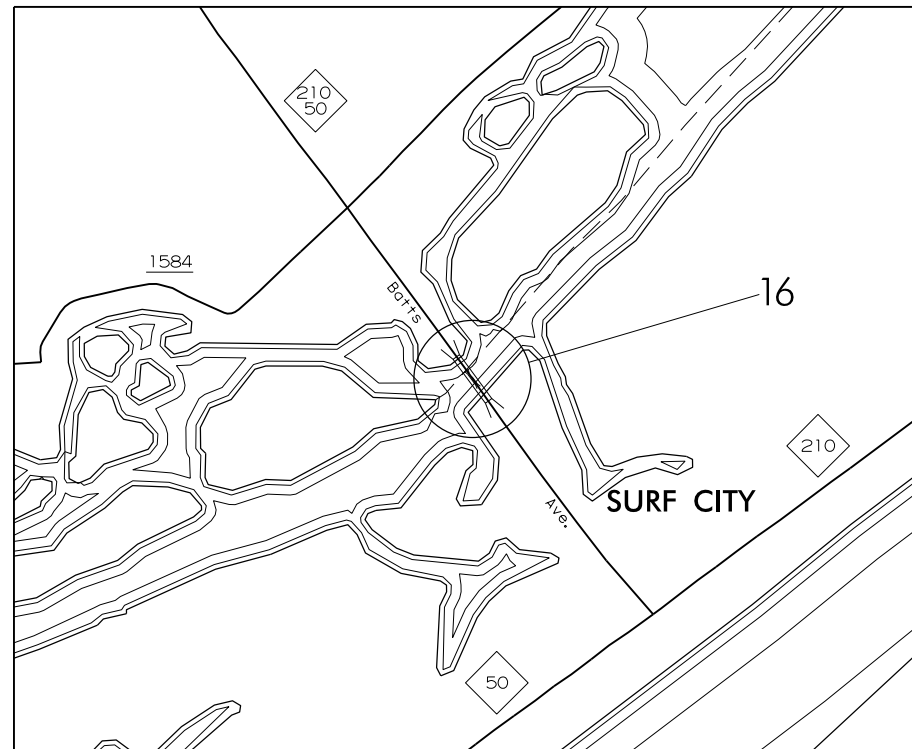
PENDER COUNTY



STATE	STATE PROJECT REFERENCE NO.	SHEET NO.	TOTAL SHEETS
N.C.	-	1	
STATE PROJ. NO.	F.A. PROJ. NO.	DESCRIPTION	
15B.13.34	-	P.E.	
15B.13.34	-	CONST.	

LOCATION: PENDER COUNTY:
BRIDGE #16 ON NC50/NC210 OVER THE INTRACOASTAL WATERWAY

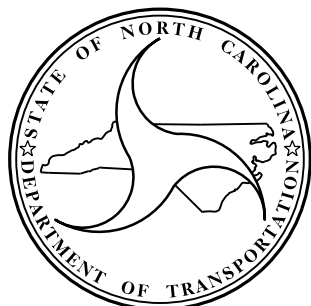
TYPE OF WORK: REPLACEMENT OF EXISTING FENDER SYSTEM



VICINITY MAP - PENDER CO.

WBS: 15B.13.34

CONTRACT:



DESIGN DATA

PENDER COUNTY
#16 ADT 2012 = 11,000

PROJECT LENGTH

PENDER COUNTY
#30 = 0.09 MILES

Prepared in the Office of:
**DEPARTMENT OF TRANSPORTATION
DIVISION OF HIGHWAYS**
STRUCTURES MANAGEMENT UNIT - PRESERVATION & REPAIR GROUP
1000 BIRCH RIDGE DR. RALEIGH, N.C. 27610

TIMOTHY M. SHERRILL, P.E.
PROJECT ENGINEER

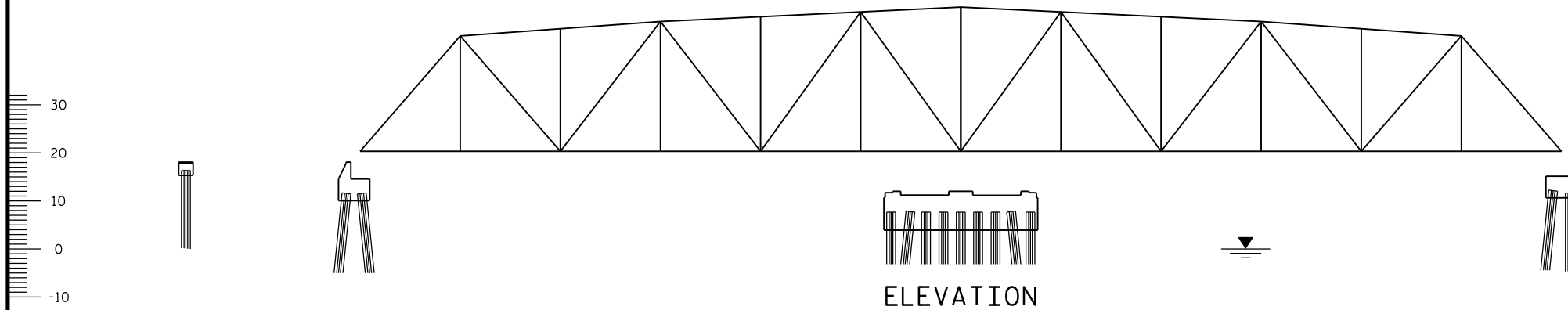
2012 STANDARD SPECIFICATIONS

LETTING DATE:
AUGUST 4, 2015

DocuSigned by:
William M. Clarke
1EB20855-5555-4000-9000-000000000000
NORTH CAROLINA
PROFESSIONAL
SEAL
40257
ENGINEER
W. MATTHEW CLARKE
7/24/2015
W. MATTHEW CLARKE, P.E.
PROJECT DESIGN ENGINEER

GENERAL NOTES:

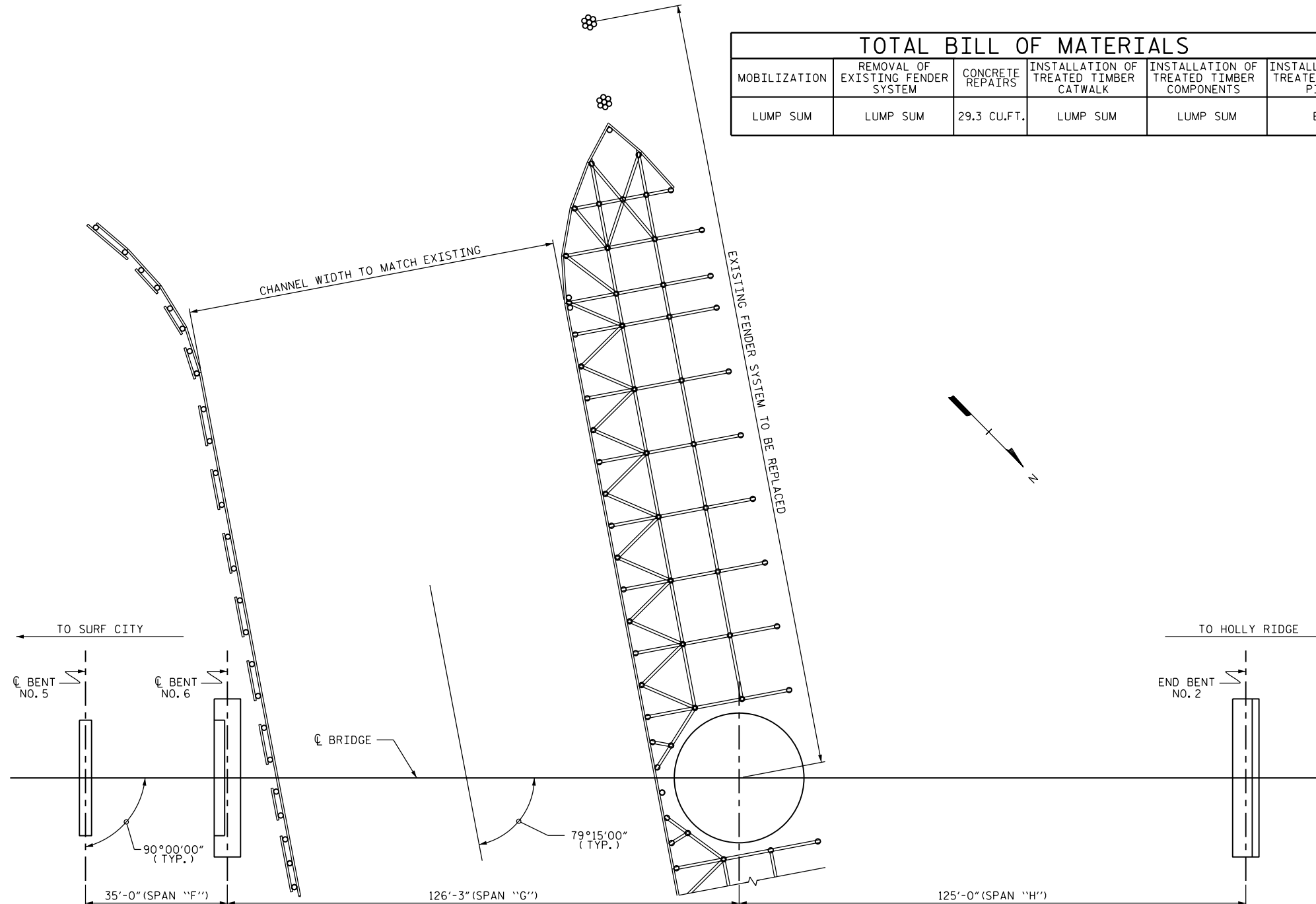
- FOR COORDINATION WITH THE U.S. COAST GUARD, SEE SPECIAL PROVISIONS.
- FOR NAVIGATIONAL LIGHTS, SEE SPECIAL PROVISIONS FOR COORDINATION WITH THE U.S. COAST GUARD.
- FOR SECURING OF VESSELS, SEE SPECIAL PROVISIONS.
- FOR MAINTENANCE OF WATER TRAFFIC, SEE SPECIAL PROVISIONS.
- FOR CONCRETE REPAIRS, SEE SPECIAL PROVISIONS.
- FOR REMOVAL OF EXISTING FENDER SYSTEM, SEE SPECIAL PROVISIONS.
- FOR PILE DRIVING EQUIPMENT DATA SUBMITTAL, SEE SPECIAL PROVISIONS.
- FOR SUBMITTAL OF WORKING DRAWINGS, SEE SPECIAL PROVISIONS.
- FOR CRANE SAFETY, SEE SPECIAL PROVISIONS.
- FOR WORK IN, OVER OR ADJACENT TO NAVIGABLE WATERS, SEE SPECIAL PROVISIONS.
- FOR WIRE ROPE FOR FENDER SYSTEM, SEE SPECIAL PROVISIONS.
- FOR FENDER REPLACEMENT, SEE SPECIAL PROVISIONS.
- FOR AS-BUILT PLANS, SEE SPECIAL PROVISIONS.
- FOR LOCATION OF NEW FENDER SYSTEM, SEE SPECIAL PROVISIONS.
- ALL BOLTS, WASHER, NUTS, AND ALL OTHER HARDWARE SHALL BE GALVANIZED AND SHALL BE GRADE A-307.
- GALVANIZING SHALL BE DONE IN ACCORDANCE WITH SECTION 1076 OF NCDOT STANDARD SPECIFICATIONS FOR ROAD AND STRUCTURES DATED JANUARY 2012.
- ALL O.G. WASHERS SHALL CONFORM TO ASTM A47 CLASS 30.
- ALL TREATED LUMBER SHALL CONFORM TO SECTION 1082 OF THE STANDARD SPECIFICATIONS OR AS NOTED ON THE PLANS.
- THE CONTRACTOR SHALL RELOCATE THE CLEARANCE MARKER AT BOTH ENDS OF THE FENDER SYSTEM TO THE LOCATION DESIGNATED BY THE ENGINEER.
- THE CONTRACTOR SHALL VISIT THE JOB SITE AND CHECK THE MATERIALS AND THE QUANTITY NEEDED TO COMPLETE ALL THE WORK IN ACCORDANCE WITH THE PLANS, PROJECT SPECIAL PROVISIONS, AND THE NCDOT STANDARD SPECIFICATIONS FOR ROADS AND STRUCTURES DATED JANUARY 2012.
- THE CONTRACTOR SHALL BE RESPONSIBLE FOR FULFILLING ALL THE REQUIREMENTS OF THE NCDOT STANDARD SPECIFICATIONS FOR ROADS AND STRUCTURES DATED JANUARY 2012, EXCEPT AS OTHERWISE NOTED ON THE PLANS AND SPECIAL PROVISIONS.
- AT LOCATIONS WHERE EXISTING AND PROPOSED PILING COINCIDE, SOME OR ALL OF EXISTING PILING MAY BE REQUIRED TO BE FULLY REMOVED. IF THE EXISTING PILING BREAKS UPON INITIAL EXTRACTION, WITH THE ENGINEER'S APPROVAL PROPOSED PILING MAY BE SHIFTED NOMINALLY TO AVOID BROKEN, EXISTING PILES.
- THE PROPOSED FENDER FACE OF NEW FENDER SYSTEM SHALL MATCH THE EXISTING FENDER FACE OF THE EXISTING FENDER SYSTEM. DIMENSIONS SHOWN ON THE PLANS ARE FROM PRELIMINARY FIELD MEASUREMENTS AND SHALL BE FIELD VERIFIED PRIOR TO FABRICATING AND/OR OBTAINING MATERIALS.
- ALL DOME HEAD TIMBER BOLTS SHALL BE TIGHTENED TO FULLY ENGAGE THE O.G. WASHER WITHOUT EXCESSIVE CRUSHING OF THE TIMBER FIBERS.



ELEVATION

TAKEN ALONG ϕ OF BRIDGE

TOTAL BILL OF MATERIALS					
MOBILIZATION	REMOVAL OF EXISTING FENDER SYSTEM	CONCRETE REPAIRS	INSTALLATION OF TREATED TIMBER CATWALK	INSTALLATION OF TREATED TIMBER COMPONENTS	INSTALLATION OF TREATED TIMBER PILES
LUMP SUM	LUMP SUM	29.3 CU.FT.	LUMP SUM	LUMP SUM	EACH



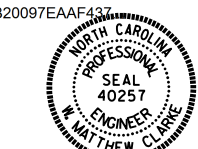
PROJECT NO. 15B.13.34
PENDER COUNTY
 BRIDGE NO. 16

STATE OF NORTH CAROLINA
 DEPARTMENT OF TRANSPORTATION
 RALEIGH

FENDER LAYOUT PLAN

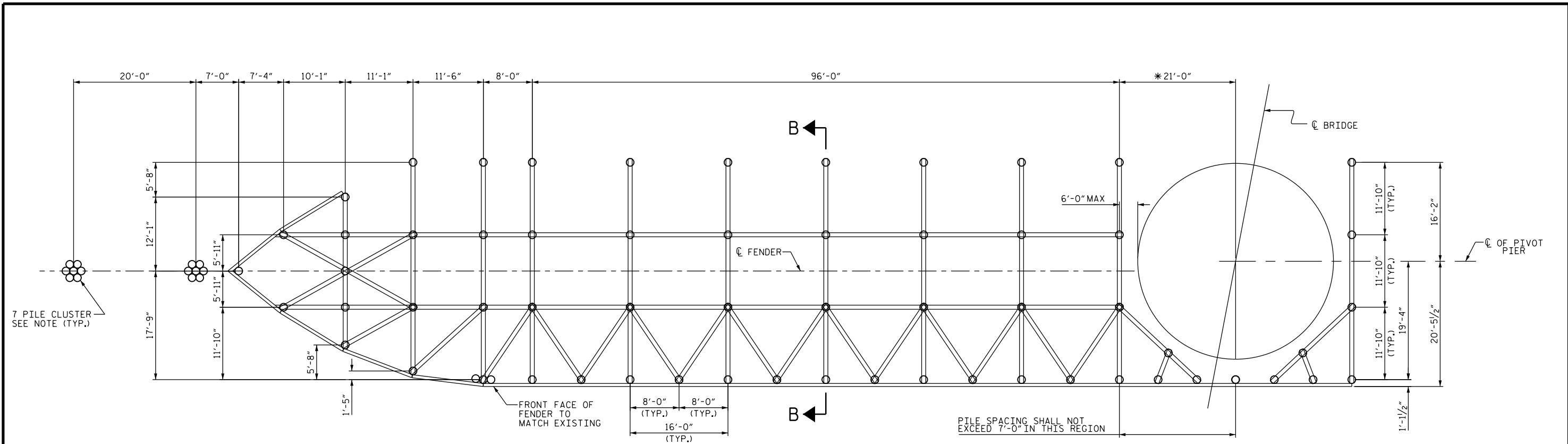
REVISIONS						SHEET NO.
NO.	BY:	DATE:	NO.	BY:	DATE:	F-1
1			3			TOTAL SHEETS
2			4			4

DocuSigned by:
William M. Clarke



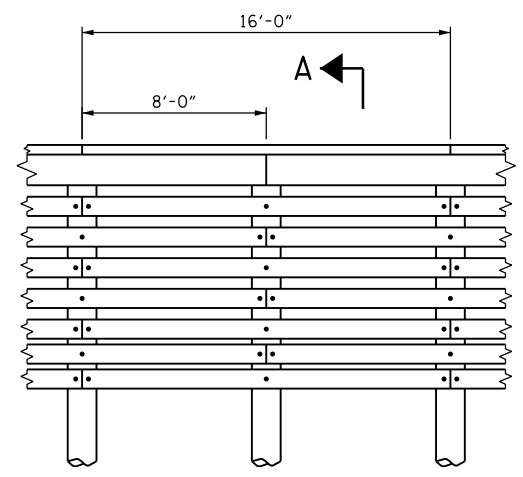
7/24/2015

DRAWN BY : M. A. LEE DATE : 7/2015
 CHECKED BY : W. M. CLARKE DATE : 7/2015

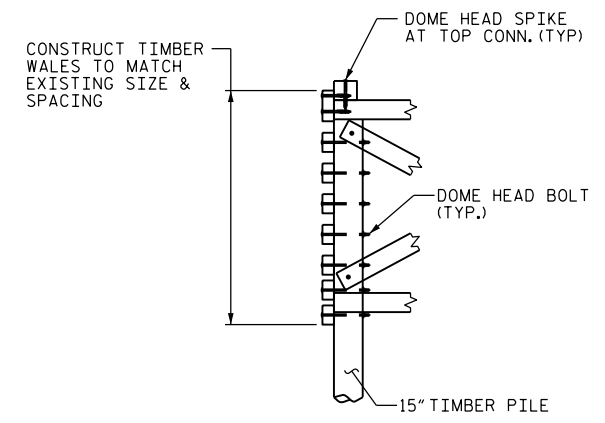


PILE SPACING SHALL NOT EXCEED 7'-0" IN THIS REGION

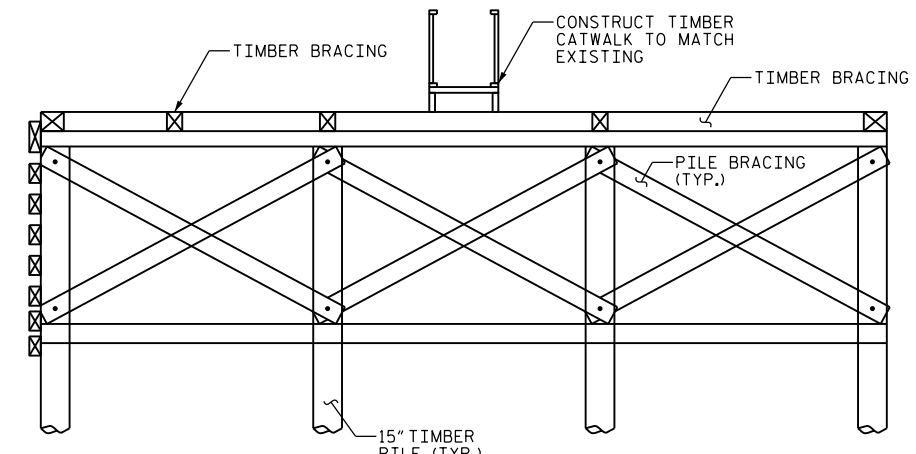
* THE CONTRACTOR SHALL POSITION PROPOSED FENDER SYSTEM TO AVOID INTERFERENCE WITH EXISTING PILES



ELEV. OF MAIN WALL



SECTION A-A

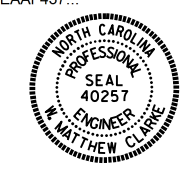


SECTION B-B

- NOTES:**
- WALKWAY AND RAILING TO BE REPLACED TO MATCH EXISTING; NOT SHOWN FOR CLARITY.
 - ALL DIMENSIONS SHOWN ARE NORMAL TO FENDER FACE.
 - THE CONTRACTOR MAY NOMINALLY SHIFT PILES TO AVOID EXISTING PILES THAT CANNOT BE REMOVED DUE TO DAMAGE.
 - ALL MEASUREMENTS TO BE FIELD VERIFIED AND APPROVED BY ENGINEER PRIOR TO CONSTRUCTION.
 - EXISTING MEMBERS MAY BE RETAINED IF NOT DAMAGED PER APPROVAL OF THE ENGINEER.
 - ALL DOME HEADS SHALL BE LOCATED AT THE FRONT FACE OF THE FENDER SYSTEM.
 - STAGGER TIMBER WALES IN THE MAIN WALL SO THAT ALTERNATE JOINTS BREAK EACH PILE.

DRAWN BY : M.A.LEE DATE : 7/2015
 CHECKED BY : W.M.CLARKE DATE : 7/2015

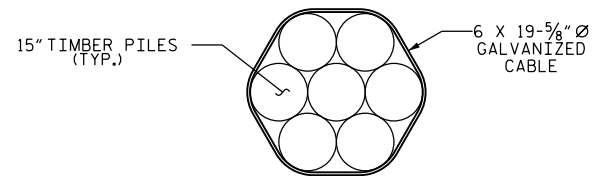
DocuSigned by:
 William M. Clarke
 1EB20097EAAF437...



7/24/2015

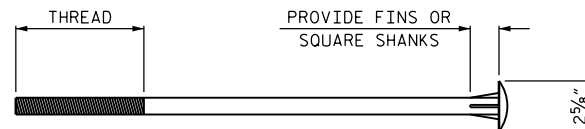
PROJECT NO. 15B.13.34
 PENDER COUNTY
 BRIDGE NO. 16

STATE OF NORTH CAROLINA DEPARTMENT OF TRANSPORTATION RALEIGH					
FENDER & PILE LAYOUT					
REVISIONS					
NO.	BY:	DATE:	NO.	BY:	DATE:
1			3		
2			4		
SHEET NO.					F-2
TOTAL SHEETS					4



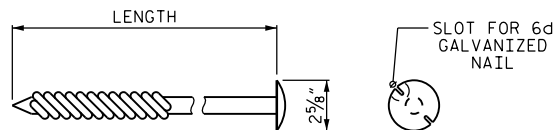
DETAIL OF 7-PILE CLUSTER (DOLPHINS)

SIX (6) OUTSIDE PILES TO BE EQUALLY SPACED ON A 6 FT. CIRCLE AND DRAWN TOGETHER AT TOP, WRAPPED WITH 3 TURNS OF 6 X 19 -5/8" Ø GALVANIZED CABLE AT 1'-1" AND 5'-1" FROM TOP OF CLUSTER. CABLE SHALL BE SECURED WITH 3/8" X 4" GALVANIZED STAPLES AND THREE WIRE CLAMPS AT EACH END.



TYPICAL DOME HEAD TIMBER BOLT

ALL BOLT HEADS MUST BE IN FULL CONTACT WITH THE SURFACE OF THE TIMBER PILES OR WALES.



TYPICAL DOME HEAD DRIVE SPIKE

ALL DRIVE SPIKE HEADS MUST BE IN FULL CONTACT WITH THE SURFACE OF THE TIMBER PILES OR WALES.

PROJECT NO. 15B.13.34
PENDER COUNTY
 BRIDGE NO. 16

DocuSigned by:
William M. Clarke
 1EB20097EAAF437...



7/24/2015

STATE OF NORTH CAROLINA					
DEPARTMENT OF TRANSPORTATION					
RALEIGH					
FENDER SYSTEM					
DETAILS					
REVISIONS					SHEET NO.
NO.	BY:	DATE:	NO.	BY:	DATE:
1			3		
2			4		
TOTAL SHEETS					F-3
					4

DRAWN BY : M.A.LEE DATE : 7/2015
 CHECKED BY : W.M.CLARKE DATE : 7/2015

REPAIR QUANTITY TABLE

REPAIRS PIVOT PIER	QUANTITIES			
	ESTIMATE		ACTUAL	
CONCRETE REPAIRS	AREA SF	VOLUME CF	AREA SF	VOLUME CF
CAP (VERTICAL FACE)	50.3	29.3		
CAP (HORIZONTAL, CORNER)	0.0	0.0		

VALUES IN CHART REPRESENT ESTIMATED REPAIR TOTALS AFTER REMOVAL OF UNSOUND CONCRETE, MIN. OF 1" BEHIND REBAR AND MIN. 2" CL TO SAWCUT. SEE REPAIR DETAILS.

NOTES:

REPAIR LOCATIONS AND ESTIMATE OF QUANTITIES ARE GIVEN WITH THE BEST INFORMATION AVAILABLE. IF ADDITIONAL REPAIRS NOT SHOWN ON THE DRAWINGS ARE DEEMED NECESSARY BY THE INSPECTOR OR ENGINEER THE CONTRACTOR SHALL NOTE ON THE DRAWINGS THE APPROXIMATE LOCATION AND DESCRIPTION OF THE REPAIRS AND ADJUST THE ACTUAL QUANTITIES ENTERED INTO THE REPAIR QUANTITY TABLE.

FOR "CONCRETE REPAIRS", SEE SPECIAL PROVISIONS.

ALL REINFORCING STEEL SHALL BE CONSIDERED INCIDENTAL TO CONCRETE REPAIR.

THE CONTRACTOR SHALL USE ADHESIVELY ANCHORED DOWELS AS INDICATED IN THE PLANS.

DIMENSIONS FOR ADHESIVELY ANCHORED DOWELS ASSUME 9" EMBEDMENT. FOR ACTUAL EMBEDMENT LENGTH, FOLLOW MANUFACTURER'S RECOMMENDATIONS AND ADJUST LENGTH ACCORDINGLY.

CUT AND BEND REINFORCING STEEL IN THE FIELD.

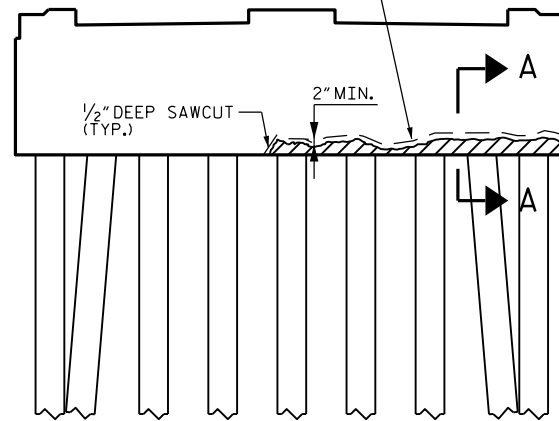
BILL OF MATERIAL

PIVOT PIER REPAIR

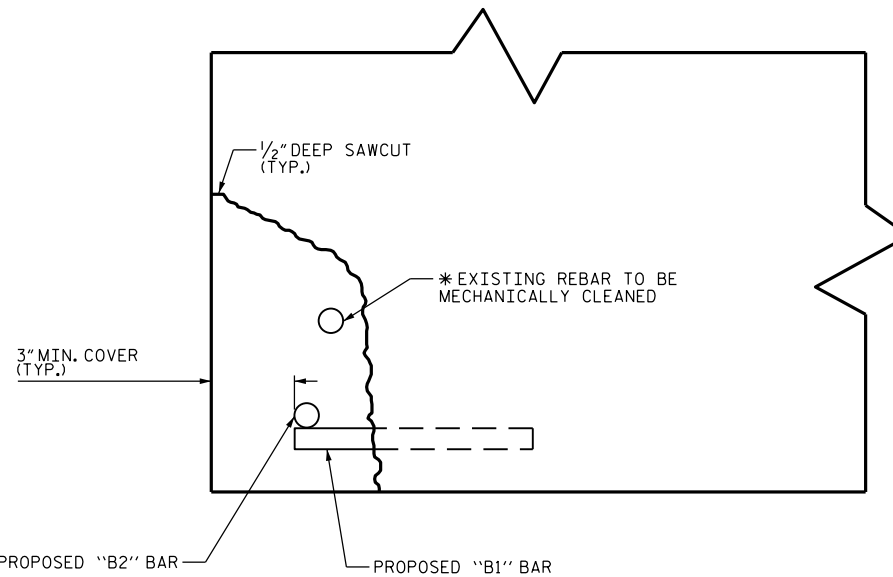
BAR	NO.	SIZE	TYPE	LENGTH	WEIGHT
* B1	18	#4	STR	1'-4"	16
* B2	2	#4	STR	18'-7"	25
* EPOXY COATED REINFORCING STEEL = 41 LBS.					

THE REINFORCING BILL OF MATERIAL QUANTITY IS AN ESTIMATE BASED ON A PROVIDED FIELD SKETCH. THE CONTRACTOR SHALL VERIFY THE CORRECT LENGTH OF REQUIRED REINFORCING STEEL UPON REMOVAL OF UNSOUND CONCRETE.

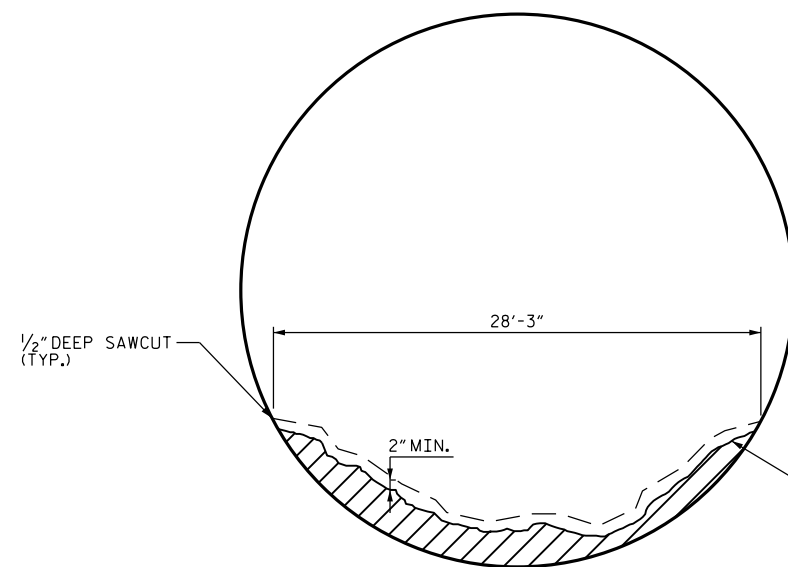
SPALLED, DELAMINATED OR CRACKED CONCRETE (REMOVE UNTIL SOUND CONC. IS FOUND AND A MIN. 1" BEHIND ANY EXPOSED REBAR).



PIER CAP REPAIR (ELEVATION)

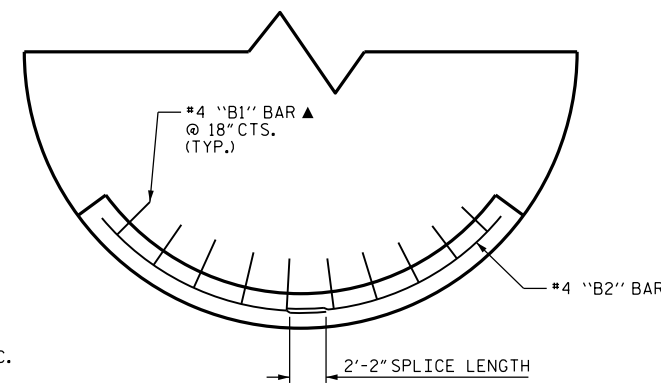


SECTION A-A



PIER CAP REPAIR (PLAN)
BOTTOM OF PIER
PILES NOT SHOWN FOR CLARITY

SPALLED, DELAMINATED OR CRACKED CONCRETE (REMOVE UNTIL SOUND CONC. IS FOUND AND A MIN. 1" BEHIND ANY EXPOSED REBAR).



PROPOSED REPAIR
BOTTOM OF PIER

▲ ADHESIVELY ANCHORED

PROJECT NO. 15B.13.34
PENDER COUNTY
BRIDGE NO. 16

DocuSigned by:
William M. Clarke
1EB20097EAAF437...



7/24/2015

STATE OF NORTH CAROLINA DEPARTMENT OF TRANSPORTATION RALEIGH					
PIVOT PIER REPAIR DETAILS					
REVISIONS					SHEET NO.
NO.	BY:	DATE:	NO.	BY:	DATE:
1			3		
2			4		
TOTAL SHEETS					F-4
4					4

DRAWN BY : H.F. YEUNG DATE : 7/15
CHECKED BY : R.N. WEISZ DATE : 7/15