

**This electronic collection of documents is provided
for the convenience of the user
and is Not a Certified Document –**

**The documents contained herein were originally issued
and sealed by the individuals whose names and license
numbers appear on each page, on the dates appearing
with their signature on that page.**

**This file or an individual page
shall not be considered a certified document.**

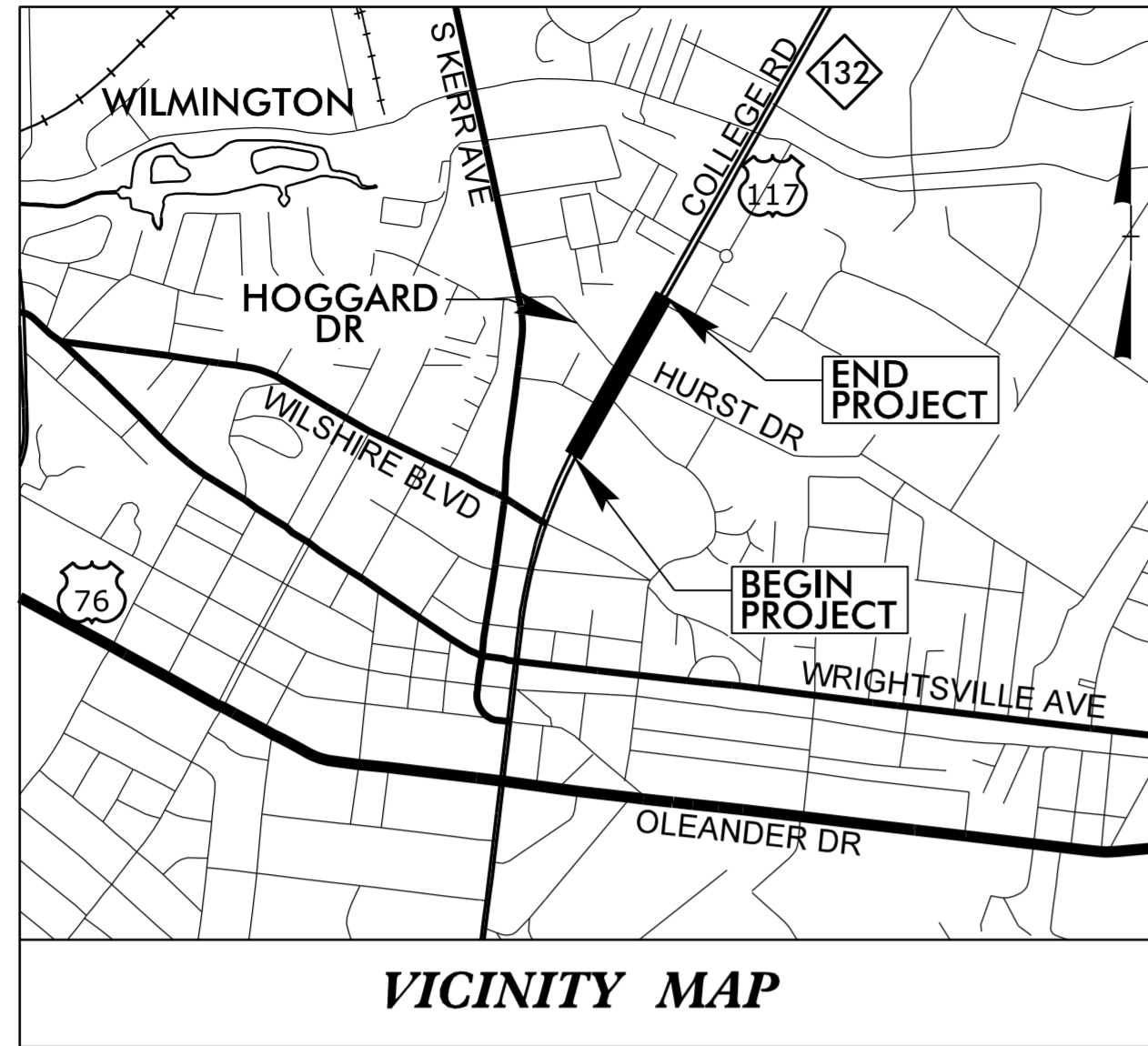
STATE OF NORTH CAROLINA
DIVISION OF HIGHWAYS

T.I.P. NO.	SHEET NO.
W-5203AA	UO-1

UTILITIES BY OTHERS PLANS NEW HANOVER COUNTY

LOCATION: US 117 / NC 132 NB (COLLEGE RD.) MP 4.959 TO MP 5.359
& US 117 / NC 132 SB (COLLEGE RD.) MP 10.198 TO MP 10.598
IN THE CITY OF WILMINGTON

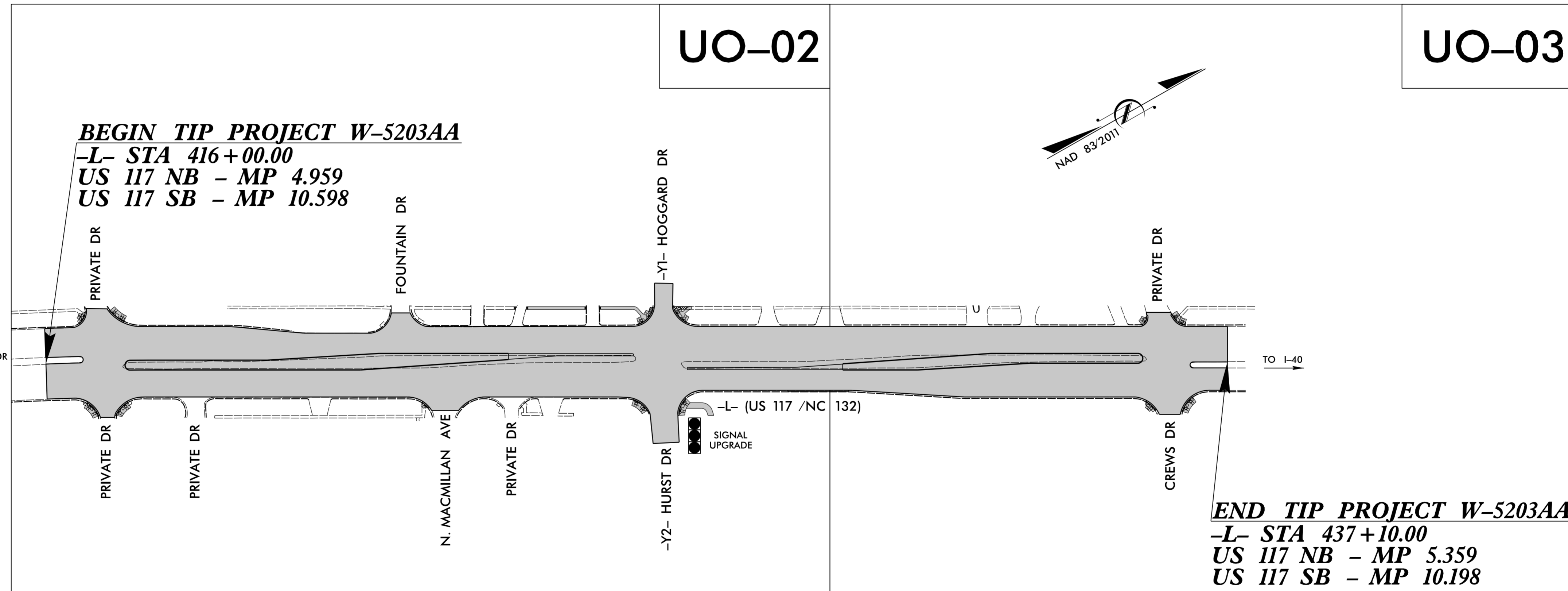
TYPE OF WORK: UTILITIES BY OTHERS



VICINITY MAP

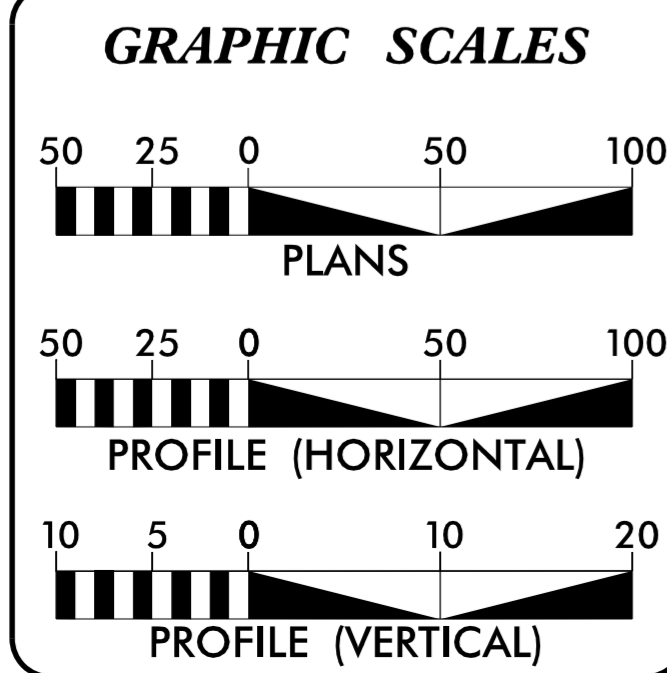
TIP PROJECT: W-5203AA

CONTRACT:



BEGIN TIP PROJECT W-5203AA
-L- STA 416+00.00
US 117 NB - MP 4.959
US 117 SB - MP 10.598

END TIP PROJECT W-5203AA
-L- STA 437+10.00
US 117 NB - MP 5.359
US 117 SB - MP 10.198



INDEX OF SHEETS	
SHEET NO.	DESCRIPTION
UO-1	TITLE SHEET
UO-2	UTILITY BY OTHERS PLAN SHEET
UO-3	UTILITY BY OTHERS PLAN SHEET

UTILITY OWNERS ON PROJECT	
(A)	Duke Energy - Matt Wynne, 919-654-6660
(B)	AT&T - Chris Bentz, 910-619-5500
(C)	Century Link - Tom Denny, 252-622-1413
(D)	Level 3 - Patrick Provost, 720-888-4686
(E)	Crown Castle - Randy Oliver, 724-416-2725
(F)	City of Wilmington (fiber) - Denys Vielkanowitz, 910-341-4676
(G)	Charter Communications - Nick Brown, 910-376-1785
(H)	Time Warner Cable - Robert John, 910-772-5757
(I)	Cape Fear PUA (water) - Jim Tayson, 910-332-6427
(J)	Piedmont Natural Gas - Ross Wilcox, 910-520-2932

PREPARED IN THE OFFICE OF:
DIVISION OF HIGHWAYS
UTILITIES UNIT
UTILITIES ENGINEERING

1555 MAIL SERVICES CENTER
RALEIGH NC 27699-1555
PHONE (919) 707-6690
FAX (919) 250-4151

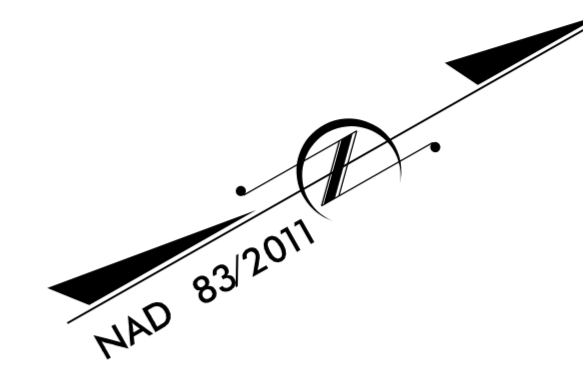
Roger Worthington, P.E. UTILITIES SECTION ENGINEER

Eric Tweed, P.E. UTILITIES PROJECT DESIGNER

5/25/2016 P:\Utilities\Engineering\UBO\Proj\W-5203AA\ut_tsh_U001.psh.dgn -USERNAME-

UTILITIES BY OTHERS

NOTE:
 ALL PROPOSED UTILITY WORK SHOWN ON THIS SHEET WILL BE DONE BY OTHERS. NO PAYMENT WILL BE MADE TO THE CONTRACTOR FOR PROPOSED UTILITY WORK SHOWN ON THIS SHEET.



BEGIN TIP PROJECT W-5203AA
 BEGIN CONSTRUCTION
 -L- POC Sta. 416+00.00
 US 117 NB - MP 4.959
 US 117 SB - MP 10.598

AT&T TO RELOCATE 200PR DURING CONSTRUCTION OF STORM DRAINAGE.
 CONTRACTOR TO COORDINATE WITH AT&T. SEE SPECIAL PROVISIONS.

TWC CATV TO BE RELOCATED

BEGIN CONSTRUCTION
 -YI- POT Sta. 12+70.00

-YI- PT Sta. 12+71.41

-YI- POT Sta. 10+00.00

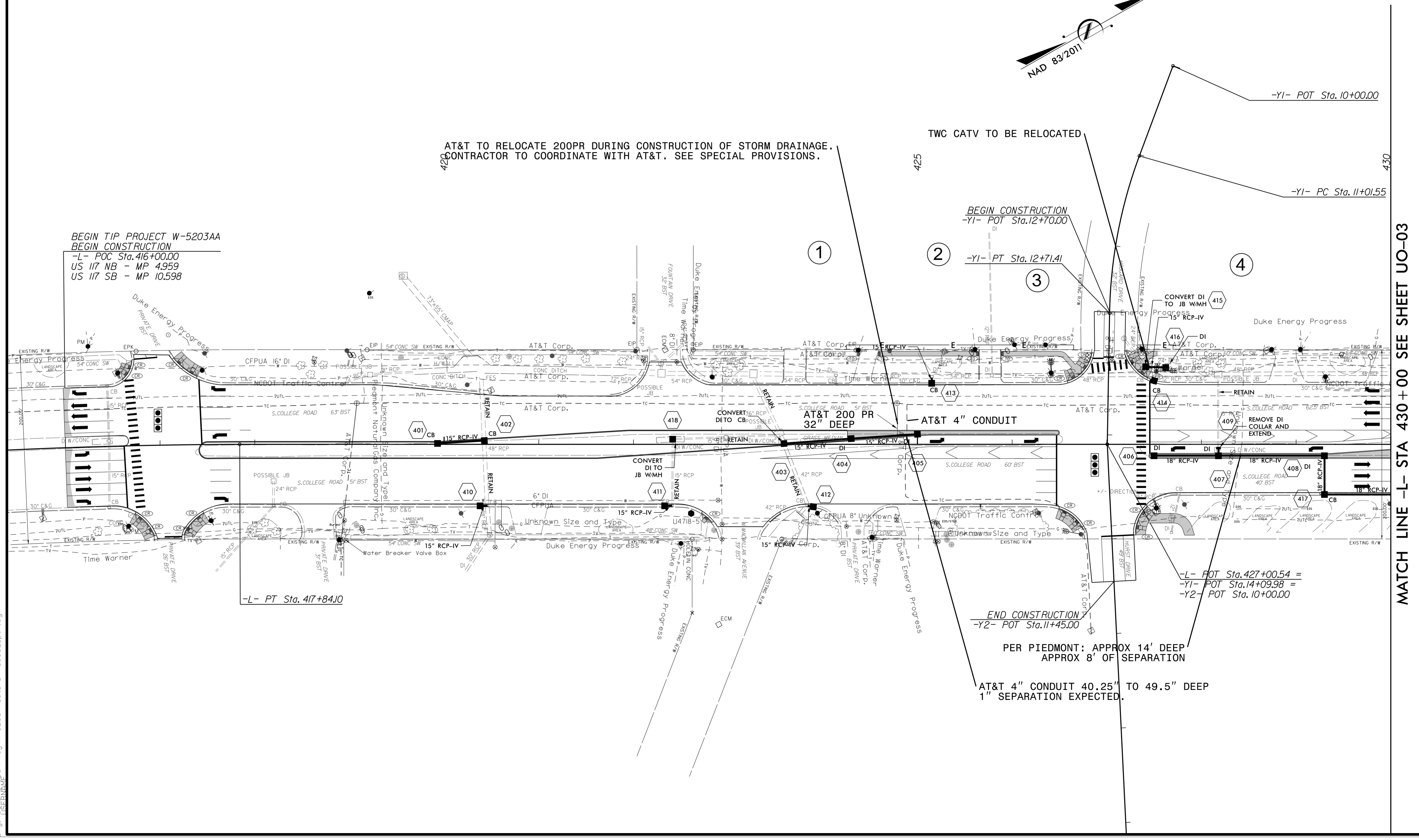
-YI- PC Sta. 11+01.55

-L- POT Sta. 427+00.54 =
 -YI- POT Sta. 14+09.98 =
 -Y2- POT Sta. 10+00.00

END CONSTRUCTION
 -Y2- POT Sta. 11+45.00

PER PIEDMONT: APPROX 14' DEEP
 APPROX 8' OF SEPARATION

AT&T 4" CONDUIT 40.25" TO 49.5" DEEP
 1" SEPARATION EXPECTED.



MATCH LINE -L- STA 430+00 SEE SHEET UO-03

5/14/99
 5/25/2016
 C:\Users\p0601\OneDrive\Projects\W-5203AA\ut_L\RDY4_U002_psh.dgn

5/14/99



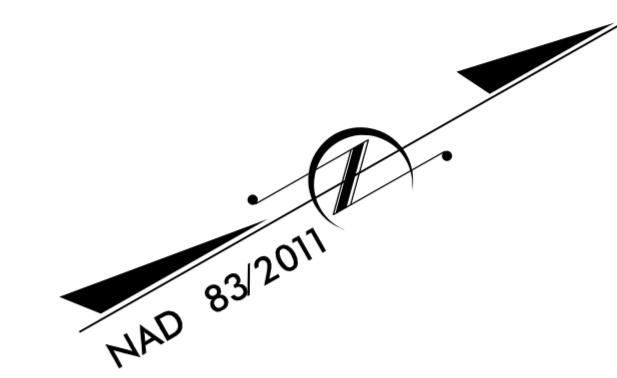
3220 GLEN ROYAL RD. RALEIGH, NC 27617
TELE 919.788.0224 FAX 919.788.0232
NC LICENSE #P-0189

PLANS PREPARED BY:
PARSONS
RALEIGH, NORTH CAROLINA, (919) 854-1345
NC LICENSE NO. F-0246
FOR NORTH CAROLINA DEPT. OF TRANSPORTATION

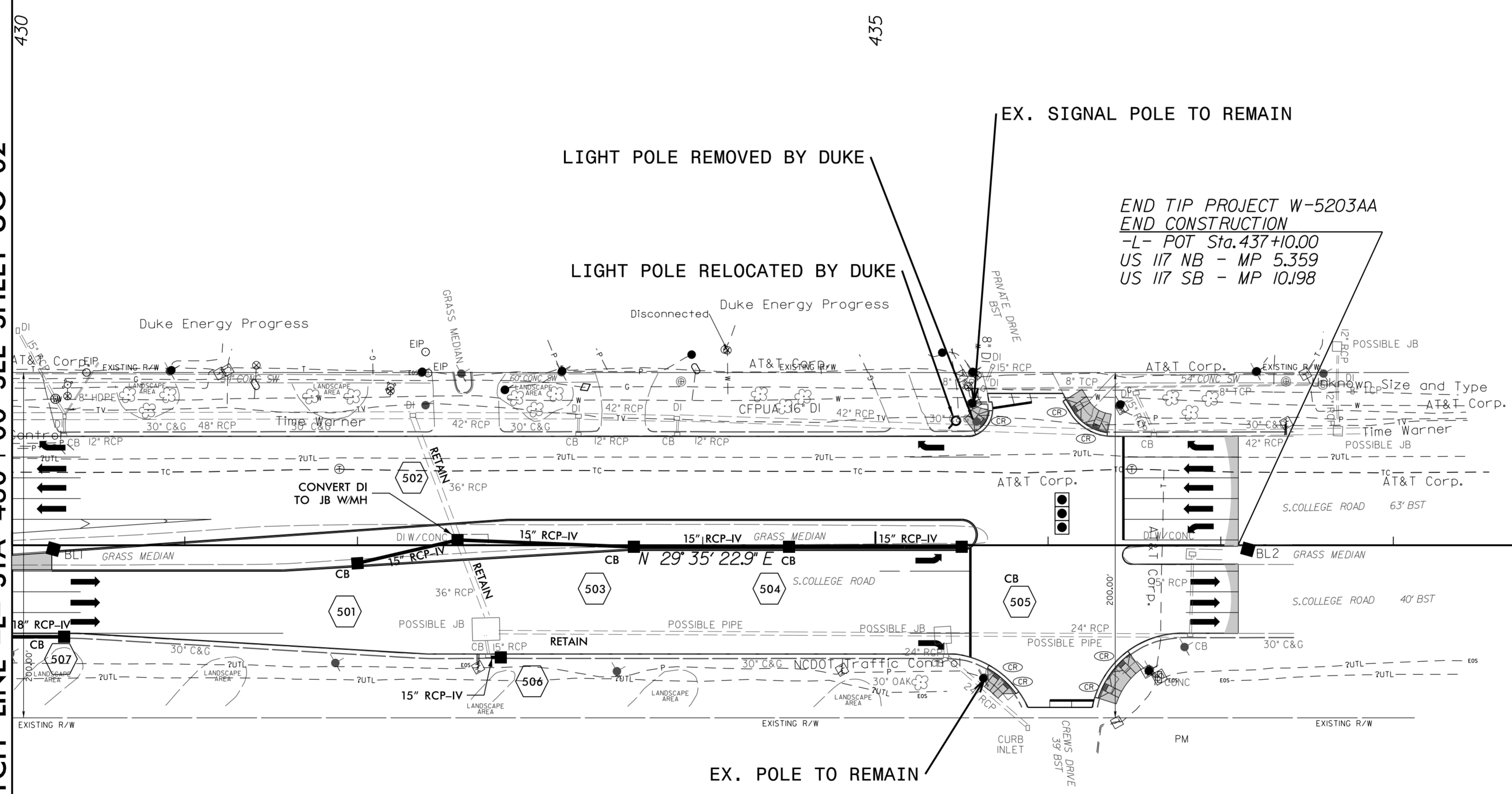
PROJECT REFERENCE NO.	SHEET NO.
W-5203AA	UO-03

UTILITIES BY OTHERS

NOTE:
ALL PROPOSED UTILITY WORK SHOWN ON THIS SHEET WILL BE DONE BY OTHERS. NO PAYMENT WILL BE MADE TO THE CONTRACTOR FOR PROPOSED UTILITY WORK SHOWN ON THIS SHEET.



MATCH LINE -L- STA 430 + 00 SEE SHEET UO-02



5/25/2016 10:00 AM C:\Users\jrb01\OneDrive\Projects\W-5203AA\ut_L_P015_U003_psh.dgn