

CONTRACT: C203913 TIP NO: B-5142

STATE OF NORTH CAROLINA

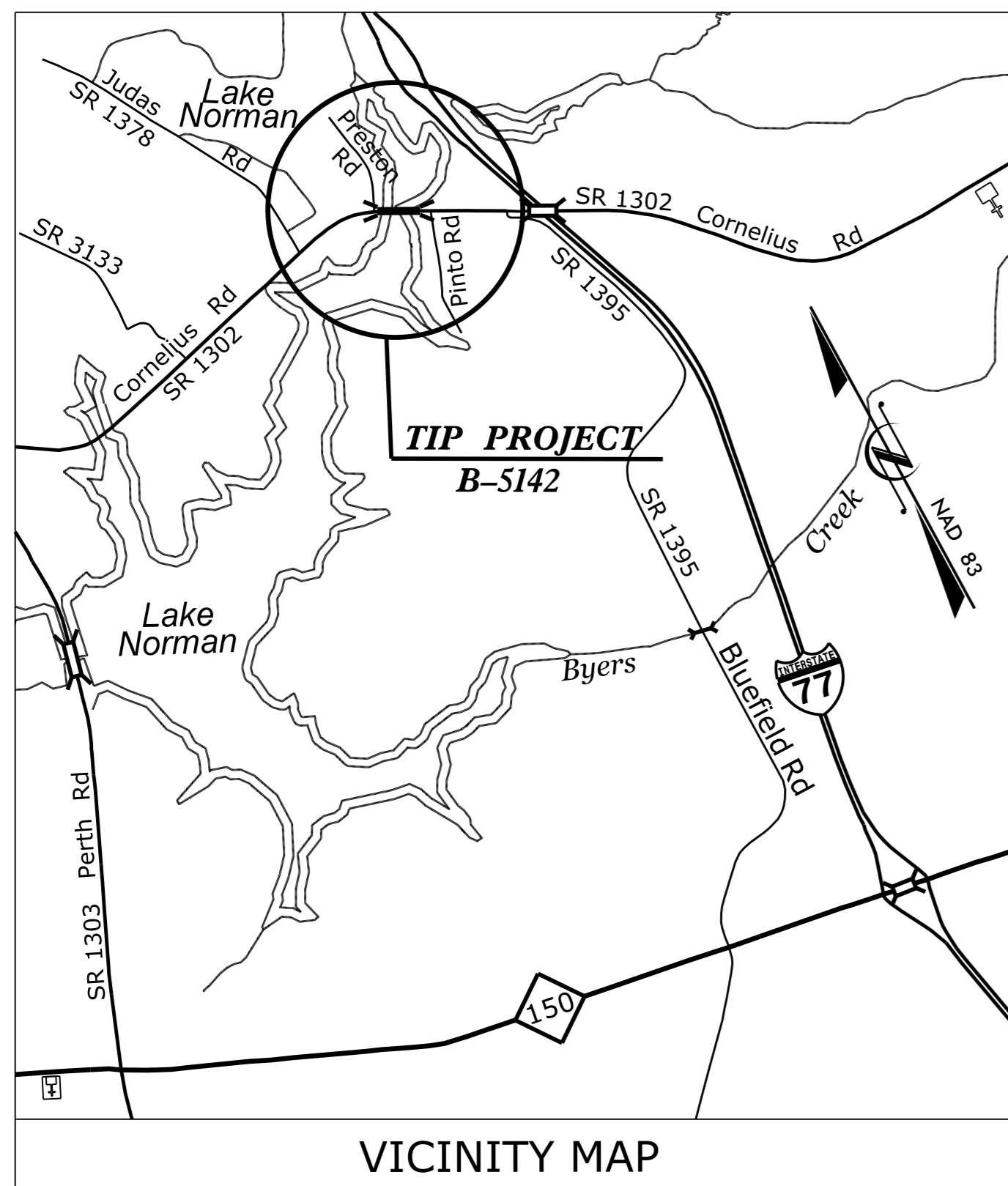
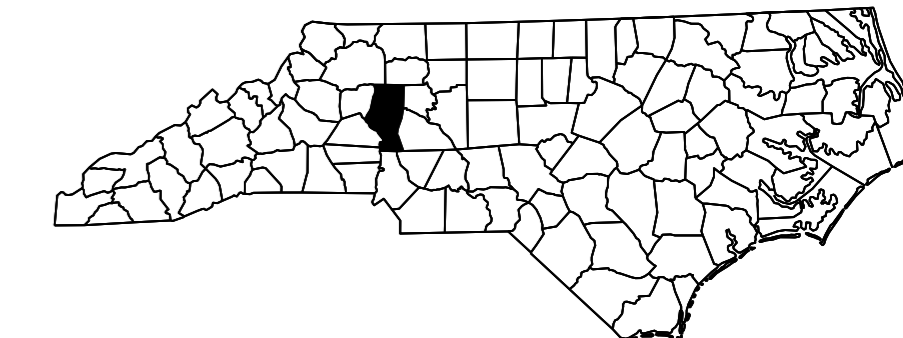
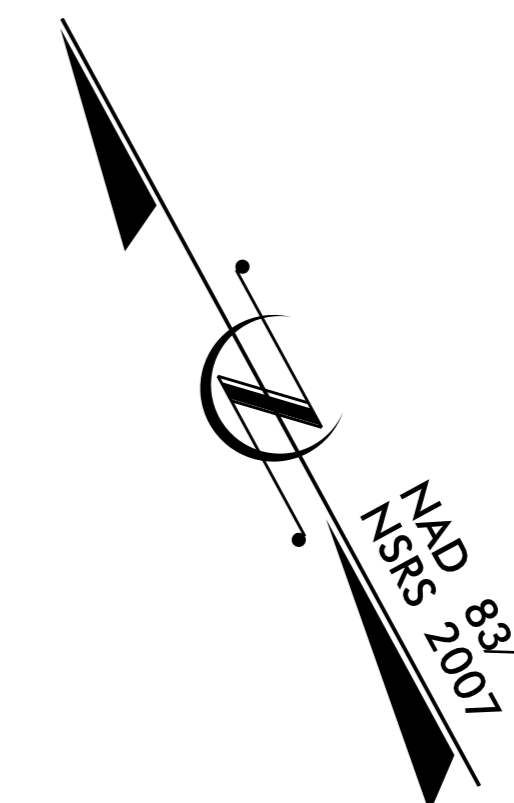
DIVISION OF HIGHWAYS

IREDELL COUNTY

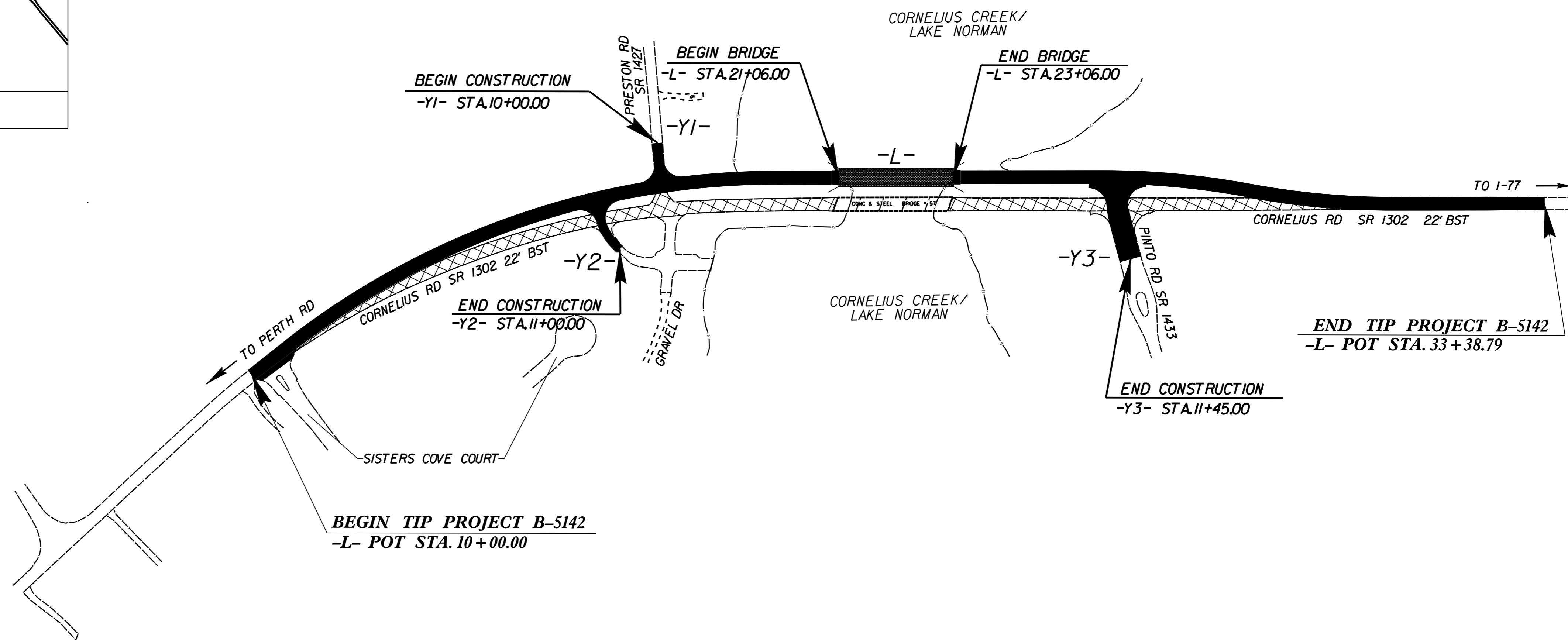
**LOCATION: REPLACE BRIDGE NO. 57 ON SR 1302
OVER CORNELIUS CREEK**

TYPE OF WORK: GRADING, DRAINAGE, PAVING AND STRUCTURE

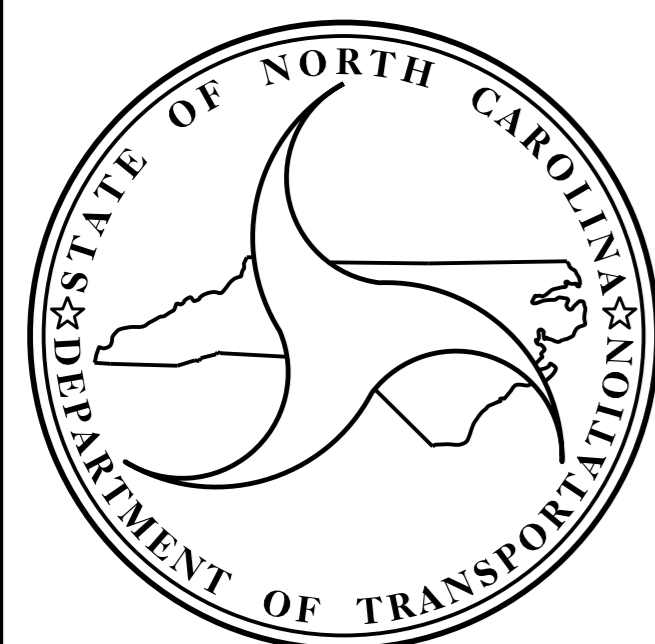
STATE	STATE PROJECT REFERENCE NO.	SHEET NO.	TOTAL SHEETS
N.C.	B-5142		
STATE PROJ. NO.	F.A. PROJ. NO.	DESCRIPTION	
42303.1.1	BRZ-1302(41)	PE	
42303.2.FD1	BRZ-1302(41)	RW, UTIL	
42303.3.FD1	BRZ-1302(41)	CONST.	



VICINITY MAP



STRUCTURE



DESIGN DATA

ADT 2016 = 10,884
 ADT 2036 = 18,164
 K = 12 %
 D = 70 %
 T = 4 % *
 V = 60 MPH
 * TTST = 3 DUAL 1
 FUNC CLASS =
 Collector
 SUB-REGIONAL TIER

PROJECT LENGTH

LENGTH OF ROADWAY TIP PROJECT B-5142 = 0.405 MILES
 LENGTH OF STRUCTURE TIP PROJECT B-5142 = 0.038 MILES
 TOTAL LENGTH OF TIP PROJECT B-5142 = 0.443 MILES

Prepared in the Office of:
DIVISION OF HIGHWAYS
 STRUCTURES MANAGEMENT UNIT
 1000 BIRCH RIDGE DR.
 RALEIGH, N.C. 27610

2012 STANDARD SPECIFICATIONS

LETTING DATE :
AUGUST 16, 2016

LAURA E. SUTTON, PE
 PROJECT ENGINEER

DONALD R. SMITH, JR., PE
 PROJECT DESIGN ENGINEER