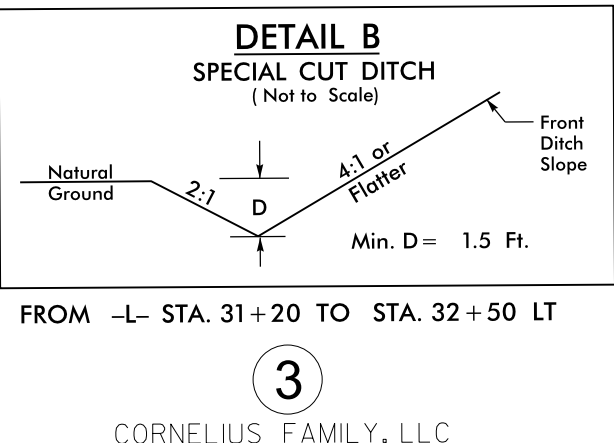
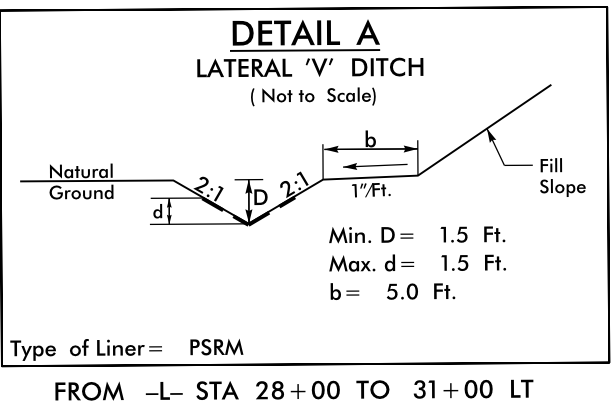
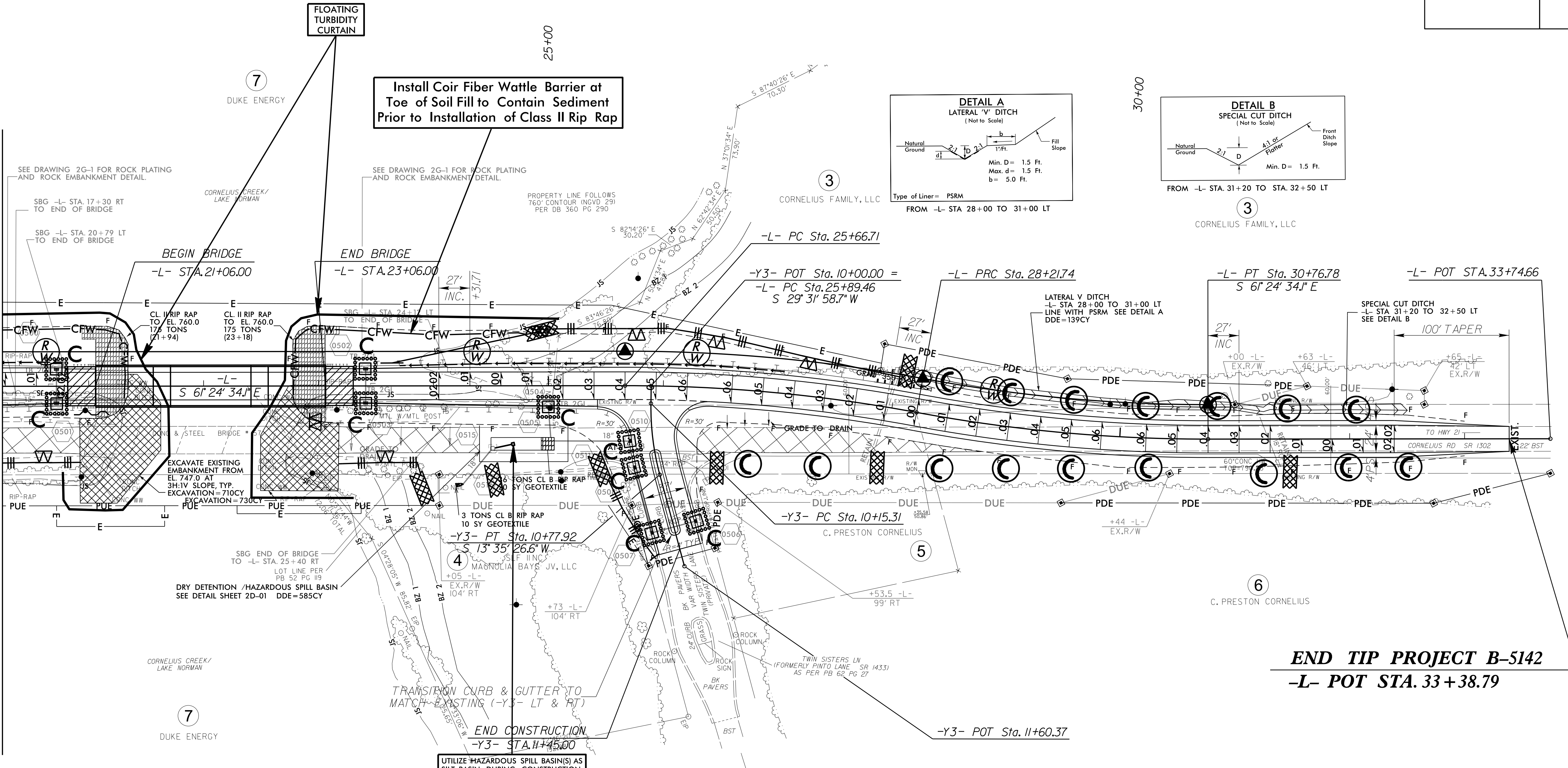


PROJECT REFERENCE NO.	SHEET NO.
B-5142	EC-8/CONST.5
RW SHEET NO.	
ROADWAY DESIGN ENGINEER	HYDRAULICS ENGINEER

Place Matting for Erosion Control on Slope as Work Allows. Sta. 25+25 to Sta. 28+00 LT

Install Coir Fiber Wattle Barrier at Toe of Soil Fill to Contain Sediment Prior to Installation of Class II Rip Rap

-L- STA. 20+25.00
MATCHLINE SEE SHEET 4



Place Matting for Erosion Control on Slope as Work Allows. Sta. 18+75 to Sta. 20+95 RT

1.5 inch Skimmer with 1.375 inch Orifice Diameter ID 5.1

Place Matting for Erosion Control on Slope as Work Allows. Sta. 23+00 to Sta. 26+00 RT

END TIP PROJECT B-5142
-L- POT STA. 33+38.79



SEE SHEET 2D-01 FOR DRY DETENTION/HAZARDOUS SPILL BASIN DETAIL
SEE SHEET 6 FOR -L- PROFILE
SEE SHEET 7 FOR -Y3- PROFILE

8/17/99
05 JUL 2016 08:37 D:\s195\B-5142-EC-pst5 07042016.dgn
R:\s195\B-5142-EC-pst5 07042016.dgn
R:\s195\B-5142-EC-pst5 07042016.dgn