

-L-

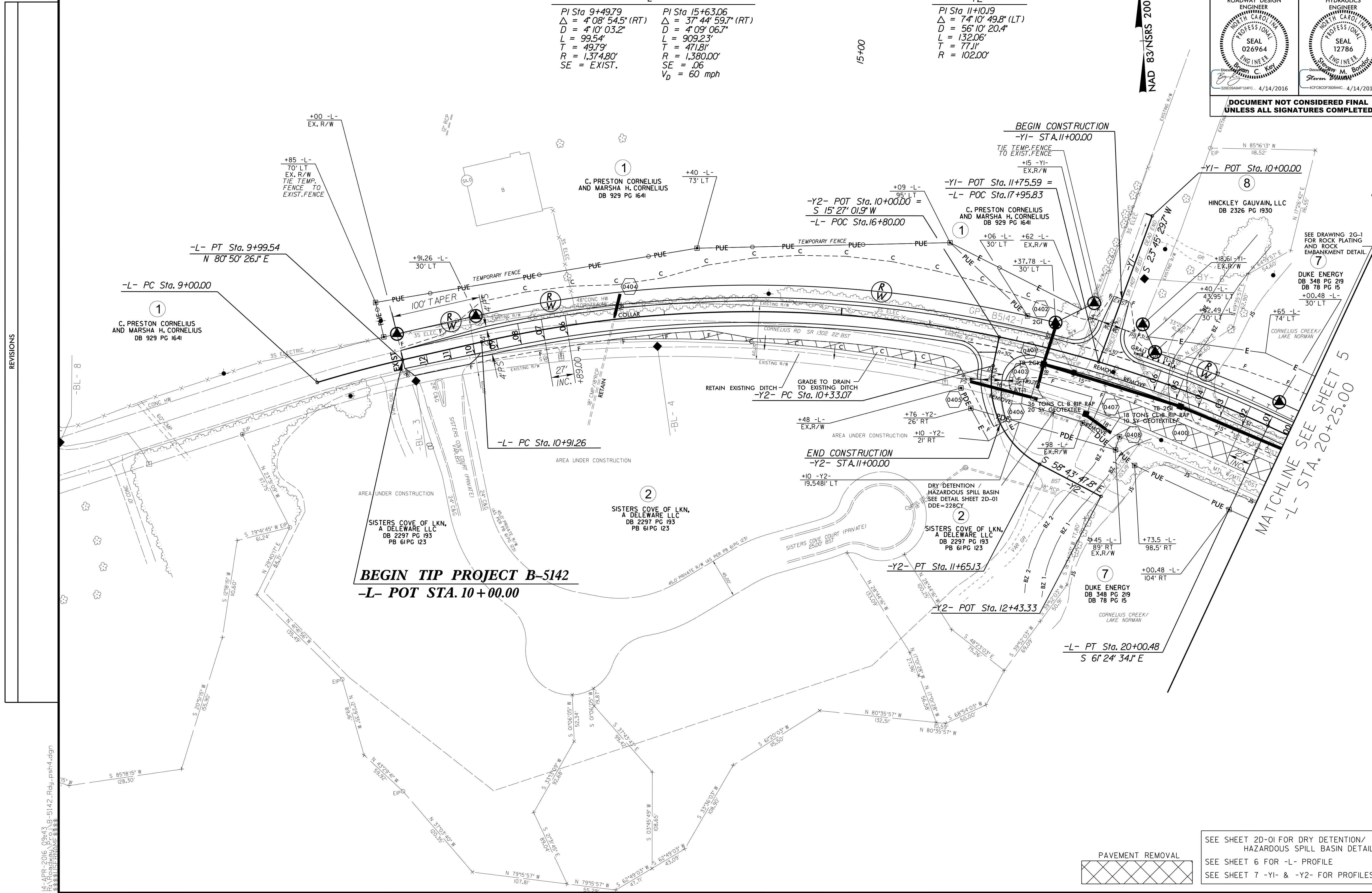
PI Sta 9+49.79
 $\Delta = 4' 08'' 54.5''$ (RT)
 $D = 4' 10'' 03.2''$
 $L = 99.54'$
 $T = 49.79'$
 $R = 1,374.80'$
 $SE = EXIST.$

PI Sta 15+63.06
 $\Delta = 37' 44'' 59.7''$ (RT)
 $D = 4' 09'' 06.7''$
 $L = 909.23'$
 $T = 471.81'$
 $R = 1,380.00'$
 $SE = 06$
 $V_D = 60$ mph

-Y2-

PI Sta 11+10.19
 $\Delta = 74' 10'' 49.8''$ (LT)
 $D = 56' 10'' 20.4''$
 $L = 132.06'$
 $T = 77.11'$
 $R = 102.00'$

NAD 83 NSRS 2007



-L- PT Sta. 9+99.54
 $N 80^{\circ} 50' 26.1'' E$

-L- PC Sta. 9+00.00

1
 C. PRESTON CORNELIUS
 AND MARSHA H. CORNELIUS
 DB 929 PG 1641

BEGIN TIP PROJECT B-5142
-L- POT STA. 10+00.00

END CONSTRUCTION
-Y2- STA. 11+00.00

-L- PT Sta. 20+00.08
 $S 61^{\circ} 24' 34.1'' E$

MATCHLINE SEE SHEET 5
-L- STA. 20+25.00



SEE SHEET 2D-01 FOR DRY DETENTION/
 HAZARDOUS SPILL BASIN DETAIL
 SEE SHEET 6 FOR -L- PROFILE
 SEE SHEET 7 -Y1- & -Y2- FOR PROFILES

REVISIONS

8/17/99

14-APR-2016 09:43 B:\E142.Rdy_psh4.dgn
 3:58:00 PM
 3:58:00 PM