

**This electronic collection of documents is provided
for the convenience of the user
and is Not a Certified Document –**

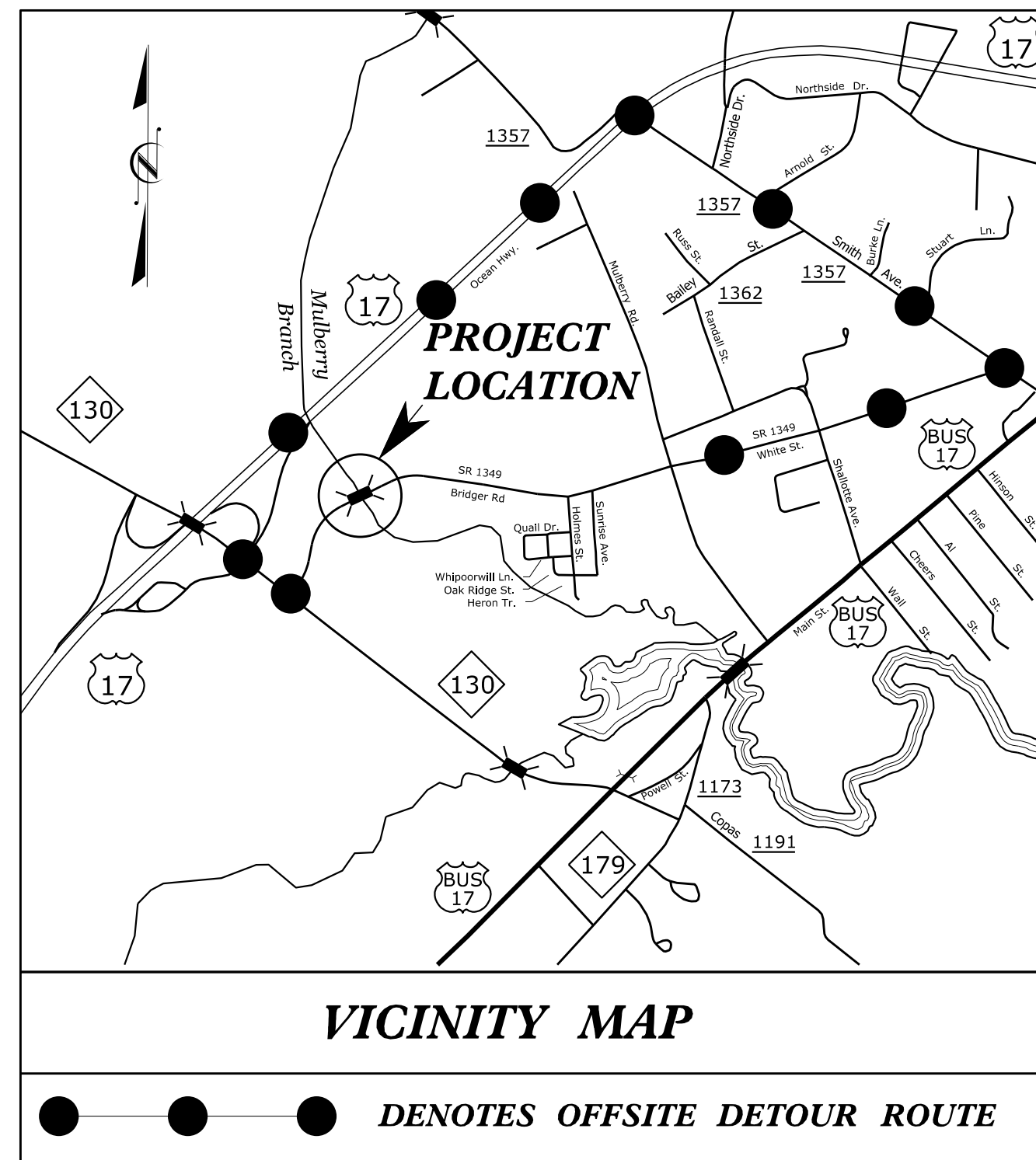
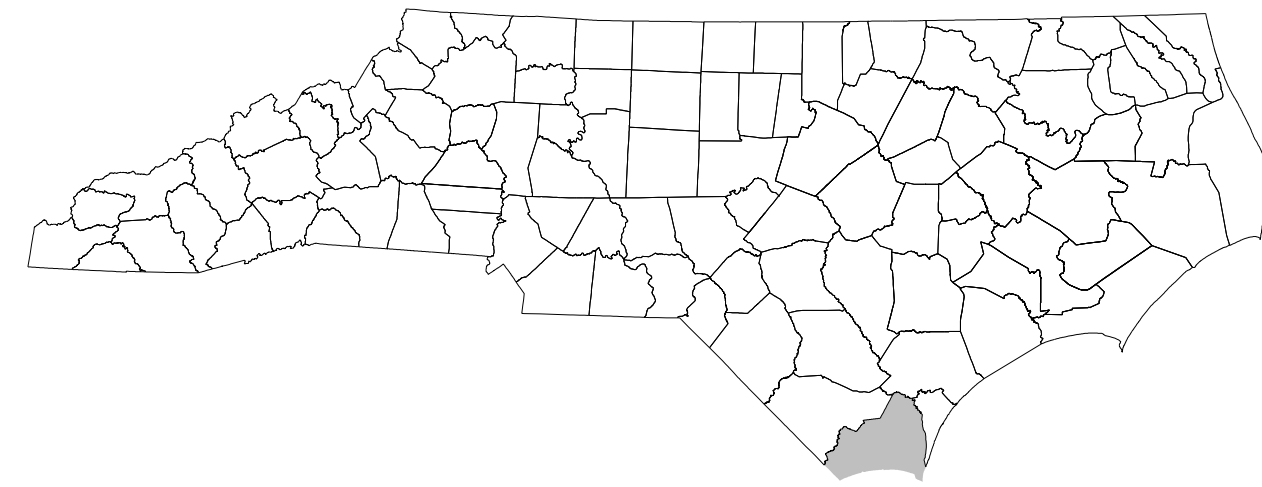
**The documents contained herein were originally issued
and sealed by the individuals whose names and license
numbers appear on each page, on the dates appearing
with their signature on that page.**

**This file or an individual page
shall not be considered a certified document.**

STATE OF NORTH CAROLINA
DIVISION OF HIGHWAYS

TRANSPORTATION MANAGEMENT PLAN

BRUNSWICK COUNTY



INDEX OF SHEETS

SHEET NO.	TITLE
TMP-1	TITLE SHEET, VICINITY MAP, INDEX OF SHEETS AND LIST OF APPLICABLE ROADWAY STANDARD DRAWINGS
TMP-1A	TRANSPORTATION OPERATIONS PLAN: (MANAGEMENT STRATEGIES, GENERAL NOTES AND PHASING)
TMP-2	SIGN DESIGN
TMP-3	ROAD CLOSURE AND OFF-SITE DETOUR

ROADWAY STANDARD DRAWINGS

THE FOLLOWING ROADWAY STANDARDS AS APPEAR IN "ROADWAY STANDARD DRAWINGS" - PROJECT SERVICES UNIT - N.C. DEPARTMENT OF TRANSPORTATION - RALEIGH, N.C., DATED JANUARY 2012 ARE APPLICABLE TO THIS PROJECT AND BY REFERENCE HEREBY ARE CONSIDERED A PART OF THESE PLANS:

SHEET NO.	TITLE
1101.01	WORK ZONE ADVANCE WARNING SIGNS
1101.02	TEMPORARY LANE CLOSURES
1101.03	TEMPORARY ROAD CLOSURES
1101.04	TEMPORARY SHOULDER CLOSURES
1101.05	WORK ZONE VEHICLE ACCESSES
1101.06	WARNING SIGNS FOR BLASTING ZONES
1101.11	TRAFFIC CONTROL DESIGN TABLES
1110.01	STATIONARY WORK ZONE SIGNS
1110.02	PORTABLE WORK ZONE SIGNS
1115.01	FLASHING ARROW BOARDS
1130.01	DRUM
1135.01	CONES
1145.01	BARRICADES
1150.01	FLAGGING DEVICES
1160.01	TEMPORARY CRASH CUSHION
1165.01	WORK VEHICLE LIGHTING SYSTEMS AND TMA DELINEATION
1170.01	POSITIVE PROTECTION
1180.01	SKINNY-DRUM
1205.01	PAVEMENT MARKINGS - LINE TYPES AND OFFSETS
1205.02	PAVEMENT MARKINGS - TWO-LANE AND MULTI-LANE ROADWAYS
1205.03	PAVEMENT MARKINGS - EXITS AND ENTRANCE RAMP
1205.04	PAVEMENT MARKINGS - INTERSECTIONS
1205.05	PAVEMENT MARKINGS - TURN LANES
1205.06	PAVEMENT MARKINGS - LANE DROPS
1205.07	PAVEMENT MARKINGS - PEDESTRIAN CROSSWALKS
1205.08	PAVEMENT MARKINGS - SYMBOLS AND WORD MESSAGES
1205.09	PAVEMENT MARKINGS - PAINTED ISLANDS
1205.10	PAVEMENT MARKINGS - SCHOOL AREAS
1205.11	PAVEMENT MARKINGS - RAILROAD CROSSINGS
1205.12	PAVEMENT MARKINGS - BRIDGES
1205.13	PAVEMENT MARKINGS - LANE REDUCTIONS
1250.01	RAISED PAVEMENT MARKERS - INSTALLATION SPACING
1251.01	RAISED PAVEMENT MARKERS - PERMANENT AND TEMPORARY
1261.01	GUARDRAIL AND BARRIER DELINEATORS - INSTALLATION SPACING
1261.02	GUARDRAIL AND BARRIER DELINEATORS - TYPES AND MOUNTING
1262.01	GUARDRAIL END DELINEATION
1264.01	OBJECT MARKERS - TYPES
1264.02	OBJECT MARKERS - INSTALLATION

**DOCUMENT NOT CONSIDERED FINAL
UNLESS ALL SIGNATURES COMPLETED**

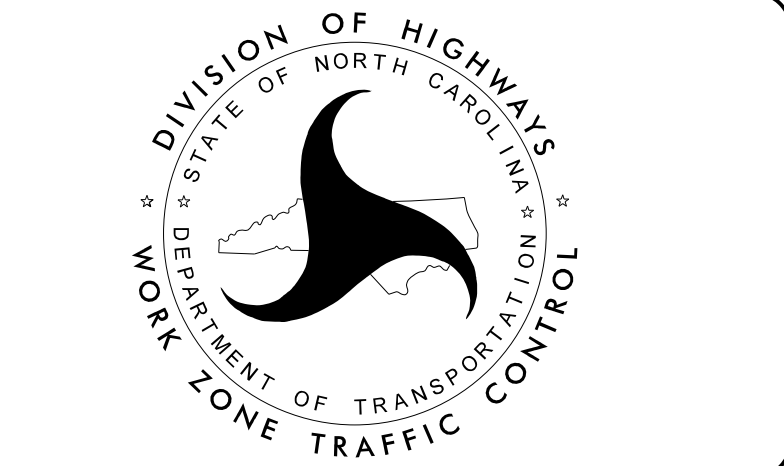
APPROVED: Don A. Parker
DATE: 5/3/2016

SEAL



N.C.D.O.T. WORK ZONE TRAFFIC CONTROL
1561 MAIL SERVICE CENTER (MSC) RALEIGH, NC 27699-1561
750 N. GREENFIELD PARKWAY, GARNER, NC 27529 (DELIVERY)
PHONE: (919) 773-2800 FAX: (919) 771-2745

J. S. BOURNE, P.E. STATE TRAFFIC MANAGEMENT ENGINEER
STEVE KITE, P.E. TRAFFIC CONTROL PROJECT ENGINEER
DON A. PARKER, P.E. TRAFFIC CONTROL PROJECT DESIGN ENGINEER
SPENCER JENNINGS TRAFFIC CONTROL DESIGN ENGINEER



5/3/2016 R:\Traffic\TrafficControl\TCP\B-4440_TC_TMP_Ldgn User:rsb.jennings

B-4440

TIP PROJECT:

GENERAL NOTES

CHANGES MAY BE REQUIRED WHEN PHYSICAL DIMENSIONS IN THE DETAIL DRAWINGS, STANDARD DETAILS, AND ROADWAY DETAILS ARE NOT ATTAINABLE TO MEET FIELD CONDITIONS OR RESULT IN DUPLICATE OR UNDESIRE OVERLAPPING OF DEVICES. MODIFICATION MAY INCLUDE: MOVING, SUPPLEMENTING, COVERING, OR REMOVAL OF DEVICES AS DIRECTED BY THE ENGINEER.

THE FOLLOWING GENERAL NOTES APPLY AT ALL TIMES FOR THE DURATION OF THE CONSTRUCTION PROJECT EXCEPT WHEN OTHERWISE NOTED IN THE PLAN OR DIRECTED BY THE ENGINEER.

TRAFFIC PATTERN ALTERATIONS

- A) NOTIFY THE ENGINEER THIRTY (30) CALENDAR DAYS PRIOR TO ANY TRAFFIC PATTERN ALTERATION.

SIGNING

- B) PROVIDE SIGNING AND DEVICES REQUIRED TO CLOSE THE ROAD ACCORDING TO THE ROADWAY STANDARD DRAWINGS AND TRAFFIC CONTROL PLANS.

PROVIDE SIGNING REQUIRED FOR THE OFF-SITE DETOUR ROUTE AS SHOWN IN THE TRAFFIC CONTROL PLANS.

- C) COVER OR REMOVE ALL SIGNS AND DEVICES REQUIRED TO CLOSE THE ROAD WHEN ROAD CLOSURE IS NOT IN OPERATION.

COVER OR REMOVE ALL SIGNS REQUIRED FOR THE OFF-SITE DETOUR WHEN THE DETOUR IS NOT IN OPERATION.

- D) ENSURE ALL NECESSARY SIGNING IS IN PLACE PRIOR TO ALTERING ANY TRAFFIC PATTERN.

TRAFFIC CONTROL DEVICES

- E) PLACE TYPE III BARRICADES, WITH "ROAD CLOSED" SIGN R11-2 ATTACHED, OF SUFFICIENT LENGTH TO CLOSE ENTIRE ROADWAY.

PAVEMENT MARKINGS AND MARKERS

- F) INSTALL PAVEMENT MARKINGS AND PAVEMENT MARKERS ON THE FINAL SURFACE AS SHOWN IN THE PAVEMENT MARKING PLAN.

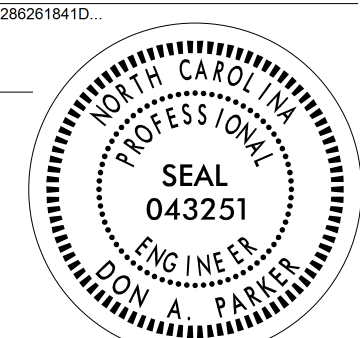

- G) TIE PROPOSED PAVEMENT MARKING LINES TO EXISTING PAVEMENT MARKING LINES.

PHASING

- STEP 1:
USING RSD 1101.03, SHEET 1 OF 9, AND SHEET TMP-3, INSTALL DETOUR SIGNS, PLACE TYPE III BARRICADES TO CLOSE SR 1349 (BRIDGERS RD) TO THROUGH TRAFFIC, AND DETOUR TRAFFIC OFF-SITE.

- STEP 2:
AWAY FROM TRAFFIC, COMPLETE THE FOLLOWING:
1) REMOVE EXISTING STRUCTURE AND CONSTRUCT PROPOSED STRUCTURE. (SEE ROADWAY AND STRUCTURE PLANS)
2) CONSTRUCT PROPOSED ROADWAY UP TO AND INCLUDING FINAL LAYER OF SURFACE COURSE. (SEE ROADWAY PLANS)
3) PLACE FINAL PAVEMENT MARKINGS AND TIE INTO EXISTING PAVEMENT MARKINGS. (SEE PAVEMENT MARKING PLANS)

- STEP 3:
REMOVE ALL TRAFFIC CONTROL DEVICES, ALL DETOUR SIGNING AND OPEN SR 1349 (BRIDGERS RD) TO PROPOSED TRAFFIC PATTERN.

APPROVED: <u>Don A. Parker</u> <small>420462962610410</small> DATE: 5/3/2016			<h1 style="margin: 0;">TRANSPORTATION OPERATIONS PLAN</h1>
--	---	---	--

SIGN NUMBER: SP16133	BACKG COLOR: Fluorescent Orange	DESIGN BY: EEW	CHECKED BY:	Apr 26, 2016
TYPE: STATIONARY	COPY COLOR: Black	PROJECT ID: B-4440	LOCATION:	DIV: 3
QUANTITY: SEE PLANS				
SIGN WIDTH: 4'-0"				
HEIGHT: 2'-0"				
TOTAL AREA: 8.0 Sq.Ft.				
BORDER TYPE: INSET				
RECESS: 0.38"				
WIDTH: 0.63"				
RADII: 1.5"				
NO. Z BARS:	MAT'L: 0.080" (2.0 mm) ALUMINUM			
LENGTH:				

USE NOTES: 1,2

- Legend and border shall be direct applied black non-reflective sheeting.
- Background shall be NC GRADE B fluorescent orange retroreflective sheeting.

BORDER
R=1.5"
TH=0.63"
IN=0.38"

Spacing Factor is 1 unless specified otherwise

LETTER POSITIONS

Letter spacings are to start of next letter

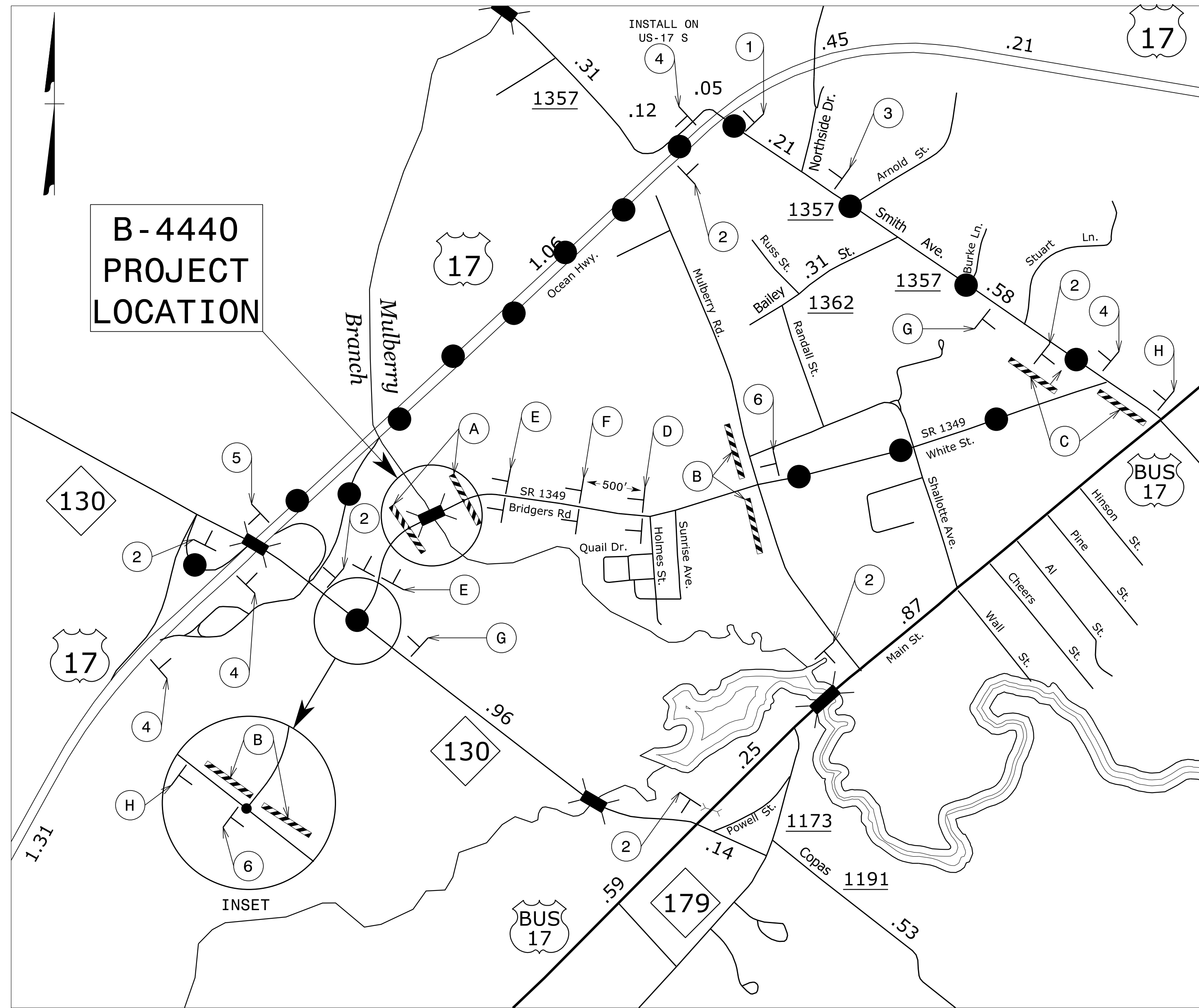
Letter	B	R	I	D	G	E	R	S	Series/Size
Text Length	5.6	5.1	5.1	2.4	5.3	5.4	4.7	4.7	D 2000
									36.8
									D 2000
	14	5	5	6	4.1	13.9			20.1

FILENAME: Misc Guidesign New 7_16_15

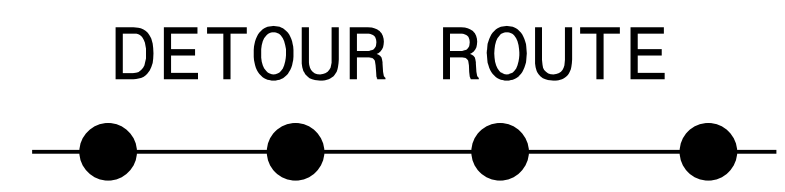
NORTH CAROLINA D.O.T. SIGN DETAIL

5/3/2016
R:\Traffic\TrafficControl\TCP\B-4440_TC_TMP_2.dgn
User: sbjennings

APPROVED: <i>Ron King</i>			SIGN DESIGN
DATE: 5/3/2016			
DOCUMENT NOT CONSIDERED FINAL UNLESS ALL SIGNATURES COMPLETED			



**B-4440
PROJECT
LOCATION**

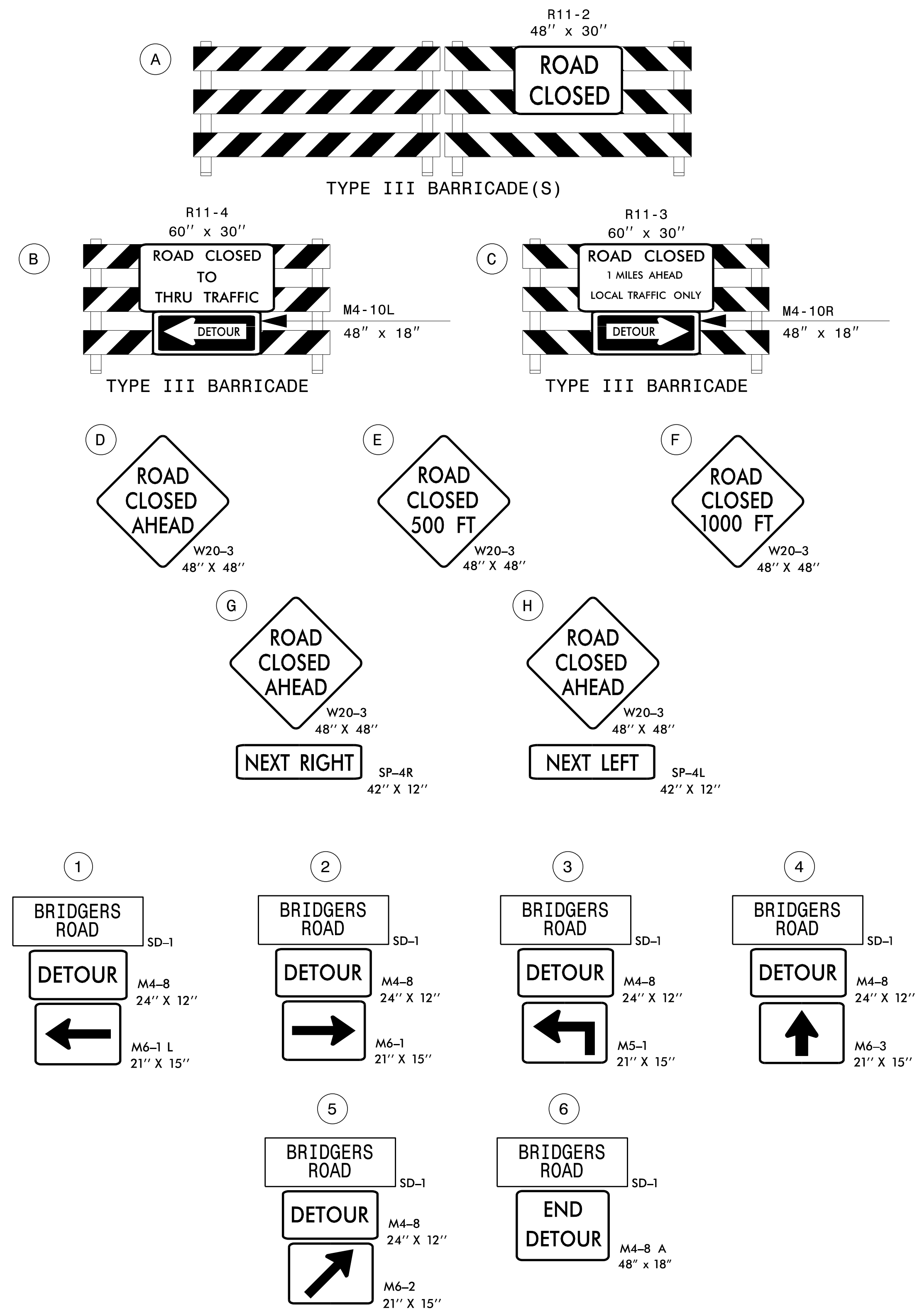


LEGEND

- TRAFFIC CONTROL DEVICES**
- BARRICADE (TYPE III)
- TEMPORARY SIGNING**
- STATIONARY SIGN

NOTES:
TRAFFIC CONTROL DEVICES (A) THROUGH (H) SHALL BE INSTALLED ACCORDING TO RSD 1101.03, SHEET 1 OF 9

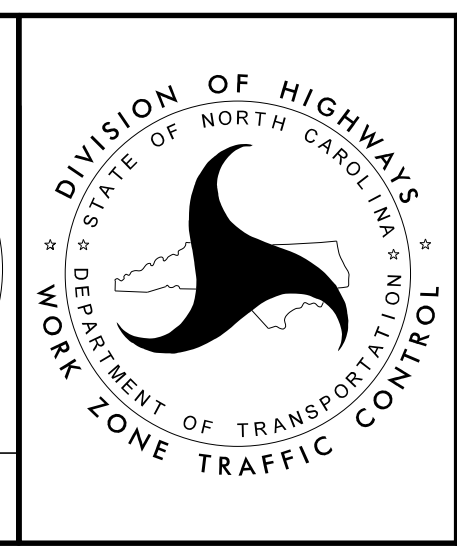
TRAFFIC CONTROL DEVICES (1) THROUGH (6) SHALL BE INSTALLED AS SHOW ON PLAN OR AS DIRECTED BY THE ENGINEER



APPROVED: *Don A. Parker*
DATE: 5/3/2016

SEAL
043251
ENGINEER
DON A. PARKER

DOCUMENT NOT CONSIDERED FINAL
UNLESS ALL SIGNATURES COMPLETED



**ROAD CLOSURE
AND
OFF-SITE DETOUR**

5/3/2016 R:\TrafficControl\CP\B-4440_TC_TMP_3.dgn User:tabjennings