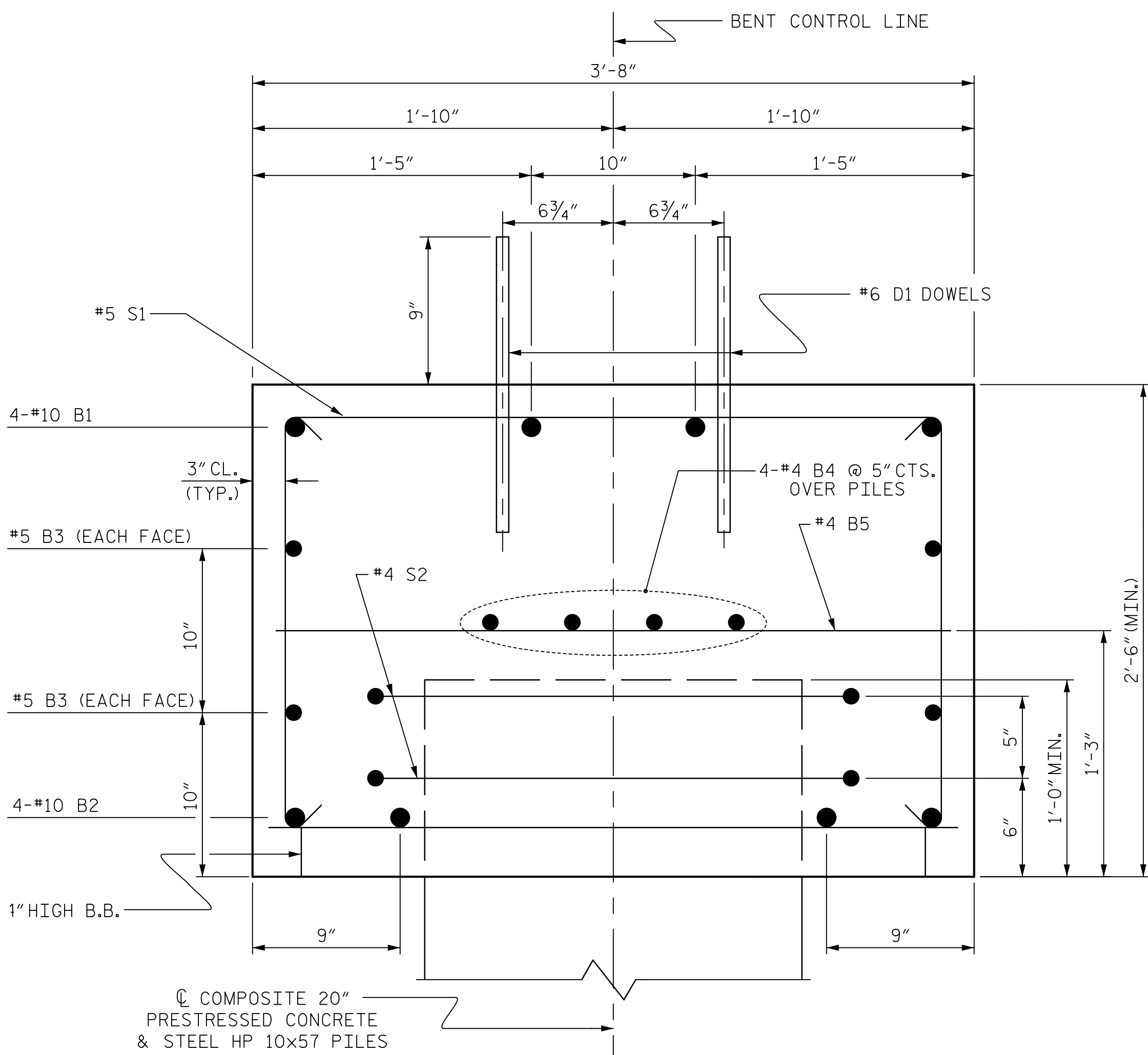
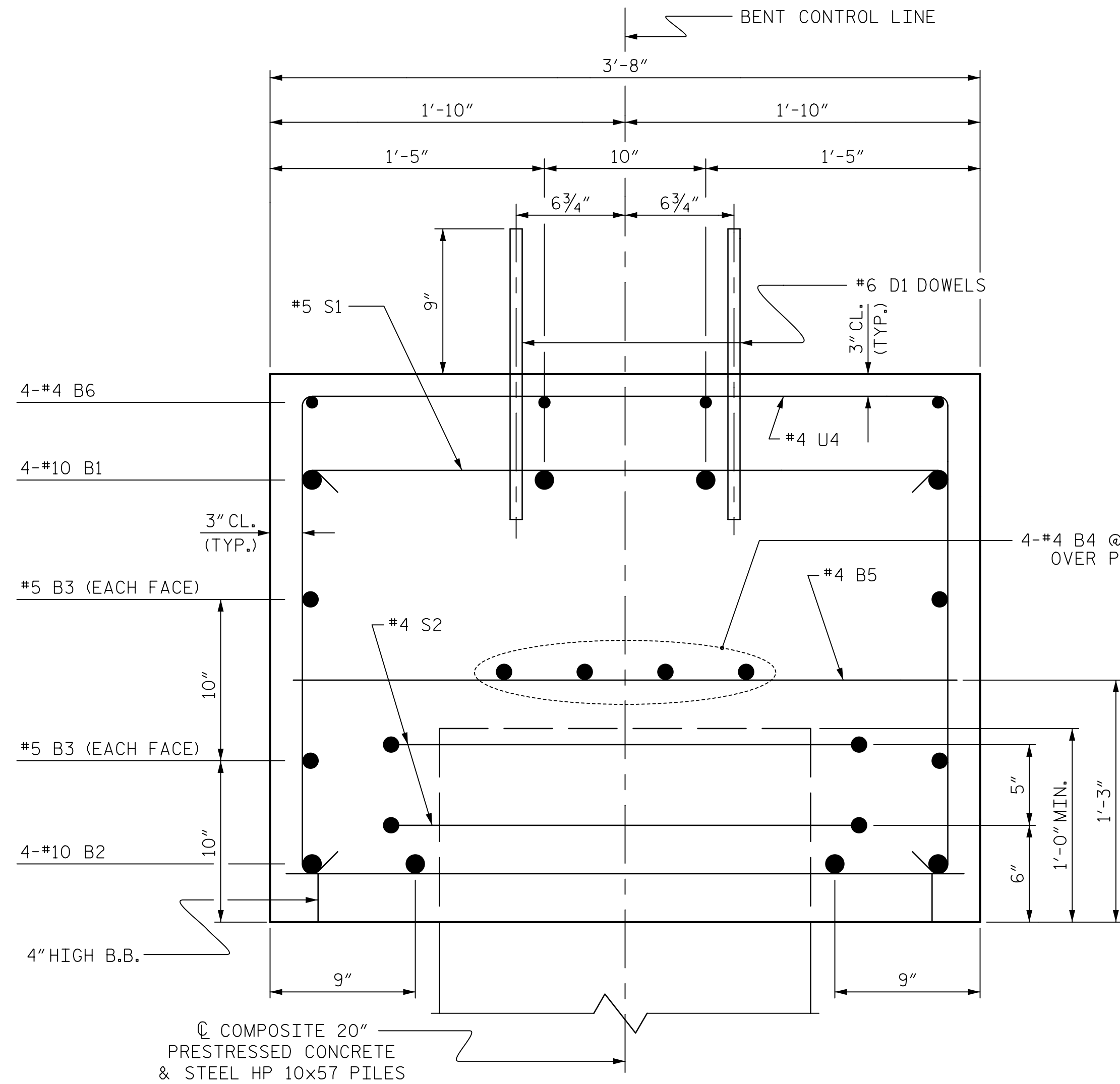


END OF CAP VIEW  
(TYPICAL BOTH ENDS)

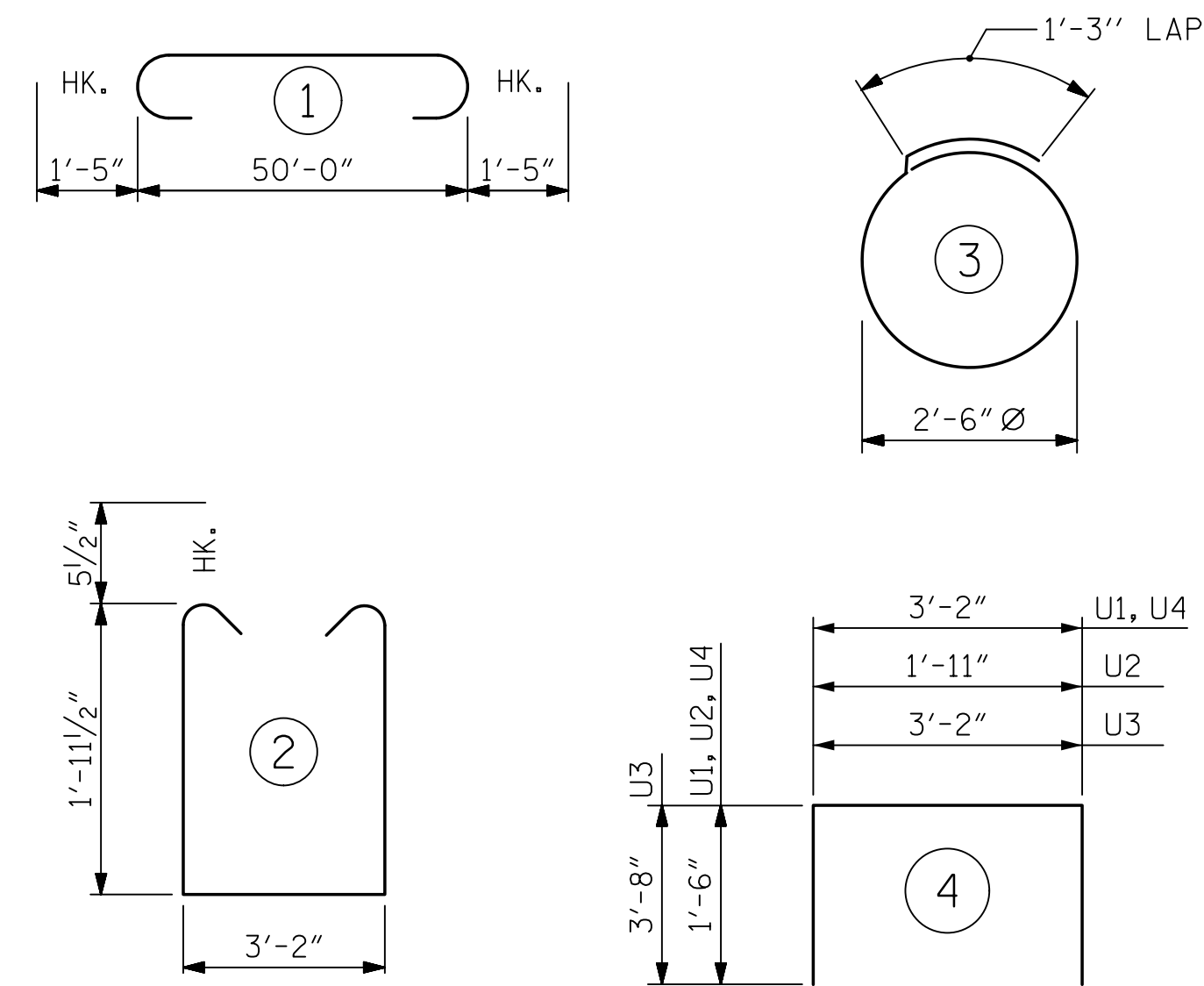


SECTION A-A



SECTION B-B

BAR TYPES



ALL BAR DIMENSIONS ARE OUT TO OUT.

BILL OF MATERIAL

FOR ONE BENT

BAR	NO.	SIZE	TYPE	LENGTH	WEIGHT
* B1	4	#10	1	52'-10"	909
* B2	4	#10	STR	50'-0"	861
* B3	4	#5	STR	50'-0"	209
* B4	8	#4	STR	26'-5"	142
* B5	13	#4	STR	3'-2"	27
* B6	8	#4	STR	19'-8"	105
* D1	64	#6	STR	1'-6"	144
* S1	51	#5	2	8'-0"	426
* S2	16	#4	3	9'-2"	98
* U1	4	#4	4	6'-2"	16
* U2	8	#4	4	4'-11"	26
* U3	2	#9	4	10'-6"	71
* U4	25	#4	4	6'-2"	103

\*EPOXY COATED REINFORCING STEEL 3137 LBS

CLASS AA CONCRETE TOTAL ▲18.0 C.Y.

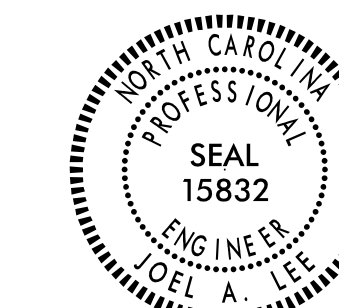
20" PRESTRESSED CONCRETE PILES  
No. 8 LIN. FT. 148

HP 10 X 57 STEEL PILES  
No. 8 350  
PDA TESTING EA. 1  
STEEL PILE POINTS EA. 8  
PILE REDRIVES EA. 4

▲ CONCRETE DISPLACED BY THE 20" PRESTRESSED CONCRETE PILES HAS BEEN DEDUCTED FROM THE CONCRETE QUANTITY.

**Mead & Hunt**

127 W. Hargett Street  
Suite 504  
Raleigh, NC 27601  
919-714-8670  
meadhunt.com  
NC License No. F-1235



PROJECT NO. B-4440  
BRUNSWICK COUNTY  
STATION: 18+90.36 -L-

SHEET 2 OF 2

STATE OF NORTH CAROLINA  
DEPARTMENT OF TRANSPORTATION  
RALEIGH

SUBSTRUCTURE  
BENT No. 1

DRAWN BY: J.S. HOBSON DATE: 2/16/15  
CHECKED BY: J.A. LEE DATE: 2/19/15  
DESIGN ENGINEER OF RECORD: J.A. LEE DATE: 2/19/15

DOCUMENT NOT CONSIDERED  
FINAL UNLESS ALL  
SIGNATURES COMPLETED

REVISIONS						SHEET NO.
NO.	BY:	DATE:	NO.	BY:	DATE:	S-19
1			3			TOTAL SHEETS
2			4			22