

**NOTES**

ALL REINFORCING STEEL IN THE PARAPETS AND END POSTS SHALL BE EPOXY COATED.

#5 S3 BARS ARE INCLUDED IN THE BILL OF MATERIAL FOR CORED SLAB UNITS.

GROOVED CONTRACTION JOINTS, 1/2" IN DEPTH, SHALL BE TOOLED IN ALL EXPOSED FACES OF THE BARRIER RAIL AND IN ACCORDANCE WITH ARTICLE 825-10(B) OF THE STANDARD SPECIFICATIONS. THE CONTRACTION JOINT SHALL BE LOCATED AT EACH THIRD POINT BETWEEN BARRIER RAIL EXPANSION JOINTS. ONLY ONE CONTRACTION JOINT IS REQUIRED AT MIDPOINT OF BARRIER RAIL SEGMENTS LESS THAN 20 FEET IN LENGTH AND NO CONTRACTION JOINTS ARE REQUIRED FOR THOSE SEGMENTS LESS THAN 10 FEET IN LENGTH.

**BILL OF MATERIAL**

**PARAPET & END POSTS**

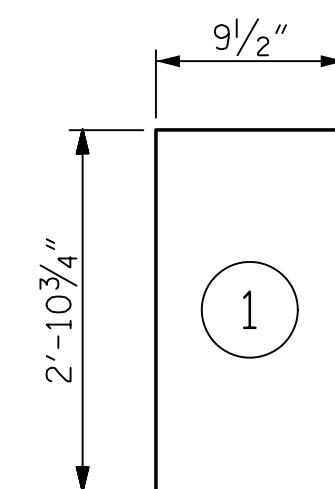
BAR	NO.	SIZE	TYPE	LENGTH	WEIGHT
*B2	40	#5	STR	22'-2"	925
*B4	40	#5	STR	19'-8"	821
*E1	8	#7	STR	3'-4"	55
*E2	8	#7	STR	3'-10"	63
*E3	8	#7	STR	4'-4"	71
*E4	8	#7	STR	4'-10"	79
*E5	8	#7	STR	5'-2"	85
*F1	8	#6	STR	1'-10"	22
*F2	8	#6	STR	3'-0"	36
*F3	8	#6	STR	3'-9"	45
*S4	174	#5	1	6'-7"	1195

\*EPOXY COATED REINFORCING STEEL 3397 LBS

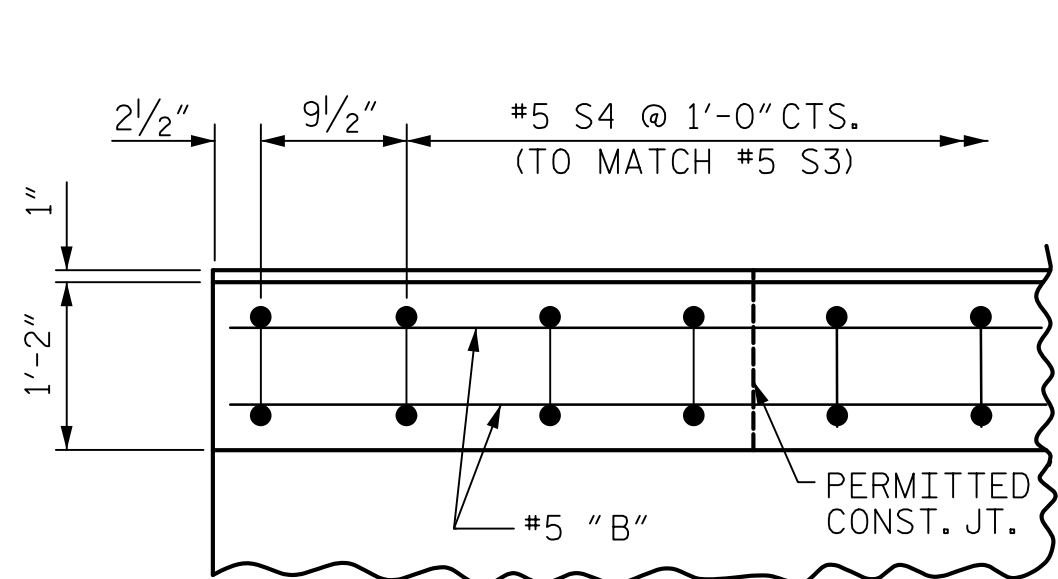
CLASS AA CONCRETE 25.2 C.Y.

1'-2" X 3'-35/8" CONCRETE PARAPET 170.25 L.F.

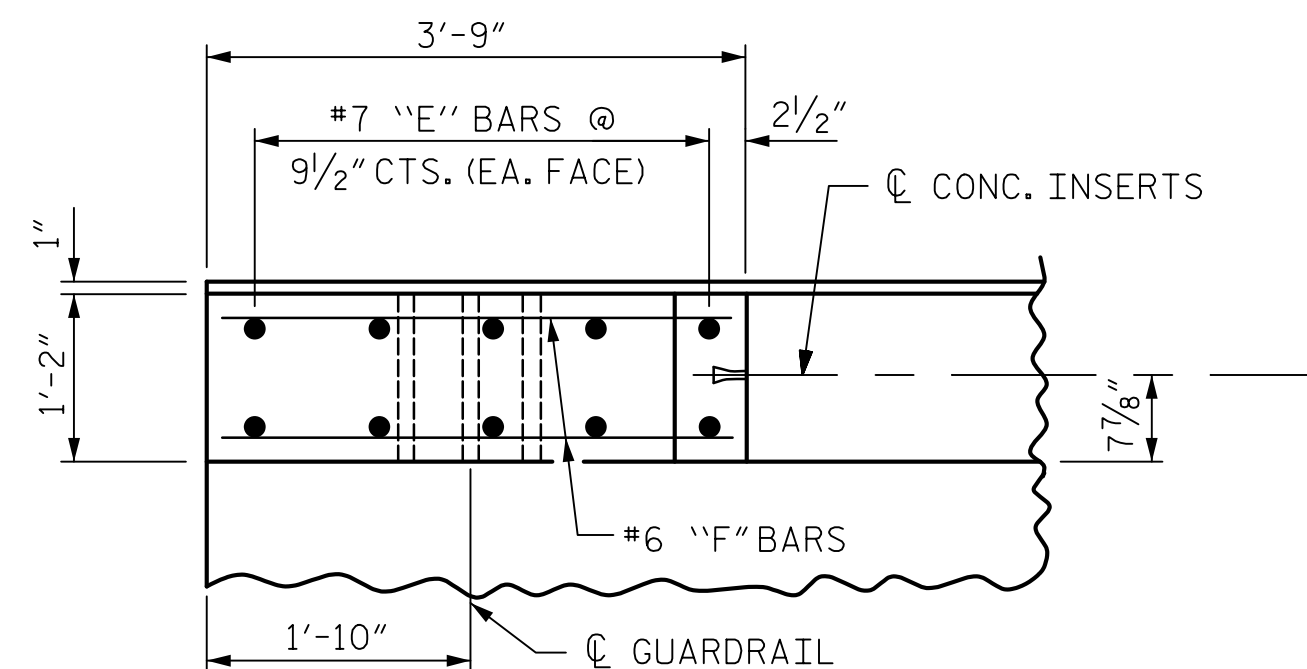
**BAR TYPES**



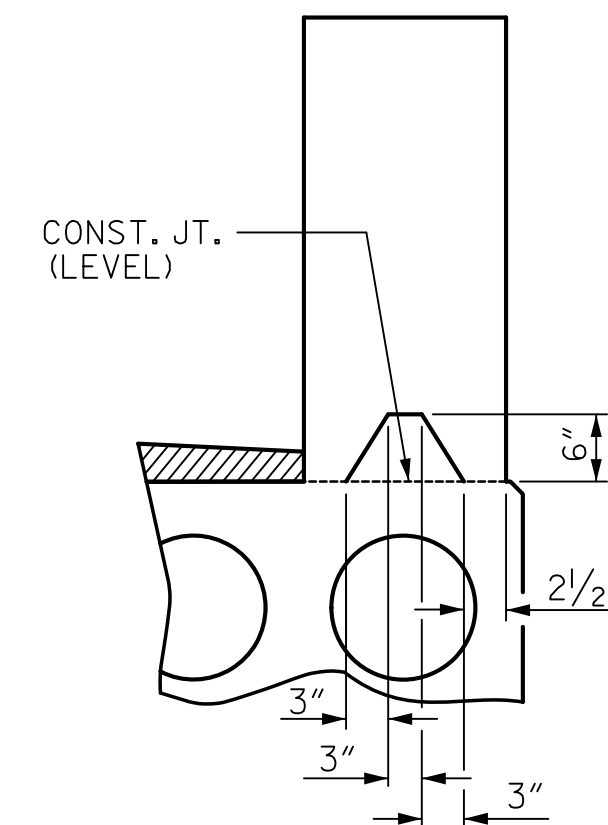
ALL BAR DIMENSIONS ARE OUT TO OUT.



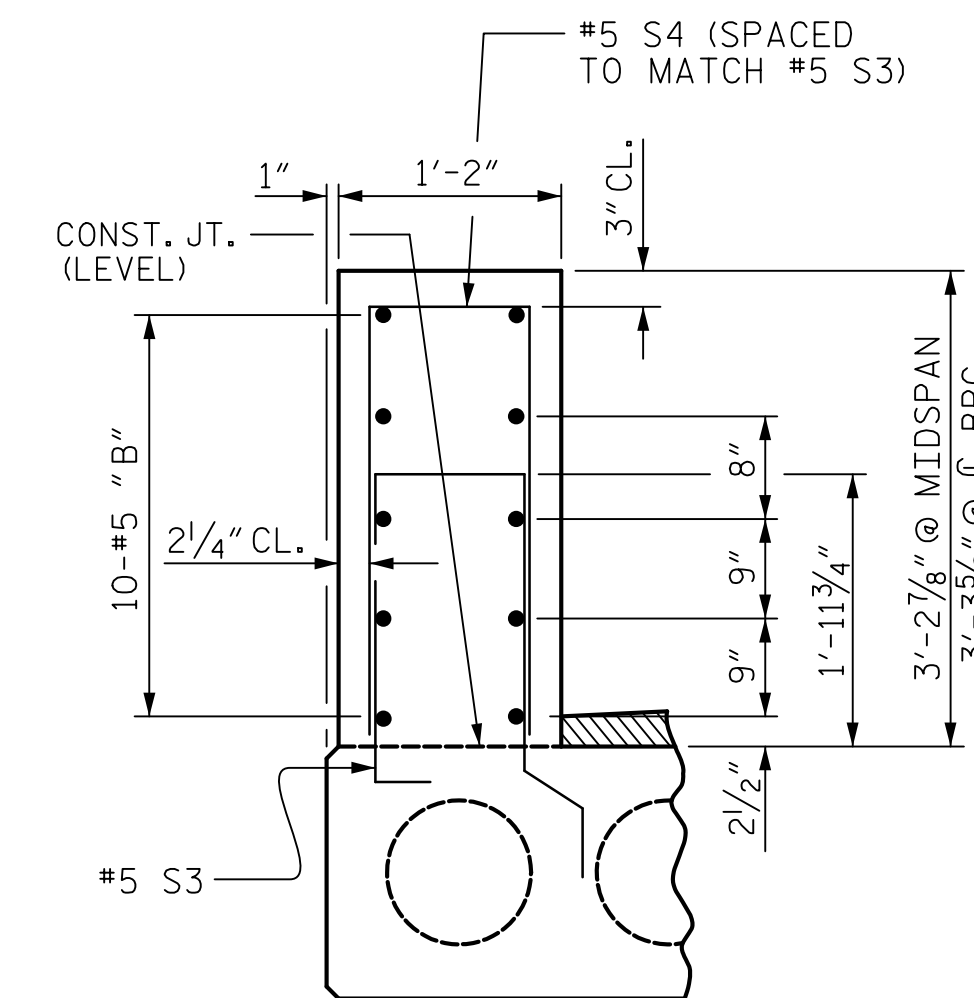
PLAN OF PARAPET



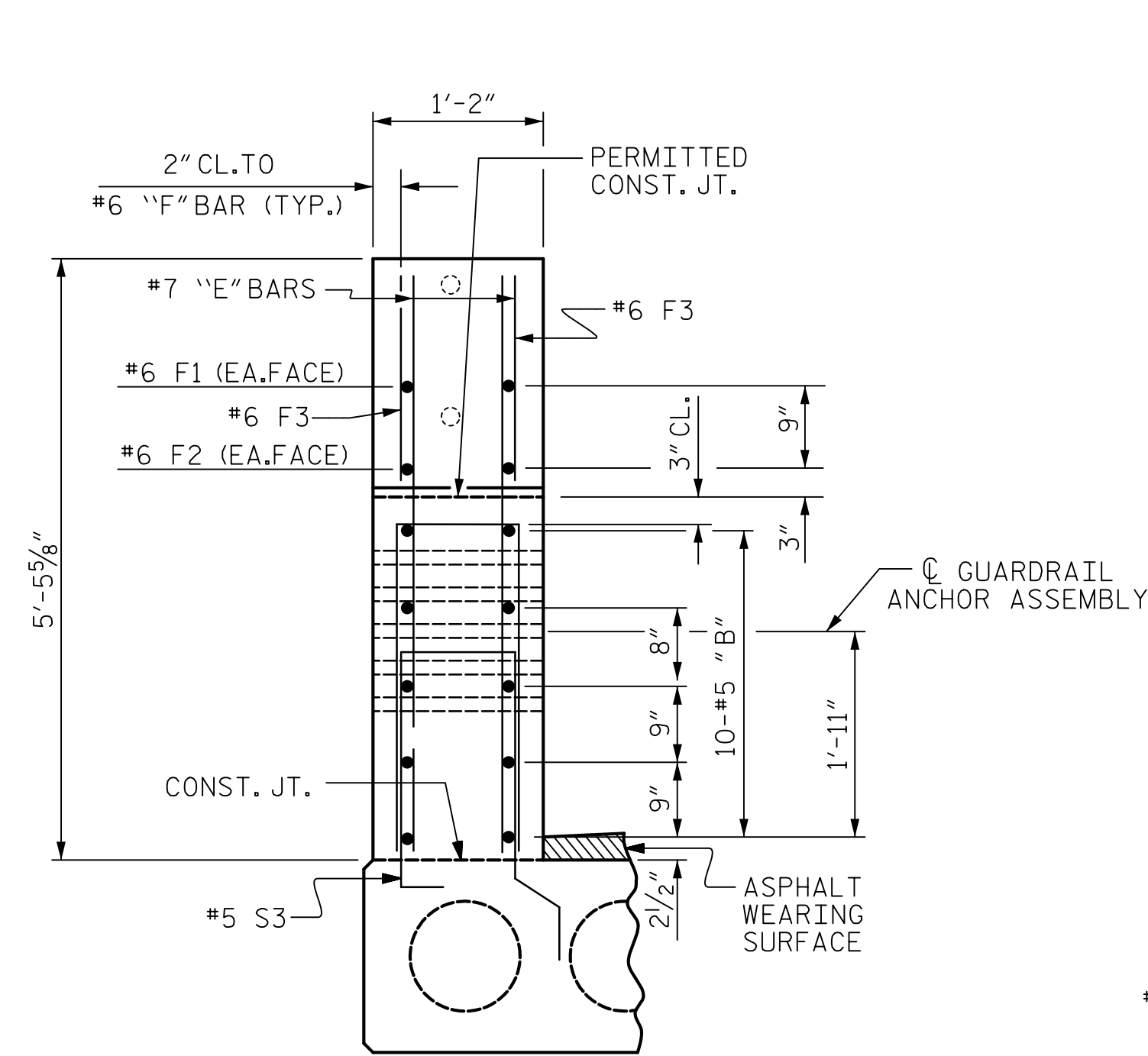
PLAN OF END POST



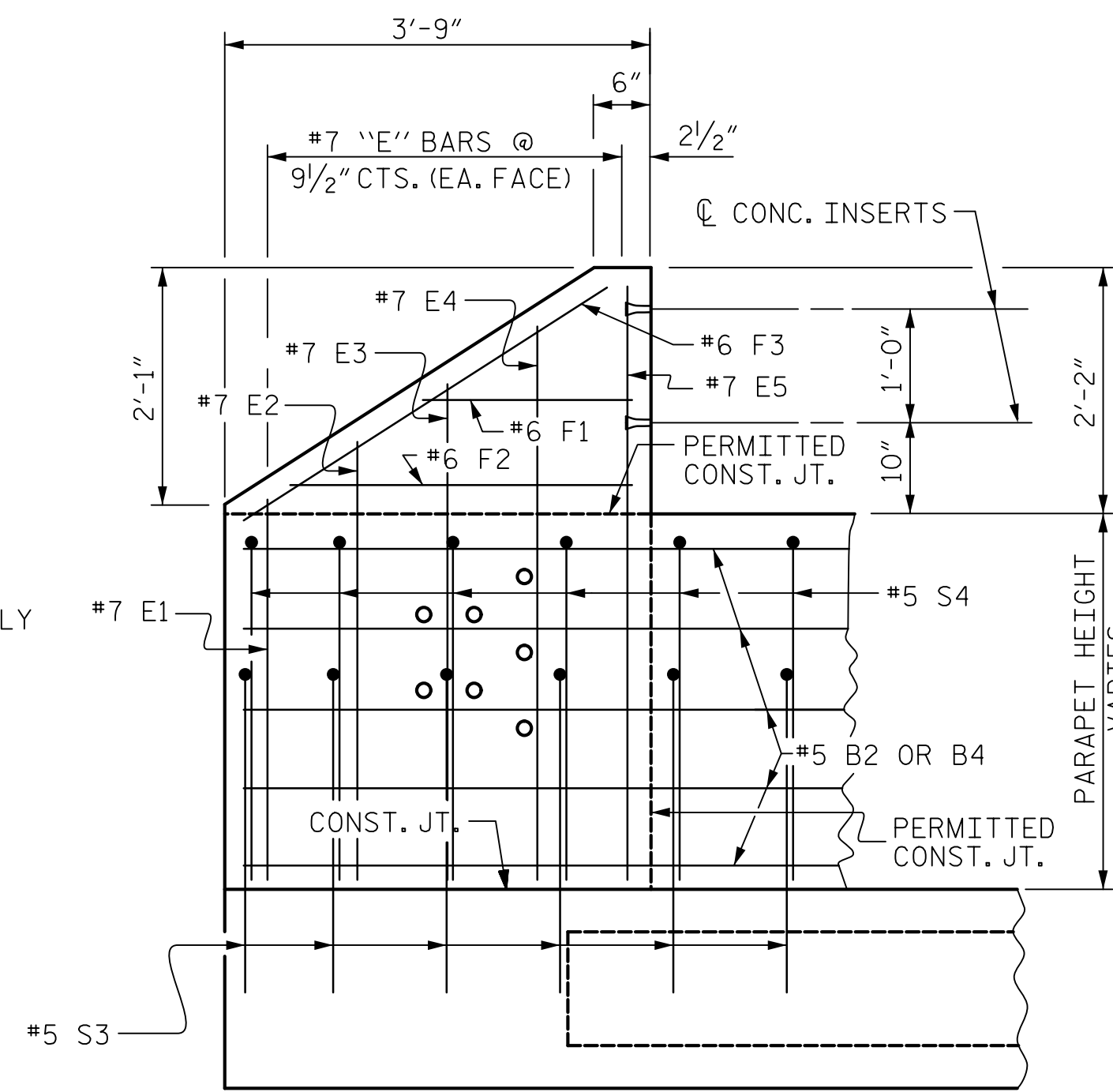
SECTION S-S  
AT DAM IN OPEN JOINT  
(THIS IS TO BE USED ONLY  
WHEN SLIP FORM IS USED)



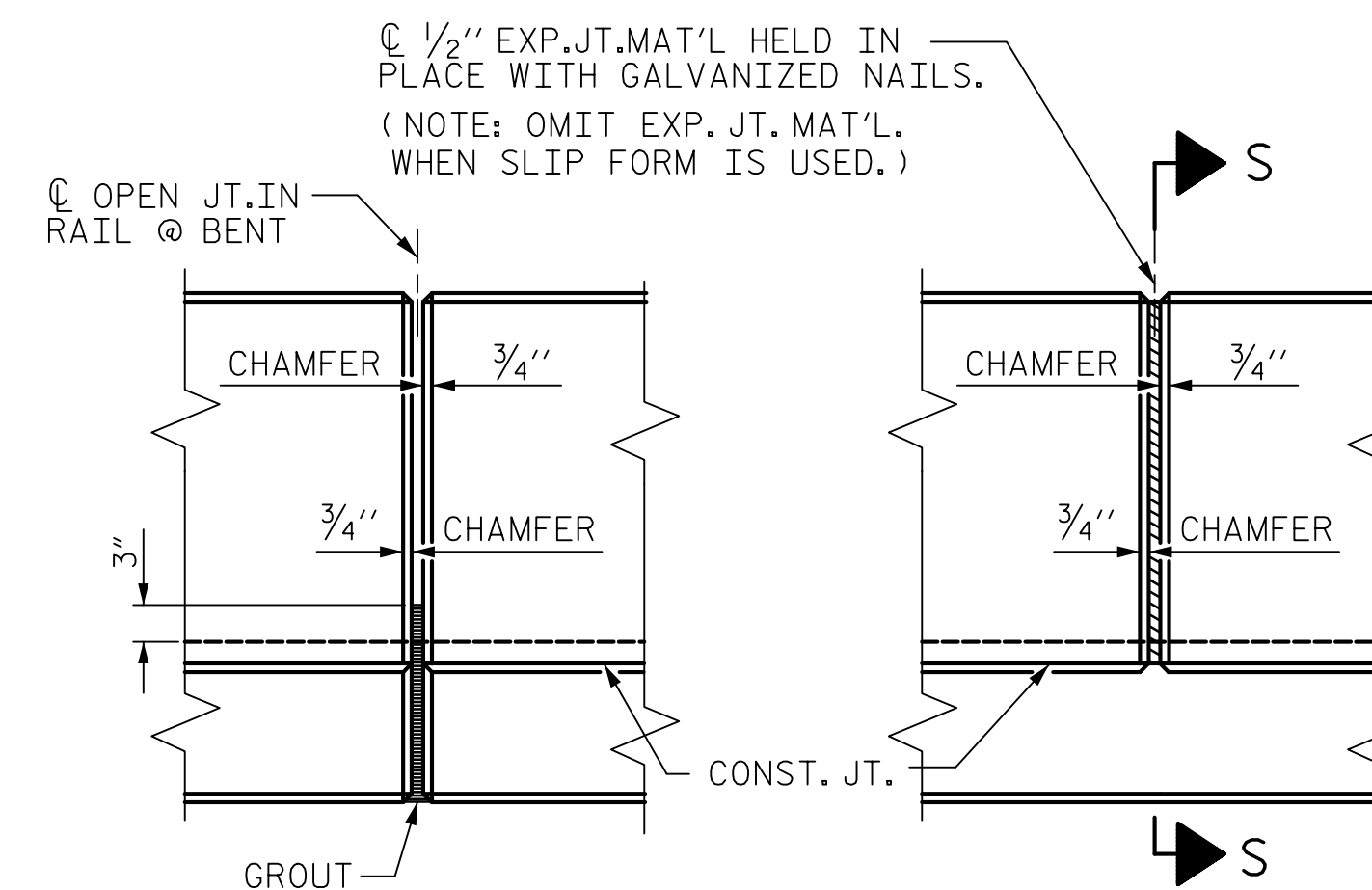
SECTION THROUGH PARAPET



END VIEW



ELEVATION

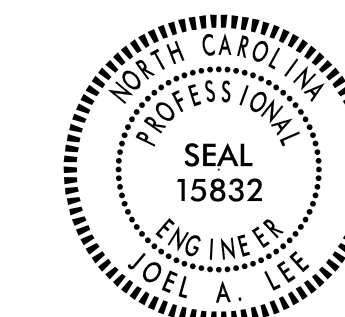


ELEVATION AT EXPANSION JOINTS

CONCRETE PARAPET DETAILS

**Mead & Hunt**

127 W. Hargett Street  
Suite 504  
Raleigh, NC 27601  
919-714-8670  
meadhunt.com  
NC License No. F-1235



PROJECT NO. B-4440  
BRUNSWICK COUNTY  
STATION: 18+90.36 -L-

STATE OF NORTH CAROLINA  
DEPARTMENT OF TRANSPORTATION  
RALEIGH

1'-2" X 3'-35/8"  
CONCRETE PARAPET  
AND END POSTS

DRAWN BY: J.S. HOBSON DATE: 2/16/15  
CHECKED BY: J.A. LEE DATE: 3/2/15  
DESIGN ENGINEER OF RECORD: J.A. LEE DATE: 3/2/15

DOCUMENT NOT CONSIDERED  
FINAL UNLESS ALL  
SIGNATURES COMPLETED

REVISIONS						SHEET NO.
NO.	BY:	DATE:	NO.	BY:	DATE:	5-12
1			3			TOTAL SHEETS
2			4			22