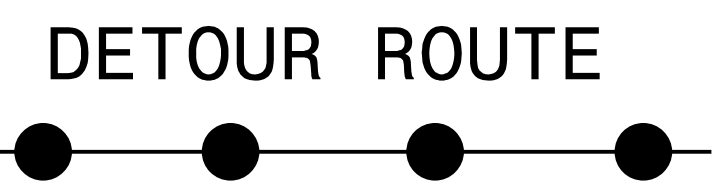


**B-4440  
PROJECT  
LOCATION**

INSET

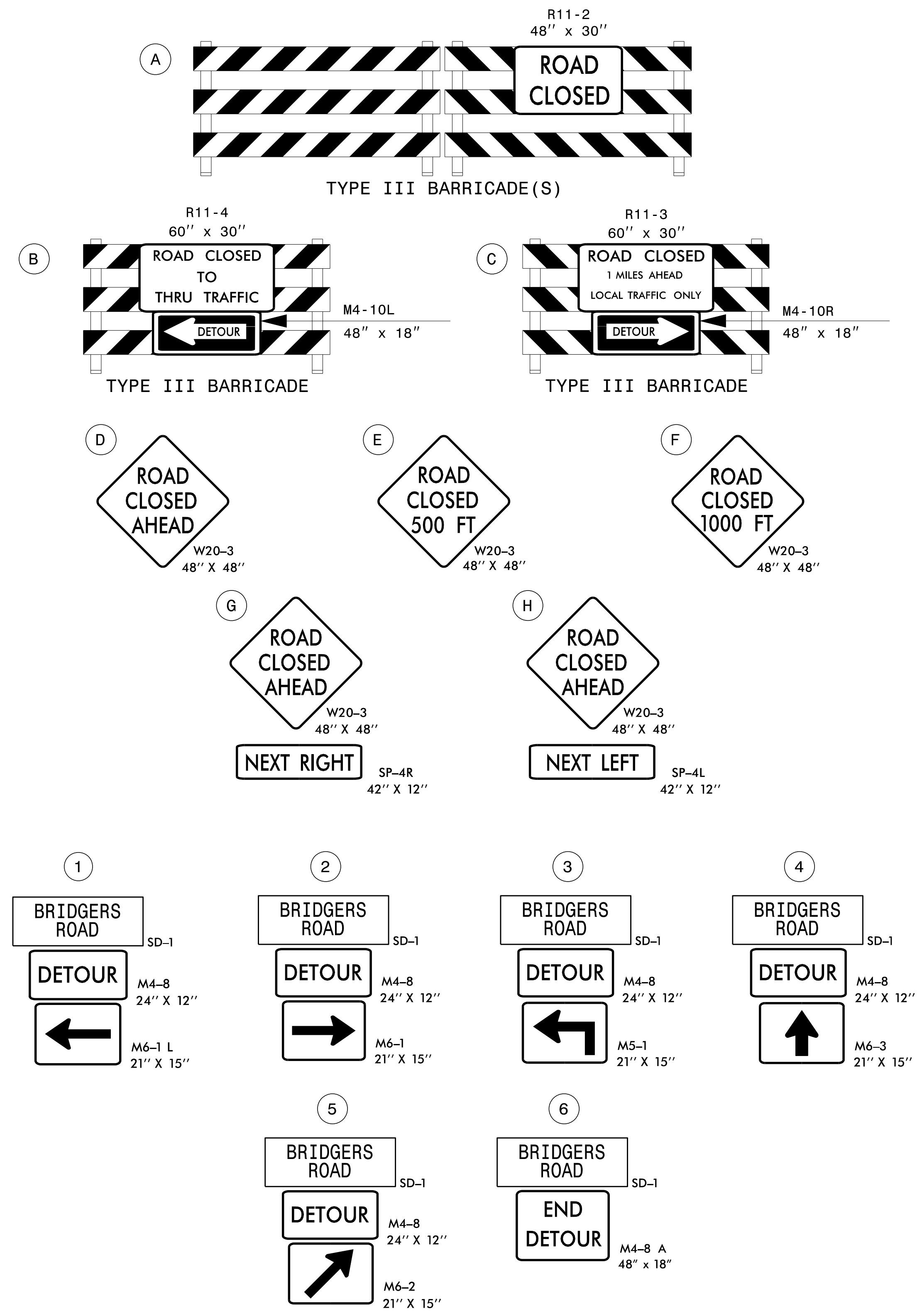


**LEGEND**

- TRAFFIC CONTROL DEVICES**
- BARRICADE (TYPE III)
- TEMPORARY SIGNING**
- STATIONARY SIGN

**NOTES:**  
TRAFFIC CONTROL DEVICES (A) THROUGH (H) SHALL BE INSTALLED ACCORDING TO RSD 1101.03, SHEET 1 OF 9

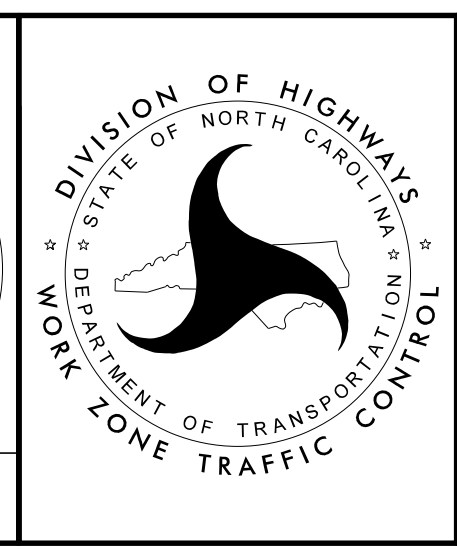
TRAFFIC CONTROL DEVICES (1) THROUGH (6) SHALL BE INSTALLED AS SHOW ON PLAN OR AS DIRECTED BY THE ENGINEER



APPROVED: *Don A. Parker*  
DATE: 5/3/2016

SEAL  
043251  
ENGINEER  
DON A. PARKER

DOCUMENT NOT CONSIDERED FINAL  
UNLESS ALL SIGNATURES COMPLETED



**ROAD CLOSURE  
AND  
OFF-SITE DETOUR**

5/3/2016 R:\TrafficControl\CP\B-4440\_TC\_TMP\_3.dgn User:rsb|ennings