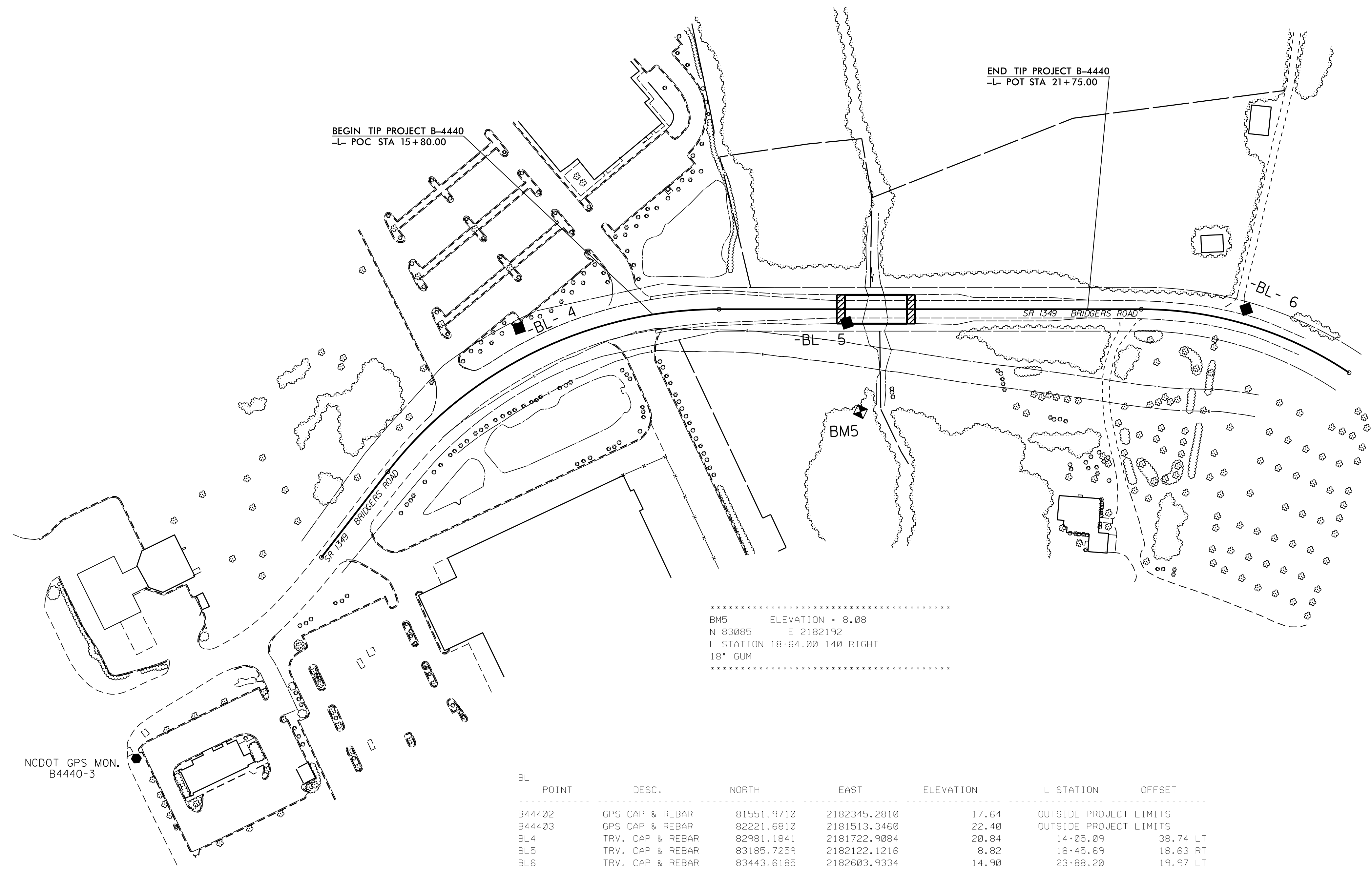
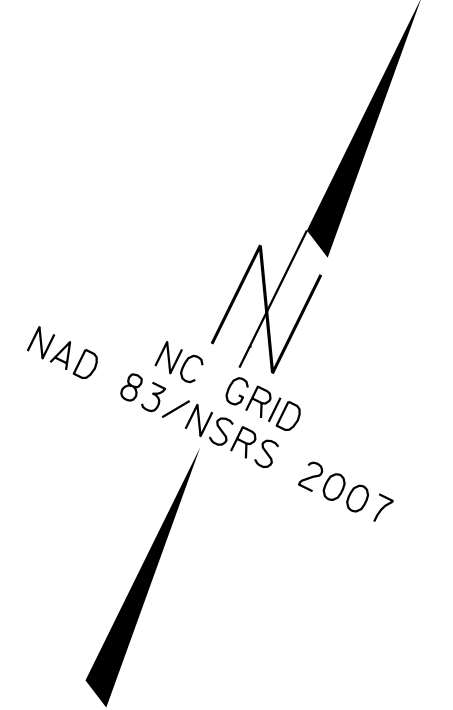


SURVEY CONTROL SHEET B-4440



BM5 ELEVATION = 8.08
 N 83085 E 2182192
 L STATION 18+64.00 140 RIGHT
 18" GUM

NCDOT GPS MON.
B4440-3

NCDOT GPS MON.
B4440-2

DATUM DESCRIPTION
 THE LOCALIZED COORDINATE SYSTEM DEVELOPED FOR THIS PROJECT IS BASED ON THE STATE PLANE COORDINATES ESTABLISHED BY NCDOT FOR MONUMENT "B4440-3" WITH NAD 83/NSRS 2007 STATE PLANE GRID COORDINATES OF NORTHING: 82221.681(±) EASTING: 2181513.346(±) ELEVATION: 22.395(±)
 THE AVERAGE COMBINED GRID FACTOR USED ON THIS PROJECT (GROUND TO GRID) IS: 1.0001233652
 THE N.C. LAMBERT GRID BEARING AND LOCALIZED HORIZONTAL GROUND DISTANCE FROM "B4440-3" TO -L- L STATION 10+00.00 IS N 16°24'46" E 374.06'
 ALL LINEAR DIMENSIONS ARE LOCALIZED HORIZONTAL DISTANCES VERTICAL DATUM USED IS NAVD 88

NOTE: DRAWING NOT TO SCALE

- NOTES:**
- THE CONTROL DATA FOR THIS PROJECT CAN BE FOUND ELECTRONICALLY BY SELECTING PROJECT CONTROL DATA AT:
[HTTPS://CONNECT.NCDOT.GOV/RESOURCES/LOCATION](https://connect.ncdot.gov/resources/location)
 THE FILES TO BE FOUND ARE AS FOLLOWS:
 B4440_LS_CONTROL.TXT
 SITE CALIBRATION INFORMATION HAS NOT BEEN PROVIDED FOR THIS PROJECT IF FURTHER INFORMATION IS NEEDED, PLEASE CONTACT THE LOCATION AND SURVEYS UNIT.
 © INDICATES GEODETIC CONTROL MONUMENTS USED OR SET FOR HORIZONTAL PROJECT CONTROL BY THE NCDOT LOCATION AND SURVEYS UNIT.
 PROJECT CONTROL ESTABLISHED USING GLOBAL POSITIONING SYSTEM.
 NETWORK ESTABLISHED FROM EXISTING HARN MONUMENTATION
 SEE GPS CALIBRATION SHEET FOR HORIZONTAL AND VERTICAL COORDINATE VALUES.

03-MAY-2016 09:24
 R:\LocationSurveys\B4440_LS_1C-1.dgn
 \$\$\$LISFRM\$\$\$