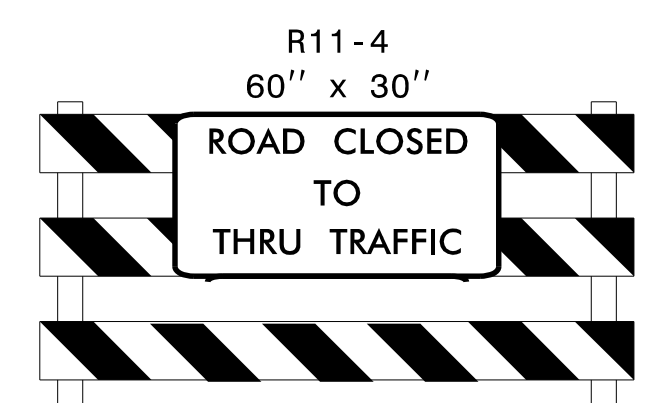
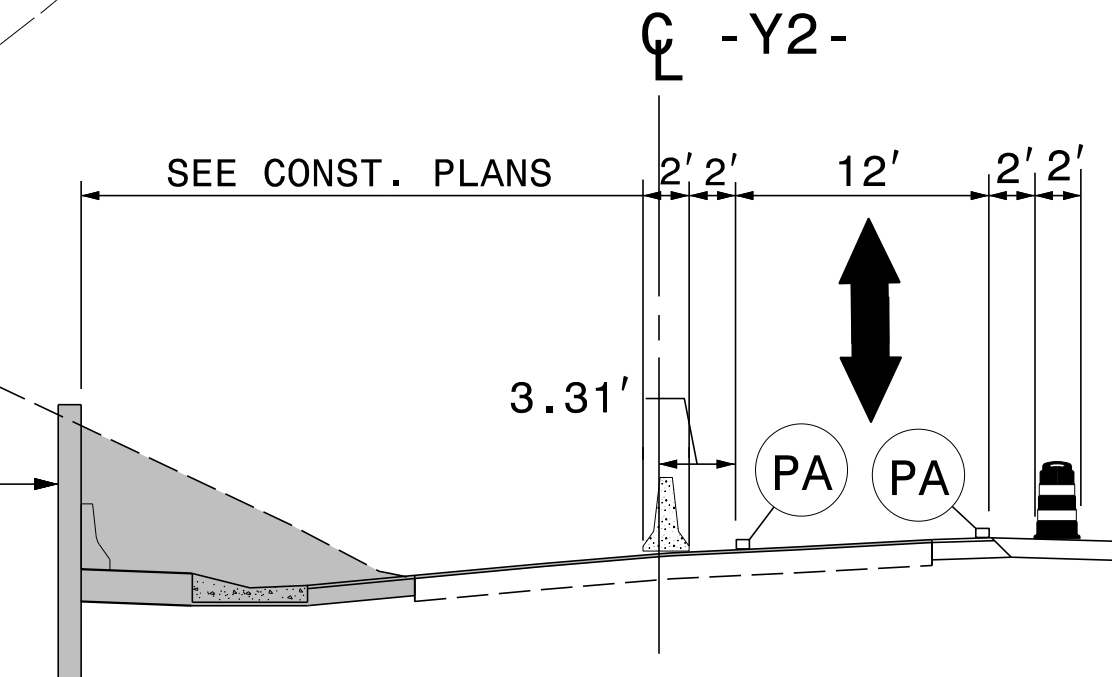


SECTION A-A



TYPE III BARRICADE
(NOTE: PLACE ANOTHER SET OF BARRICADES & SIGN SIMILARLY ON BALL PARK RD AT GRANDVIEW DR)

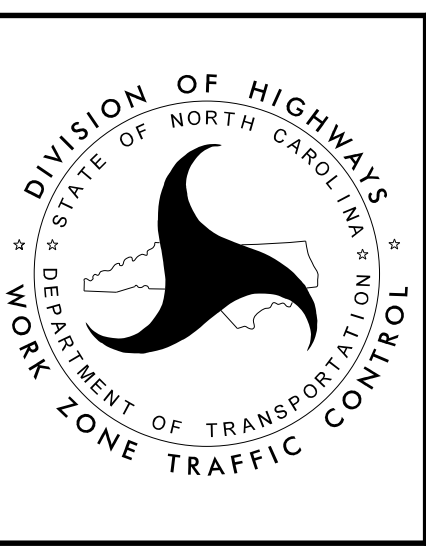


SECTION B-B

APPROVED: *[Signature]*
DATE: 6/3/2016

SEAL 019862
ENGINEER
J.W. WOOLARD JR.

DOCUMENT NOT CONSIDERED FINAL UNLESS ALL SIGNATURES COMPLETED



PHASE II DETAILS

DEPARTMENT OF TRANSPORTATION
NORTH CAROLINA
WORK ZONE TRAFFIC CONTROL

5/27/2016 0:\Division\N4060\TrafficControl\TC_TMP-7_DETAIL.dgn User:Kbrodwell