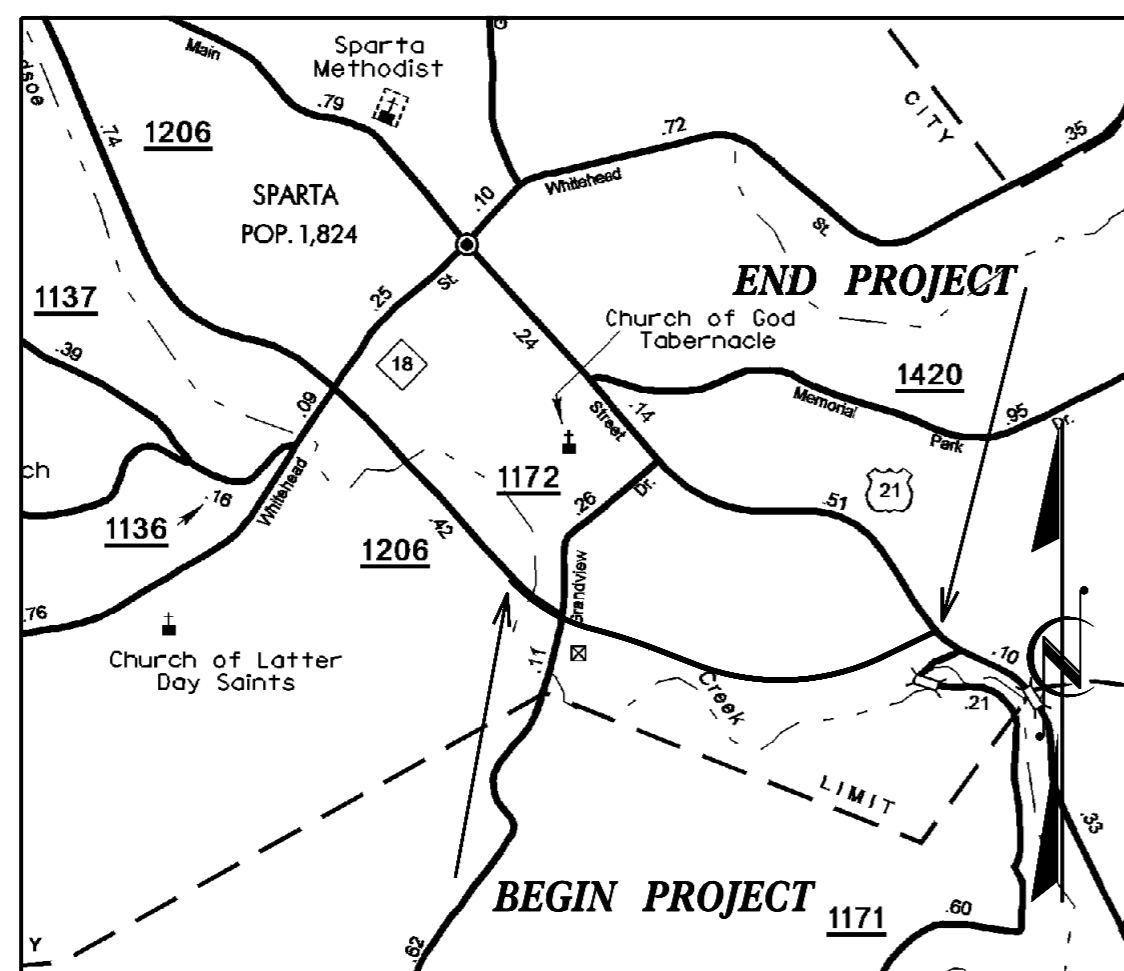


SURVEY CONTROL SHEET R-4060



VICINITY MAP

BL POINT	DESC.	NORTH	EAST	ELEVATION	L STATION	OFFSET	BY1 POINT	DESC.	NORTH	EAST	ELEVATION	Y1 STATION	OFFSET
R40602	GPS R4060-2	1007235.1110	1376947.6230	2795.85	13+34.45	19.55 RT	BY115	BY1-15	1006922.7150	1379285.8980	2848.13	16+51.48	13.49 RT
BL5	BL-5	1006886.7540	1377344.2750	2810.32	18+35.58	97.09 RT	BY116	BY1-16	1006699.7990	1379356.2800	2825.94	18+83.14	12.31 LT
BL6	BL-6	1006897.8710	1377641.0200	2837.71	21+10.26	2.06 RT	BY117	BY1-17	1006503.4650	1379409.7900	2795.13	20+85.39	13.53 RT
BL7	BL-7	1006566.7710	1378450.0300	2835.17	29+76.15	57.87 RT	BY118	BY1-18	1006492.4750	1379605.5690	2766.58	22+75.74	10.14 RT
BL8	BL-8	1006534.4370	1378951.0460	2840.48	34+60.80	69.01 RT							
BL9	BL-9	1006699.7990	1379356.2800	2825.94	38+85.30	4.84 RT							
BL10	BL-10	1006732.6180	1379474.5350	2821.78	40+05.83	22.12 RT							
BL11	BL-11	1006887.8450	1379861.8160	2780.92	44+22.10	50.43 RT							

BY POINT	DESC.	NORTH	EAST	ELEVATION	Y STATION	OFFSET	BY2 POINT	DESC.	NORTH	EAST	ELEVATION	Y2 STATION	OFFSET
BY12	BY-12	1007472.1880	1377315.6580	2825.05	OUTSIDE PROJECT LIMITS		BY219	BY2-19	1007261.1710	1379646.6410	2789.34	12+65.64	18.67 LT
BY13	BY-13	1006886.7540	1377344.2750	2810.32	13+33.41	54.03 LT	BY220	BY2-20	1006887.8450	1379861.8160	2780.92	16+93.23	19.28 RT
BY14	BY-14	1006473.0730	1377168.4900	2803.73	OUTSIDE PROJECT LIMITS		BY221	BY2-21	1006708.3600	1380093.3540	2777.60	19+79.88	21.54 RT

.....
 BM*1 ELEVATION = 2801.73'
 N 1007114. E 1377265.
 BY STATION 8+55.00 68' RIGHT
 8" SPIKE IN ROOT OF 12" WILD CHERRY

.....
 BM*2 ELEVATION = 2795.14'
 N 1006373. E 1379222.
 BL STATION 28+91.00 252' RIGHT
 8" SPIKE IN ROOT OF 10" WILD CHERRY

.....
 BM*3 ELEVATION = 2770.85'
 N 1007014. E 1379952.
 BY2 STATION 8+67.00 141' LEFT
 8" SPIKE IN ROOT OF 12" MAPLE

NC DOT STATION R4060-1
 LOCALIZED PROJECT COORDINATES
 N = 1008229.0310
 E = 1376039.7990

BEGIN TIP PROJECT R-4060
 -L- POT STA. 10+00.00
 N = 1007495.2864
 E = 1376735.5464

NC DOT STATION R4060-2
 LOCALIZED PROJECT COORDINATES
 N = 1007235.1110
 E = 1376947.6230

BEGIN TIP PROJECT R-4060
 -Y- POT STA. 10+00.00
 N = 1007230.4214
 E = 1377323.3753

END TIP PROJECT R-4060
 -Y- POT STA. 14+50.00
 N = 1006786.2858
 E = 1377263.6047

BEGIN TIP PROJECT R-4060
 -Y1- POC STA. 16+90.00
 N = 1006886.1674
 E = 1379304.5946

END TIP PROJECT R-4060
 -Y- POC STA. 20+45.00
 N = 1006542.2129
 E = 1379387.4105

BEGIN TIP PROJECT R-4060
 -Y2- POT STA. 13+00.00
 N = 1007222.2675
 E = 1379650.6398

END TIP PROJECT R-4060
 -Y2- POC STA. 22+00.00
 N = 1006640.4818
 E = 1380304.7313

NC DOT STATION R4060-3
 LOCALIZED PROJECT COORDINATES
 N = 1004443.4930
 E = 1381348.2630

NC DOT STATION R4060-4
 LOCALIZED PROJECT COORDINATES
 N = 1003619.0960
 E = 1382478.8190

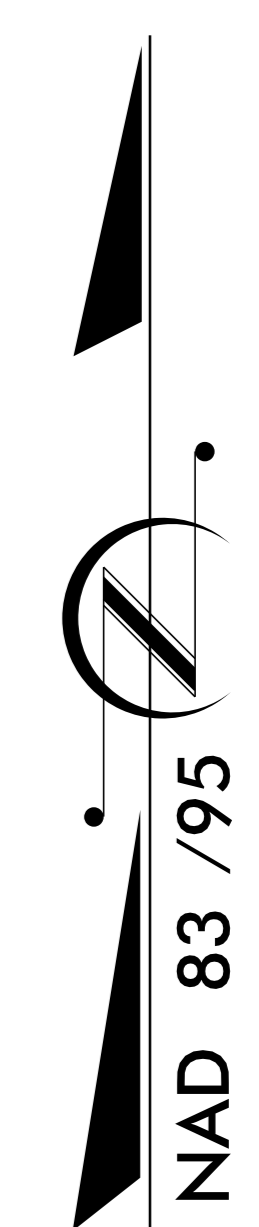
END TIP PROJECT R-4060
 -L- POT STA. 44+30.00
 N = 1006936.7057
 E = 1379847.0298

DATUM DESCRIPTION

THE LOCALIZED COORDINATE SYSTEM DEVELOPED FOR THIS PROJECT IS BASED ON THE STATE PLANE COORDINATES ESTABLISHED BY NCDOT FOR MONUMENT "R4060-2"
 WITH NAD 83/95 STATE PLANE GRID COORDINATES OF
 NORTHING: 1007235.1111(ft) EASTING: 1376947.623(ft)
 ELEVATION: 2795.85(ft)
 THE AVERAGE COMBINED GRID FACTOR USED ON THIS PROJECT (GROUND TO GRID) IS: 0.99997752
 THE N.C. LAMBERT GRID BEARING AND LOCALIZED HORIZONTAL GROUND DISTANCE FROM "R4060-2" TO -L- STATION 10+00.00 IS
 N 39°11'04" W 335.66'
 ALL LINEAR DIMENSIONS ARE LOCALIZED HORIZONTAL DISTANCES
 VERTICAL DATUM USED IS NAVD 88

NOTE: DRAWING NOT TO SCALE

- NOTES:
- THE SITE CALIBRATION SHOWN IS BASED UPON A NETWORK TIED TO THE HARN (HIGH ACCURACY REFERENCE NETWORK) NAD 83/95 ADJUSTMENT. THIS CALIBRATION WILL ALLOW THE END USER TO WORK WITHIN THE SAME COORDINATE SYSTEM WHEN USING RTK (REAL TIME KINEMATIC), GPS AND A LOCAL BASE STATION. IF ANOTHER SYSTEM SUCH AS VRS (VIRTUAL REFERENCE STATION) IS USED, ADDITIONAL FIELD TIES MAY BE NEEDED TO REDUCE POSSIBLE ERRORS, OR BIASES.
 - THE CONTROL DATA FOR THIS PROJECT CAN BE FOUND ELECTRONICALLY BY SELECTING PROJECT CONTROL DATA AT:
[HTTPS://CONNECT.NCDOT.GOV/RESOURCES/LOCATION/](https://connect.ncdot.gov/resources/location/)
 THE FILES TO BE FOUND ARE AS FOLLOWS:
 R4060_IS_GPSCALIB.HTML
 R4060_IS_CONTROL.TXT
 IF FURTHER INFORMATION IS NEEDED, PLEASE CONTACT THE LOCATION AND SURVEYS UNIT.
- © INDICATES GEODETIC CONTROL MONUMENTS USED OR SET FOR HORIZONTAL PROJECT CONTROL BY THE NCDOT LOCATION AND SURVEYS UNIT.
 PROJECT CONTROL ESTABLISHED USING GLOBAL POSITIONING SYSTEM.
 NETWORK ESTABLISHED FROM EXISTING HARN MONUMENTATION
 SEE GPS CALIBRATION SHEET FOR HORIZONTAL AND VERTICAL COORDINATE VALUES.



6/2/09

D:\JUN-2016\1126\Surveys\4060_1s_1c-1.dgn