

See Sheet 1-A For Index of Sheets

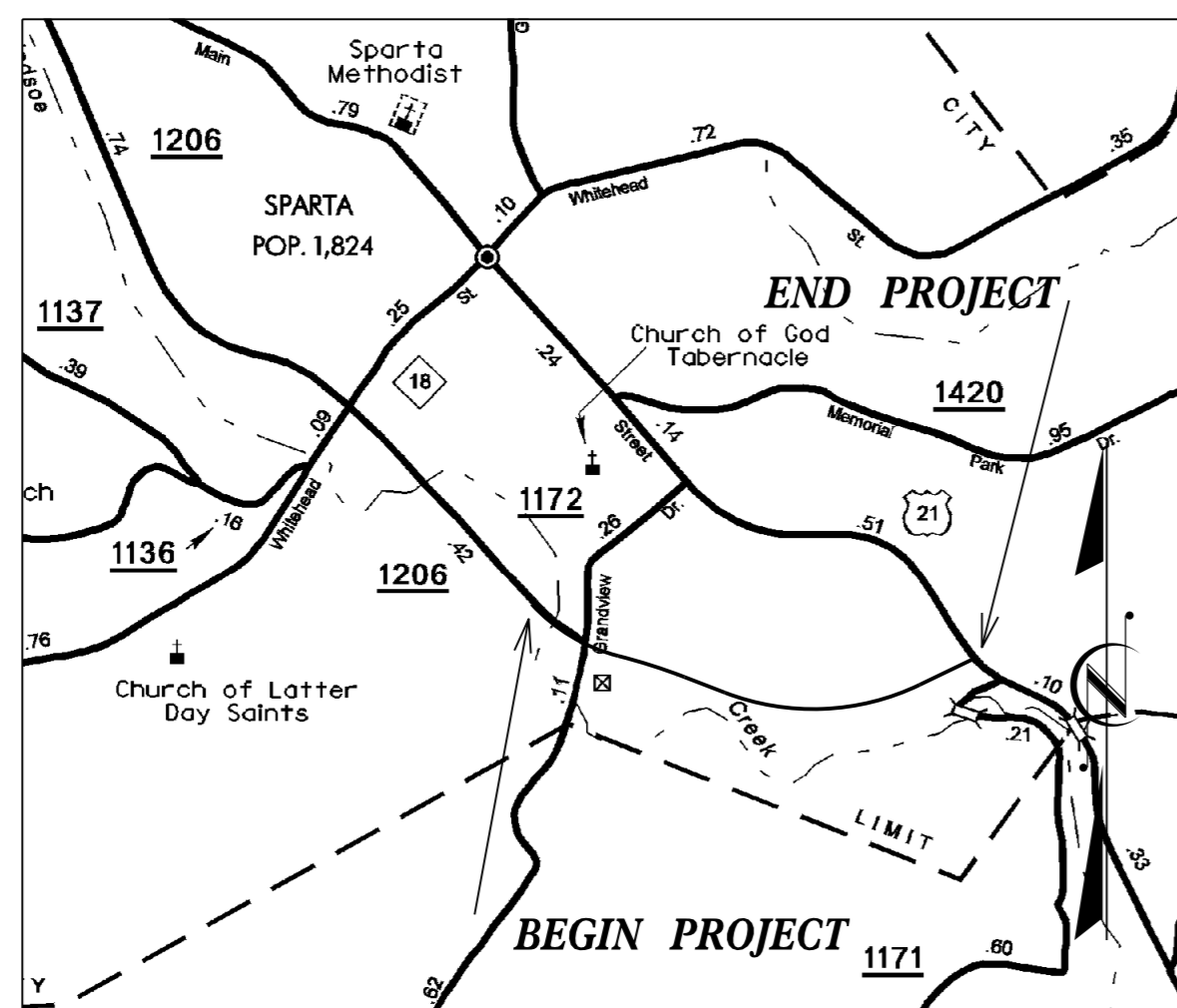
STATE OF NORTH CAROLINA
DIVISION OF HIGHWAYS

ALLEGHANY COUNTY

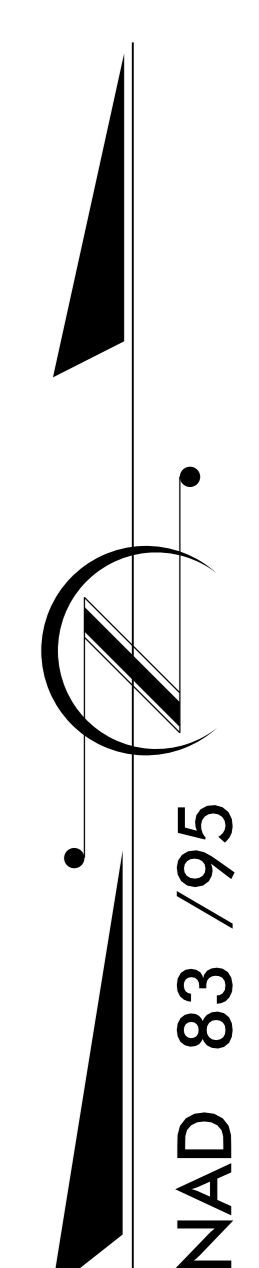
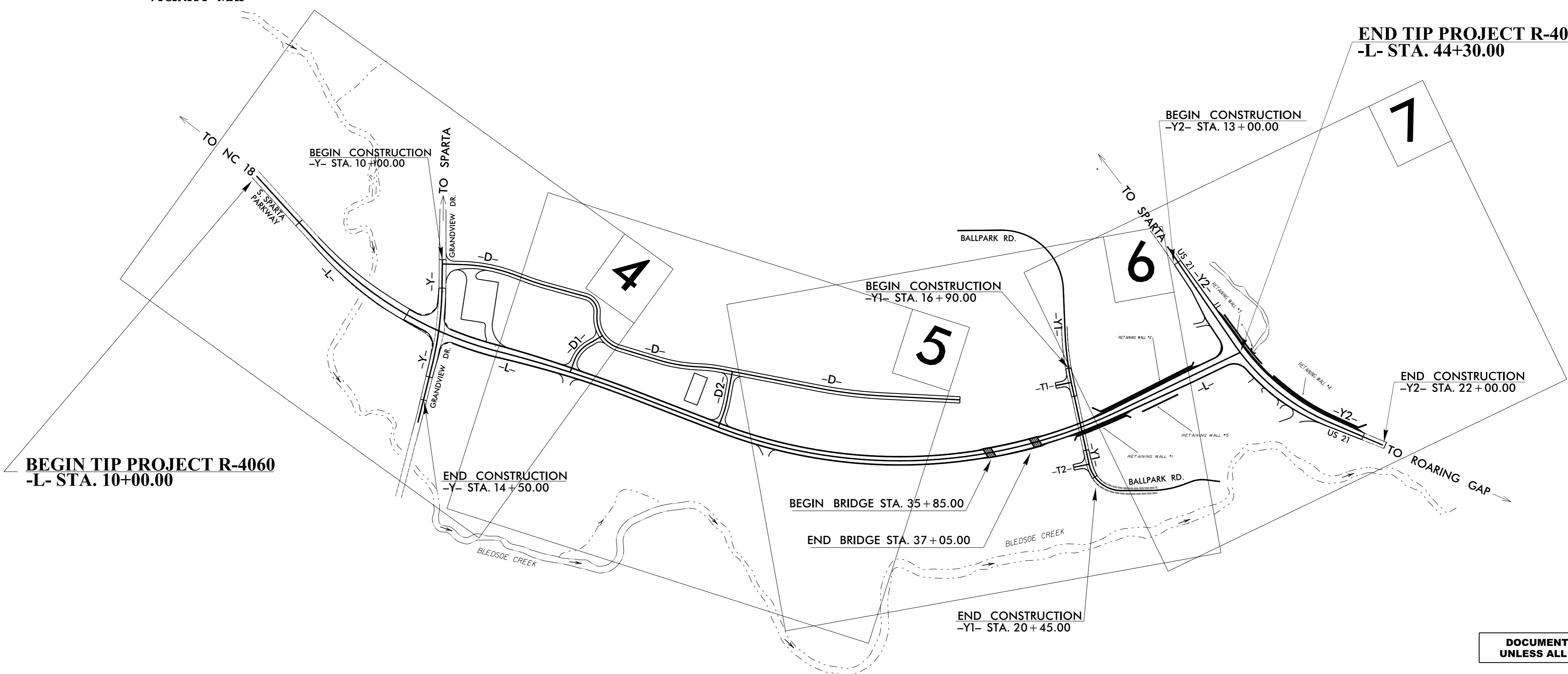
LOCATION: US 21 (SPARTA WESTERN LOOP) FROM
SR 1172 (GRANDVIEW DR.) TO US 21

TYPE OF WORK: GRADING, DRAINAGE, PAVING, RETAINING WALLS,
AND STRUCTURES

STATE	STATE PROJECT REFERENCE NO.	SHEET NO.	TOTAL SHEETS
N.C.	R-4060	1	
STATE PROJ. NO.	F.A. PROJ. NO.	DESCRIPTION	
34605.1.2		PE	
34605.2.2		RW	
34605.2.RU1		UTIL	
34605.3.2		CONST	

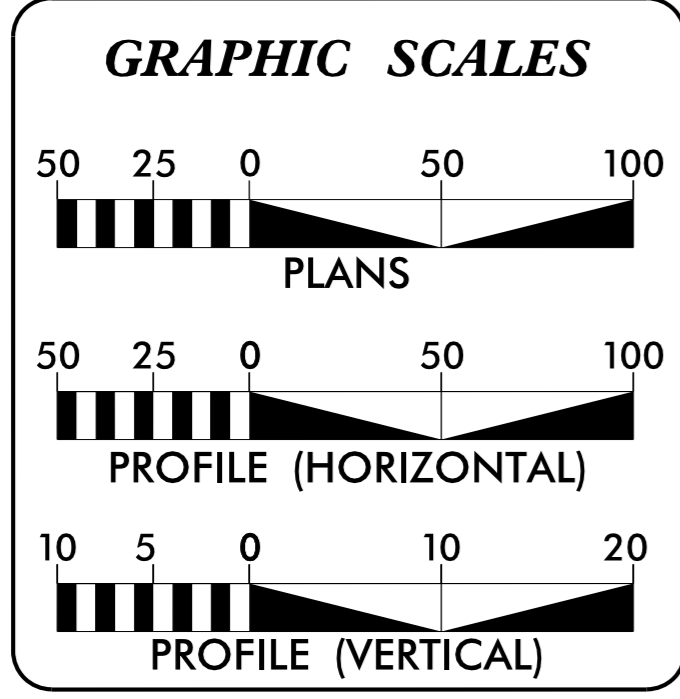


VICINITY MAP



DOCUMENT NOT CONSIDERED FINAL
UNLESS ALL SIGNATURES COMPLETED

CONTRACT: C203821 TIP PROJECT: R-4060



DESIGN DATA

ADT 2016 =	6,200
ADT 2030 =	8,800
DHV =	10 %
D =	55 %
T =	7 % *
V =	50 MPH
* TTST =	2 DUAL 5

**REGIONAL TIER DESIGN
FUNCTIONAL CLASSIFICATION:
RURAL COLLECTOR**

PROJECT LENGTH

PROJECT R-4060 ROADWAY LENGTH =	0.627 MI
PROJECT R-4060 BRIDGE LENGTH =	0.023 MI
PROJECT R-4060 TOTAL LENGTH =	0.650 MI

Prepared in the Office of:
DIVISION OF HIGHWAYS
801 STATESVILLE ROAD, NORTH WILKESBORO, N.C. 28659

2012 STANDARD SPECIFICATIONS

RIGHT OF WAY DATE:
August 21, 2015

LETTING DATE:
August 16, 2016

DIVISION ENGINEER
M.A. PETTYJOHN, PE

DocuSigned by:
M.A. Pettyjohn
6/21/2016

SIGNATURE DATE

HYDRAULICS ENGINEER
MARC T. SHOWN, PE

DocuSigned by:
Marc T. Shown
6/21/2016

SIGNATURE P.E.

DIVISION PROJECT MANAGER
JOSEPH L. LAWS, PE

DocuSigned by:
Joseph L. Laws
6/21/2016

SIGNATURE P.E.

21-JUN-2016 09:56 R:\R4060\Roadway - Revised\R-4060-ddc-fsh.dgn \$\$\$\$USERNAME\$\$\$