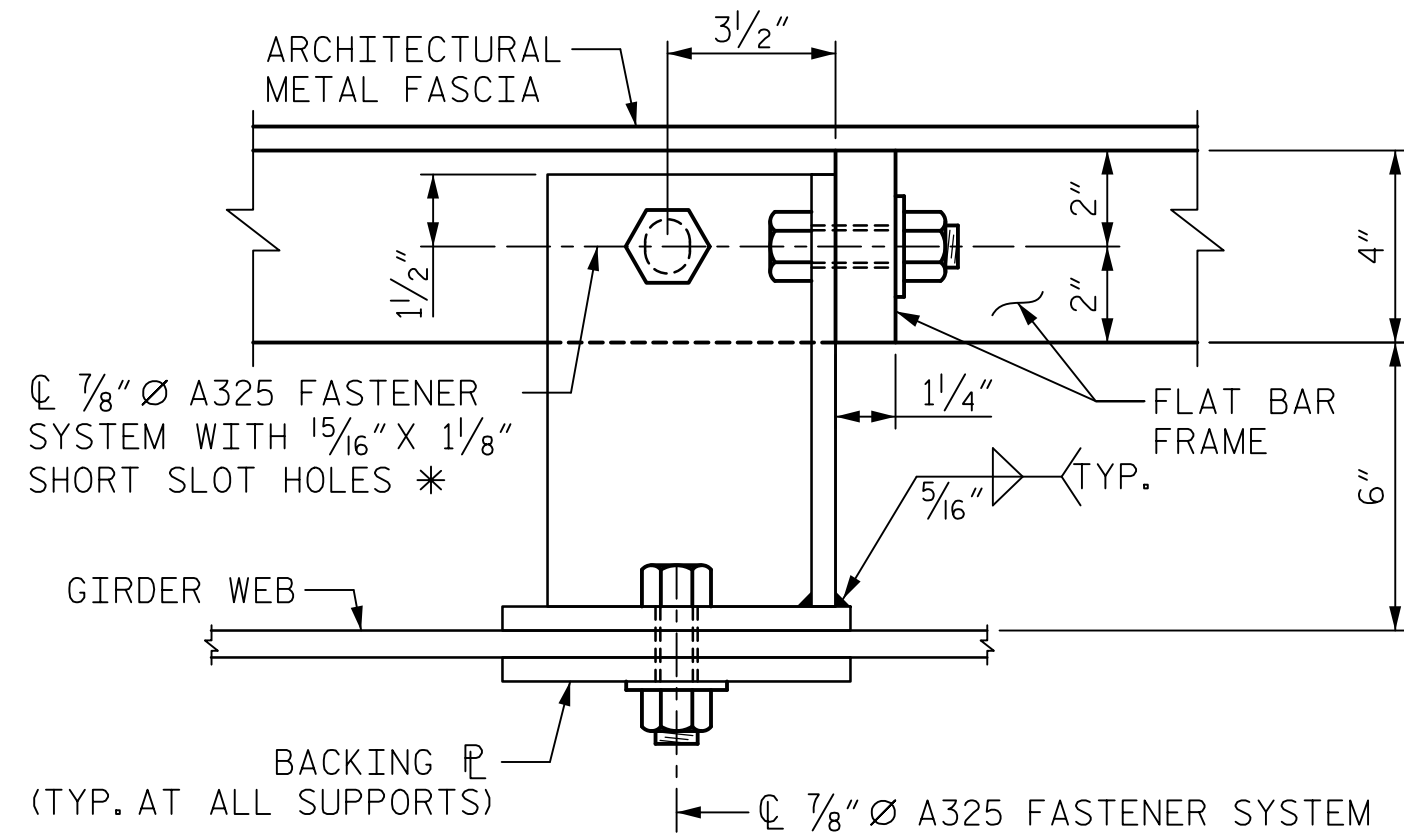
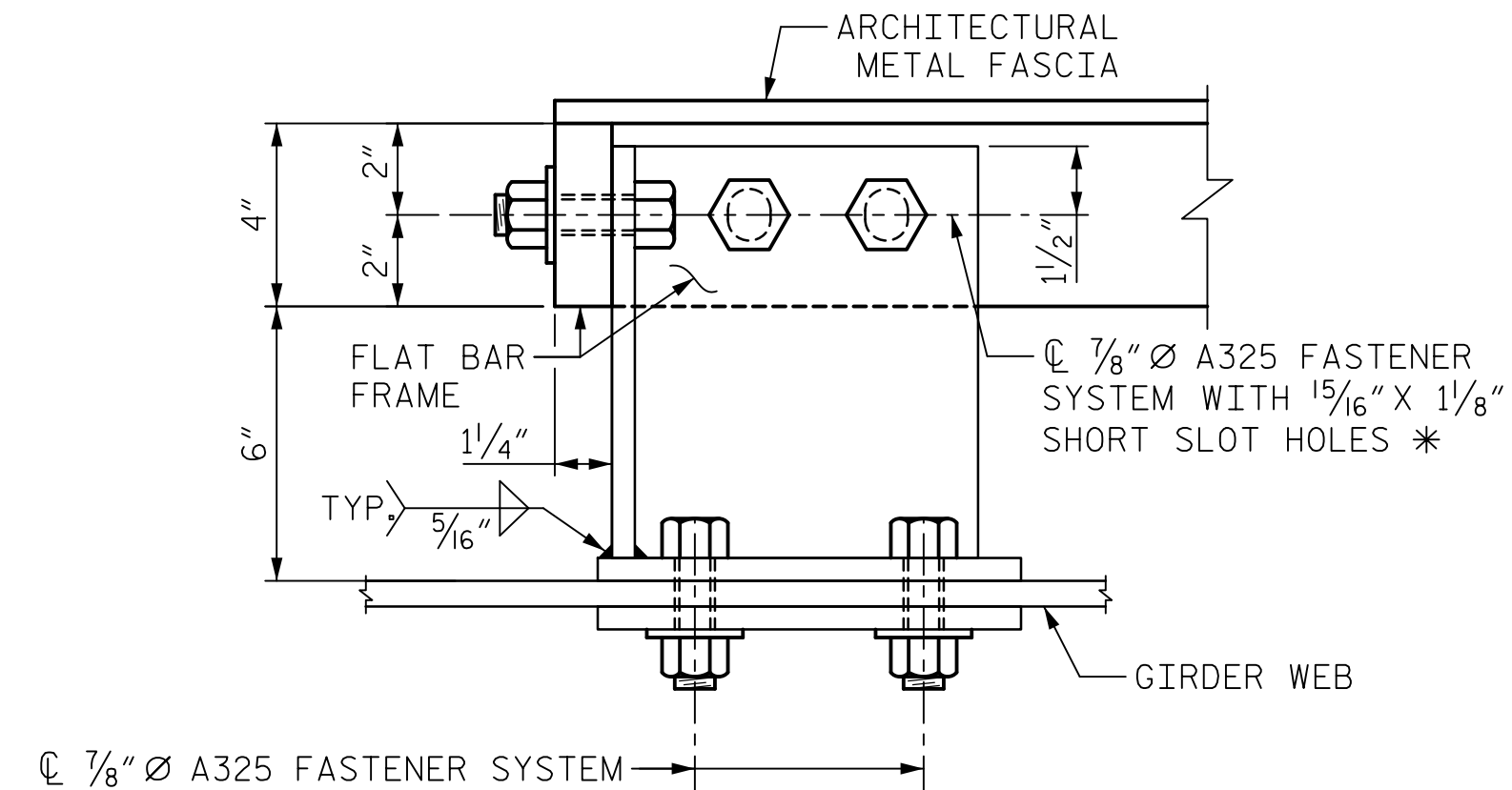


MID PANEL SUPPORT (MS1)

NOTE: UPPER MIDDLE SUPPORT BRACKET SHOWN, BRACKETS FOR LOWER MIDDLE SUPPORT SIMILAR. PANEL PLATE AND BOLT HOLES NOT SHOWN FOR CLARITY.



SECTION C-C

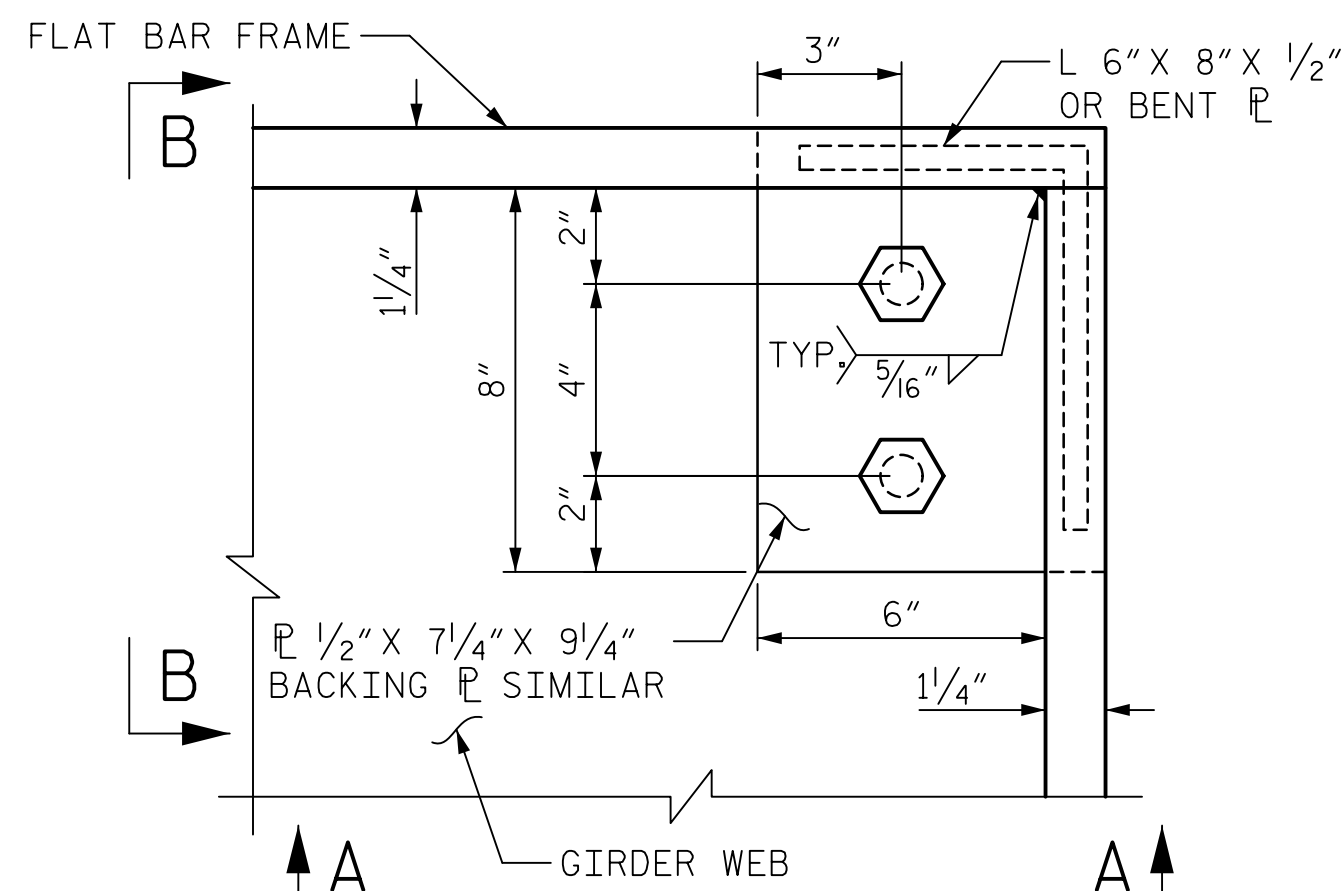


SECTION D-D

* SLOTTED HOLES ORIENTED PERPENDICULAR TO GIRDER WEB

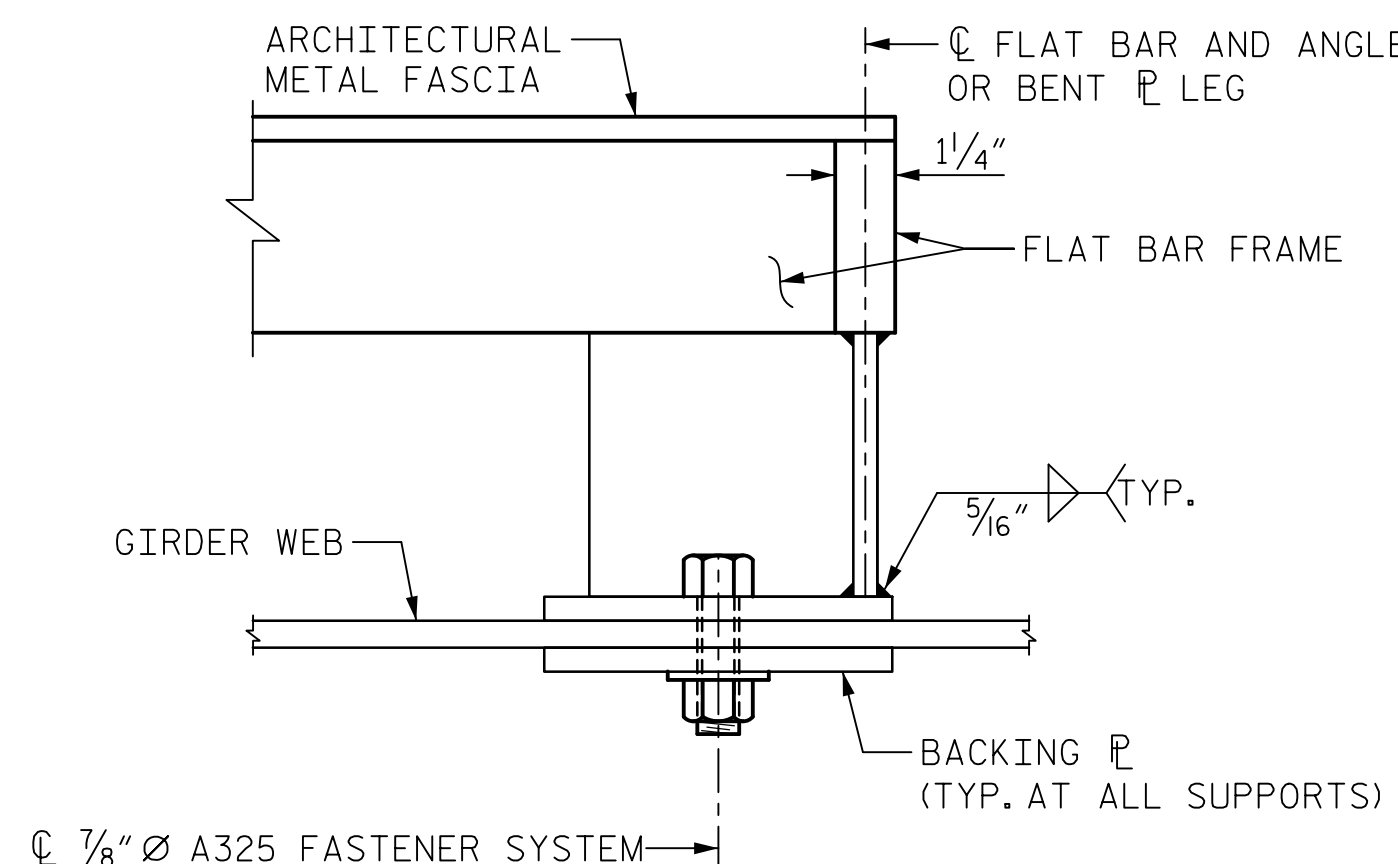
NOTES:
 FOR ARCHITECTURAL METAL FASCIA, SEE SPECIAL PROVISIONS
 ANCHOR BOLTS SHALL BE ASTM F593 ALLOY 304 STAINLESS STEEL WITH MINIMUM 75,000 PSI ULTIMATE STRENGTH. BOLTS TO BE EMBEDDED AS SHOWN. NUTS SHALL BE AMERICAN STANDARD FINISHED HEXAGON THICK, CLASS 2B THREAD, AND MEET THE REQUIREMENTS OF ASTM F594 ALLOY 304 STAINLESS STEEL. WASHERS SHALL MEET THE REQUIREMENTS OF ASTM F844 EXCEPT THEY SHALL BE MADE FROM ALLOY 304 STAINLESS STEEL.
 FOR ARCHITECTURAL METAL FASCIA LAYOUT SEE SHEETS S-110B AND S-110C.
 ALL HOLES FOR 7/8" Ø HIGH STRENGTH BOLTS ARE 1/16" Ø UNLESS NOTED OTHERWISE.
 NO WORK MAY BE STARTED ON FABRICATION OF ARCHITECTURAL METAL FASCIAS UNTIL VECTOR DRAWINGS OF THE ARTWORK HAVE BEEN OBTAINED FROM THE DEPARTMENT.

ARCHITECTURAL METAL FASCIA = 478.75 LIN. FT.

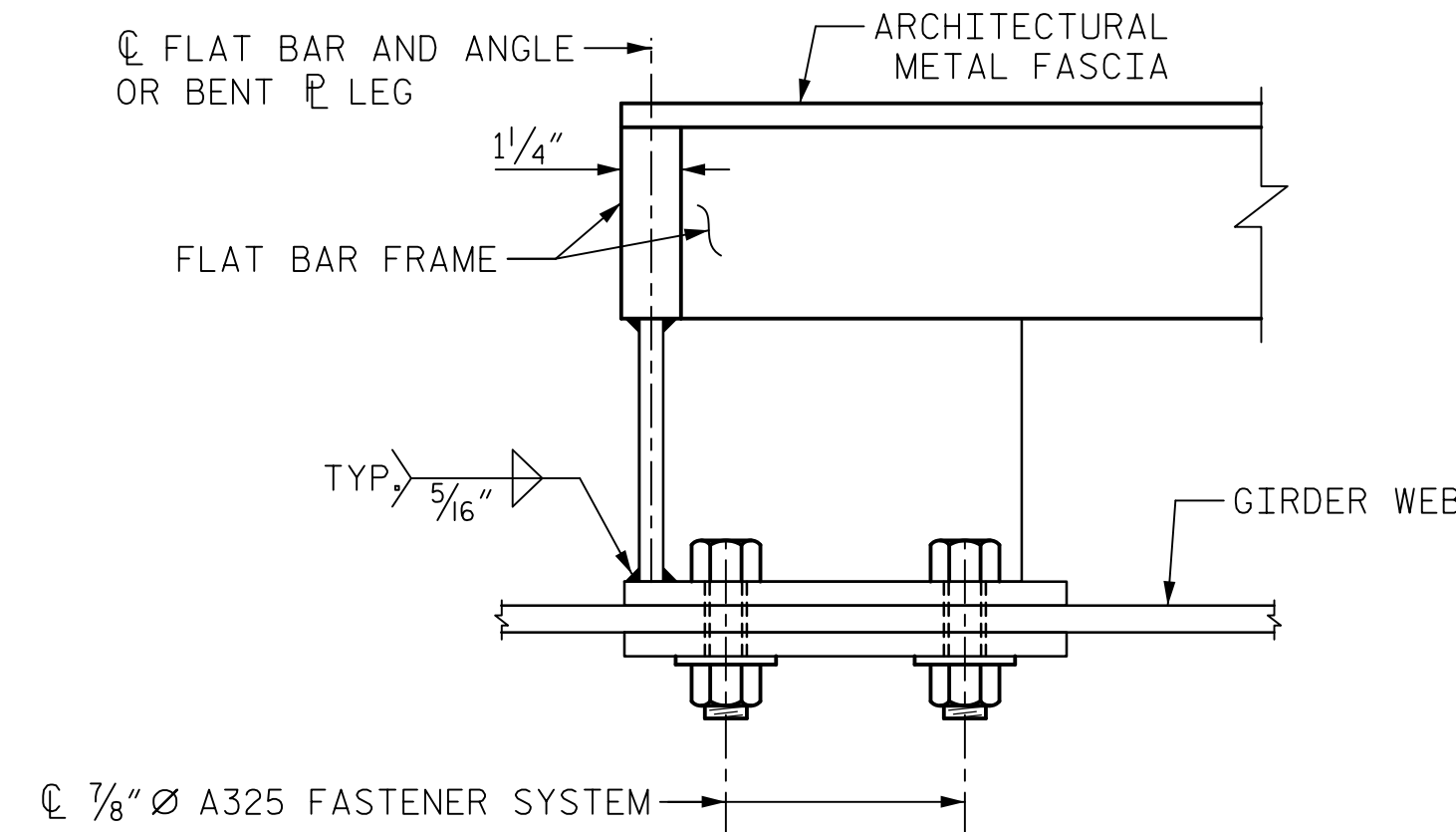


CORNER SUPPORT (CS1)

NOTE: UPPER CORNER SUPPORT BRACKET SHOWN, BRACKETS FOR OTHER THREE CORNERS SIMILAR. PANEL PLATE AND BOLT HOLES NOT SHOWN FOR CLARITY.



SECTION A-A



SECTION B-B

PROJECT NO. B-5121/B-5317
WAKE COUNTY
 STATION: 20+19.94 -FLYOVER-

SHEET 2 OF 2

DRAWN BY : K.H. COMPTON DATE : 4/2016
 CHECKED BY : A.S. MILLER DATE : 4/2016
 DESIGNED BY : G.L. HAMILTON DATE : 4/2016

DOCUMENT NOT CONSIDERED
 FINAL UNLESS ALL
 SIGNATURES COMPLETED

AECOM
AECOM TECHNICAL SERVICES, INC.
 701 CORPORATE CENTER DRIVE, SUITE 475
 RALEIGH, NC 27607
 (919) 854-6200 www.aecom.com
 AECOM License No. F-6342

6/2/2016

PROFESSIONAL SEAL
 038447
 ENGINEER
 ANDREW S. MILLER
DocuSign
 Andrew S. Miller
 CSD07672AC5E438...

STATE OF NORTH CAROLINA DEPARTMENT OF TRANSPORTATION RALEIGH					
ARCHITECTURAL METAL FASCIA DETAILS					
REVISIONS					
NO.	BY:	DATE:	NO.	BY:	DATE:
1			3		
2			4		
SHEET NO. S-110B					TOTAL SHEETS 110

DATE: 6/2/2016 TIME: 12:25:37 PM
 USER: P:\63492571_B-5121\400_Technical\408_Structural\Drawings\Wade_Ave\402_L0089_B-510_L_fascia_4.dgn