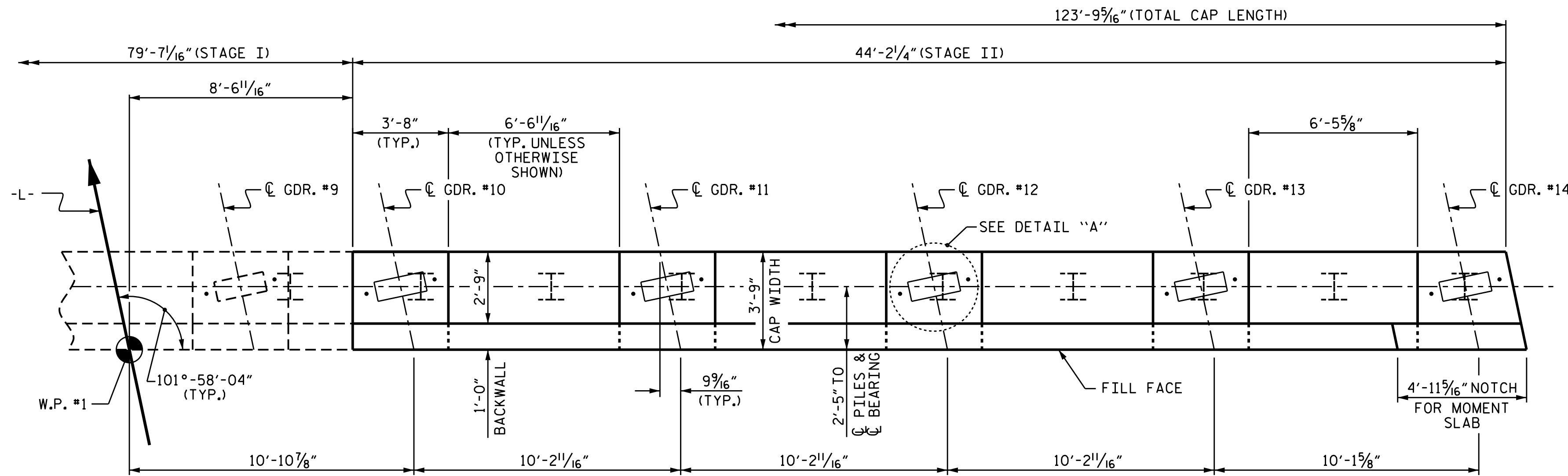
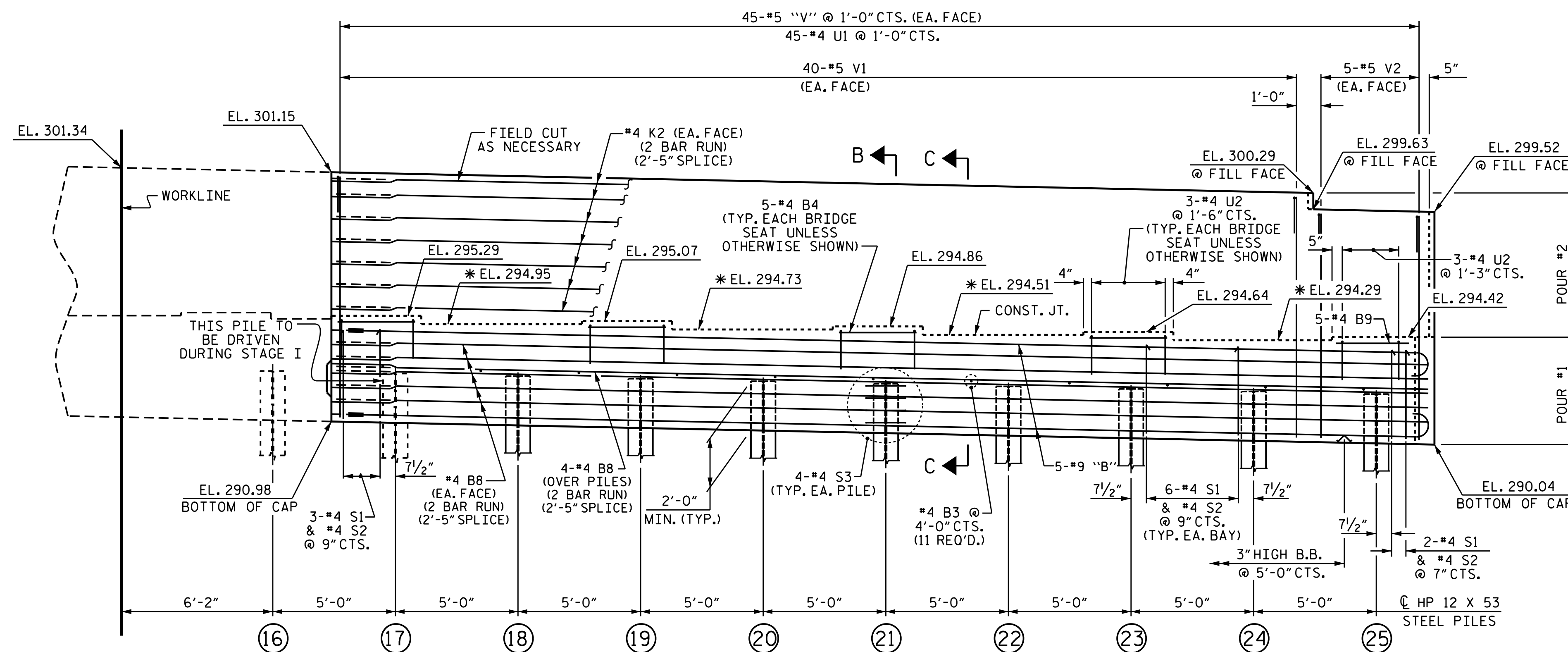


NOTES

STIRRUPS IN CAP MAY BE SHIFTED AS NECESSARY TO CLEAR ANCHOR BOLTS.
 BACKWALL SHALL BE PLACED BEFORE APPLYING THE EPOXY PROTECTIVE COATING.
 THE TOP SURFACE AREAS OF THE END BENT CAPS SHALL BE CURED IN ACCORDANCE WITH THE STANDARD SPECIFICATIONS EXCEPT THE MEMBRANE CURING COMPOUND METHOD SHALL NOT BE USED.
 THE TOP SURFACE OF THE CAP EXCEPT THE BRIDGE SEAT BUILDUPS SHALL BE SLOPED TRANSVERSELY FROM THE FILL FACE TO THE BACK FACE AT THE RATE OF 2%.
 FOR MSE RETAINING WALLS, SEE SPECIAL PROVISIONS.



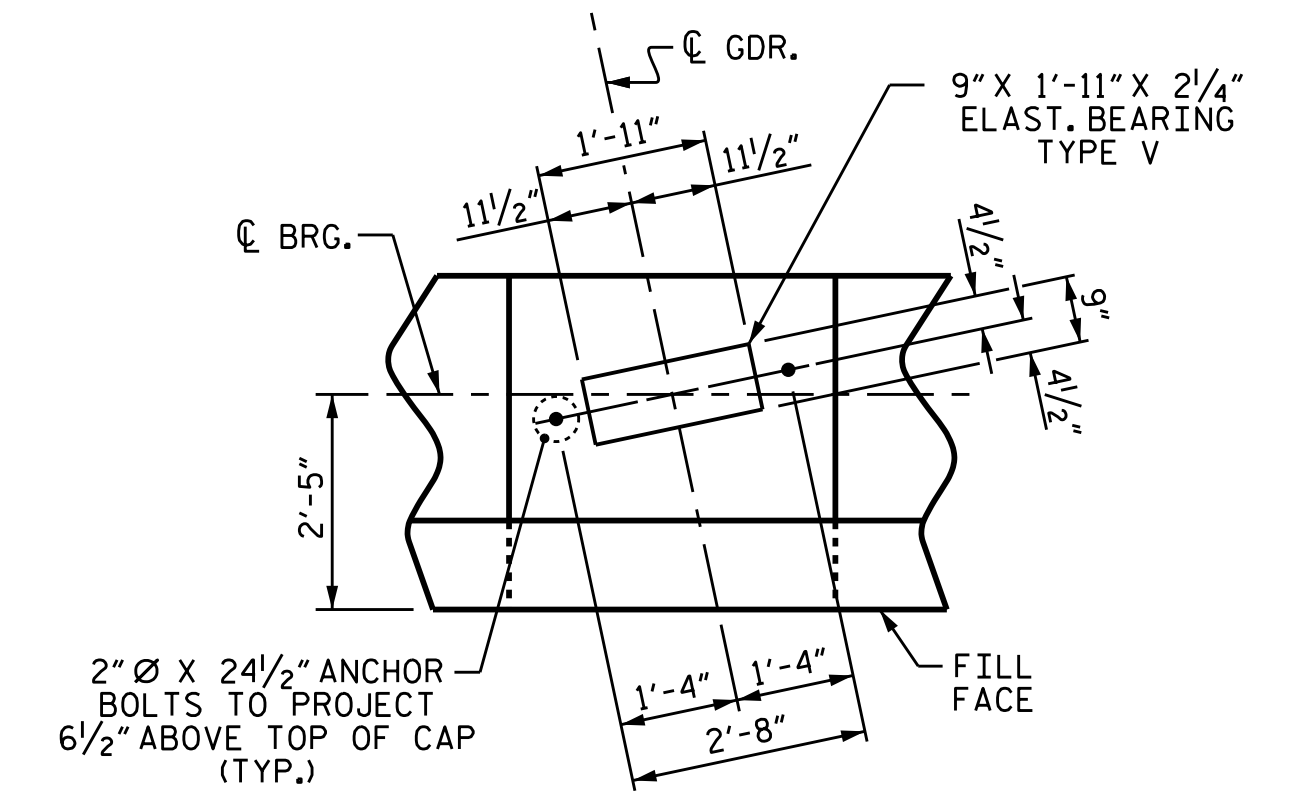
PLAN



ELEVATION

* FOR LOCATION OF ELEVATION BETWEEN BRIDGE SEAT BUILDUPS, SEE SHEET 3 OF 3.
 FOR SHEAR KEY DETAIL, SEE SHEET 3 OF 3.

①	294.62
②	294.52
③	294.41
④	294.31
⑤	294.20
⑥	294.10
⑦	293.99
⑧	293.89
⑨	293.78
⑩	293.68
⑪	293.57
⑫	293.47
⑬	293.36
⑭	293.26
⑮	293.15
⑯	293.05
⑰	292.94
⑱	292.84
⑲	292.73
⑳	292.63
㉑	292.52
㉒	292.42
㉓	292.31
㉔	292.21
㉕	292.10



DETAIL "A"

(TYP. EA. GDR.)

PROJECT NO. B-5121/B-5317
 WAKE COUNTY
 STATION: 22+06.91 -L-

SHEET 2 OF 3



DocuSigned by:
 F245839306FA6E
 4/13/2016

STATE OF NORTH CAROLINA					
DEPARTMENT OF TRANSPORTATION					
RALEIGH					
SUBSTRUCTURE					
END BENT 1					
STAGE II					
REVISIONS					
NO.	BY:	DATE:	NO.	BY:	DATE:
1			3		
2			4		
SHEET NO.					S-28
TOTAL SHEETS					110

DOCUMENT NOT CONSIDERED FINAL UNLESS ALL SIGNATURES COMPLETED

DRAWN BY: I.L. AVERETTE DATE: 2-16
 CHECKED BY: J.P. ADAMS DATE: 2-16
 DESIGN ENGINEER OF RECORD: F. LEA DATE: 2-16