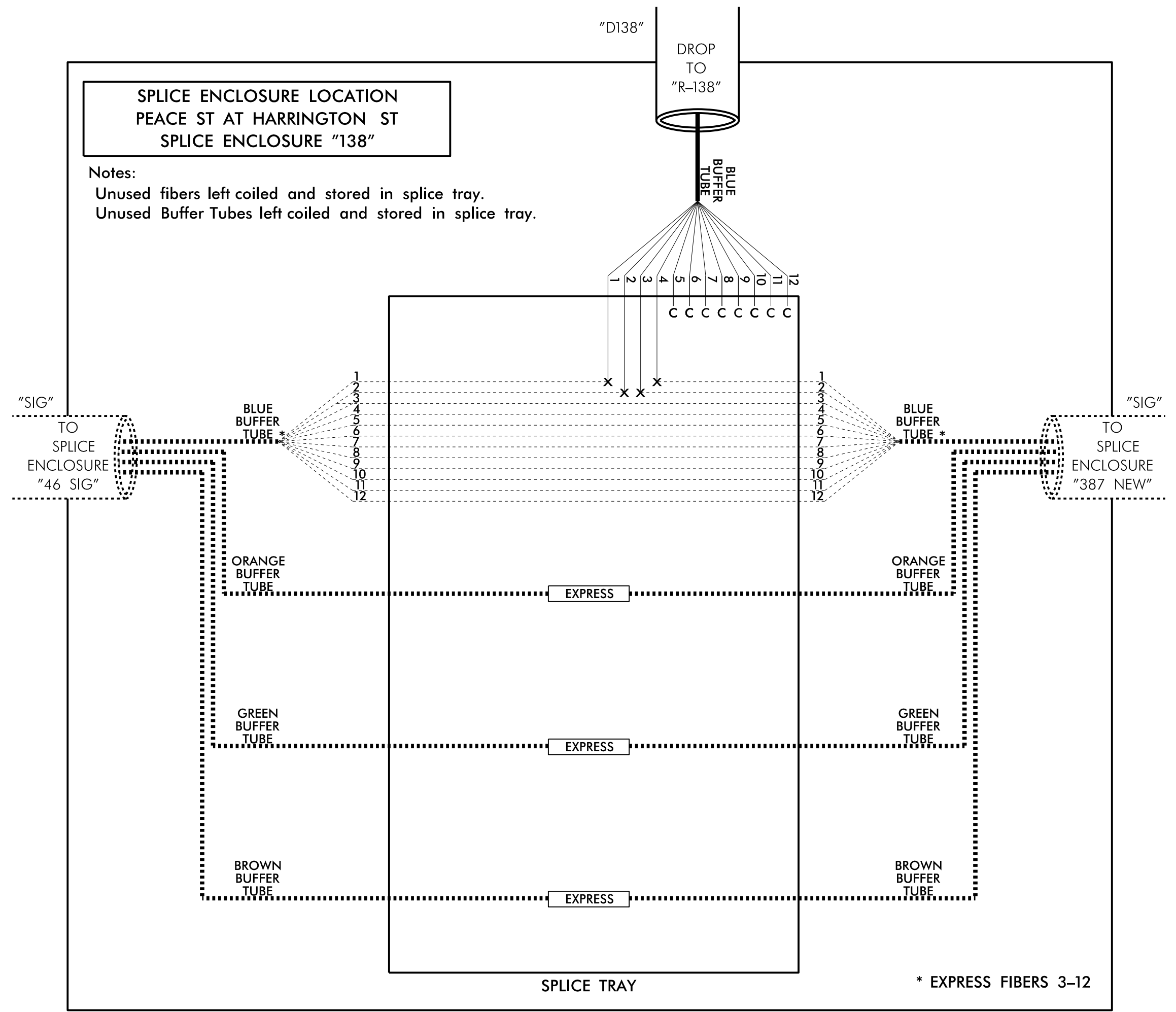
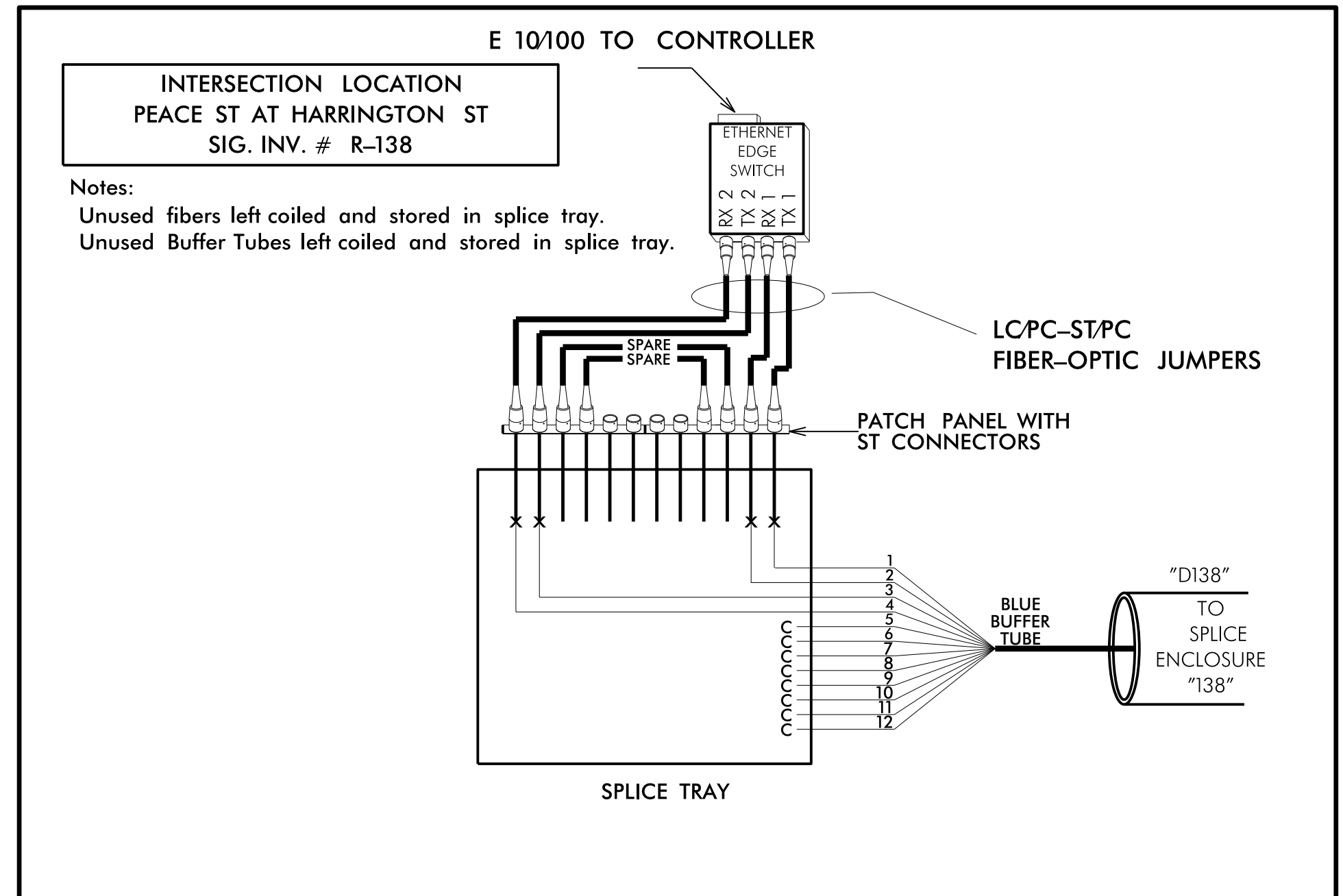


LEGEND
 X = FUSION SPLICE
 C = CAP IN TRAY

COLOR CODE TIA/EIA 598-A	
(1) BLUE	(7) RED
(2) ORANGE	(8) BLACK
(3) GREEN	(9) YELLOW
(4) BROWN	(10) VIOLET
(5) SLATE	(11) ROSE
(6) WHITE	(12) AQUA



NOTES:

- 1) ETHERNET EDGE SWITCH TO BE PROVIDED BY THE CITY OF RALEIGH. CONTACT JED NIFFENEGGER, SENIOR TRANSPORTATION ENGINEER, AT 919-996-4039 TO OBTAIN EDGE SWITCH. PROVIDE 5 WORKING DAYS NOTICE.
- 2) THE CITY WILL PROVIDE THE ETHERNET EDGE SWITCH PRE-PROGRAMMED WITH REQUIRED NETWORK CONFIGURATION DATA (INCLUDING BUT NOT LIMITED TO PROJECT IP ADDRESS, DEFAULT GATEWAY, SUBNET MASK, AND VLAN ID INFORMATION).

CONTRACTOR TO RECORD EXISTING SPLICE ARRANGEMENT FOR COMPARISON TO THE SUPPLIED SPLICE PLANS. IF DISCREPANCIES EXIST, CONTACT THE ENGINEER TO DETERMINE HOW TO PROCEED WITH RESPLICING.

ALL WORK IS NOT COMPLETE UNTIL THE SIGNAL SYSTEM IS BACK UP AND OPERATIONAL.

PHASE II / FINAL		DOCUMENT NOT CONSIDERED FINAL UNLESS ALL SIGNATURES COMPLETED
<p>750 N. Greenfield Pkwy., Garner, NC 27529</p>	<p>SPLICE DETAIL</p> <p>DIVISION 05 WAKE CO.</p> <p>PLAN DATE: FEBRUARY 2016</p> <p>PREPARED BY: B.A. STOUCHKO</p>	
	<p>DocuSigned by: RALEIGH</p> <p>REVIEWED BY: [Signature]</p> <p>DocuSigned by: G. H. Fuller</p> <p>DATE: 2/9/2016</p>	
<p>REVISIONS</p> <p>INIT. DATE</p>		<p>SEAL</p> <p>PROFESSIONAL ENGINEER</p> <p>SEAL 023919</p> <p>GREGORY A. FULLER</p>
<p>CADD Filename:</p>		<p>DATE</p>