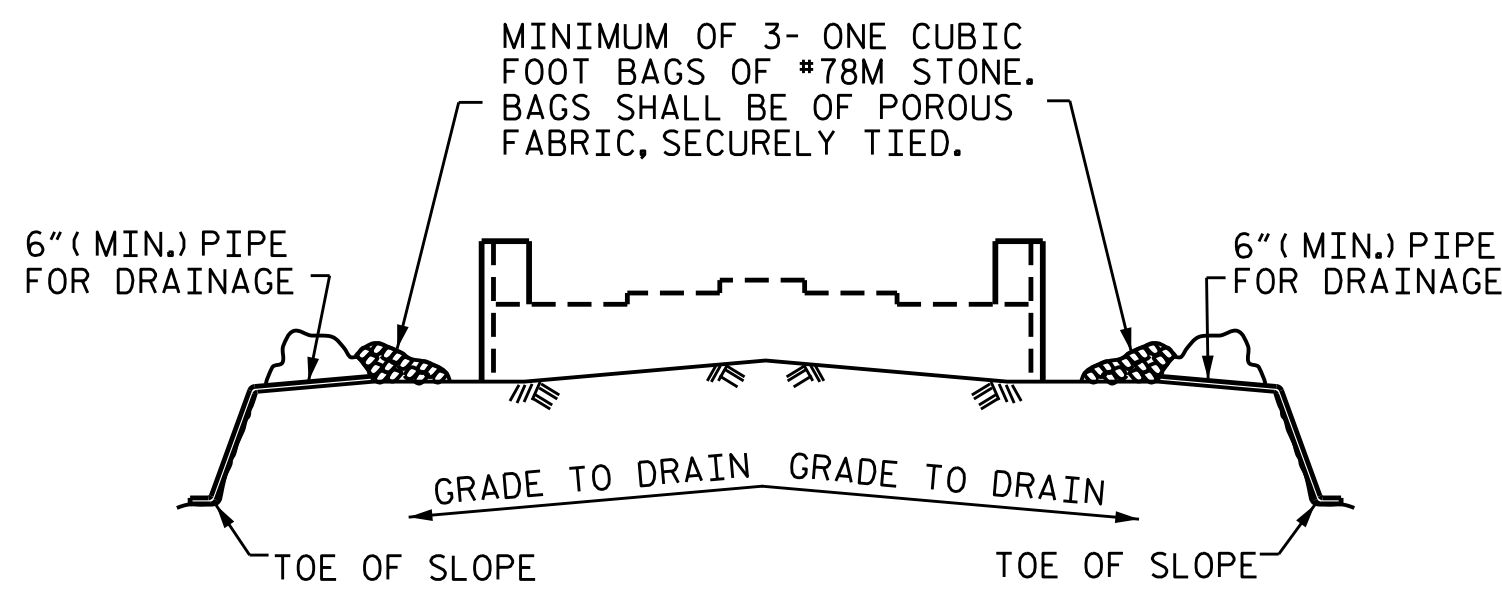


POSITION OF PILE DURING WELDING.
PILE SPlice DETAILS



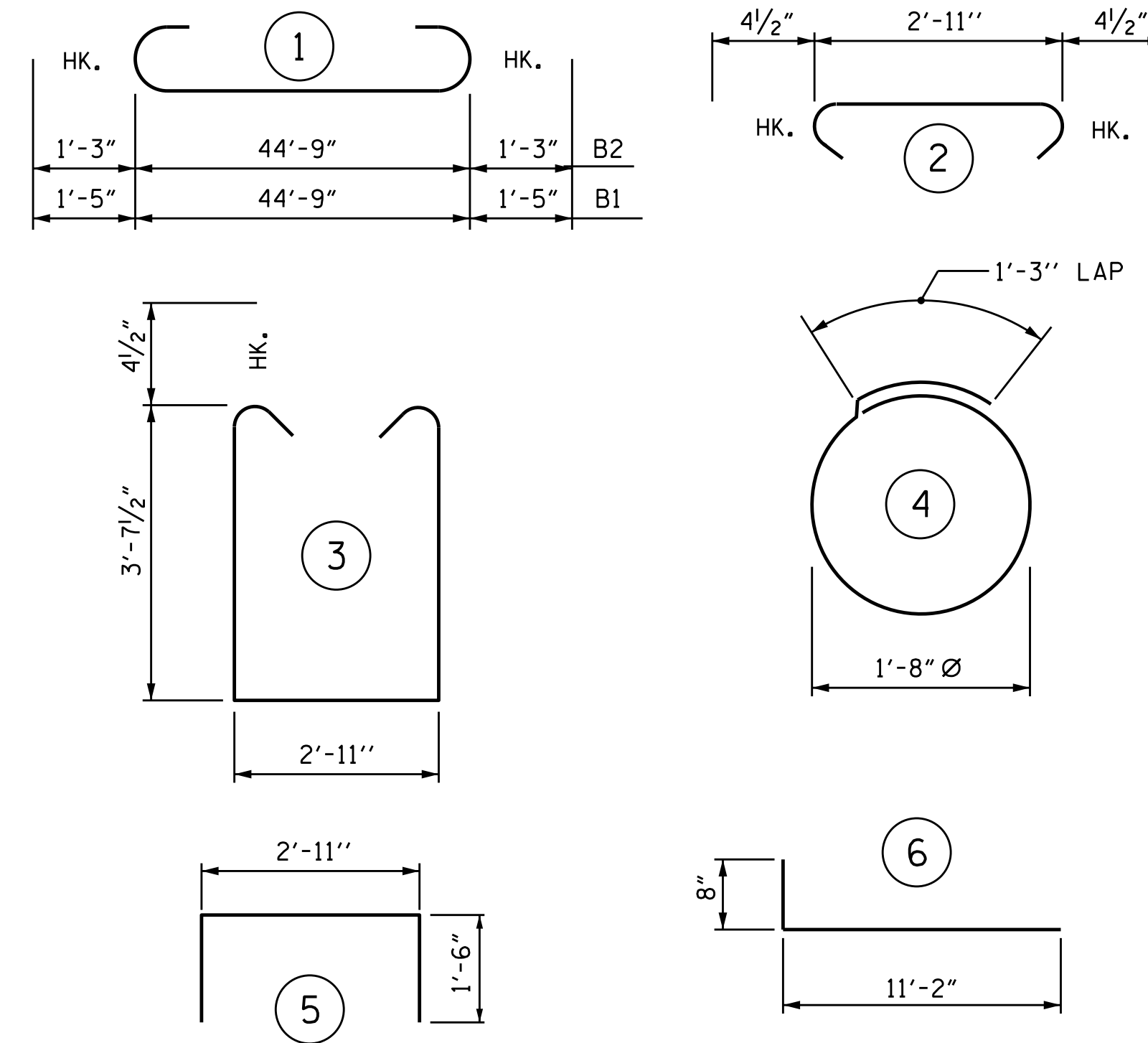
BAGGED STONE AND PIPE SHALL BE PLACED IMMEDIATELY AFTER COMPLETION OF END BENT EXCAVATION. PIPE MAY BE EITHER CONCRETE, CORRUGATED STEEL, CORRUGATED ALUMINUM ALLOY, OR CORRUGATED PLASTIC. PERFORATED PIPE WILL NOT BE ALLOWED.

BAGGED STONE SHALL REMAIN IN PLACE UNTIL THE ENGINEER DIRECTS THAT IT BE REMOVED. THE CONTRACTOR SHALL REMOVE AND DISPOSE OF SILT ACCUMULATIONS AT BAGGED STONE WHEN SO DIRECTED BY THE ENGINEER. BAGS SHALL BE REMOVED AND REPLACED WHENEVER THE ENGINEER DETERMINES THAT THEY HAVE DETERIORATED AND LOST THEIR EFFECTIVENESS.

NO SEPARATE PAYMENT WILL BE MADE FOR THIS WORK AND THE ENTIRE COST OF THIS WORK SHALL BE INCLUDED IN THE UNIT CONTRACT PRICE BID FOR THE SEVERAL PAY ITEMS.

TEMPORARY DRAINAGE AT END BENT

BAR TYPES



ALL BAR DIMENSIONS ARE OUT TO OUT

BILL OF MATERIAL

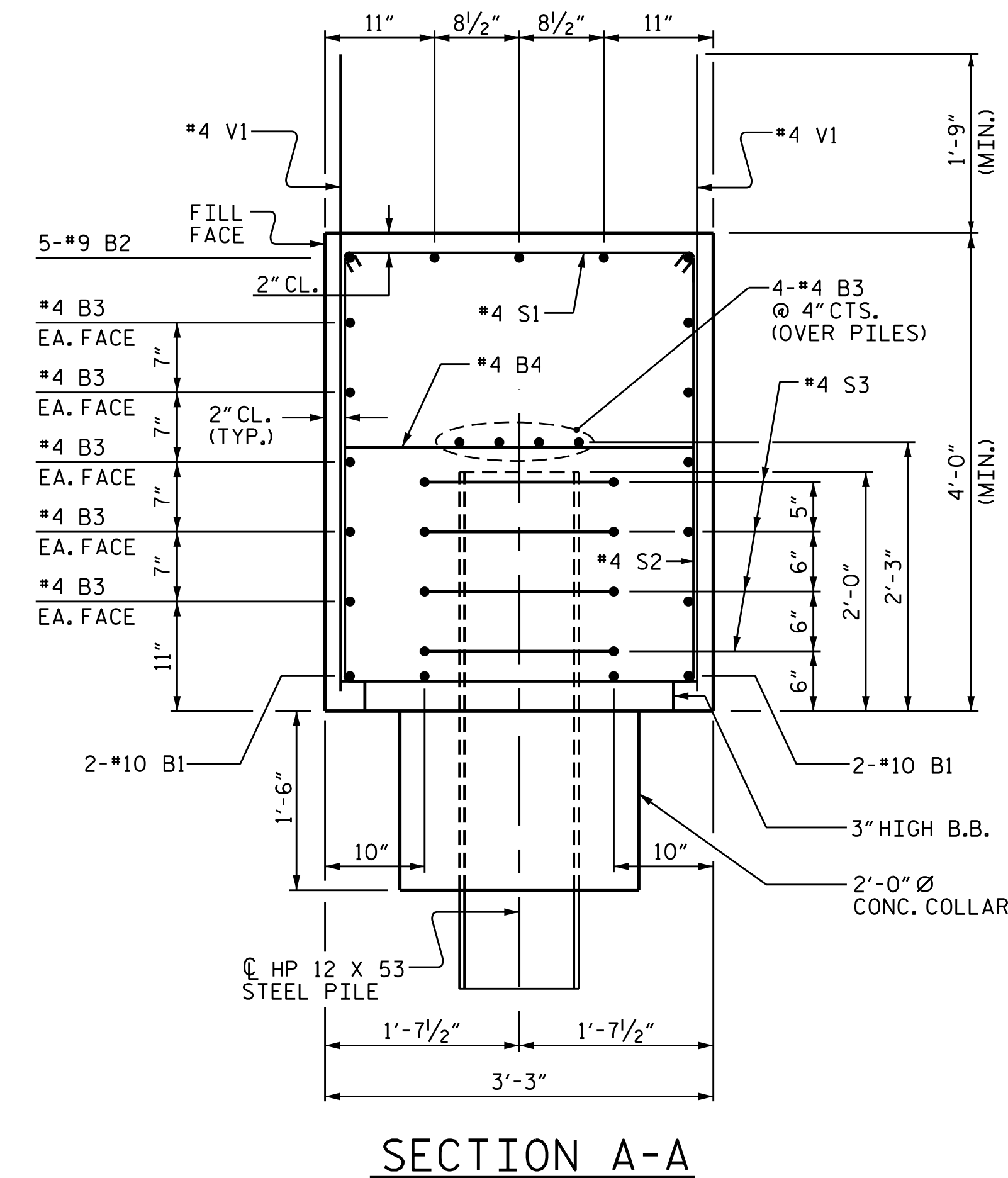
INTEGRAL END BENT 2

BAR	NO.	SIZE	TYPE	LENGTH	WEIGHT
B1	4	#10	1	47'-7"	819
B2	5	#9	1	47'-3"	803
B3	28	#4	STR.	23'-8"	443
B4	12	#4	STR.	2'-11"	23
B5	5	#4	STR.	2'-8"	9
H1	52	#5	6	11'-10"	642
K1	28	#4	STR.	2'-7"	48
S1	45	#4	2	3'-8"	110
S2	45	#4	3	10'-11"	328
S3	24	#4	4	6'-6"	104
U1	3	#4	5	5'-11"	12
V1	73	#4	STR.	5'-7"	272
V2	60	#4	STR.	8'-4"	334

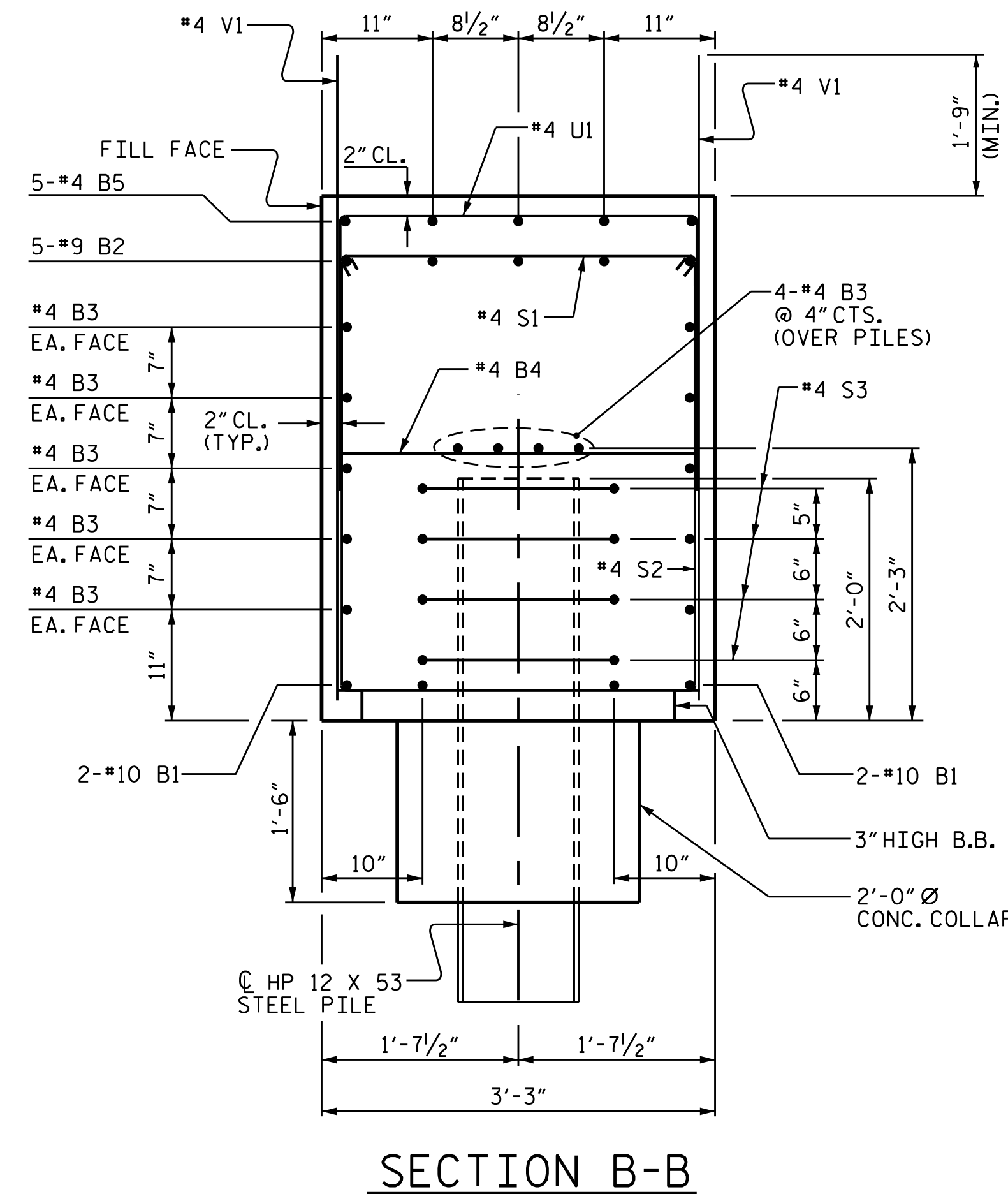
REINFORCING STEEL 3,947 LBS.

CLASS A CONCRETE	POUR #1-CAP, LOWER WINGS & CONCRETE COLLARS	26.4 CU.YDS.
	POUR #2-UPPER PART OF WINGS	4.4 CU.YDS.
TOTAL		30.8 CU.YDS.

HP 12 X 53 STEEL PILES	NO.	LINEAR FEET
	6	120 LIN.FT.



SECTION A-A



SECTION B-B

PROJECT NO. B-4761
HALIFAX COUNTY
 STATION: 20+11.00 -L-
 SHEET 3 OF 3



DocuSigned by:
 Emily E. Murray
 C:\ES\16038688

4/27/2016

STATE OF NORTH CAROLINA
 DEPARTMENT OF TRANSPORTATION
 RALEIGH
 SUBSTRUCTURE
 INTEGRAL END BENT 2

DRAWN BY : M.D.PISO DATE : 8-05-2015
 CHECKED BY : D.G.ELY DATE : 8-25-2015
 DESIGN ENGINEER OF RECORD : G. KOUCHEKI DATE : 3/14/16

DOCUMENT NOT CONSIDERED
 FINAL UNLESS ALL
 SIGNATURES COMPLETED

REVISIONS						SHEET NO.
NO.	BY:	DATE:	NO.	BY:	DATE:	S-29
1			3			TOTAL SHEETS
2			4			31