

SURVEY CONTROL SHEET B-4761

FINAL

BASELINE DATA

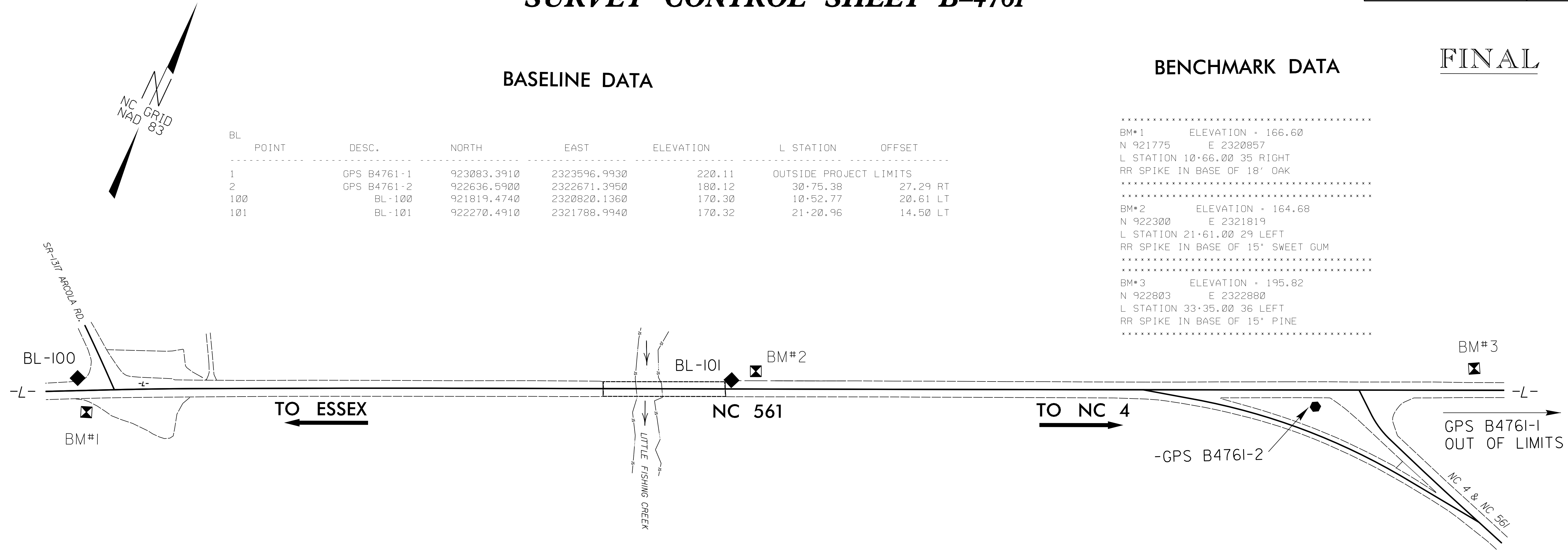
BL POINT	DESC.	NORTH	EAST	ELEVATION	L STATION	OFFSET
1	GPS B4761-1	923083.3910	2323596.9930	220.11	OUTSIDE PROJECT LIMITS	
2	GPS B4761-2	922636.5900	2322671.3950	180.12	30+75.38	27.29 RT
100	BL-100	921819.4740	2320820.1360	170.30	10+52.77	20.61 LT
101	BL-101	922270.4910	2321788.9940	170.32	21+20.96	14.50 LT

BENCHMARK DATA

```

*****
BM#1      ELEVATION = 166.60
N 921775  E 2320857
L STATION 10+66.00 35 RIGHT
RR SPIKE IN BASE OF 18' OAK
*****
BM#2      ELEVATION = 164.68
N 922300  E 2321819
L STATION 21+61.00 29 LEFT
RR SPIKE IN BASE OF 15" SWEET GUM
*****
BM#3      ELEVATION = 195.82
N 922803  E 2322880
L STATION 33+35.00 36 LEFT
RR SPIKE IN BASE OF 15" PINE
*****

```



DATUM DESCRIPTION

THE LOCALIZED COORDINATE SYSTEM DEVELOPED FOR THIS PROJECT IS BASED ON THE STATE PLANE COORDINATES ESTABLISHED BY NCDOT FOR MONUMENT "GPS B4761-2" WITH NAD 83 STATE PLANE GRID COORDINATES OF
 NORTHING: 922636.590(ft) EASTING: 2322671.395(ft)
 ELEVATION: 180.12(ft)
 THE AVERAGE COMBINED GRID FACTOR USED ON THIS PROJECT (GROUND TO GRID) IS: 1.00002981
 THE N.C. LAMBERT GRID BEARING AND LOCALIZED HORIZONTAL GROUND DISTANCE FROM "GPS B4761-2" TO -L- STATION 10+00.00 IS
 S65°32'49.5W 2075.44
 ALL LINEAR DIMENSIONS ARE LOCALIZED HORIZONTAL DISTANCES
 VERTICAL DATUM USED IS NAVD 88

NOTES:

- THE CONTROL DATA FOR THIS PROJECT CAN BE FOUND ELECTRONICALLY BY SELECTING PROJECT CONTROL DATA AT:
[HTTPS://CONNECT.NCDOT.GOV/RESOURCES/LOCATION/](https://connect.ncdot.gov/resources/location/)
 THE FILES TO BE FOUND ARE AS FOLLOWS:
 B4761_LS_CONTROL.TXT
 SITE CALIBRATION INFORMATION HAS NOT BEEN PROVIDED FOR THIS PROJECT. IF FURTHER INFORMATION IS NEEDED, PLEASE CONTACT THE LOCATION AND SURVEYS UNIT.
- ◆ INDICATES GEODETIC CONTROL MONUMENTS USED OR SET FOR HORIZONTAL PROJECT CONTROL BY THE NCDOT LOCATION AND SURVEYS UNIT.
 PROJECT CONTROL ESTABLISHED USING GLOBAL POSITIONING SYSTEM.

NOTE: DRAWING NOT TO SCALE

6/2/99

14-JUN-2016 08:55 B4761.LLS-1c.dgn
 64380 C:\PROJECTS\B4761\B4761.LLS-1c.dgn