

**This electronic collection of documents is provided
for the convenience of the user
and is Not a Certified Document –**

**The documents contained herein were originally issued
and sealed by the individuals whose names and license
numbers appear on each page, on the dates appearing
with their signature on that page.**

**This file or an individual page
shall not be considered a certified document.**

09/08/99

TIP PROJECT: W-5510

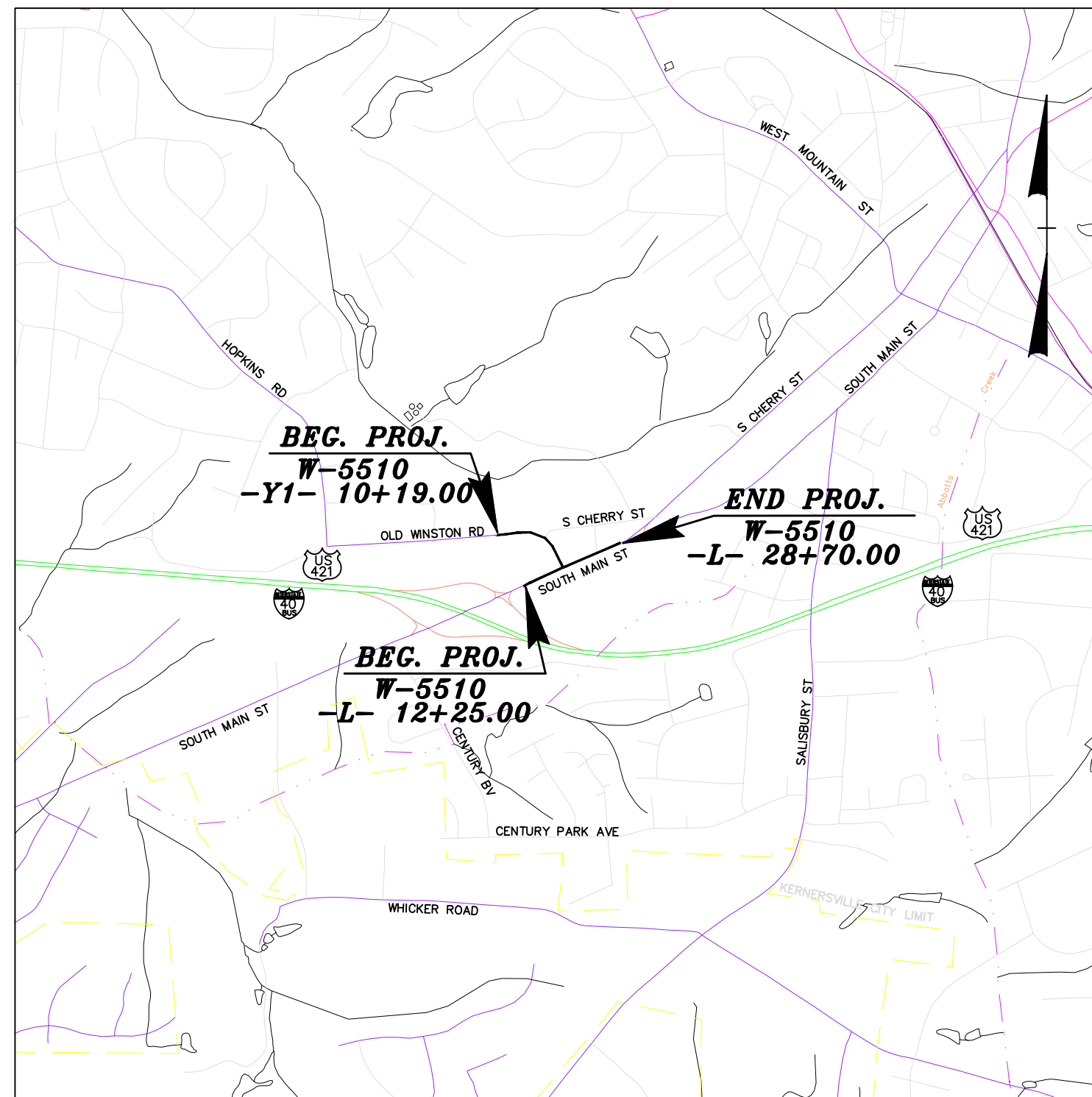
STATE OF NORTH CAROLINA DIVISION OF HIGHWAYS

T.I.P. NO.	SHEET NO.
W-5510	UC-1

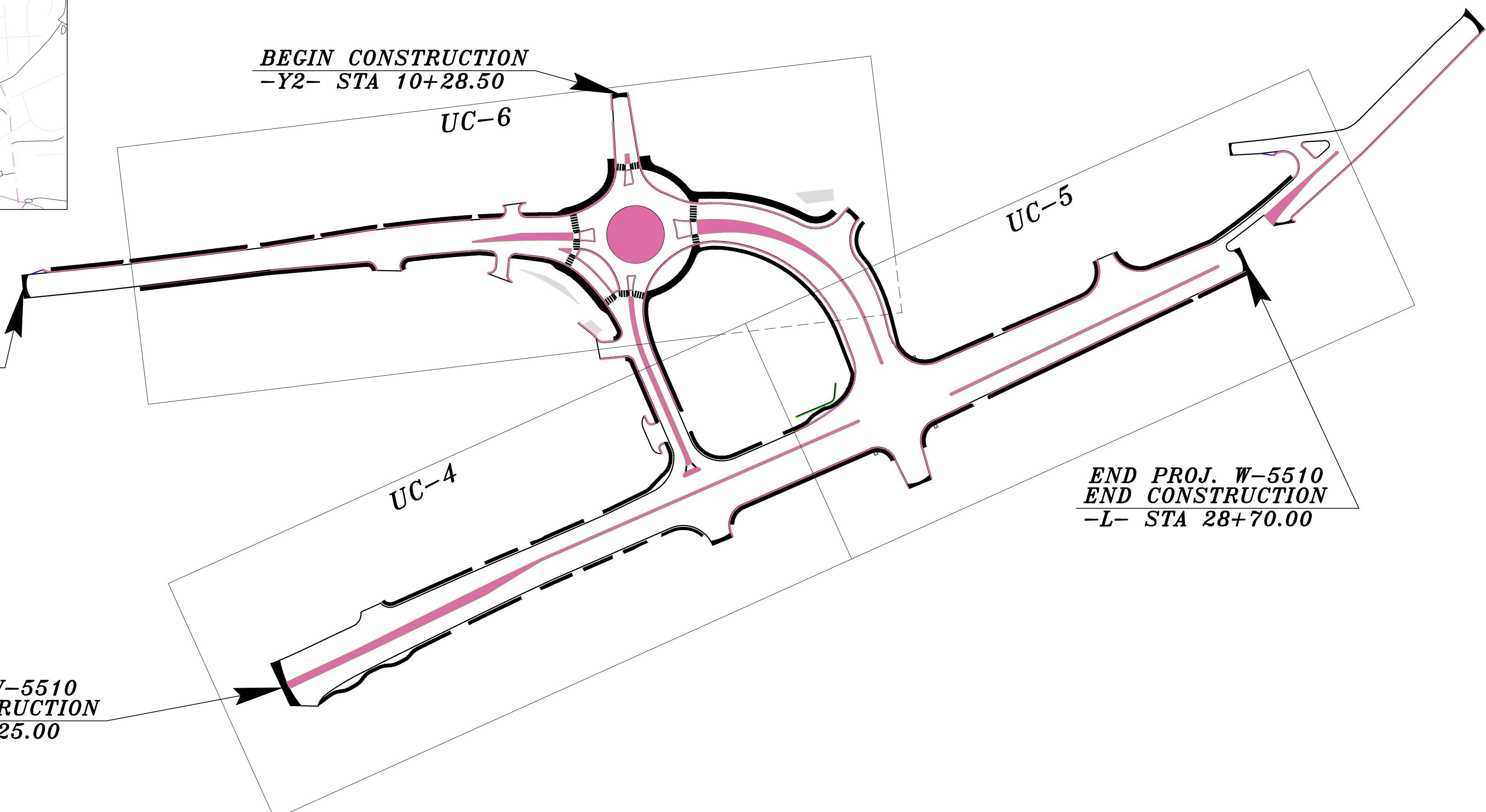
UTILITY CONSTRUCTION PLANS FORSYTH COUNTY

LOCATION: SR 4315 (S MAIN STREET)/SR 2648 (OLD WINSTON ROAD)
FROM: I-BUS-40 RAMP TO: SR 4278 (S CHERRY STREET)

TYPE OF WORK: UTILITIES

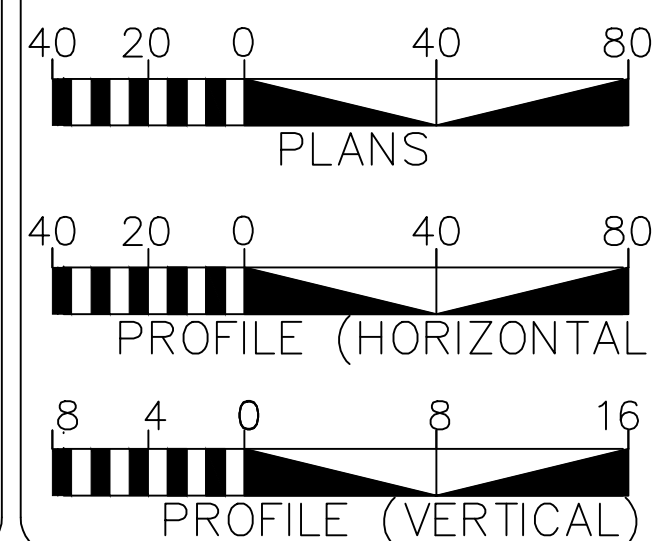


VICINITY MAP



THIS PROJECT IS WITHIN THE MUNICIPAL BOUNDARIES OF KERNERSVILLE.

GRAPHIC SCALES



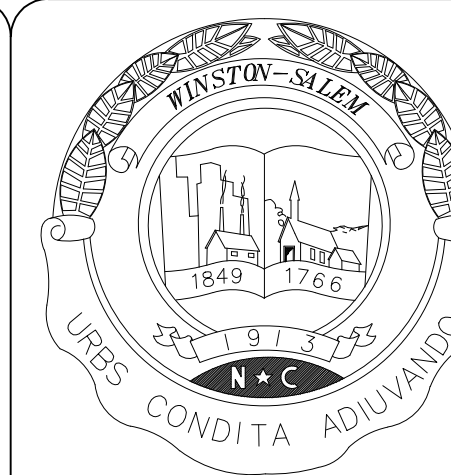
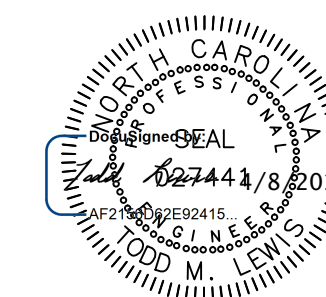
INDEX OF SHEETS

SHEET NO.	DESCRIPTION
UC-1	TITLE SHEET
UC-2	UTILITY SYMBOLOGY
UC-3	NOTES
UC-3A THRU UC-3D	DETAILS
UC-4 THRU UC-6	UTILITY CONSTRUCTION SHEETS
UC-7 THRU UC-8	PROFILE SHEETS

WATER AND SEWER OWNERS ON PROJECT

- (1) SEWER: WINSTON-SALEM/FORSYTH COUNTY UTILITIES COMMISSION
- (2) WATER: WINSTON-SALEM/FORSYTH COUNTY UTILITIES COMMISSION

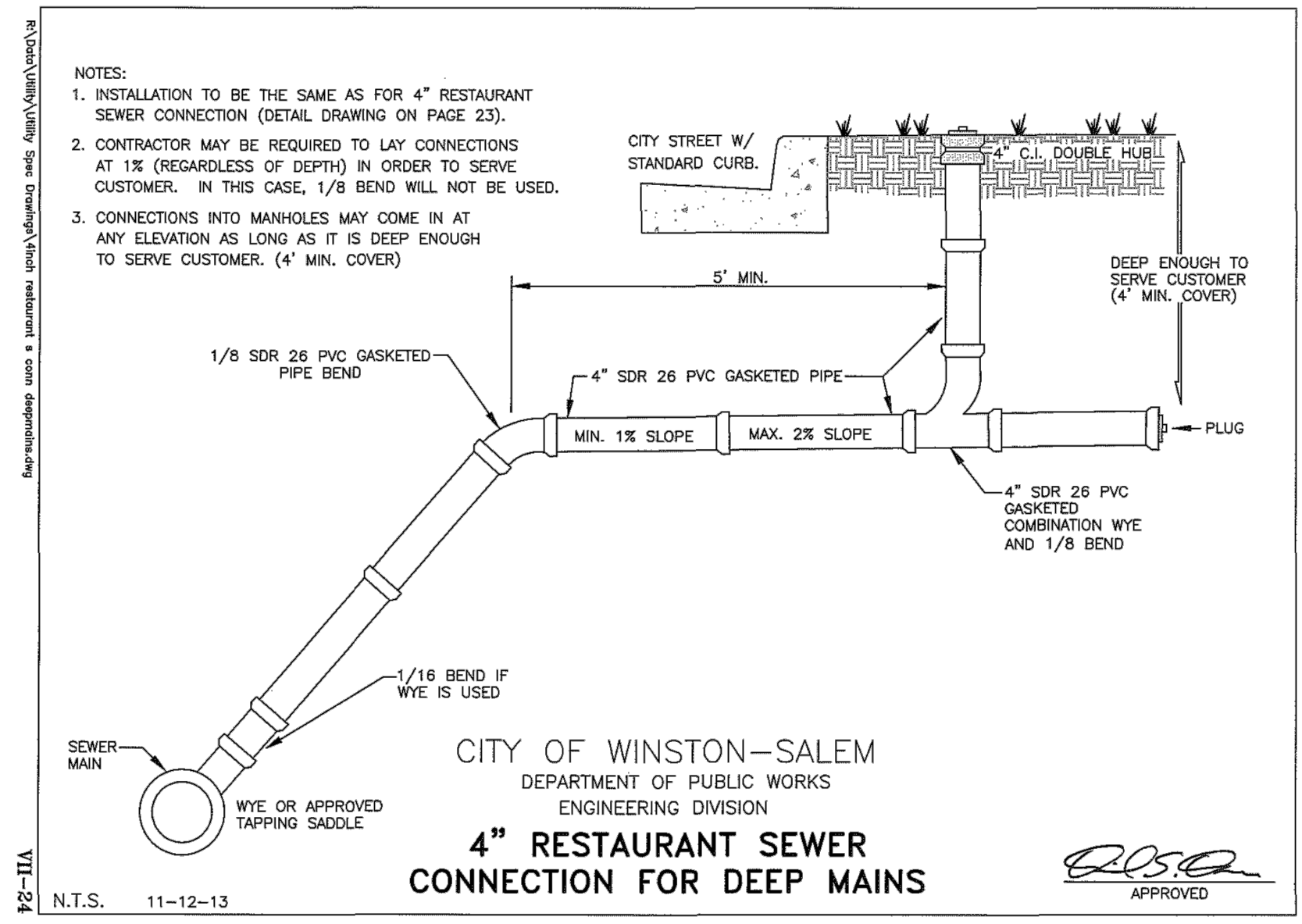
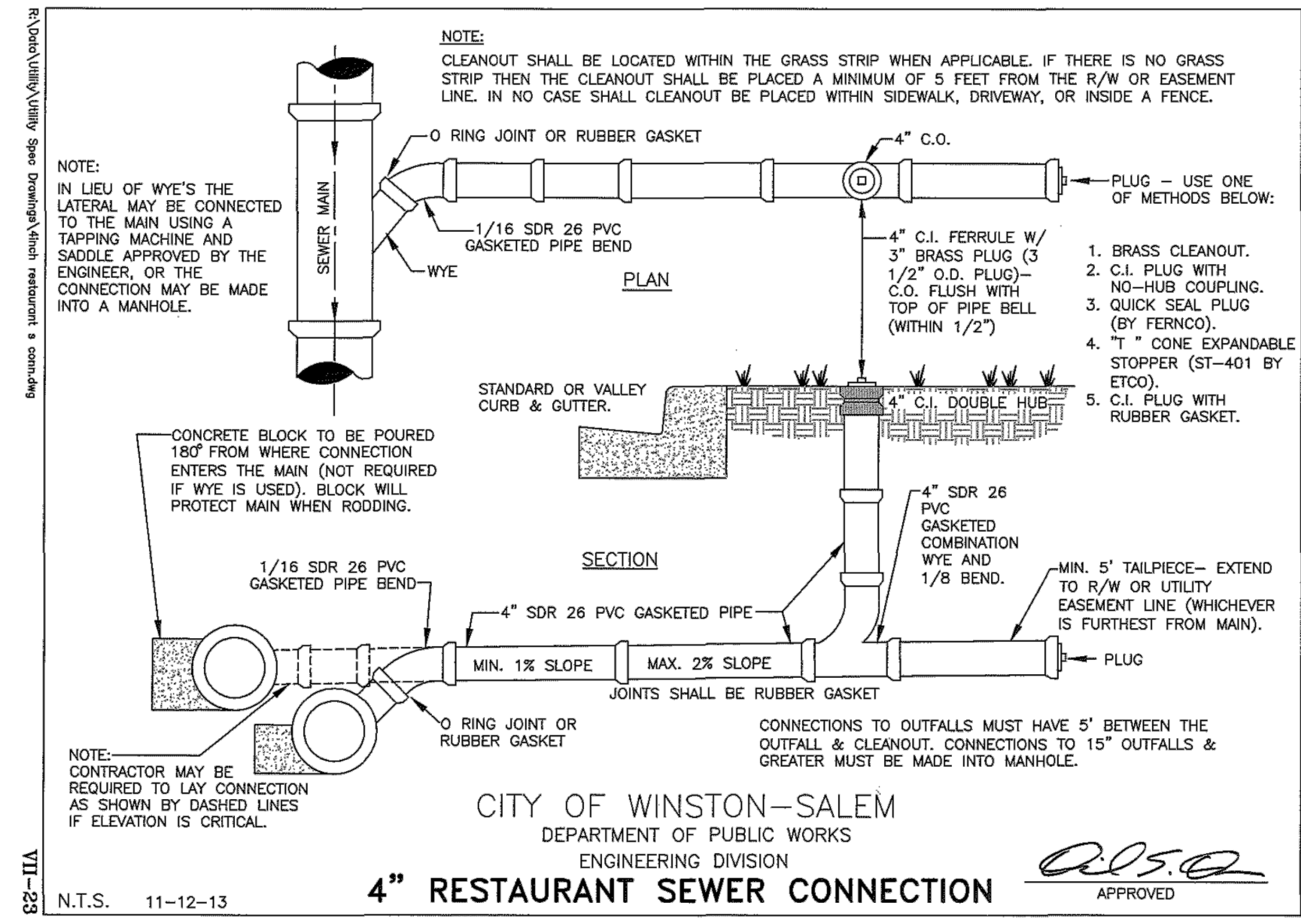
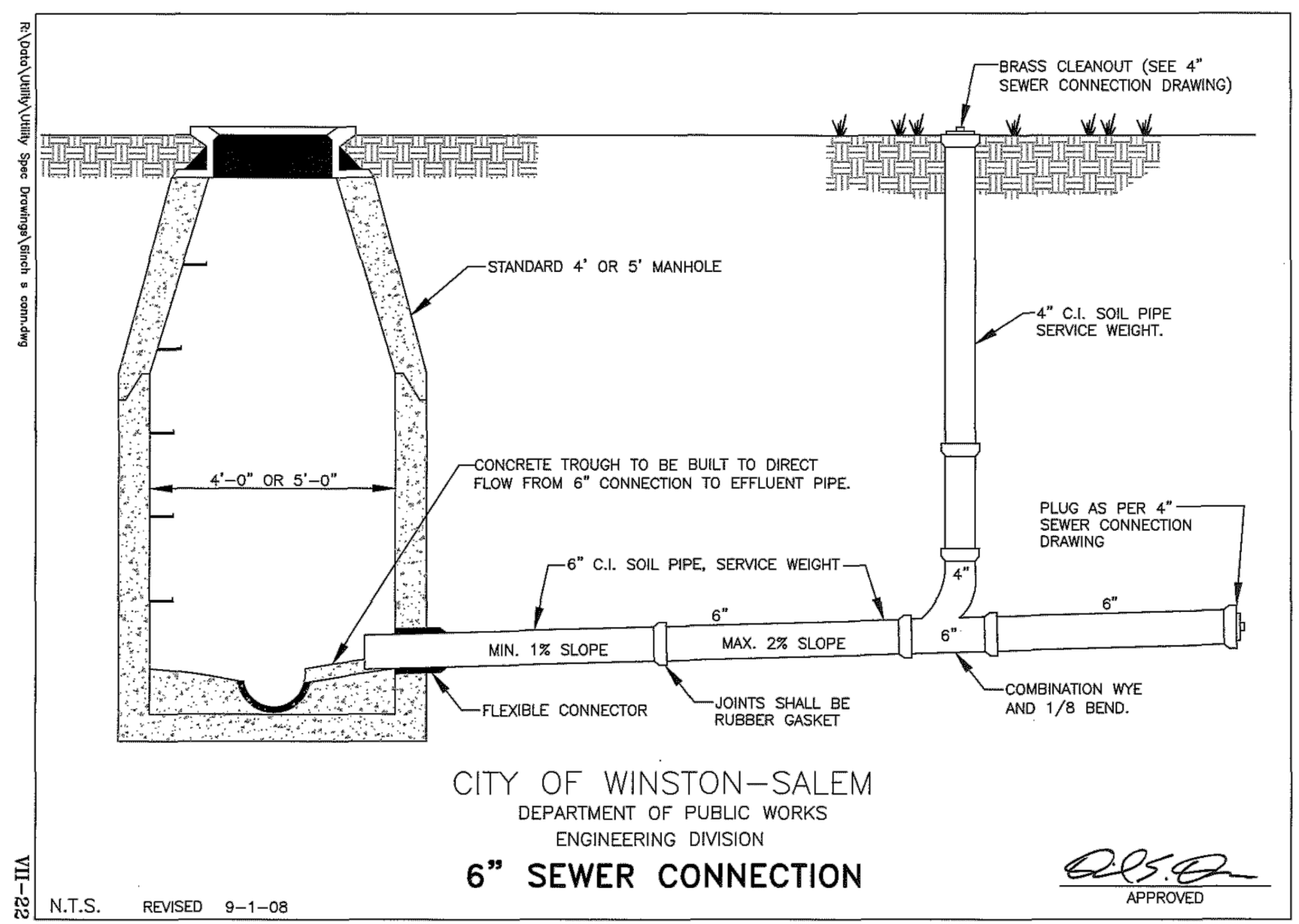
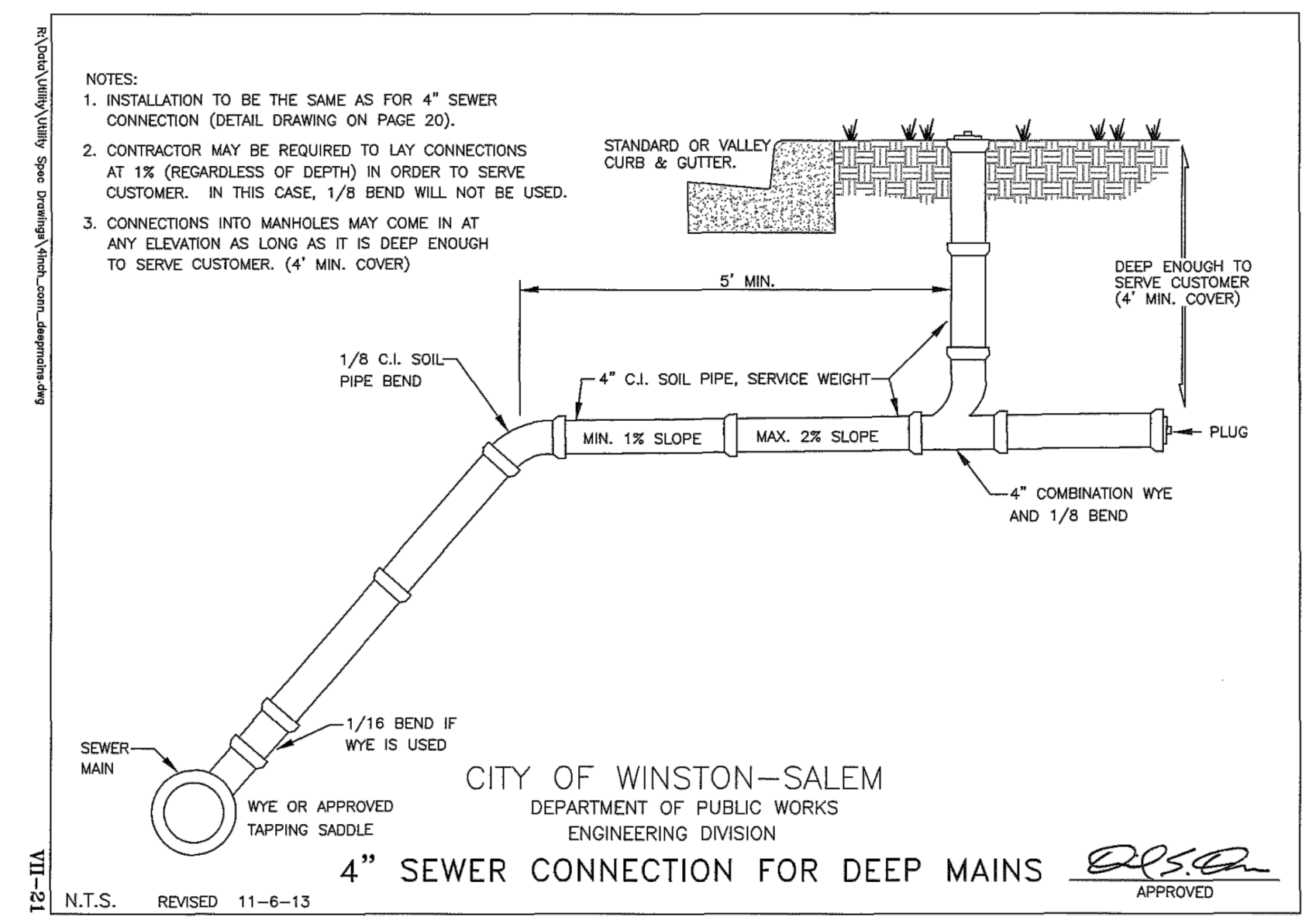
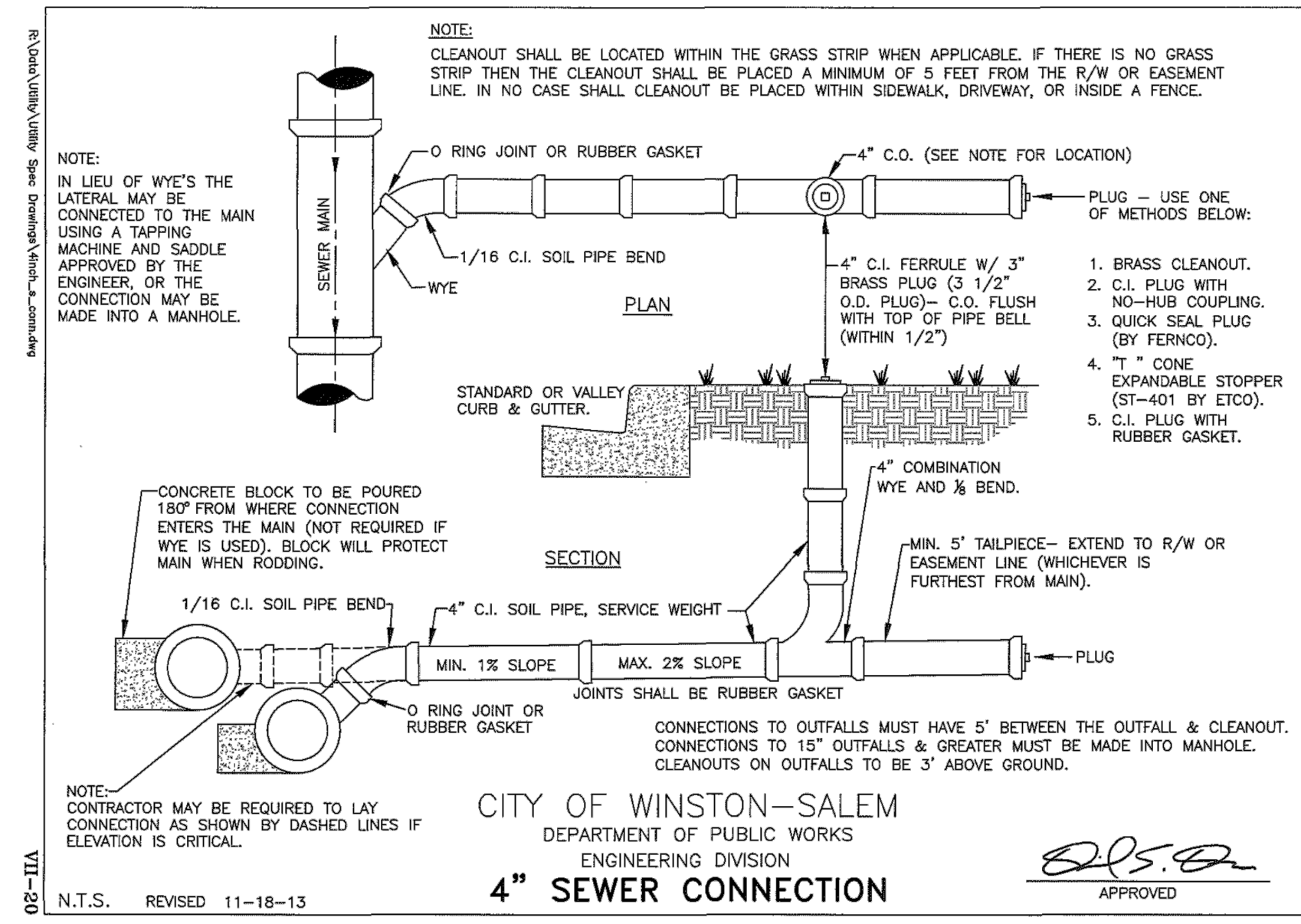
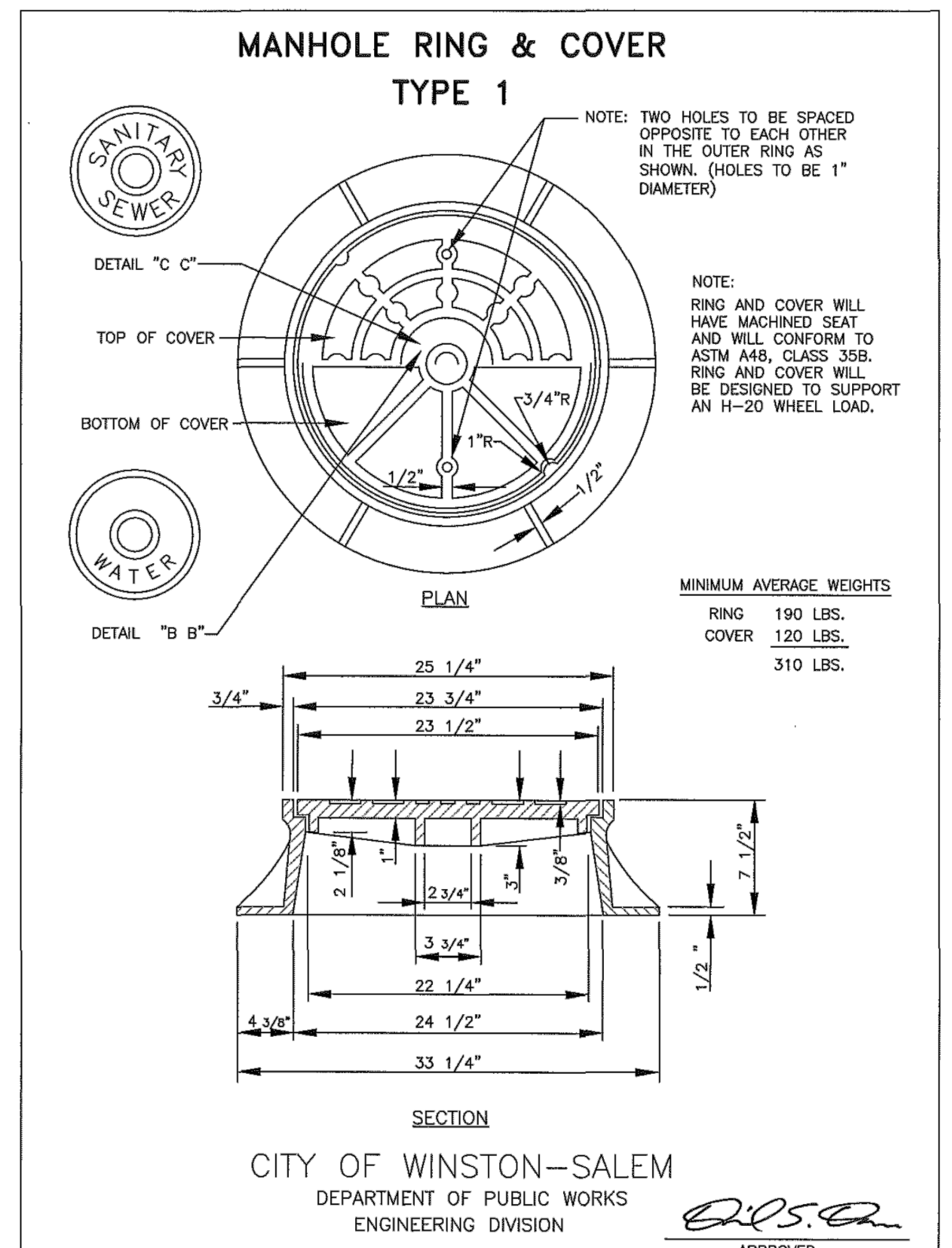
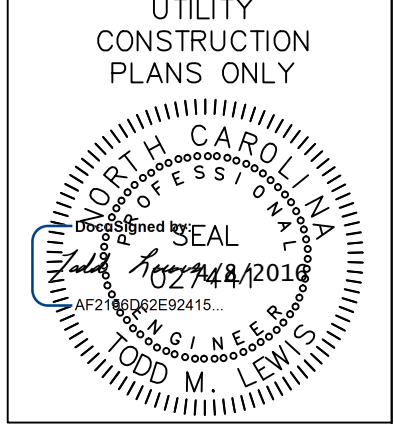
SEAL



PREPARED IN THE OFFICE OF:
**ENGINEERING DIVISION
CITY OF WINSTON-SALEM**

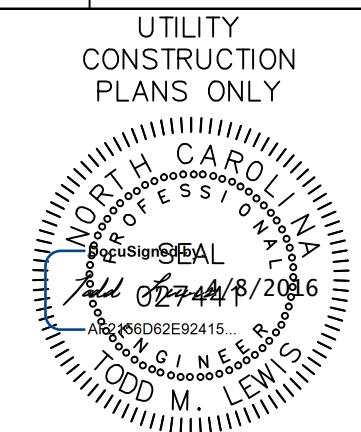
P.O. BOX 2511
WINSTON-SALEM, NC 27102
PHONE: (336) 727-8000
FAX: (336) 727-2361

TODD M. LEWIS, P.E. PROJECT ENGINEER

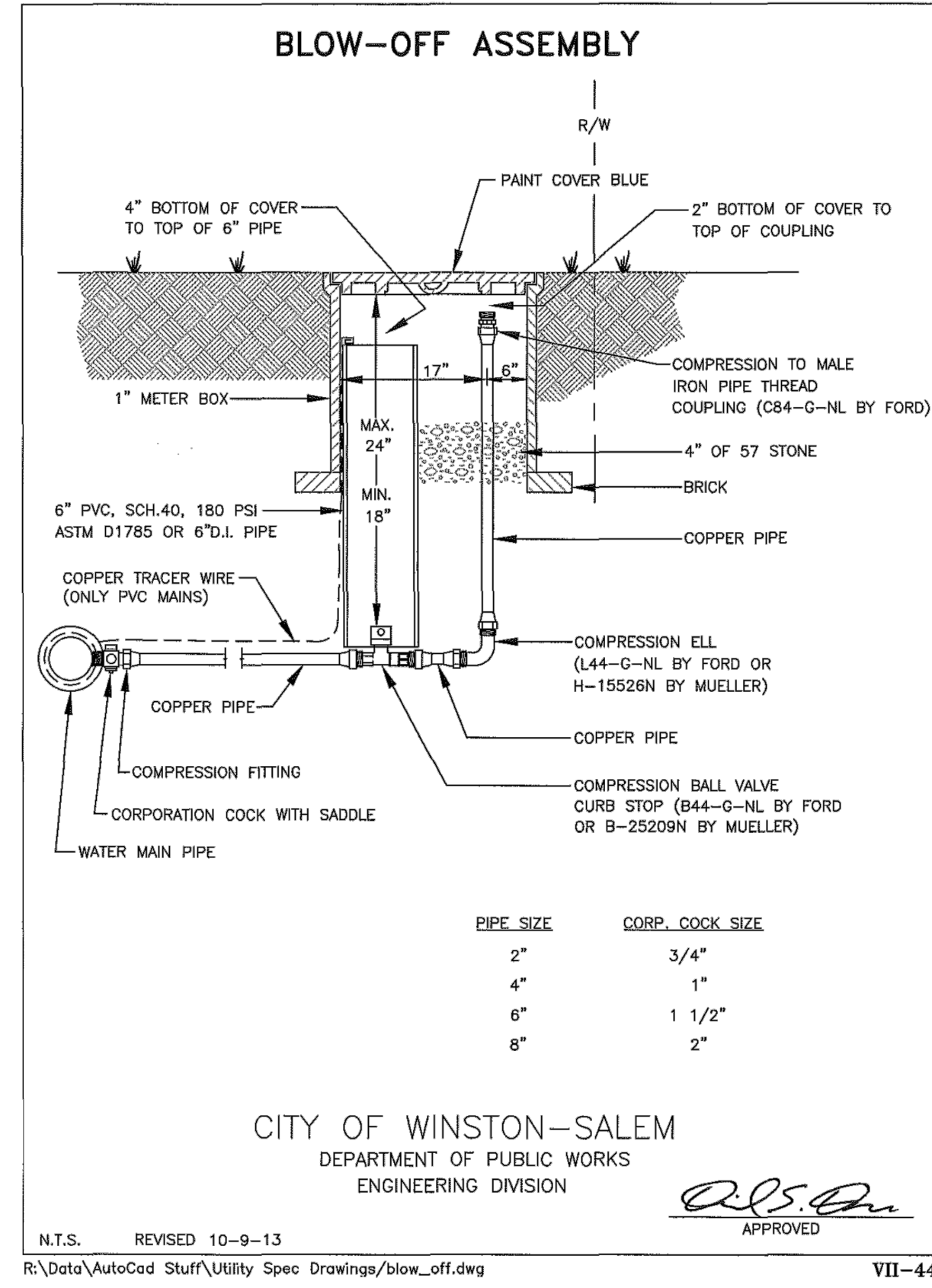


REVISIONS

UNAPPROVED FOR CONSTRUCTION

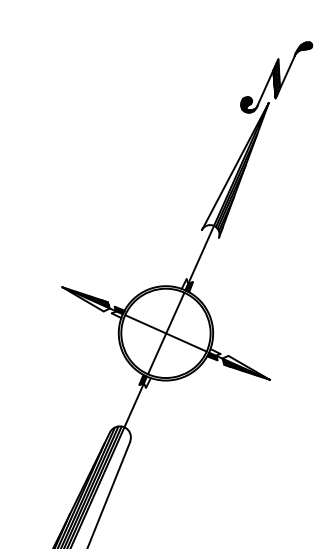
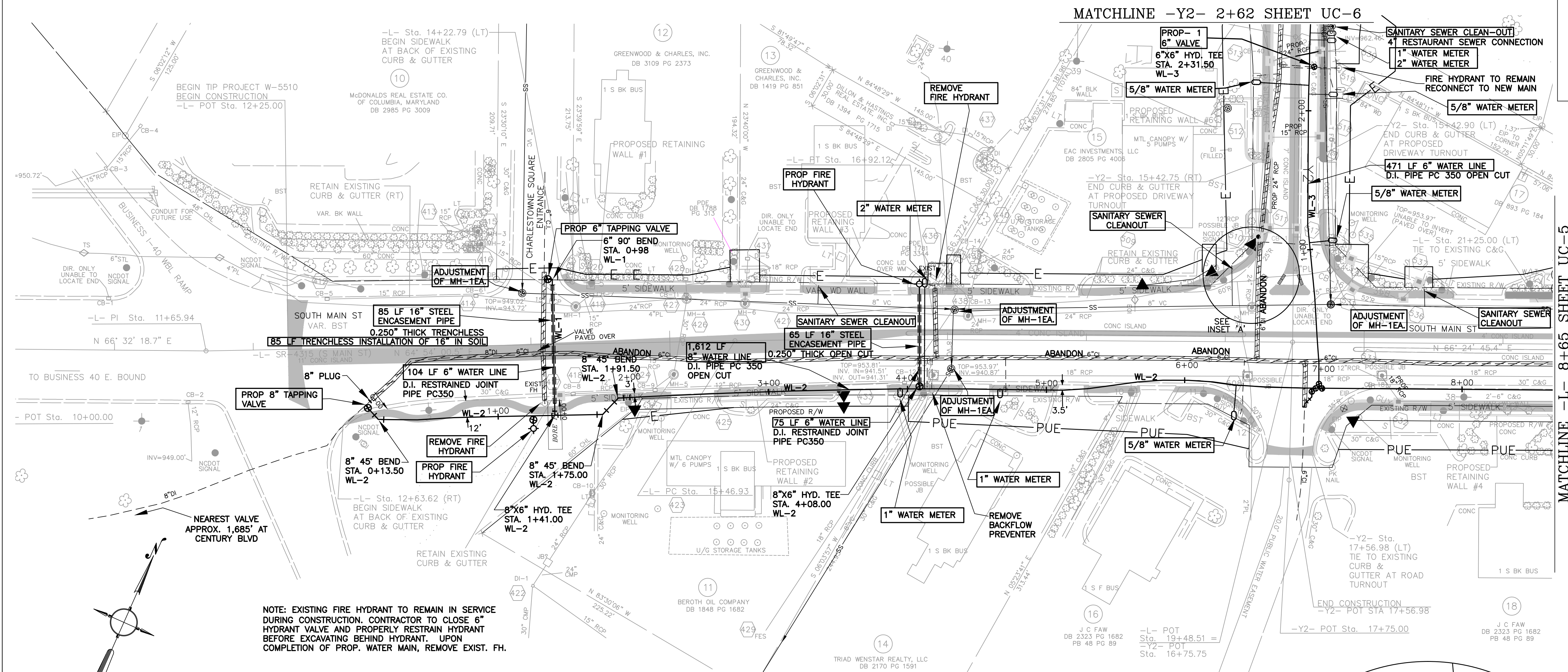


5/14/99



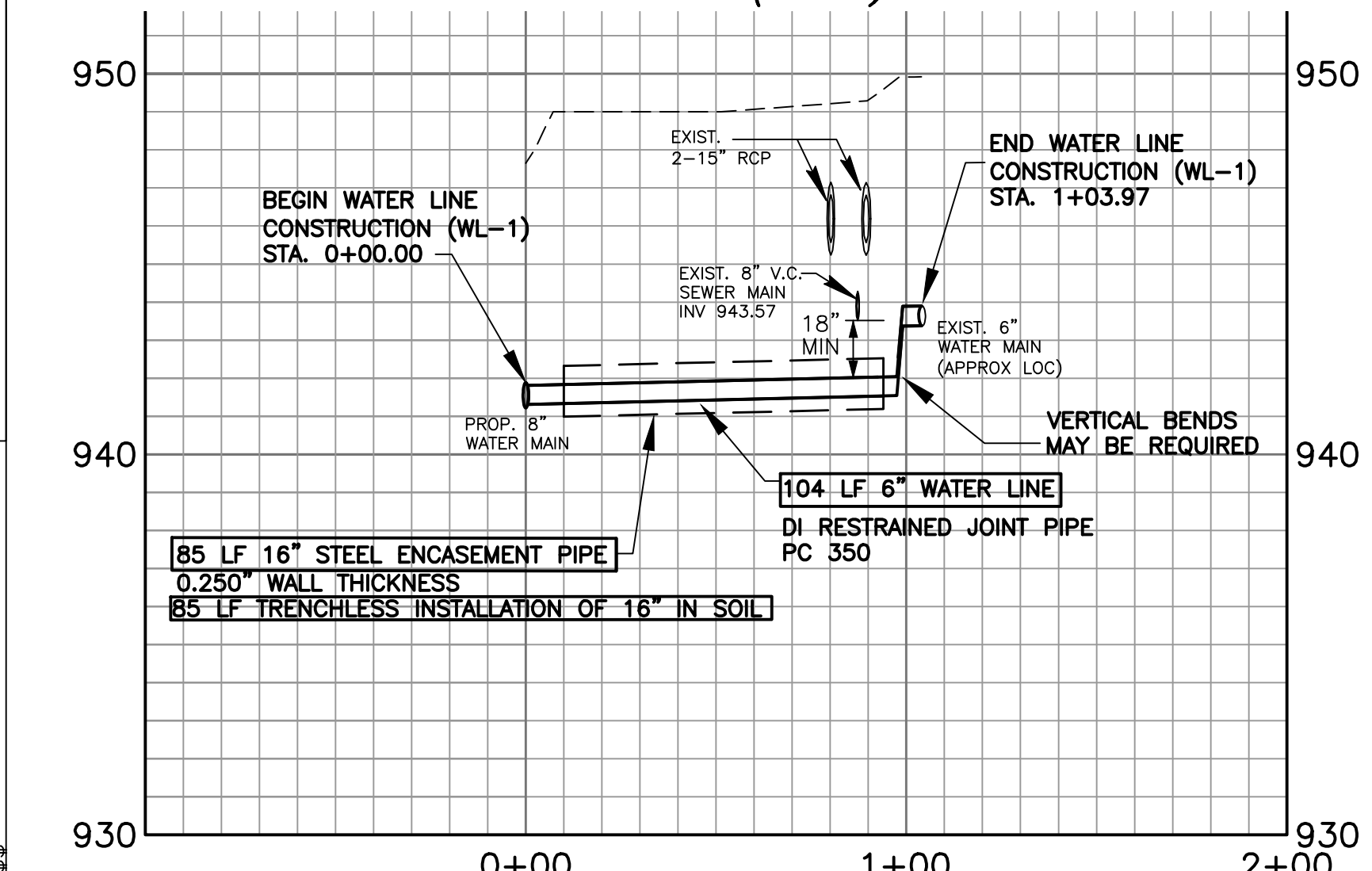
REVISIONS

\$\$\$SYTIME\$\$\$\$\$
 \$\$\$USERNAME\$\$\$\$\$
 \$\$\$CON\$\$\$\$\$

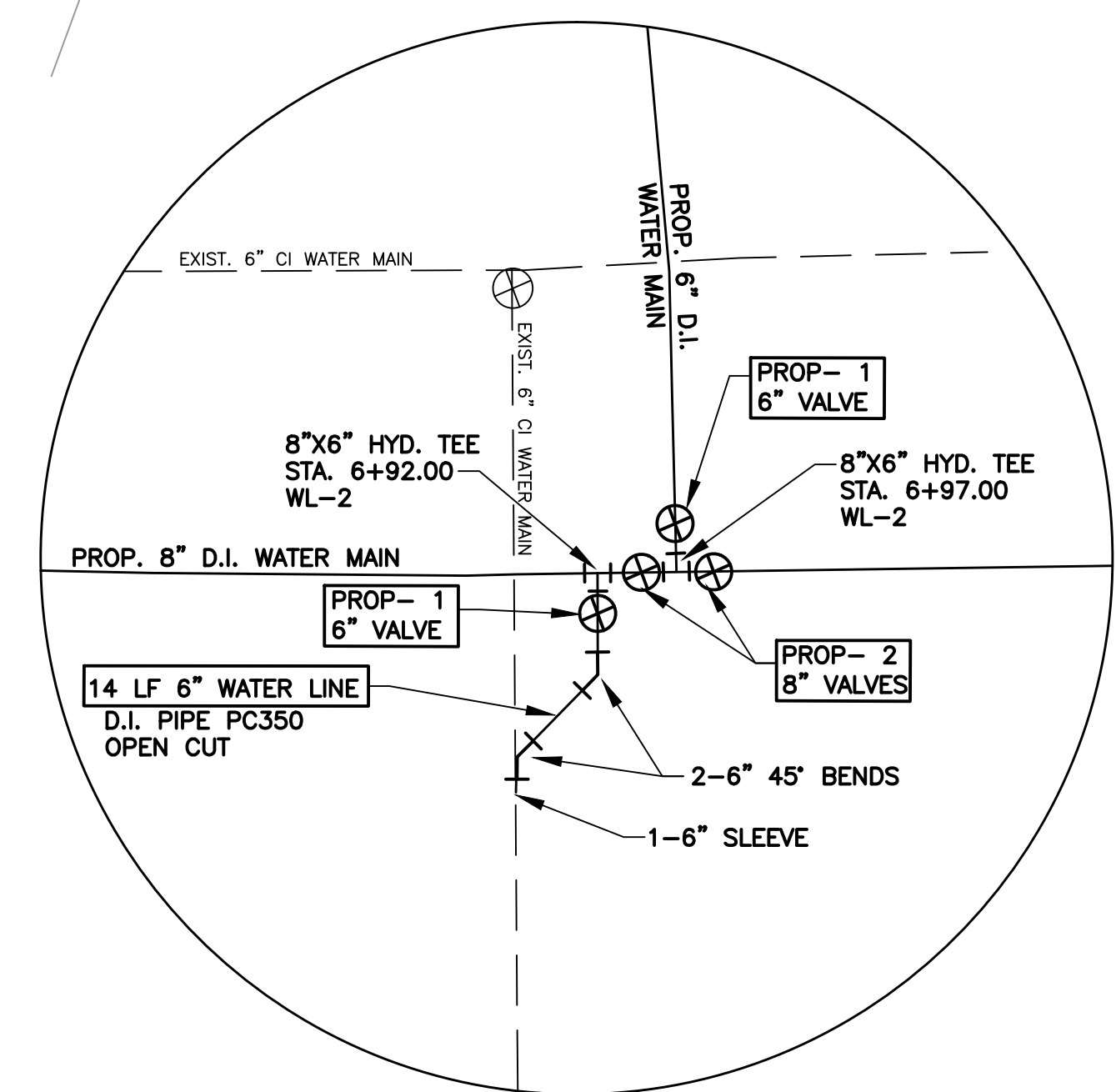
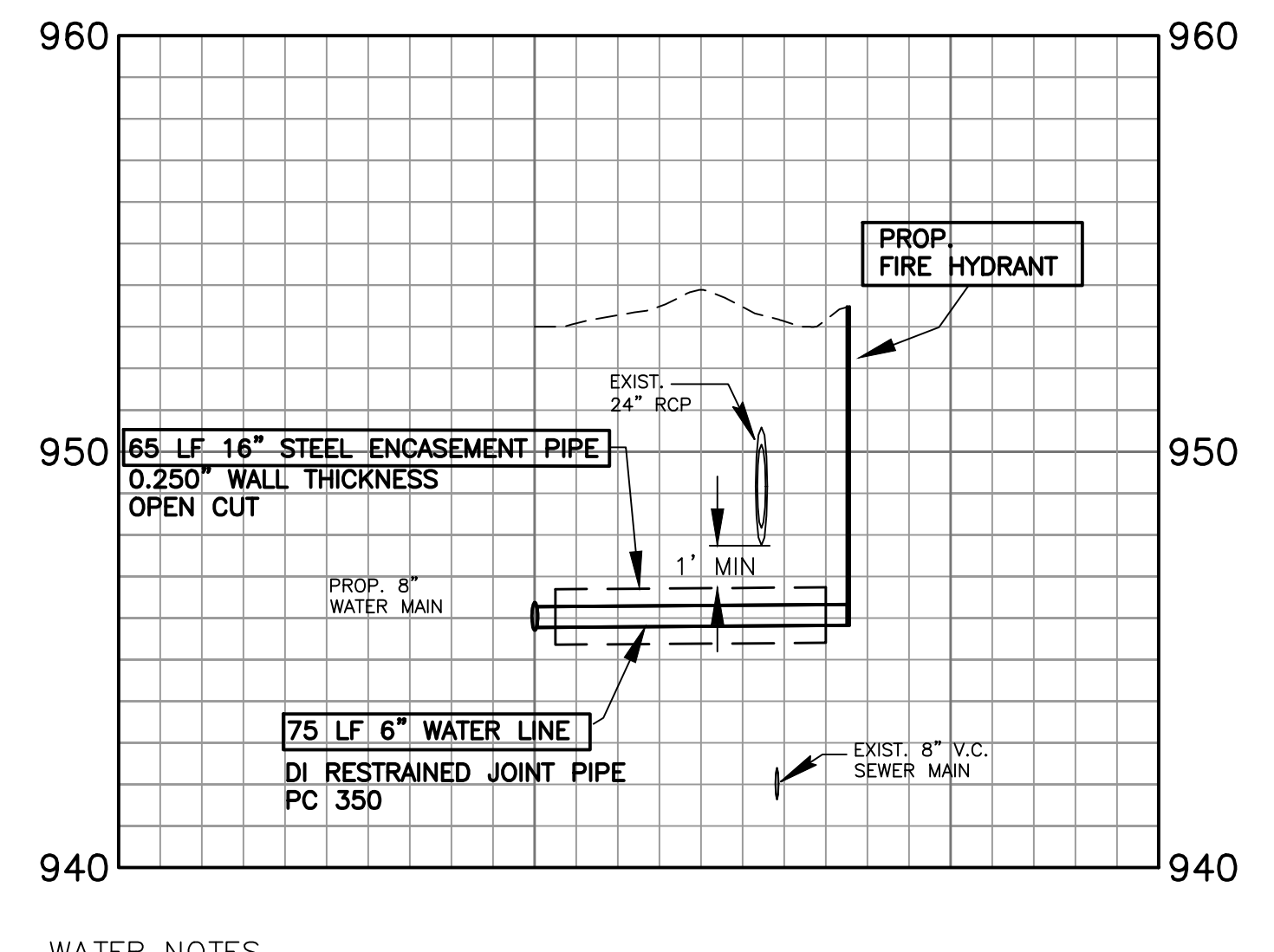


NOTE: EXISTING FIRE HYDRANT TO REMAIN IN SERVICE DURING CONSTRUCTION. CONTRACTOR TO CLOSE 6" HYDRANT VALVE AND PROPERLY RESTRAIN HYDRANT BEFORE EXCAVATING BEHIND HYDRANT. UPON COMPLETION OF PROP. WATER MAIN, REMOVE EXIST. FH.

CHARLESTOWNE SQUARE ENTRANCE (WL-1)



HYDRANT LEG @ STA. 4+09



NOTE: FOR WL-2 PROFILE, SEE SHEET UC-7 FOR WL-3 PROFILE, SEE SHEET UC-8

WATER NOTES

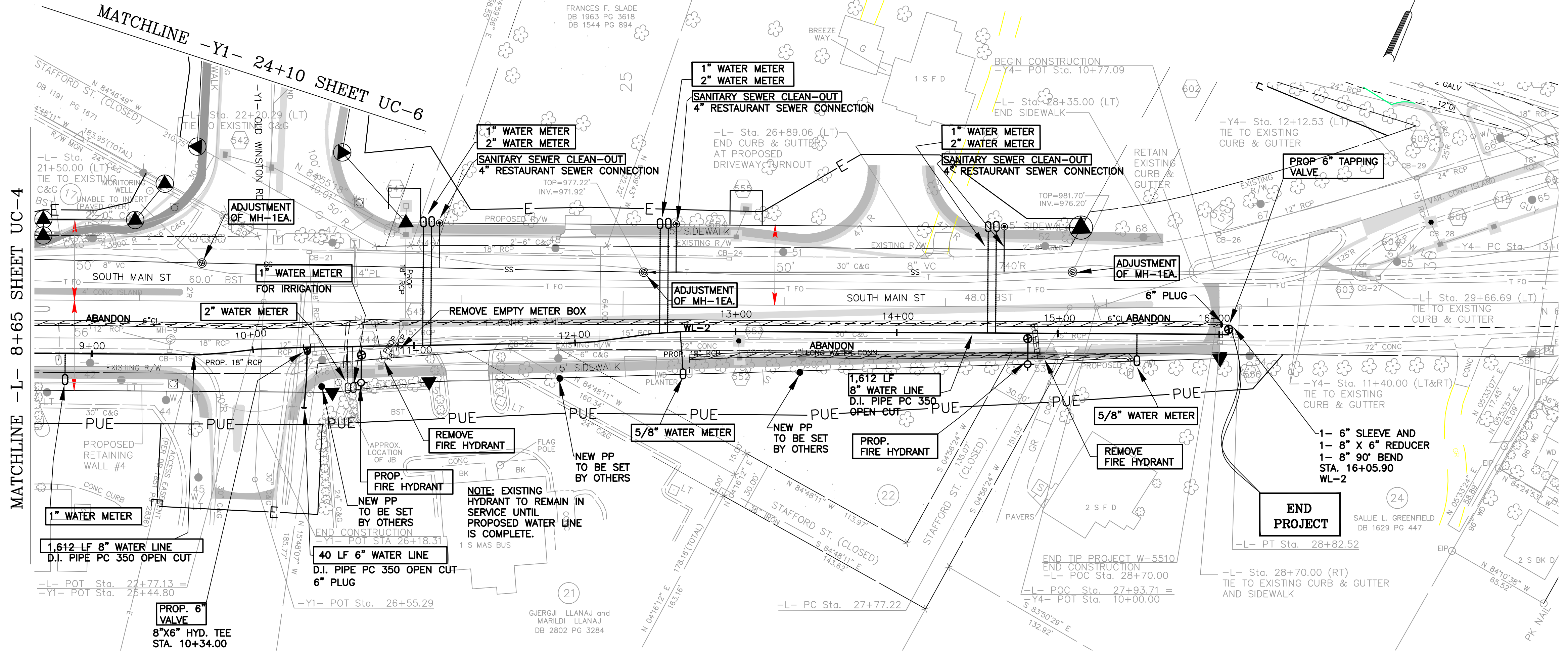
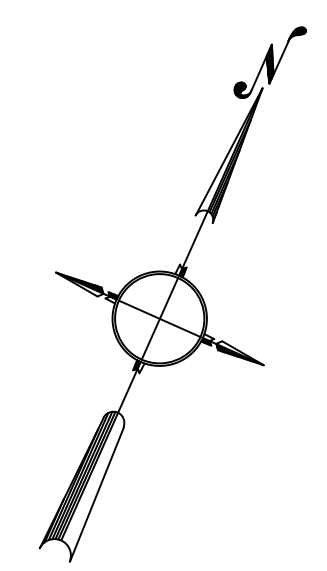
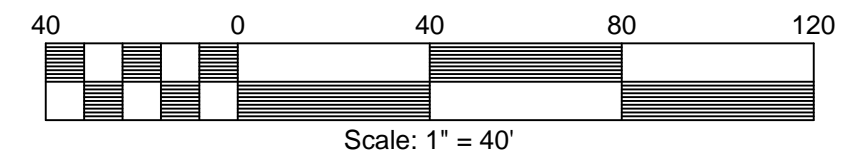
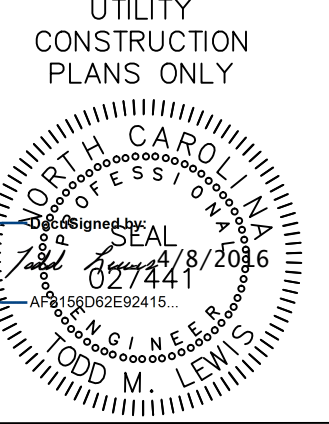
- 1. WATER MAINS WILL HAVE A MINIMUM OF 3 FEET OF COVER.
2. IF POSSIBLE, FIRE HYDRANTS WILL BE LOCATED ON THE RIGHT-OF-WAY LINE. HYDRANTS SHALL BE LOCATED AS SHOWN ON PLAN VIEW.
3. WATER MAINS WILL BE LOCATED 5 FEET FROM THE EDGE OF PAVEMENT OR AS SHOWN ON PLAN VIEW.
4. EXISTING PAVEMENT TO BE REPAIRED OR REPLACED AS REQUIRED (OR BORED AND JACKED AS SHOWN).
5. LONG SIDE WATER CONNECTIONS WILL BE BORED UNLESS DIRECTED OTHERWISE BY THE ENGINEER.
6. ALL PROPOSED VALVES SHALL BE PLACED OUTSIDE THE EXISTING PAVEMENT UNLESS OTHERWISE SHOWN ON THE PLANS.

6" D.I. WATER MAIN RELOCATION PROJECT 74339 9339

CITY OF WINSTON-SALEM PERMIT NUMBER WATER 2732 SEWER DATE 12-16-15

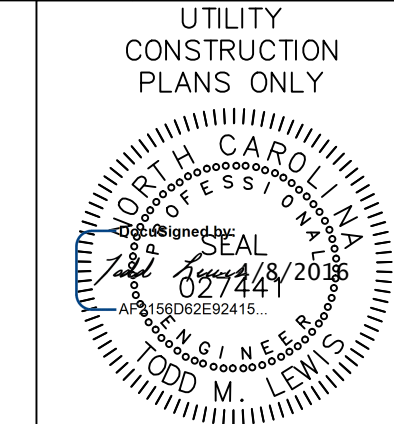
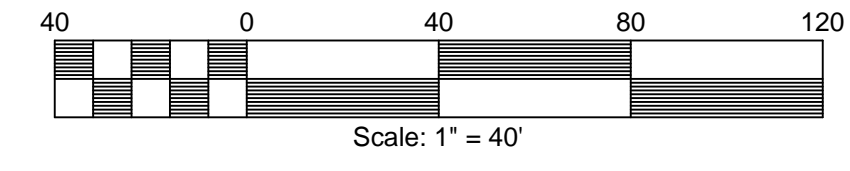
REVISIONS

Vertical text on the left margin containing revision details.

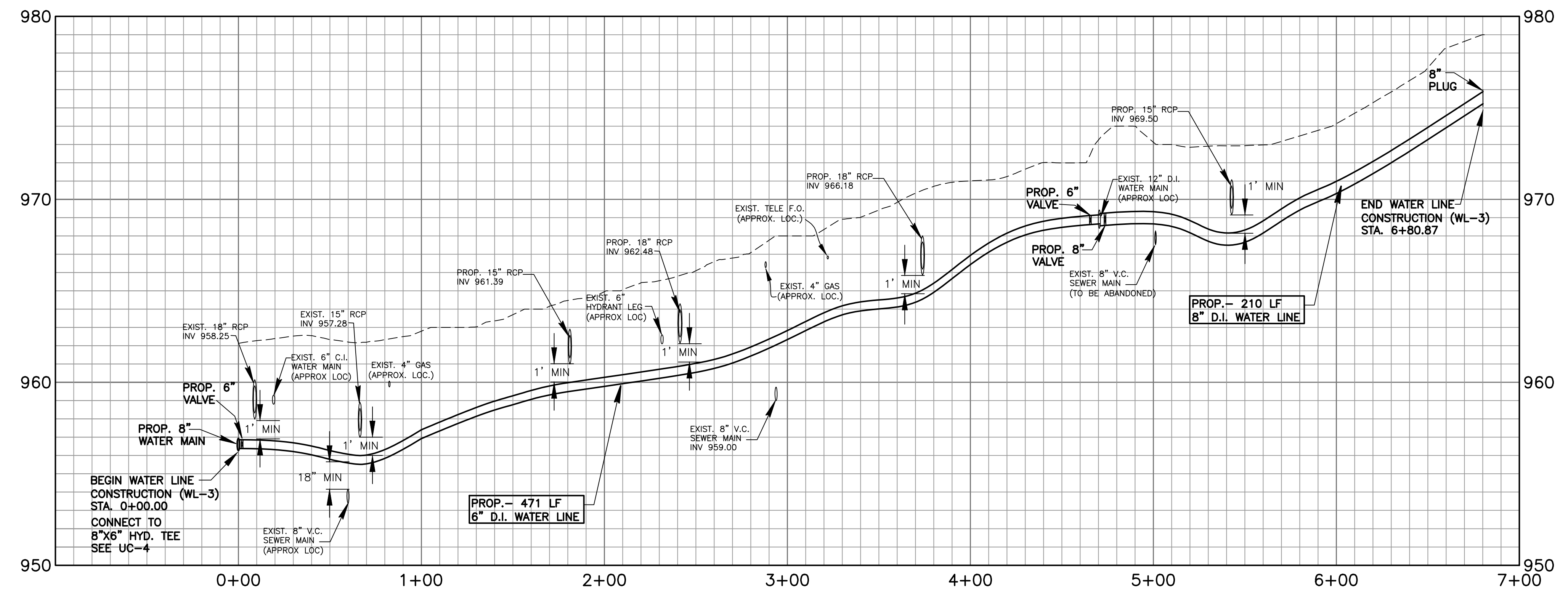


REVISIONS

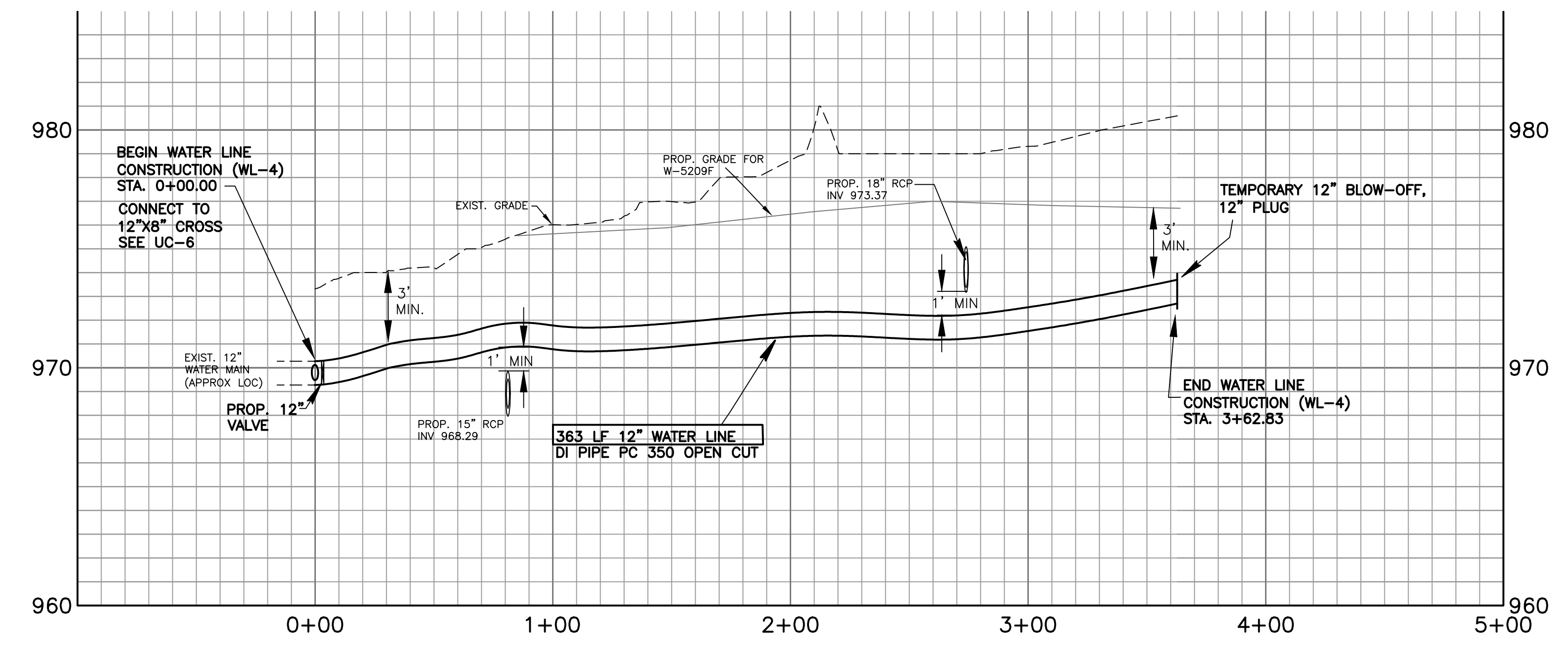
NOTE: FOR WL-2 PROFILE, SEE SHEET UC-7



WL-3



WL-4



NOTE: FOR WL-3 PLAN,
SEE SHEETS UC-4 & UC-6
FOR WL-4 PLAN,
SEE SHEET UC-6

REVISIONS

5/14/99