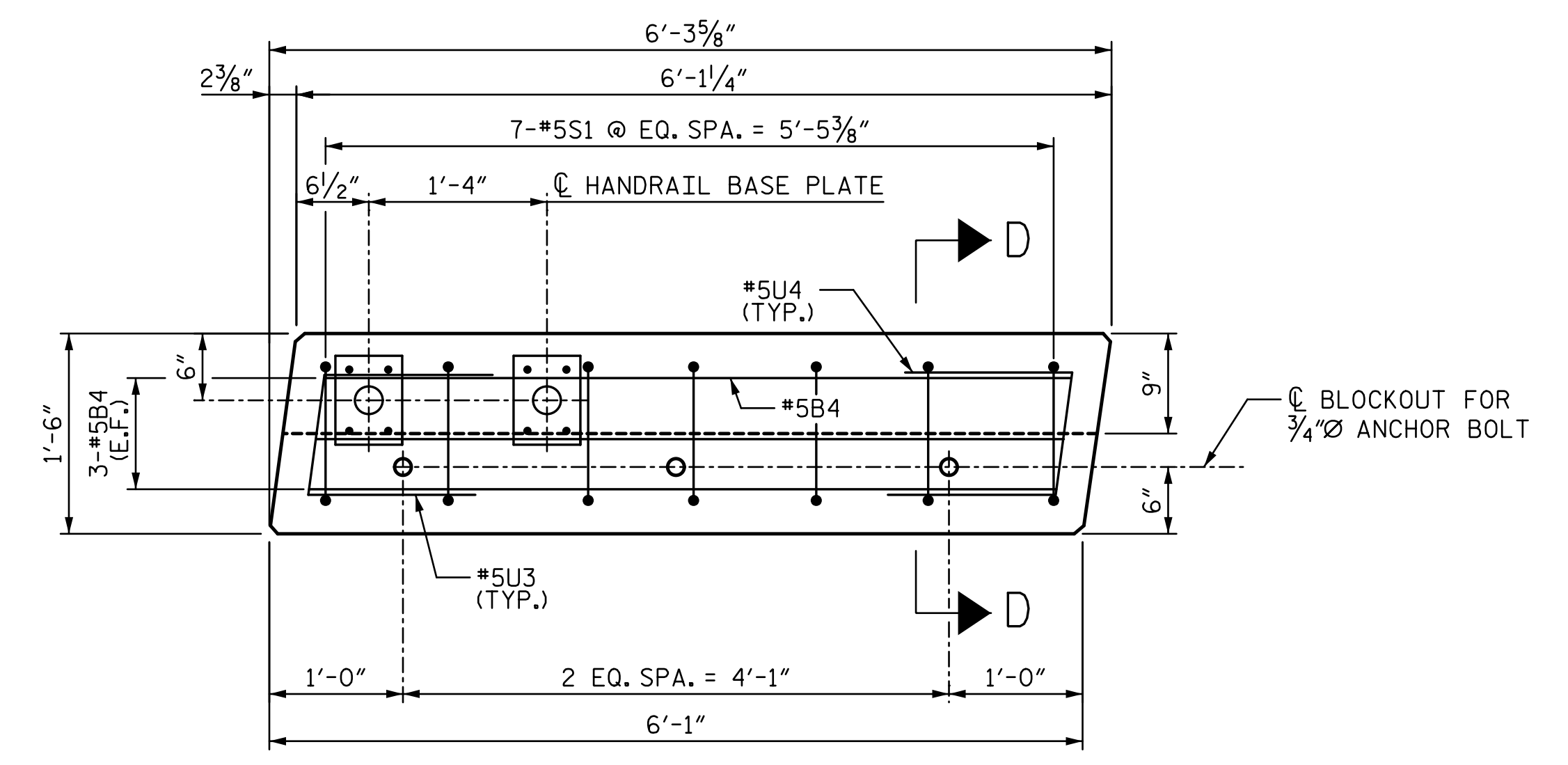
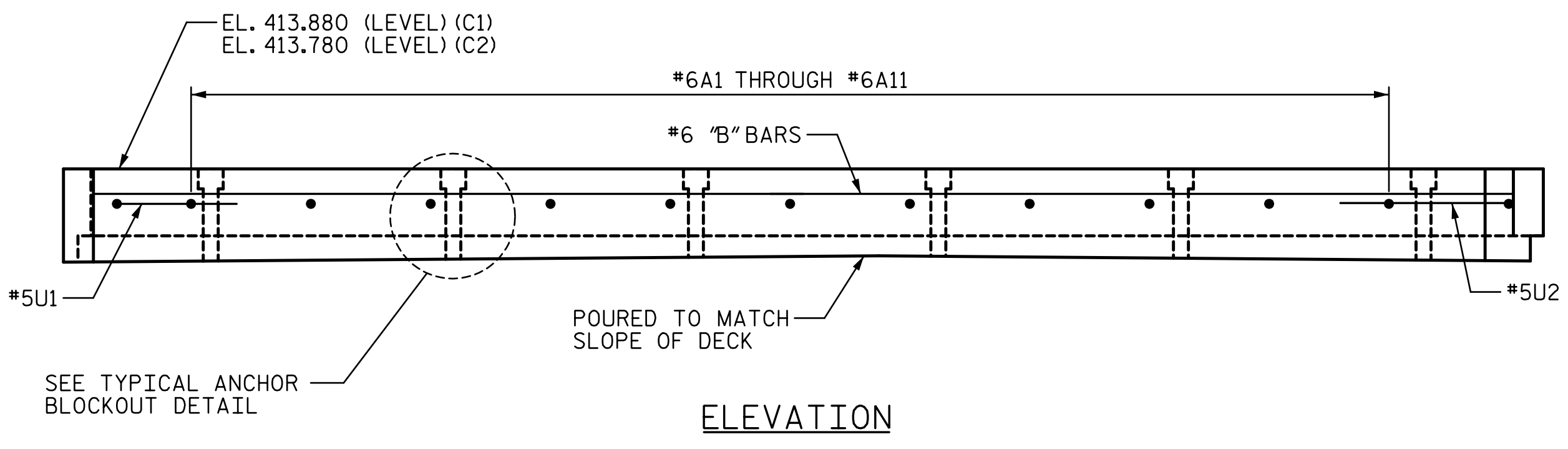


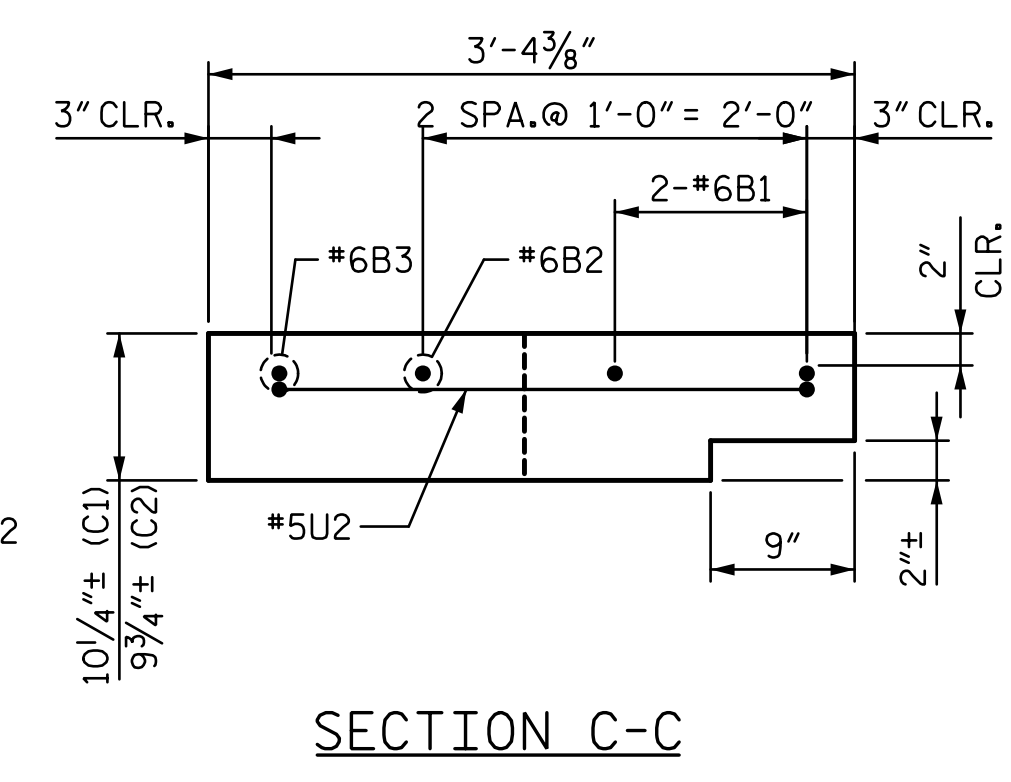
PLAN



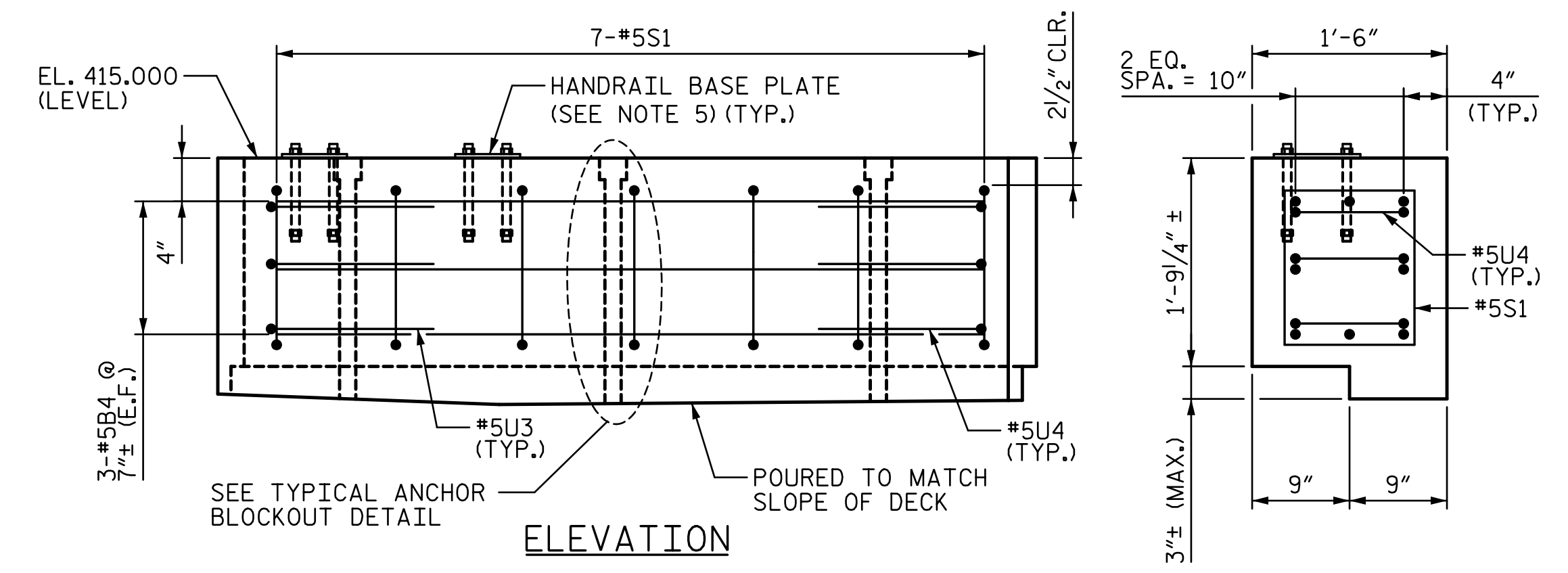
PLAN



ELEVATION



SECTION C-C

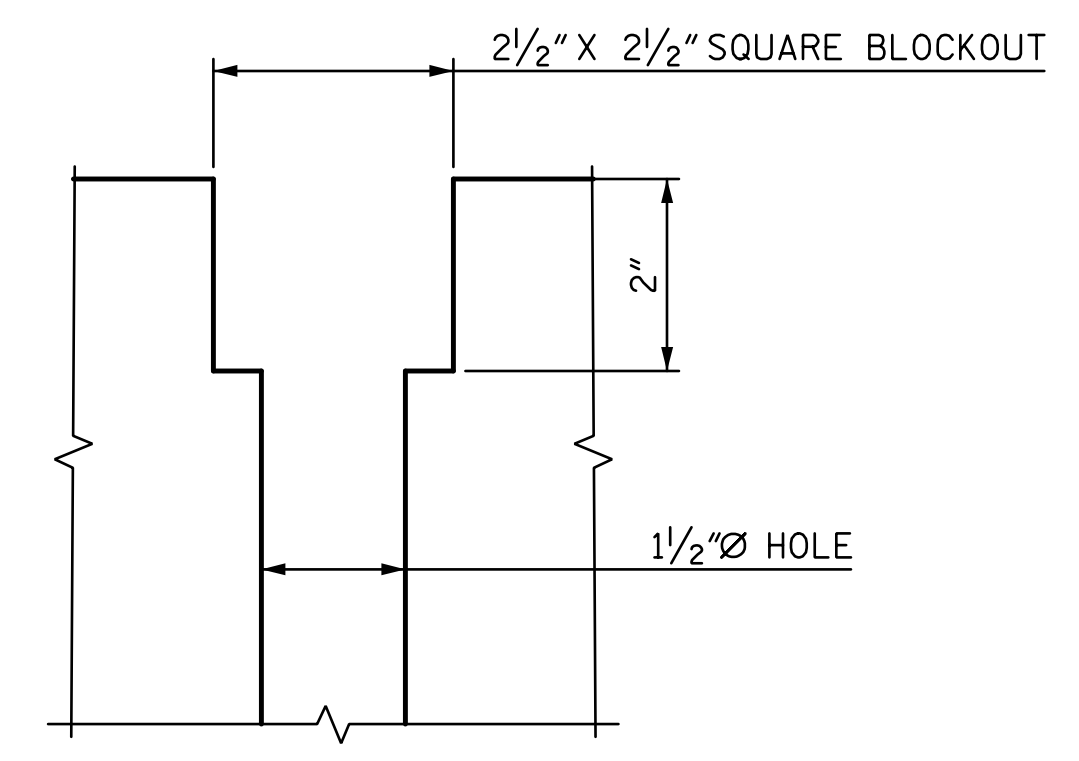


ELEVATION

SECTION D-D

CONCRETE BALLAST CURB MK. C3

TYPICAL CONCRETE PEDESTAL MK. C1 & C2



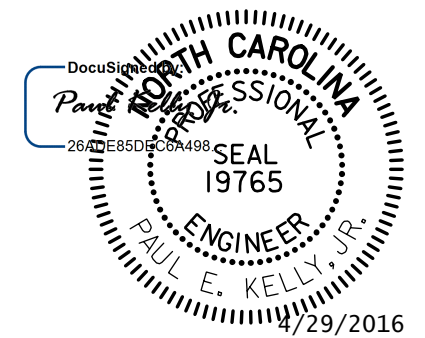
TYPICAL ANCHOR BLOCKOUT DETAIL

NOTES:

1. ALL BLOCKOUT HOLES PASS THROUGH FULL DEPTH OF PEDESTAL OR BALLAST CURB.
2. PREFORMED 1/2" Ø HOLES FOR ANCHOR BOLTS SHALL BE FORMED WITH PERMANENT CORRUGATED METAL DUCTS MADE FROM 26 GAUGE STRIP STEEL CONFORMING TO ASTM A 65M, G90 COATING WEIGHT, OR APPROVED EQUAL.
3. SEE SHEET TITLED "TEMPORARY CONCRETE PEDESTAL AND BALLAST RETAINER (4 OF 4) FOR ANCHOR BOLT DETAIL.
4. CONTRACTOR MAY ADJUST REINFORCEMENT SLIGHTLY AS NECESSARY TO AVOID BLOCKOUTS AND HANDRAIL BASE PLATE/ANCHOR BOLTS.
5. ANCHOR RODS FOR BASE PLATE SHALL BE CAST-IN-PLACE WITH THE BALLAST CURB. FOR BASE PLATE AND ANCHOR ROD DETAILS, SEE SHEET TITLED "HANDRAIL DETAILS".
6. FOR HANDRAIL DETAILS, SEE SHEETS TITLED "TEMPORARY CONCRETE PEDESTAL AND BALLAST RETAINER (1 OF 4)" AND "HANDRAIL DETAILS".
7. CHAMFER EDGES 3/4" X 3/4".
8. 3" COVER U.N.O.
9. FOR ADDITIONAL NOTES, SEE SHEET TITLED "TEMPORARY CONCRETE PEDESTAL AND BALLAST RETAINER (1 OF 4)".

PROJECT NO. U-3308
 DURHAM COUNTY
 STATION: 24+55.20 -LALT-
13+22.18 -CSXN-
 SHEET 8 OF 16

STATE OF NORTH CAROLINA
 DEPARTMENT OF TRANSPORTATION
 RALEIGH
 TEMPORARY CONCRETE
 PEDESTAL AND BALLAST
 RETAINER (2 OF 4)



REVISIONS				SHEET NO.	
NO.	BY:	DATE:	NO.	BY:	DATE:
1			3		
2			4		

TOTAL SHEETS: 68

STV / Ralph Whitehead Associates, Inc.
 900 W Trade Street, Suite 715
 Charlotte, NC 28202
 NC License No. F-0991

4/29/2016 12:32:50 PM I:\PROJ\251325\ustation\struc\Temporary Span\404_059_U3308_SML_TS08.dgn

DRAWN BY: MTC DATE: 06-14
 CHECKED BY: DJM DATE: 06-14

DOCUMENT NOT CONSIDERED FINAL
 UNLESS ALL SIGNATURES COMPLETED