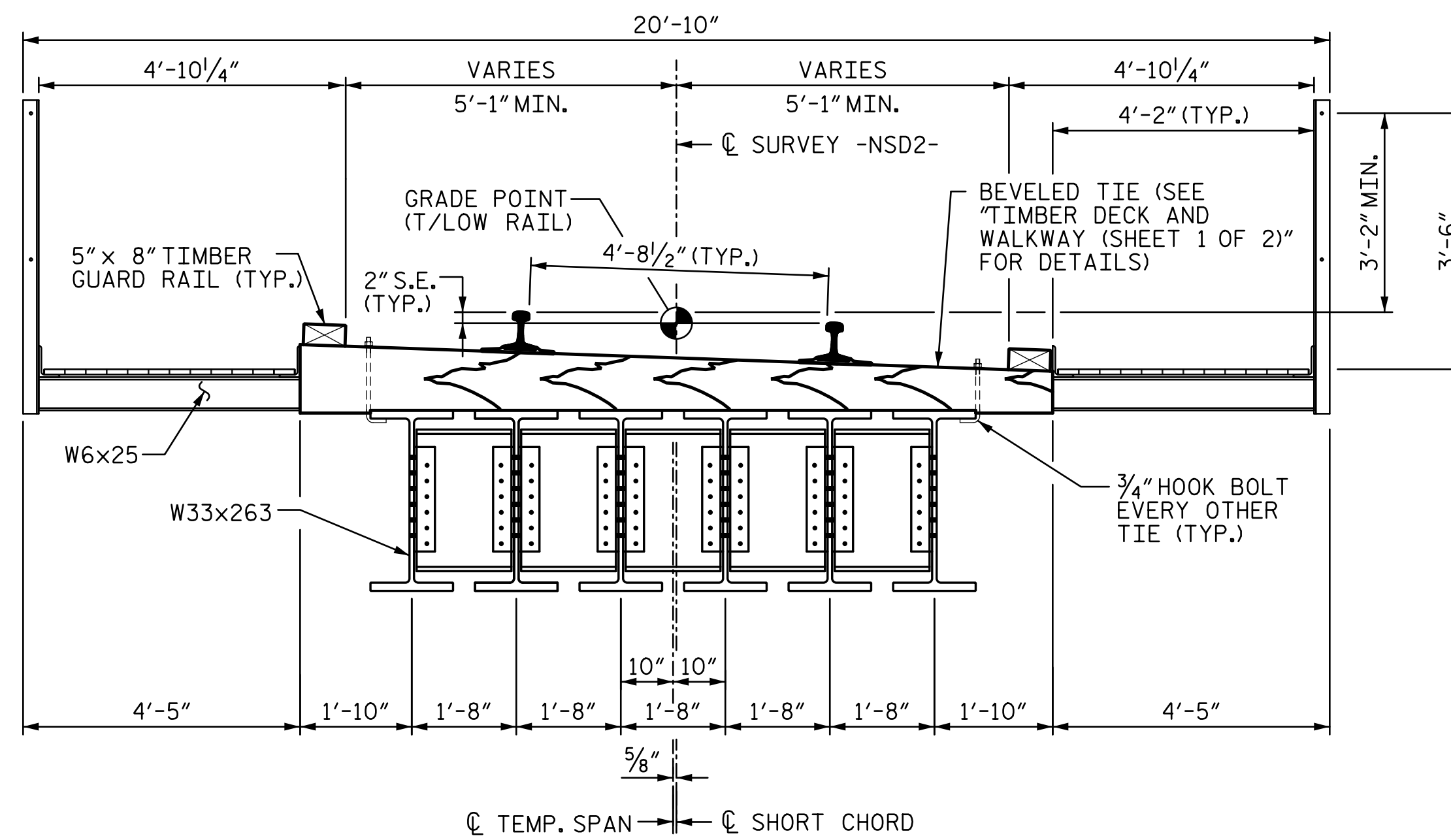
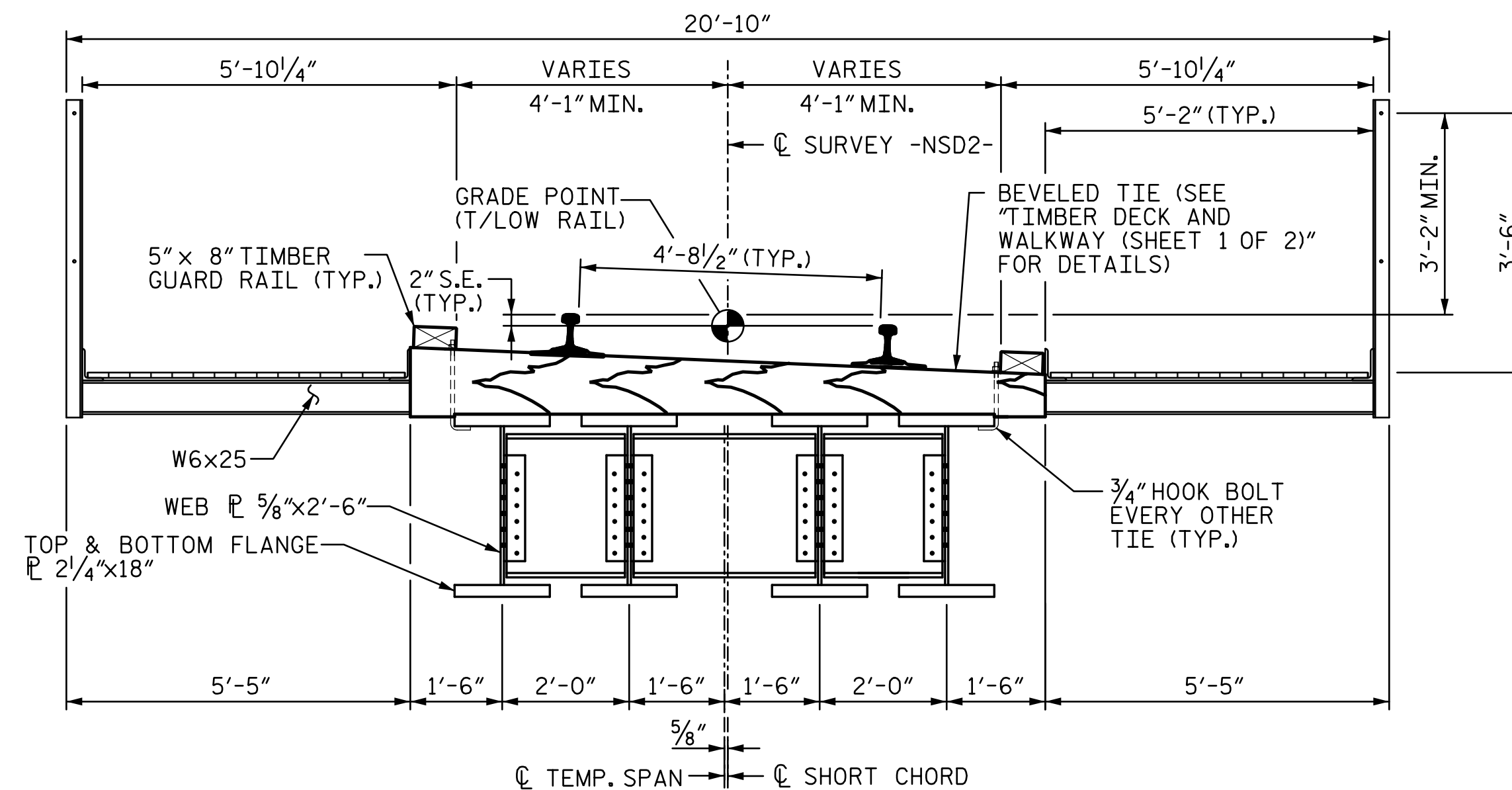


4/29/2016 12:32:40 PM I:\PROJ\251325\ustation\structure\Temporary Span\404_055_U3308_SMU_TS04.dgn

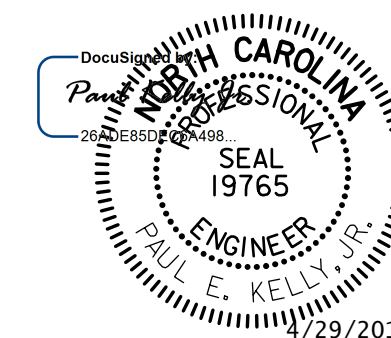


TEMPORARY SPAN TYPICAL SECTION
 (FOR TEMPORARY SPAN ALONG -NSD2- TRACK)
 (SIMPLE SPAN NON-COMPOSITE ASTM A-709 GRADE 50 W33x263 ROLLED BEAMS)



TEMPORARY SPAN TYPICAL SECTION - ALTERNATE
 (FOR TEMPORARY SPAN ALONG -NSD2- TRACK)
 (SIMPLE SPAN NON-COMPOSITE ASTM A-709 GRADE 50 PLATE GIRDERS)

NOTE: THE ALTERNATE CONFIGURATION HAS BEEN PROVIDED AS AN ACCEPTABLE ALTERNATIVE TO THE TEMPORARY SPAN AS DETAILED IN THESE PLANS. SHOULD THE CONTRACTOR CHOOSE TO USE THE ALTERNATE, THE APPLICABLE TEMPORARY SPAN PLAN SHEETS SHALL BE UPDATED, SIGNED AND SEALED BY A LICENSED AND REGISTERED ENGINEER AND SUBMITTED FOR APPROVAL TO THE DEPARTMENT AND RAILROADS PRIOR TO BEGINNING CONSTRUCTION. ALL COSTS ASSOCIATED WITH THE ALTERNATE DESIGN AND PLAN SUBMITTAL SHALL BE INCLUDED IN THE LUMP SUM BID PRICE FOR THE TEMPORARY SPAN. NO ADDITIONAL MEASUREMENT OR PAYMENT WILL BE MADE.



PROJECT NO. U-3308
DURHAM COUNTY
 STATION: 24+55.20 -LALT-
13+22.18 -CSXN-
 SHEET 4 OF 16

STATE OF NORTH CAROLINA
 DEPARTMENT OF TRANSPORTATION
 RALEIGH
**TEMPORARY SPAN
 TYPICAL SECTIONS**

DRAWN BY : MTC DATE : 06-14
 CHECKED BY : DJM DATE : 06-14

DOCUMENT NOT CONSIDERED FINAL UNLESS ALL SIGNATURES COMPLETED

STV / Ralph Whitehead Associates, Inc.
 900 W Trade Street, Suite 715
 Charlotte, NC 28202
 NC License No. F-0991

REVISIONS				SHEET NO.	
NO.	BY:	DATE:	NO.	BY:	DATE:
1			3		
2			4		

S4-56
 TOTAL SHEETS
 68