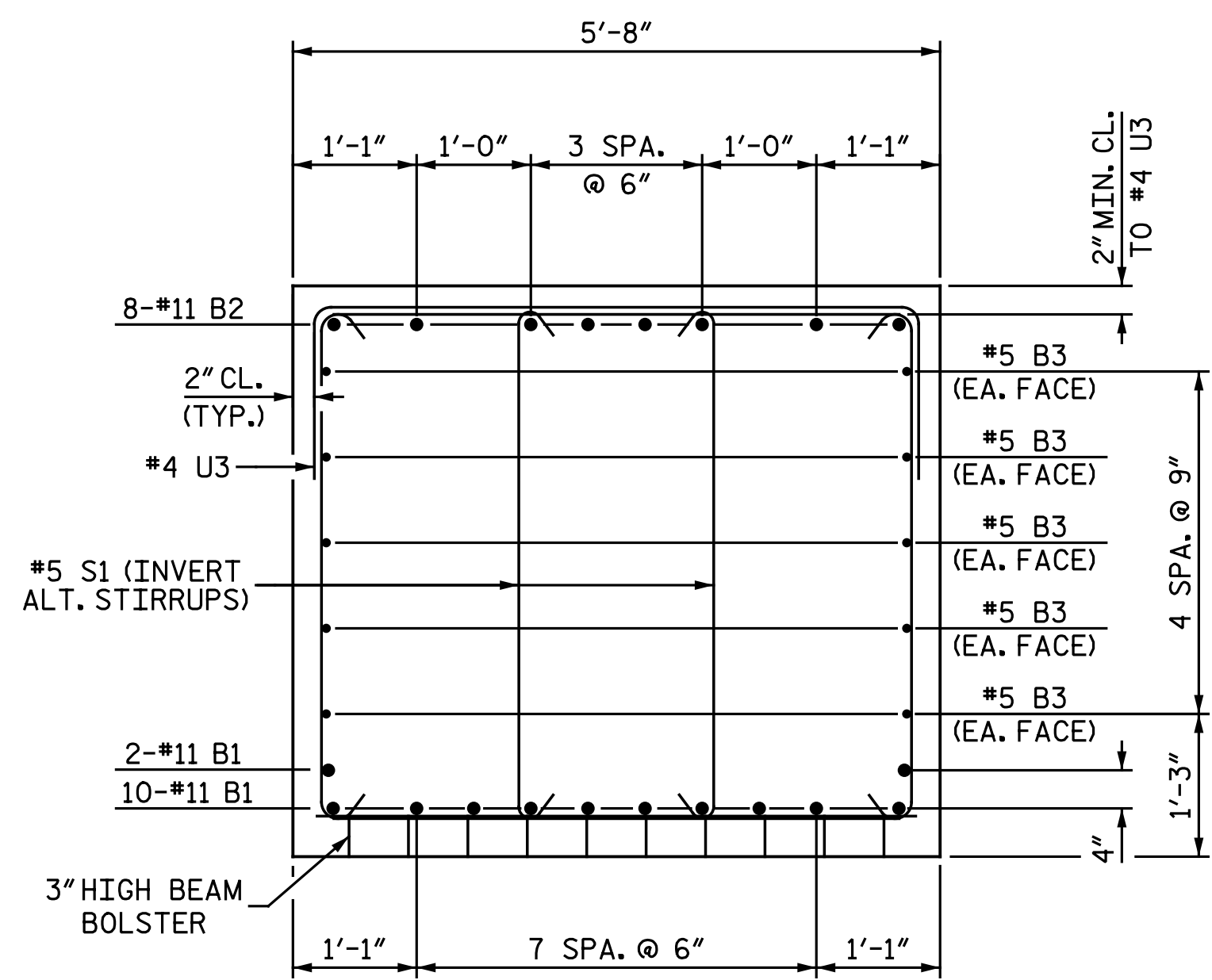
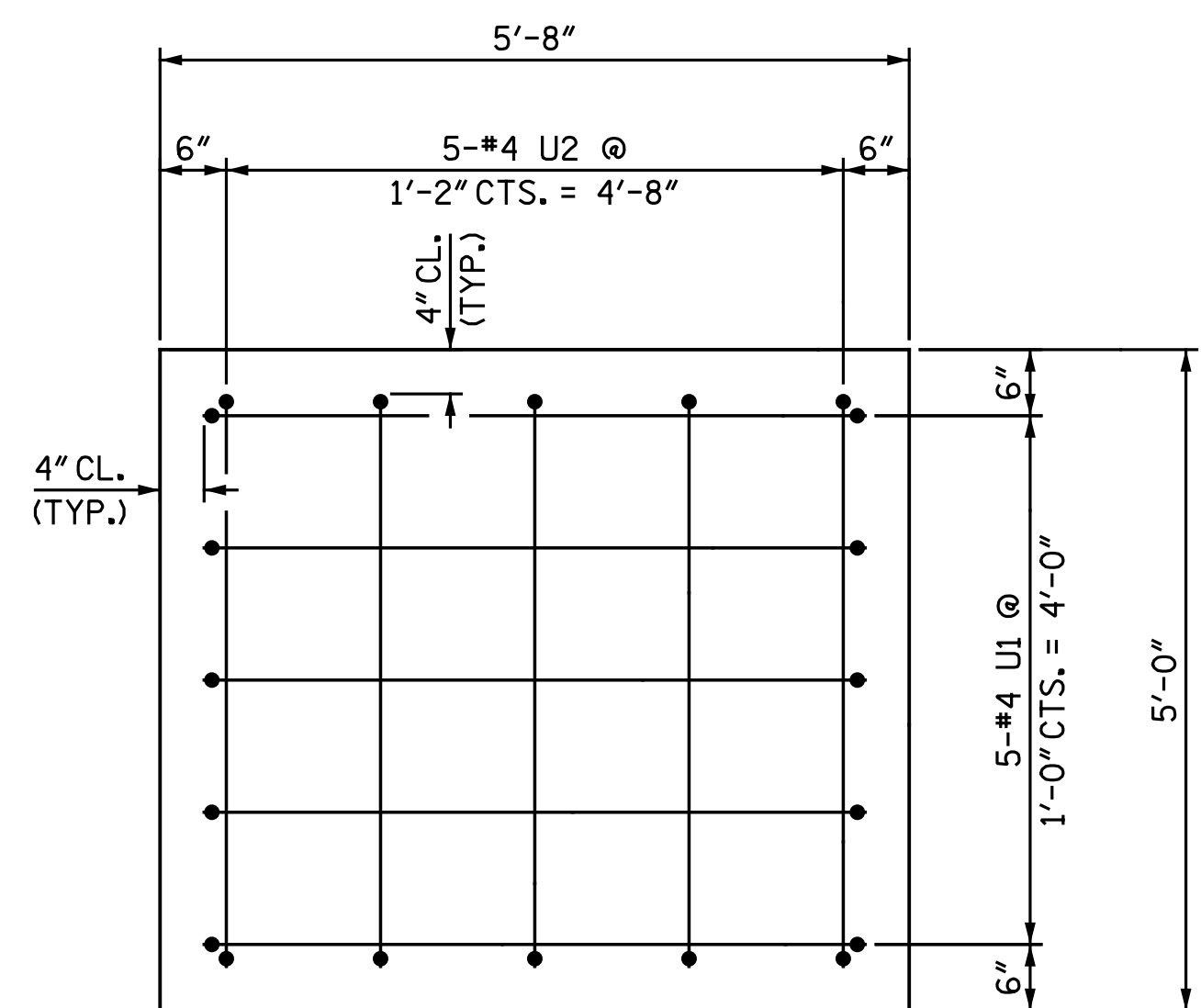


+



SECTION C-C



VIEW D-D

**NOTES:**

STIRRUPS IN CAP MAY BE SHIFTED AS NECESSARY TO CLEAR ANCHOR BOLTS.

HOOKS ON "V" BARS MAY BE TURNED AS NECESSARY FOR PLACING REINFORCING STEEL.

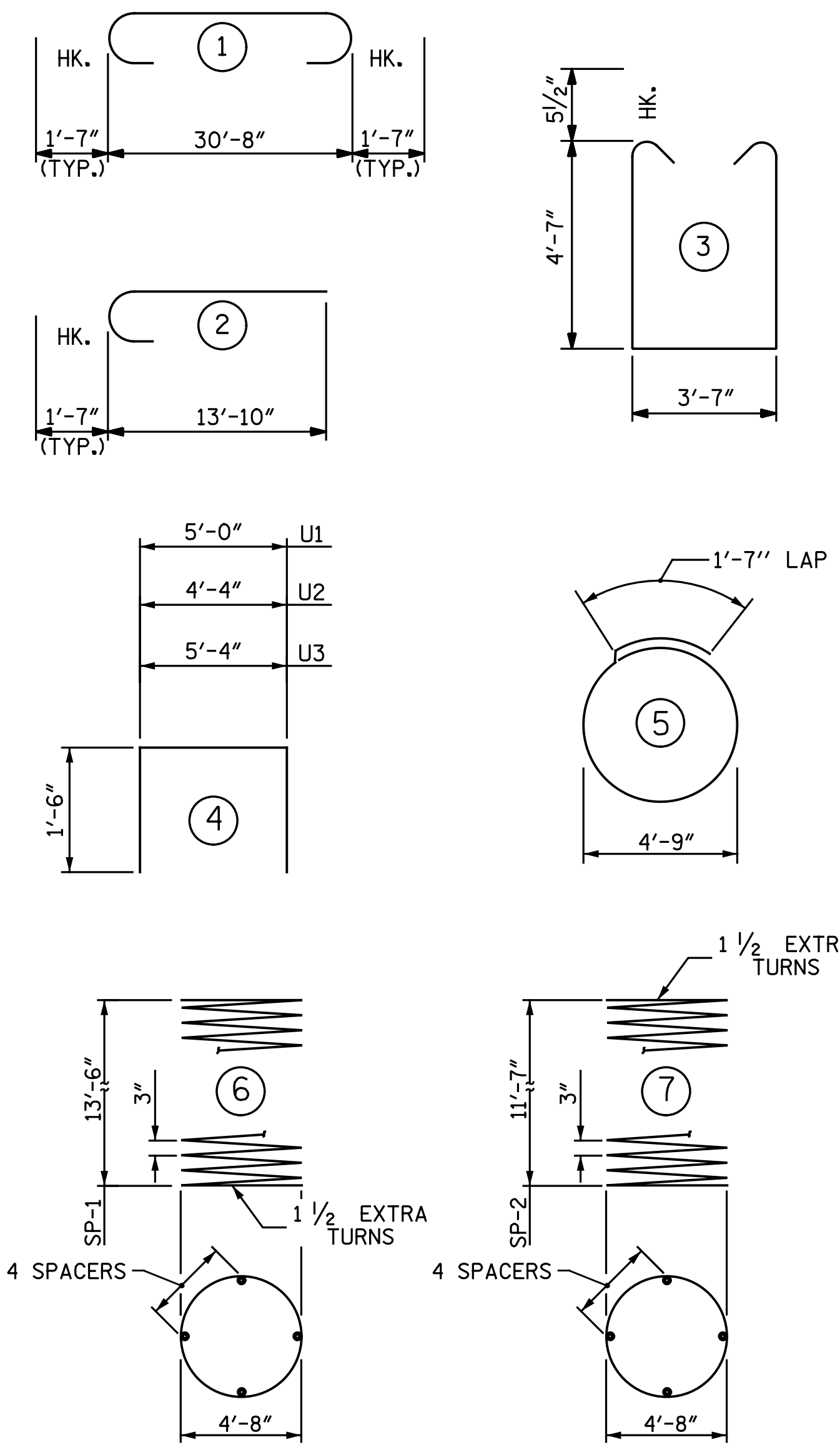
ALL STEEL IN THE DRILLED PIERS IS INCLUDED IN THE PAY ITEMS FOR "EPOXY COATED REINFORCING STEEL" AND "EPOXY COATED SPIRAL COLUMN REINFORCING STEEL".

THE CONTRACTORS ATTENTION IS CALLED TO THE FACT THAT THE LONGITUDINAL REINFORCEMENT FOR THE DRILLED PIERS IS DETAILED WITH 3 FEET OF EXTRA LENGTH.

FOR DRILLED PIERS, SEE SECTION 411 OF THE STANDARD SPECIFICATIONS.

FOR ADDITIONAL FOUNDATION NOTES, SEE "GENERAL DRAWING" SHEET 2 OF 5.

**BAR TYPES**



ALL BAR DIMENSIONS ARE OUT TO OUT.

\* THE SP-1 SPIRAL REINFORCING STEEL SHALL BE W31 OR D-31 COLD DRAWN WIRE OR #5 PLAIN OR DEFORMED BAR.

\*\* THE SP-2 SPIRAL REINFORCING STEEL SHALL BE W20 OR D-20 COLD DRAWN WIRE OR #4 PLAIN OR DEFORMED BAR.

▲ DENOTES EPOXY COATED REINFORCING STEEL

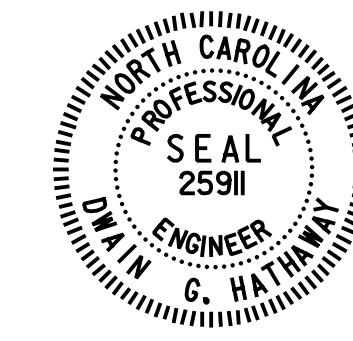
**BILL OF MATERIAL  
PIER I**

BAR NO.	NO.	SIZE	TYPE	LENGTH	WEIGHT
B1	12	11	STR	30' - 8"	1,955
B2	8	11	1	33' - 10"	1,438
B3	10	5	STR	30' - 8"	320
▲ M1	72	11	STR	27' - 7"	10,552
S1	40	5	3	13' - 8"	570
S2	21	5	5	16' - 7"	363
U1	10	4	4	8' - 0"	53
U2	10	4	4	7' - 4"	49
U3	61	4	4	8' - 4"	340
▲ V1	72	11	2	15' - 5"	5,897
▲ SP-1	3	*	6	804' - 9"	2,517
▲ SP-2	3	**	7	695' - 1"	1,392
REINFORCING STEEL				LBS.	5,088
EPOXY COATED REINFORCING STEEL				LBS.	16,449
EPOXY COATED SPIRAL COLUMN REINF. STEEL				LBS.	3,909
CLASS "AA" CONCRETE BREAKDOWN					
POUR #2		COLUMN	C.Y.	24.6	
POUR #3		CAP	C.Y.	32.5	
TOTAL CLASS "AA" CONCRETE		C.Y.	57.1		

**DRILLED PIERS**

5'-6" DIA. DRILLED PIERS IN SOIL	DRILLED PIERS :	L.F.	7.0
5'-6" DIA. DRILLED PIERS NOT IN SOIL	DRILLED PIERS :	L.F.	35.0
DRILLED PIER CONCRETE BREAKDOWN	POUR #1 DRILLED PIERS	C.Y.	37.0
CSL TUBES		L.F.	232.5

PROJECT NO. U-3308  
DURHAM COUNTY  
 STATION: 24+55.20 -LALT-  
13+22.18 -CSXN-  
 SHEET 3 OF 3



DocuSigned by:  
Dwain Holloway

5/3/2016

**Michael Baker INTERNATIONAL**

Michael Baker Engineering  
 8000 Regency Parkway, Suite 600  
 Cary, North Carolina 276518  
 NC License No.: F-1084

STATE OF NORTH CAROLINA  
 DEPARTMENT OF TRANSPORTATION  
 RALEIGH  
 SUBSTRUCTURE  
 PIER I DETAILS

**REVISIONS**

NO.	BY:	DATE:	NO.	BY:	DATE:
1			3		
2			4		

SHEET NO.  
**S4-34**  
 TOTAL SHEETS  
**68**

onayhew 5/3/2016 9:37:17 AM  
 File Name: Y:\Projects\NCDOT\U-3308\Structures\Drawings\Final\404\_034\_U3308\_SML\_P103.dgn

DRAWN BY : M. D. MAYHEW DATE : 5-9-14  
 CHECKED BY : A. L. PHILLIPS DATE : 5-12-14